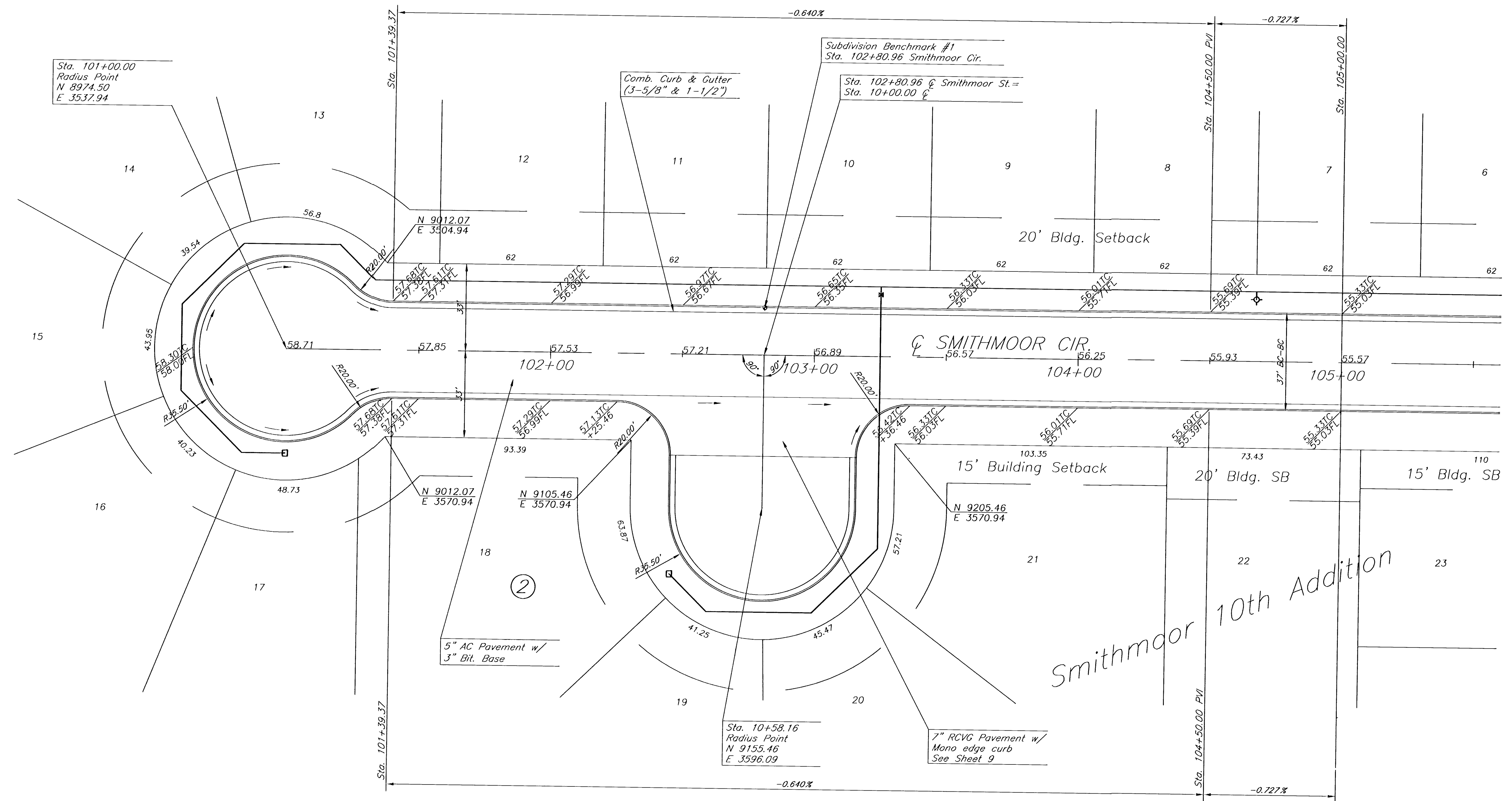
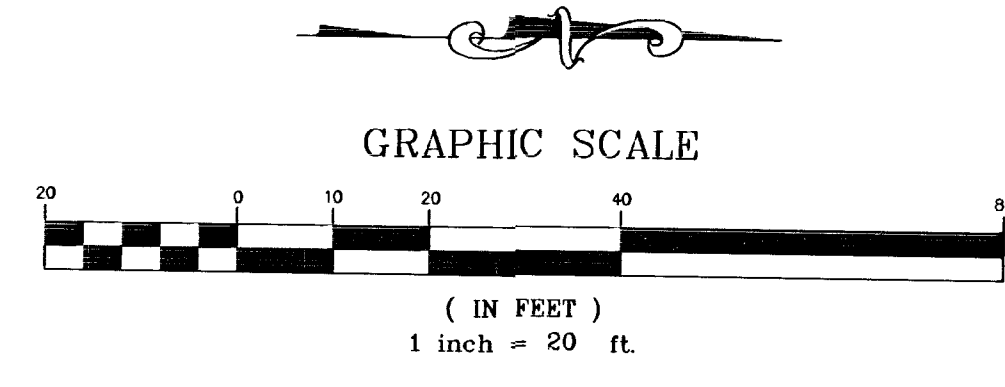


**BENCHMARKS:**

BM#1 City disc on the SW corner traffic signal base on the NE corner of the intersection of Harry St. and Greenwich Rd. Elev. = 1343.49 USGS

BM#2 "a" cut on the SW corner of the N. Headwall at the east end of pond on the W. side of Greenwich Rd., approx. 1000' S. of Harry St. Elev. = 1341.87 USGS

No.	Street and Station	From CL	Description	Elevation
1	Sta 102+80.96 Smithmoor Circle	18.25'	West curb line Smithmoor Cir., in line with CL of Bulb, 1412' west of Greenwich	
2	Sta 121+68.33 Bluestem Ct.	14.25'	South curb line Bluestem Ct., 39' west of FH, 1222' west of Greenwich.	
3	Sta 107+86.39 Smithmoor Street	18.25'	West curb line Smithmoor St., 95' North of Northeast Curb Return of Smithmoor St. and Funston St.	



**Smithmoor 10th Addition  
Smithmoor St. Paving  
Wichita, Kansas**

<b>kemiller</b> <i>engineering</i>	PROJECT NUMBER			
	KEM NO. 02037	FILE P\PLANT.dwg	DATE 5/02	SHEET 4
DESIGN RR	DRAWN TO	REVISED 6/03	OF 21	

318 S. Market, Wichita, KS 67202      318/284-0242