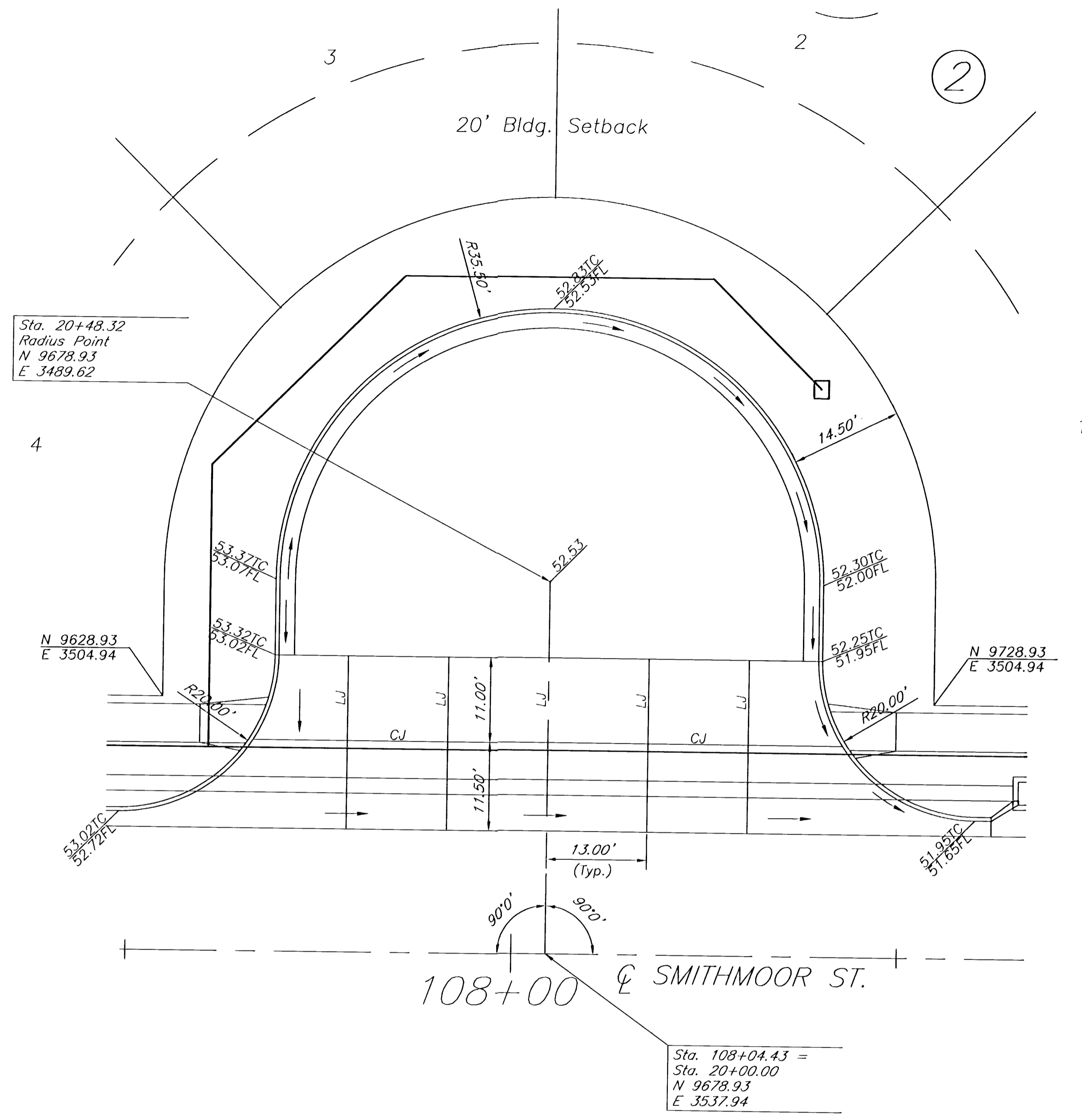
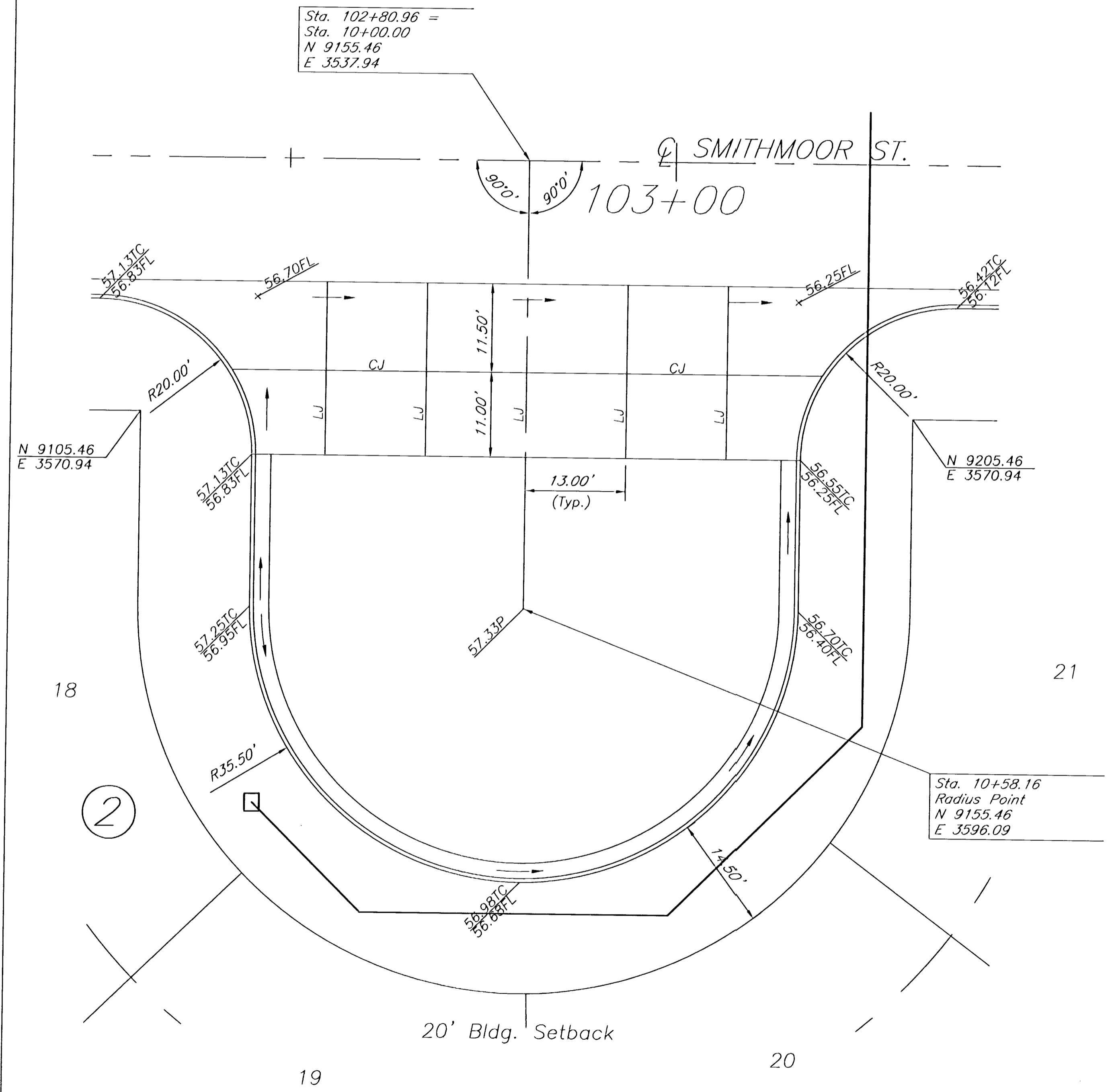


BENCHMARKS:
 BM#1 City disc on the SW corner traffic signal base on the NE corner of the intersection of Harry St. and Greenwich Rd. Elev. = 1343.49 USGS
 BM#2 "□" cut on the SW corner of the N. Headwall at the east end of pond on the W. side of Greenwich Rd., approx. 1000' S. of Harry St. Elev. = 1341.87 USGS



Smithmoor 10th Addition
Smithmoor St. Paving
 Wichita, Kansas

PROJECT NUMBER			
KEM NO. 02037	FILE Eyebrows	DATE 3/03	SHEET 7
DESIGN RR	DRAWN TO	REVISED 6/03	OF 21

516 S. Market,
 Wichita, KS 67202

316/264-0242