

Sta. 0+76.49 SWS Line 1
 B.L. Sta 106+36.02 21.67' Lt.
 1-Type 1-A Curb Inlet
 (10' x 4')
 Top=1354.29
 FI (N)=1345.86
 FI (E)=1345.96

Sta. 3+08.47 SWS Line 1
 B.L. Sta 108+68.00 21.67' Lt.
 1-Type 1-A Curb Inlet
 (5' x 4')
 Top=1351.91
 FI (N)=1347.39
 FI (S)=1346.89
 FI (E)=1347.64

Sta. 3+90.04 SWS Line 1
 B.L. Sta 109+49.57 21.67' Lt.
 1-Type 1-A Curb Inlet
 (5' x 4')
 Top=1352.08
 FI (W)=1347.73
 FI (S)=1347.63

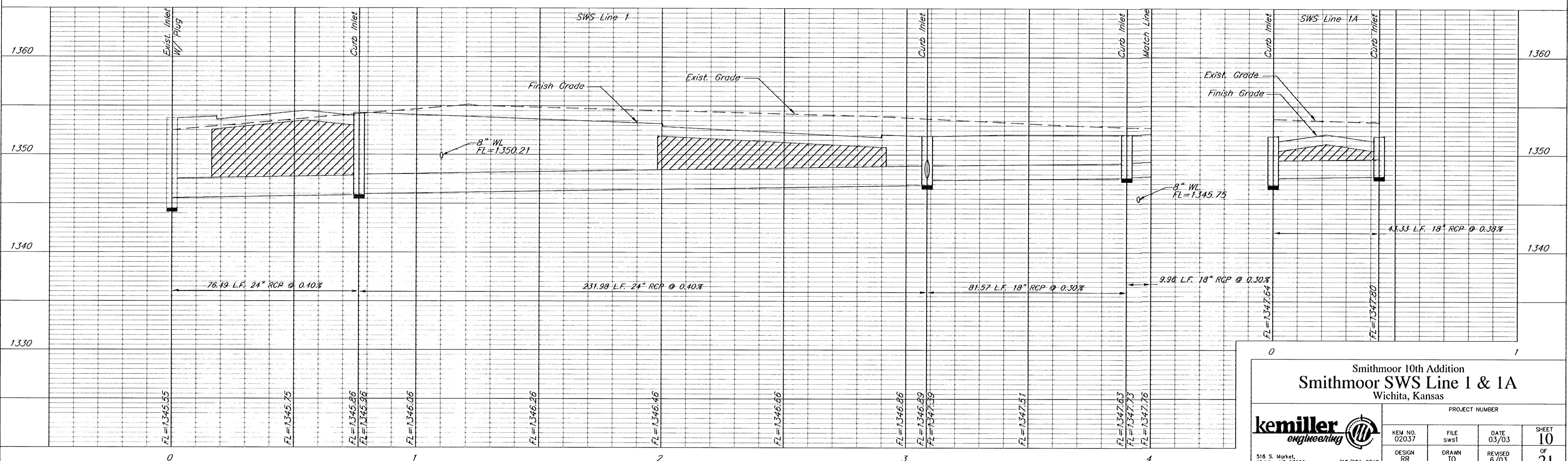
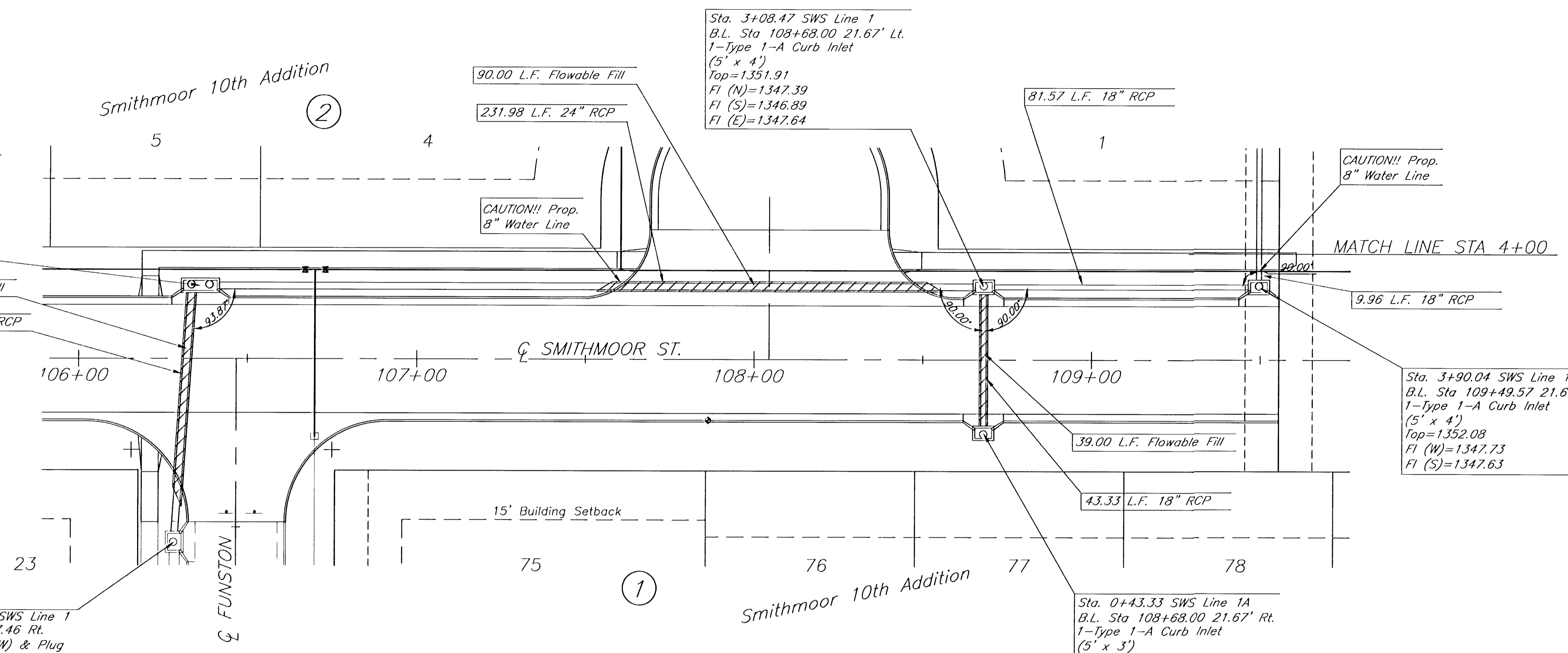
Sta. 7+65.54 SWS Line 1
 B.L. Sta 81+57.46 Rt.
 24" Stub (HNW) & Plug
 Top=1353.72
 FI (E)=1344.55
 FI (W)=1345.55

Sta. 0+43.33 SWS Line 1A
 B.L. Sta 108+68.00 21.67' Rt.
 1-Type 1-A Curb Inlet
 (5' x 3')
 Top=1351.91
 FI (W)=1347.80

BENCHMARKS:

BM#1 City disc on the SW corner traffic signal base on the NE corner of the intersection of Harry St. and Greenwich Rd. Elev. = 1343.49 USGS

BM#2 "I" cut on the SW corner of the N. Headwall at the east end of pond on the W. side of Greenwich Rd., approx. 1000' S. of Harry St. Elev. = 1341.87 USGS



**Smithmoor 10th Addition
 Smithmoor SWS Line 1 & 1A
 Wichita, Kansas**

PROJECT NUMBER			
KEM NO. 02037	FILE sws1	DATE 03/03	SHEET 10
DESIGN RR	DRAWN TO	REVISED 6/03	OF 21

516 S. Market, Wichita, KS 67202 316/284-0242