




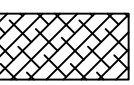
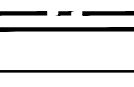



EROSION CONTROL PLAN LEGEND
(Installation Details Found in the SMP2 Plan)

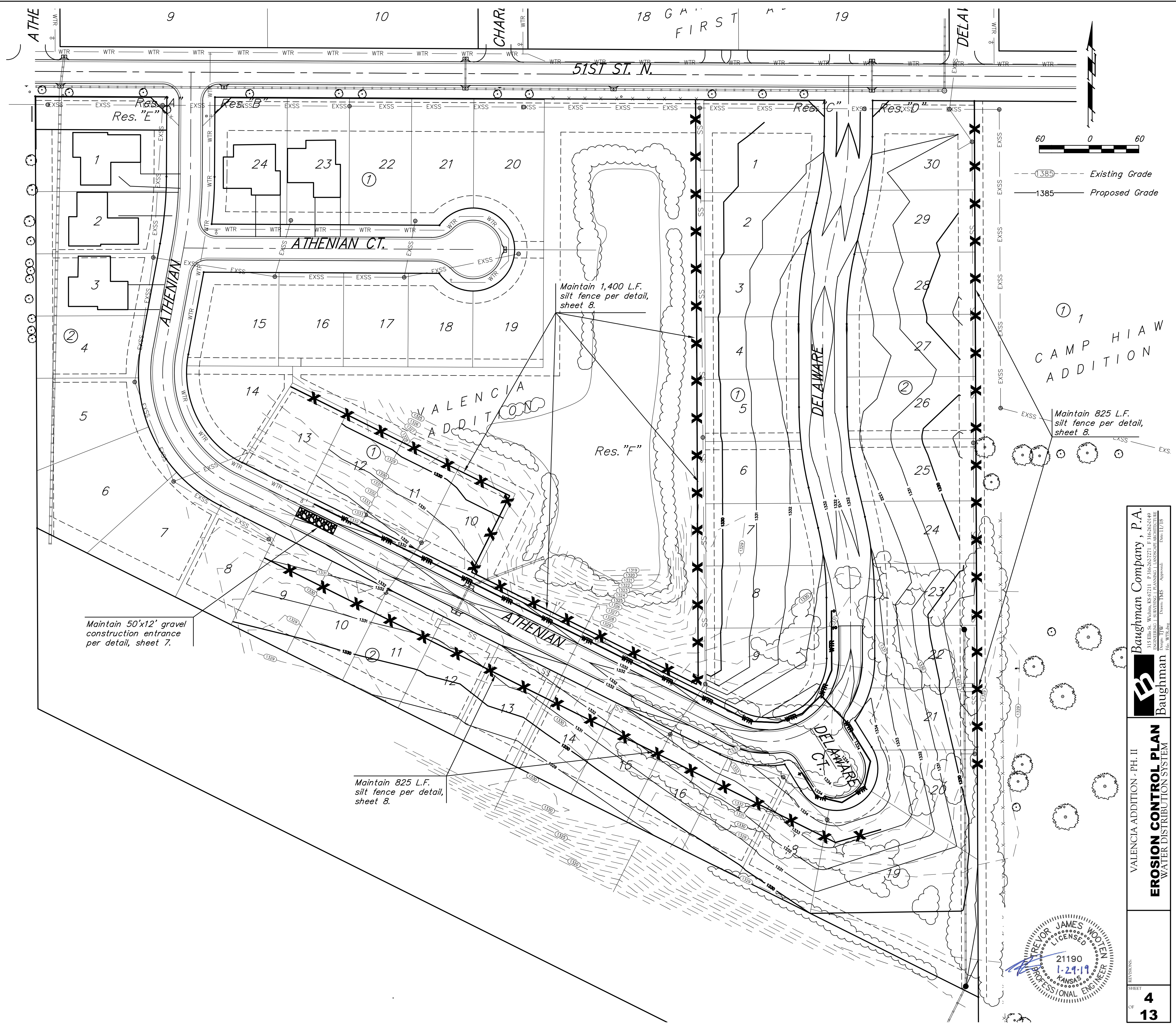
-  - DROP INLET PROTECTION
-  - CURB INLET PROTECTION
-  - DITCH CHECKS
-  - SILT FENCING
-  - EROSION CONTROL BERM
-  - BACK OF CURB PROTECTION
-  - EROSION CONTROL MAT
-  - TEMPORARY DITCH

NO SCALE

EROSION CONTROL MEASURE	INSTALL	MAINTAIN	REMOVE
BACK OF CURB PROTECTION (LF)	0	0	0
CONSTRUCTION ENTRANCE (EA)	0	1	0
CURB INLET BARRIER (EA)	0	0	0
DITCH CHECK (EA)	0	0	0
DROP INLET PROTECTION (EA)	0	0	0
EROSION CONTROL (LS)	0	0	0
EROSION CONTROL BERM (LF)	0	0	0
SILT FENCE (LF)	0	3,050	0
EROSION CONTROL MAT (SY)	0	0	0

QUANTITIES ARE FOR INFORMATION ONLY! CONTRACTOR SHALL VERIFY QUANTITIES PER FINAL BID QUANTITY SHEET.

* ALL EXISTING BMPs INCLUDING CONSTRUCTION ENTRANCE, SEDIMENT BARRIERS, SILT FENCE, EROSION CONTROL BERM, AND EROSION CONTROL MAT SHALL BE MAINTAINED AND REPAIRED IF NECESSARY. REPLACEMENT OR REMOVAL OF EROSION CONTROL MEASURES TO BE PAID FOR BY L.S. BID ITEM "MAINTAIN EXISTING EROSION CONTROL BMPs"



PREPARED BY
JAMES WOOLLEN
 LICENSED PROFESSIONAL ENGINEER
 21190
 1-21-11
 KANSAS

Baughman Company, P.A.
 ENGINEERING ARCHITECTURE
 1100 W. 19th St., Suite 100
 Topeka, KS 66604
 Phone: 785.326.1111
 Fax: 785.326.1112
 www.baughmanpa.com

VALENCIA ADDITION - PH. II
EROSION CONTROL PLAN
 WATER DISTRIBUTION SYSTEM