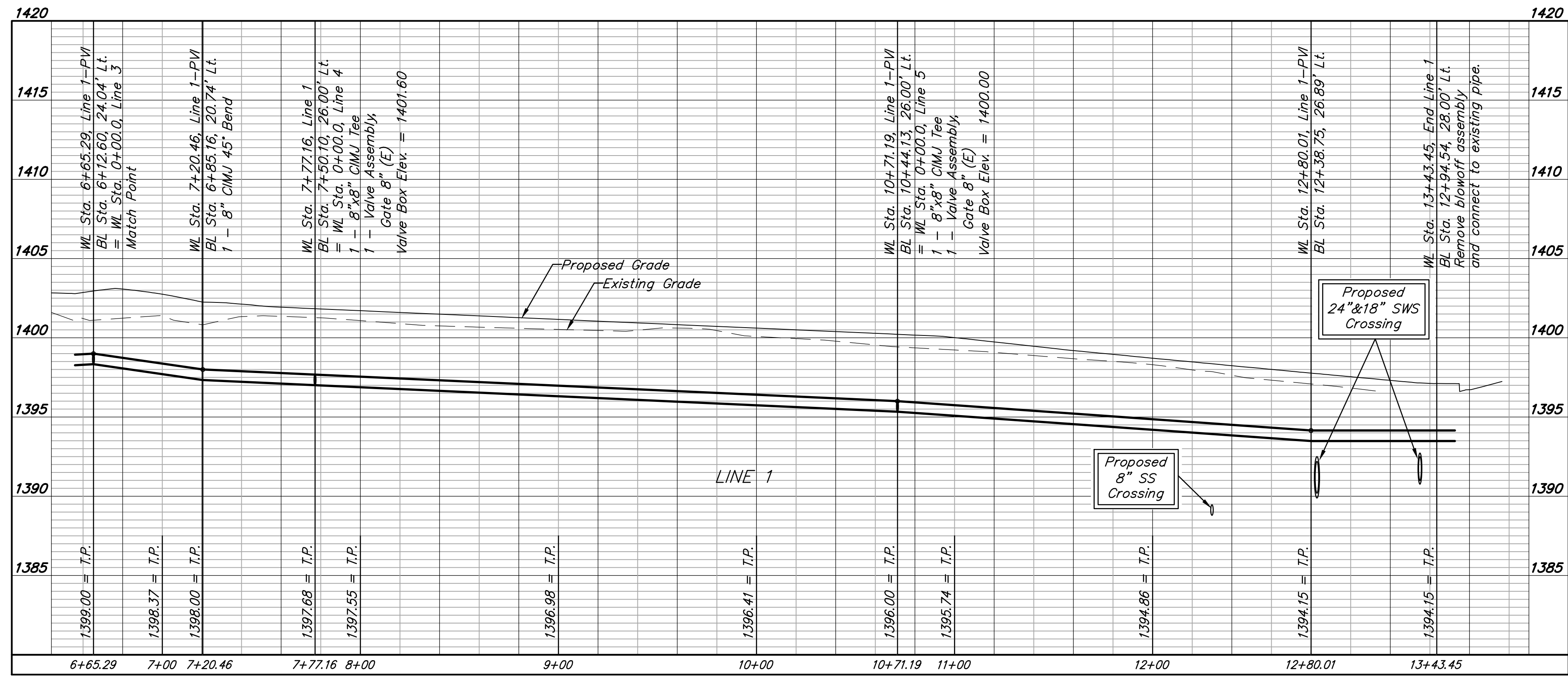
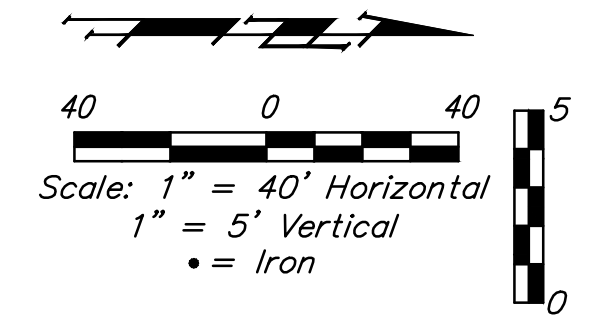
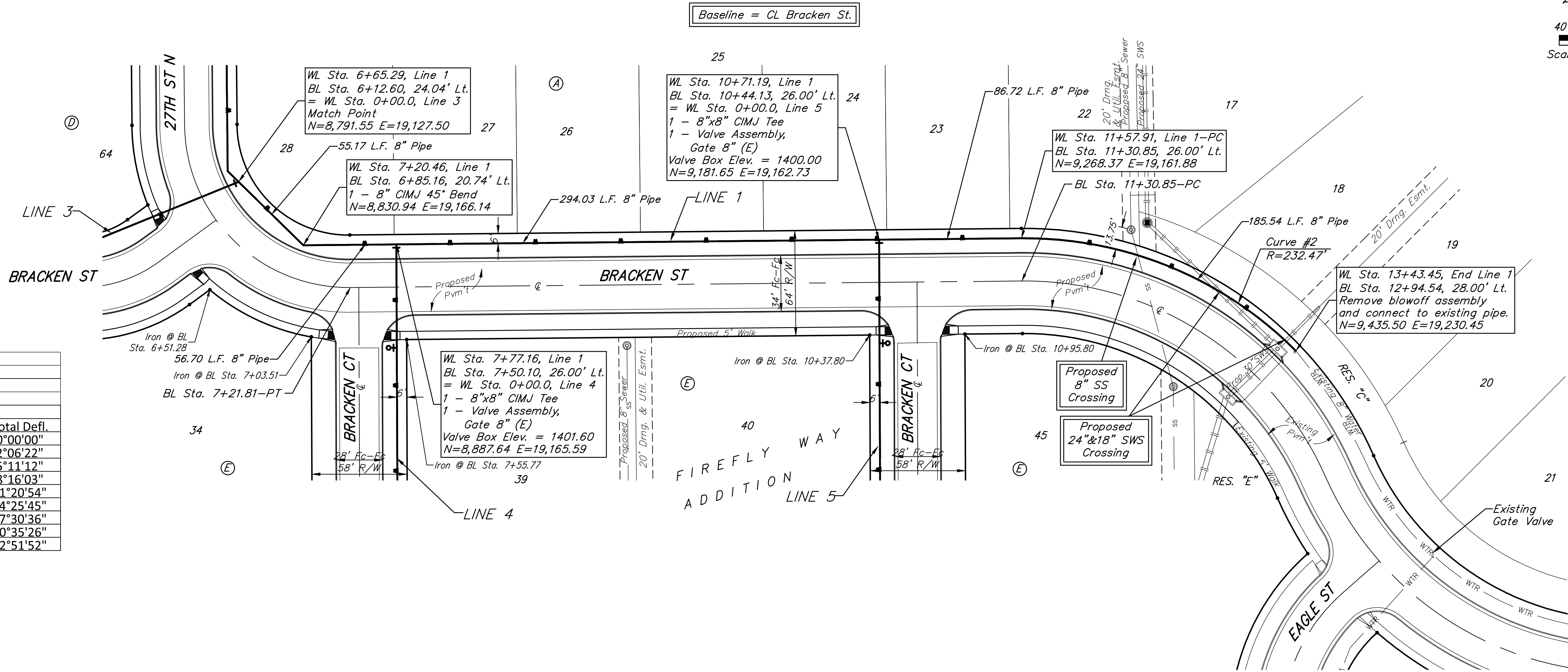


BENCHMARKS:
BM#1: RR spike in high line pole, 40' west and 30' south of Lot 60, Block D, Firefly Way Addition.
 Elev. = 1399.54 NAVD88

BM#2: Benchmark disc in top of curb, adjacent to fire hydrant 15' south of SE corner of Lot 2, Block C, Firefly Way Addition.
 Elev. = 1396.95 NAVD88

For radii under 300', contractor shall use short pipe lengths.

Curve #2				
Curve Data Based on Waterline				
Rad. = 232.47' Delta = 45°43'43" Tangent = 98.03'				
Arc = 185.54' L.C. = 180.65' Def./Ft. = 7.39387 Min.				
Chord Lengths				
Station	Arc	6' Left	Defl.	Total Defl.
11+57.91	-	-	0°00'00"	0°00'00"
11+75.00	17.09'	17.53'	2°06'22"	2°06'22"
12+00.00	25.00'	25.63'	3°04'50"	5°11'12"
12+25.00	25.00'	25.63'	3°04'51"	8°16'03"
12+50.00	25.00'	25.63'	3°04'51"	11°20'54"
12+75.00	25.00'	25.63'	3°04'51"	14°25'45"
13+00.00	25.00'	25.63'	3°04'51"	17°30'36"
13+25.00	25.00'	25.63'	3°04'50"	20°35'26"
13+43.45	18.45'	18.92'	2°16'26"	22°51'52"



DEPTH UNKNOWN
 Contractor to Verify
 Depth & Location of
 Existing Water Line
 Prior to Construction.

