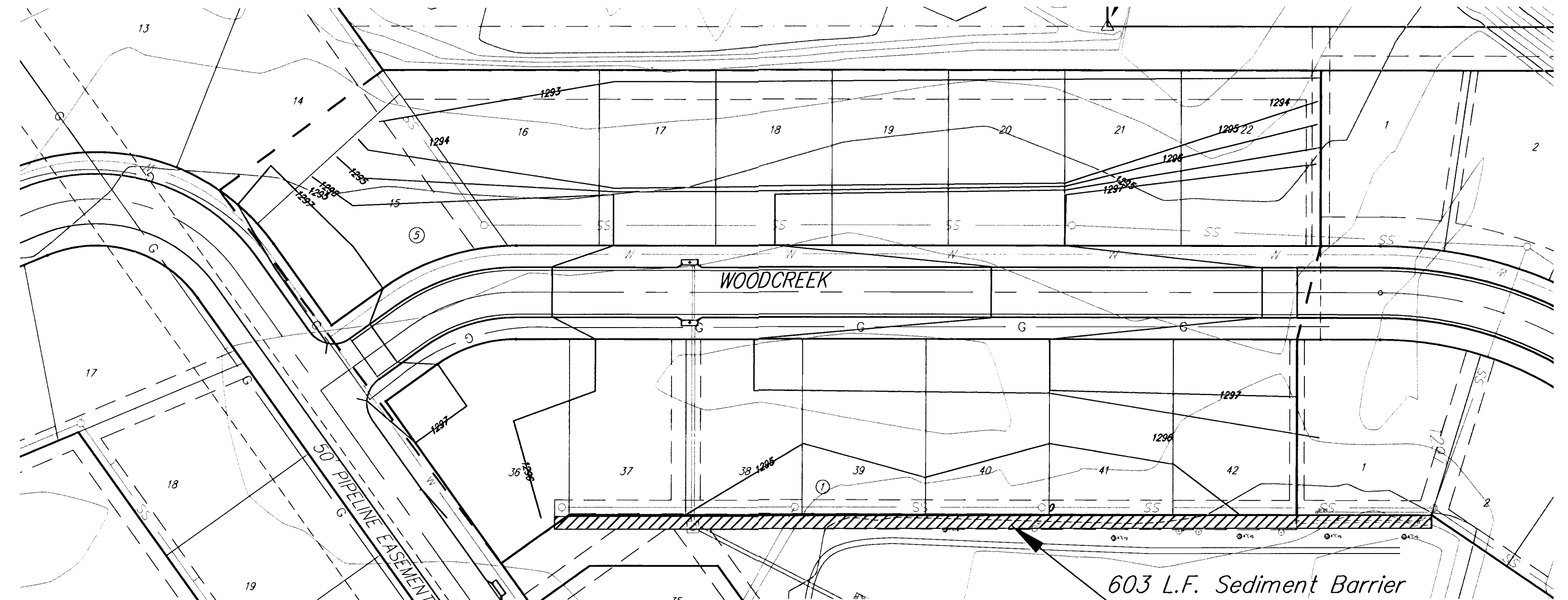
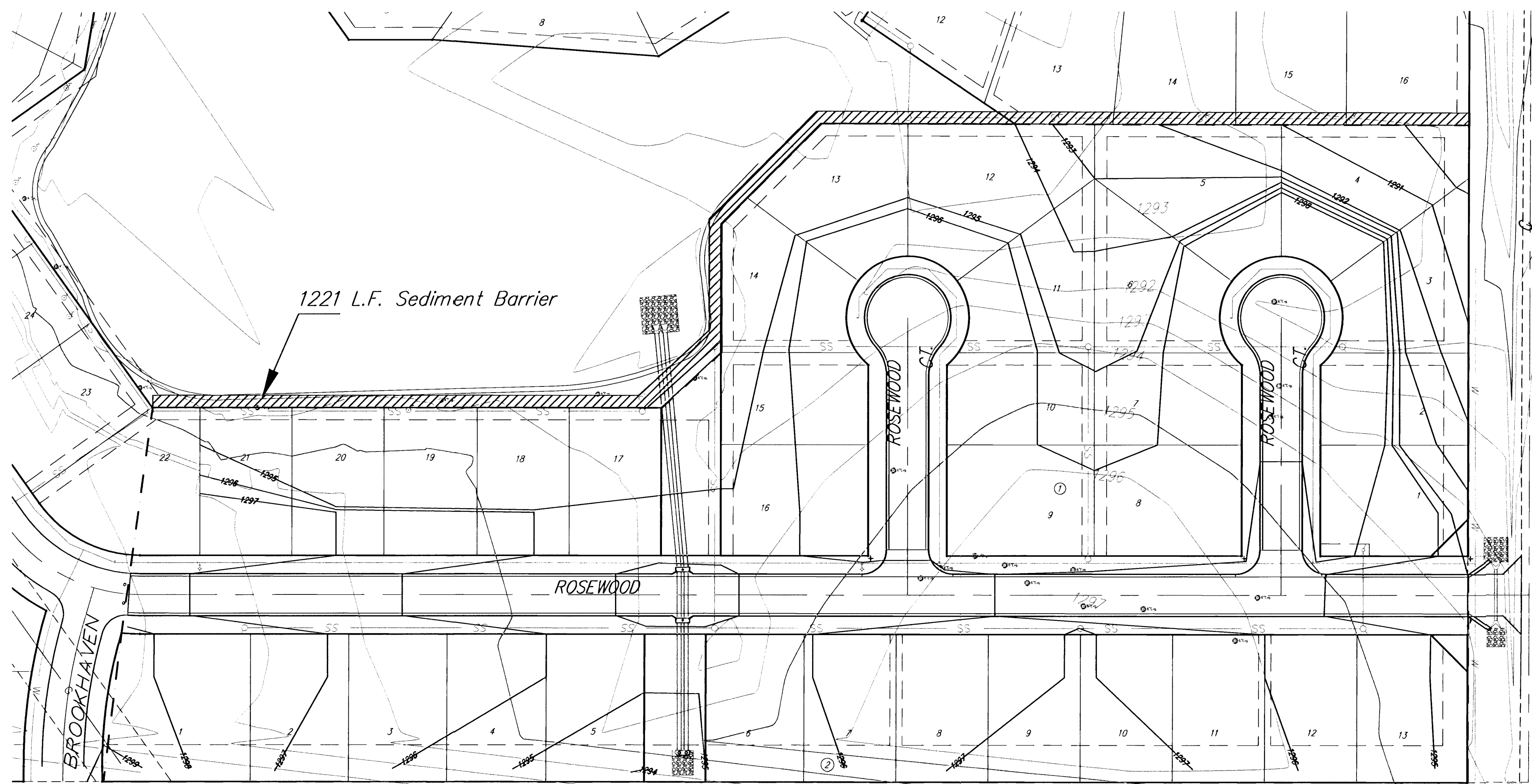


POND EXCAVATION FOR PROJECT FILL  
FOR POND COORDINATES SEE KEY MAP

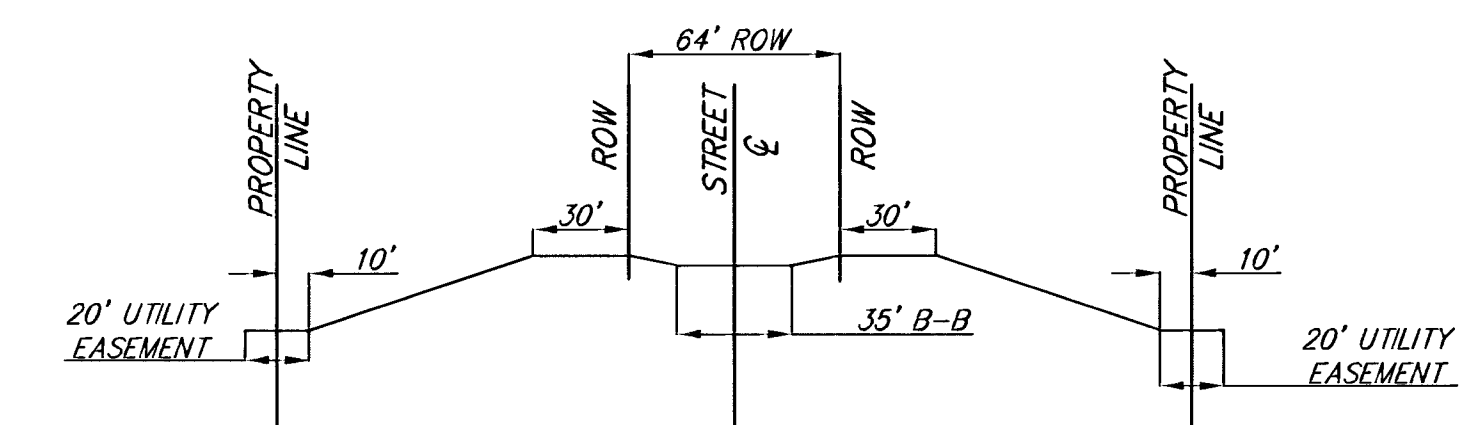


NORTHERN PORTION PHASE 2



SOUTHERN PORTION PHASE 2

SITE EARTHWORK TOTALS	
FILL	19188 cu yds
CUT	19612 cu yds
TOTAL	424 cu yds cut



TYPICAL LOT SECTION

PROPOSED FILL TO BE TAKEN FROM POND AS INDICATED.  
MATCH PROPOSED GRADING TO EASEMENT GRADING DONE WITH SANITARY SEWER PROJECT #468-83538  
SEED, FERTILIZE AND MULCH DISTURBED LOTS BETWEEN RIGHT-OF-WAY AND REAR-YARD UTILITY EASEMENTS.



SCALE: 1" = 60'

CONSTRUCTION LIMITS

<b>Whispering Lakes Phase 2 Site Earthwork WICHITA, KANSAS</b>		
	<b>Ruggles &amp; Bohm, P.A.</b> Engineering, Surveying, Land Planning	
	924 North Main (316) 264-8008 Wichita, Kansas 67203 (316) 264-4621 fax www.rbkansas.com E-mail: info@rbkansas.com	
DESIGN CMB DRAWN E.JG REVIEW UTILITY	PROJECT NUMBER 472-83624	SHEET 11 OF 31 DATE Nov. 26, 2002
DRAWING FILE Details [Site Grading 01]		DATE Nov. 26, 2002