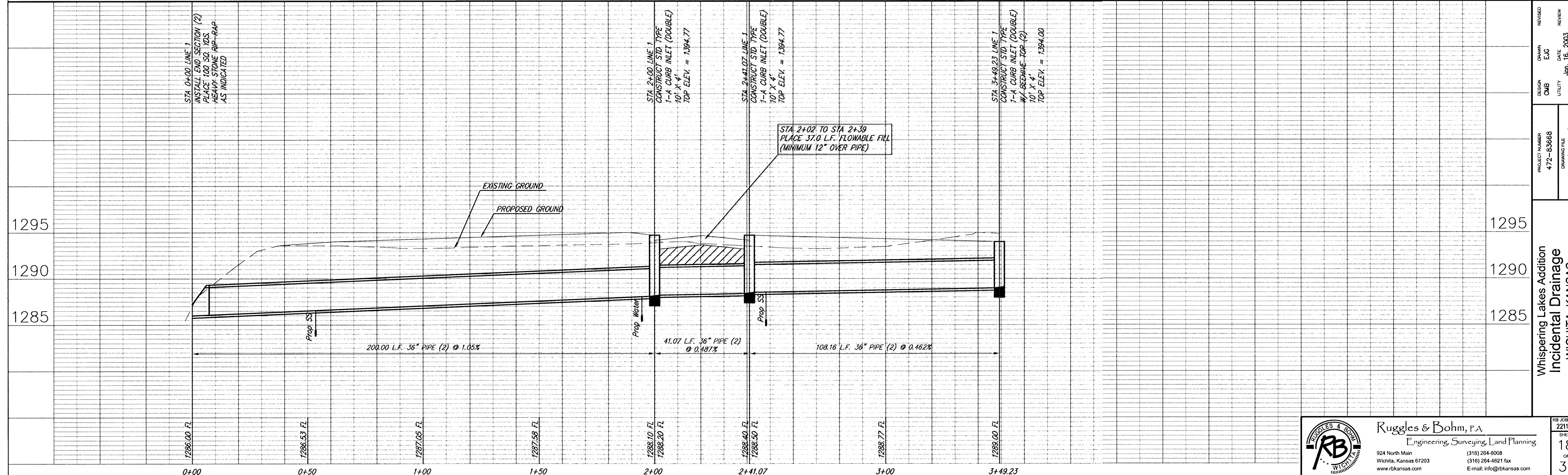
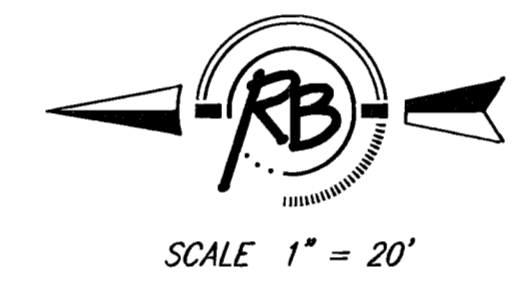


Whispering Lakes Addition



DESIGN	CMB	UTILITY	DATE	REVIEW
PROJECT NUMBER	472-63668	DRAWING FILE	SWS [SWS 01]	
DATE	Jan. 16, 2003			
Whispering Lakes Addition Incidental Drainage WICHITA, KANSAS				
RB JOB	221E	SHEET	18	OF
				31

Ruggles & Bohm, P.A.
Engineering, Surveying, Land Planning

924 North Main
Wichita, Kansas 67203
www.rbkansas.com

(316) 264-8008
(316) 264-4621 fax
E-mail: info@rbkansas.com