

**BENCHMARKS:**

BM #1: 80d Spike in West face of North High Line Pole in East R/W Tyler Road 1/2 mile of South of 37th Street North. Elev. = 176.05 City Datum (1363.45 NGVD)

BM #2: "□" Cut Top of Curb on West side of Pepper Ridge 15± South of Northeast Corner Lot 23, Block 5, Forest Lakes West Addition. Elev. = 157.12 City Datum (1344.52 NGVD)

Curve #2  
Curve Data Based on Centerline  
Rad. = 400' Delta = 23° 25' 32" Tangent = 82.93'  
Arc = 163.54' L.C. = 162.40' Del/Ft. = 4.29722 Min.

Station	Arc	B' Lt.	B' Rt.	Defl.	T. Defl.
1+58.80	16.20'	17.21'	15.19'	0°00'00"	0°00'00"
1+75.00	25.00'	26.56'	23.43'	1°47'26"	2°57'03"
2+00.00	25.00'	26.56'	23.43'	1°47'26"	4°44'29"
2+25.00	25.00'	26.56'	23.43'	1°47'26"	6°31'54"
2+50.00	25.00'	26.56'	23.43'	1°47'26"	8°19'20"
2+75.00	25.00'	26.56'	23.43'	1°47'26"	10°06'46"
3+00.00	25.00'	26.56'	23.43'	1°47'26"	11°42'46"
3+22.34	22.34'	23.73'	20.94'	1°36'00"	11°42'46"

Curve #3  
Curve Data Based on Centerline  
Rad. = 300' Delta = 31° 55' 26" Tangent = 85.81'  
Arc = 167.15' L.C. = 165.00' Del/Ft. = 5.72968 Min.

Station	Arc	B' Lt.	B' Rt.	Defl.	T. Defl.
3+22.34	2.66'	2.44'	2.88'	0°00'00"	0°00'00"
3+25.00	25.00'	22.91'	27.08'	2°23'15"	2°23'15"
3+50.00	25.00'	22.91'	27.08'	2°23'15"	4°46'30"
3+75.00	25.00'	22.91'	27.08'	2°23'15"	6°69'45"
4+00.00	25.00'	22.91'	27.08'	2°23'15"	8°33'00"
4+25.00	25.00'	22.91'	27.08'	2°23'15"	10°26'15"
4+50.00	25.00'	22.91'	27.08'	2°23'15"	12°19'30"
4+75.00	25.00'	22.91'	27.08'	2°23'15"	14°12'45"
4+89.49	14.49'	13.28'	15.70'	1°23'02"	15°57'43"

Scale: 1" = 20' Horizontal  
1" = 5' Vertical  
• = Iron

P.V.I.  
Elev. = 161.24  
NO V.C.

P.V.I.  
Elev. = 165.70  
60.24' V.C.

P.V.I.  
Elev. = 163.30  
30' V.C.

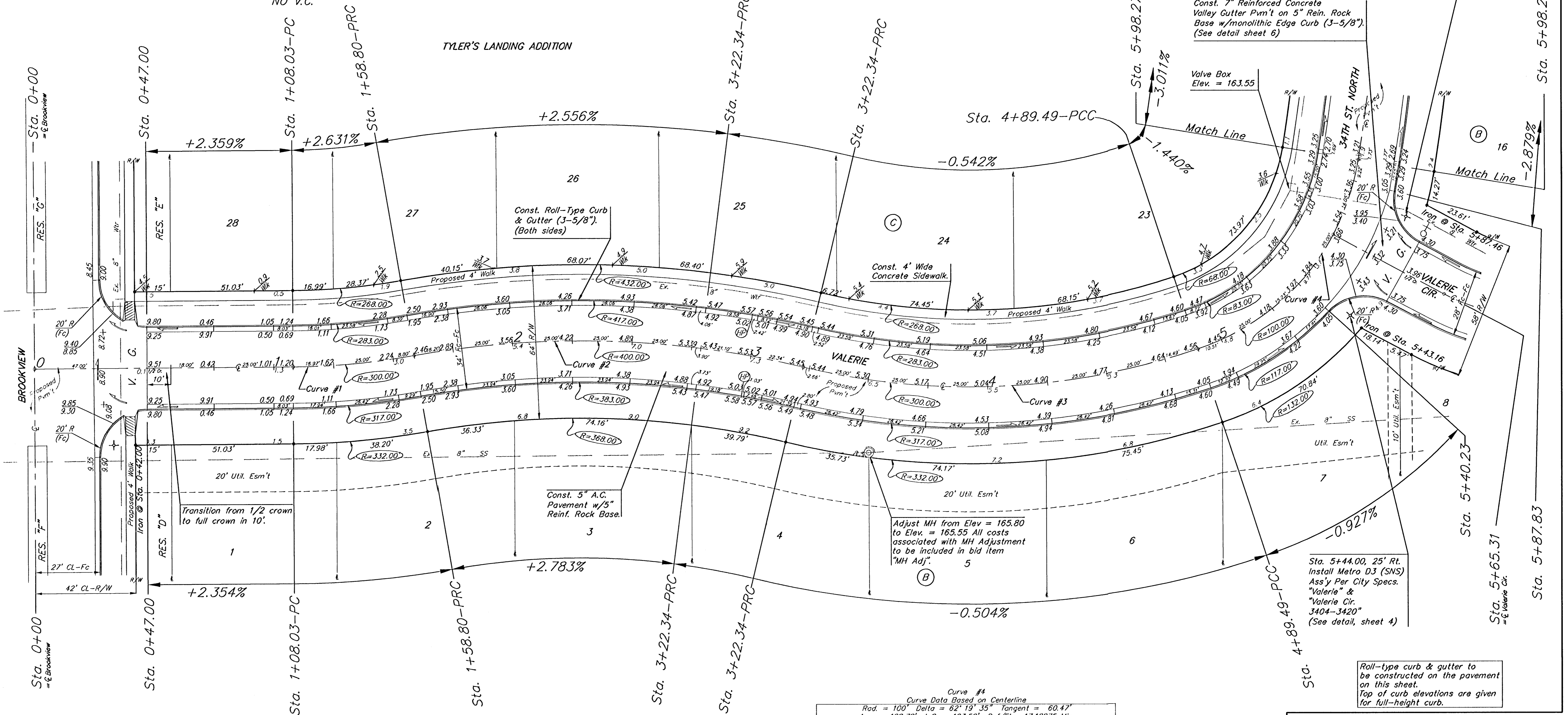
Sta. 5+82.00, 25' Rt.  
Install Metro DJ (SNS)  
Ass'y Per City Specs.  
"34th St." &  
"Valerie Cir."  
3404-3420"  
(See detail, sheet 4)

Const. 7" Reinforced Concrete  
Valley Cutter P'm't on 5" Rein. Rock  
Base w/monolithic Edge Curb (3-5/8").  
(See detail sheet 6)

Valve Box  
Elev. = 163.55

Match Line

Match Line



Curve #1  
Curve Data Based on Centerline  
Rad. = 300' Delta = 9° 41' 47" Tangent = 25.45'  
Arc = 50.77' L.C. = 50.71' Del/Ft. = 5.72960 Min.

Station	Arc	B' Lt.	B' Rt.	Defl.	T. Defl.
1+08.03	16.97'	15.55'	18.38'	1°37'14"	1°37'14"
1+25.00	25.00'	22.91'	27.08'	2°23'14"	2°23'14"
1+50.00	25.00'	22.91'	27.08'	2°23'14"	4°46'28"
1+58.80	8.80'	8.07'	9.53'	0°50'26"	4°50'54"

P.V.I.  
Elev. = 165.70  
55.34' V.C.

Curve #4  
Curve Data Based on Centerline  
Rad. = 100' Delta = 62° 19' 35" Tangent = 60.47'  
Arc = 108.78' L.C. = 103.50' Del/Ft. = 17.18875 Min.

Station	Arc	B' Lt.	B' Rt.	Defl.	T. Defl.
4+89.49	10.51'	7.88'	13.13'	0°00'00"	0°00'00"
5+00.00	25.00'	18.70'	31.17'	7°09'43"	10°10'22"
5+25.00	25.00'	18.70'	31.17'	7°09'43"	14°32'09"
5+50.00	9.77'	7.32'	12.21'	2°47'56"	17°20'05"
5+65.31	15.31'	11.42'	19.11'	4°23'10"	21°43'15"
5+75.00	9.69'	7.26'	12.11'	2°46'33"	24°29'48"
5+87.83	12.83'	9.62'	16.03'	3°40'32"	28°10'20"
5+98.27	10.44'	7.83'	13.05'	2°59'28"	31°09'48"

Roll-type curb & gutter to be constructed on the pavement on this sheet. Top of curb elevations are given for full-height curb.

TYLER'S LANDING ADDITION  
**VALERIE**  
STA. 0+00 TO STA. 5+98.27

**BAUGHMAN COMPANY P.A.**  
ENGINEERING, SURVEYING, & PLANNING  
318-282-1221 • 315 ELLIS • WICHITA, KANSAS 67211

PROJECT NUMBER  
**472-83891**

DESIGN: NBW DRAWN: GNX APPROVED: DATE: 6/4/03 SCALE: NOTED

SHEET **8** OF **33**