

BENCHMARKS:

BM #1: 80d Spike in West face of North High Line Pole in East R/W Tyler Road 1/2 mile of South of 37th Street North. Elev. = 176.05 City Datum (1363.45 NGVD)

BM #2: "□" Cut Top of Curb on West side of Pepper Ridge 15± South of Northeast Corner Lot 23, Block 5, Forest Lakes West Addition. Elev. = 157.12 City Datum (1344.52 NGVD)

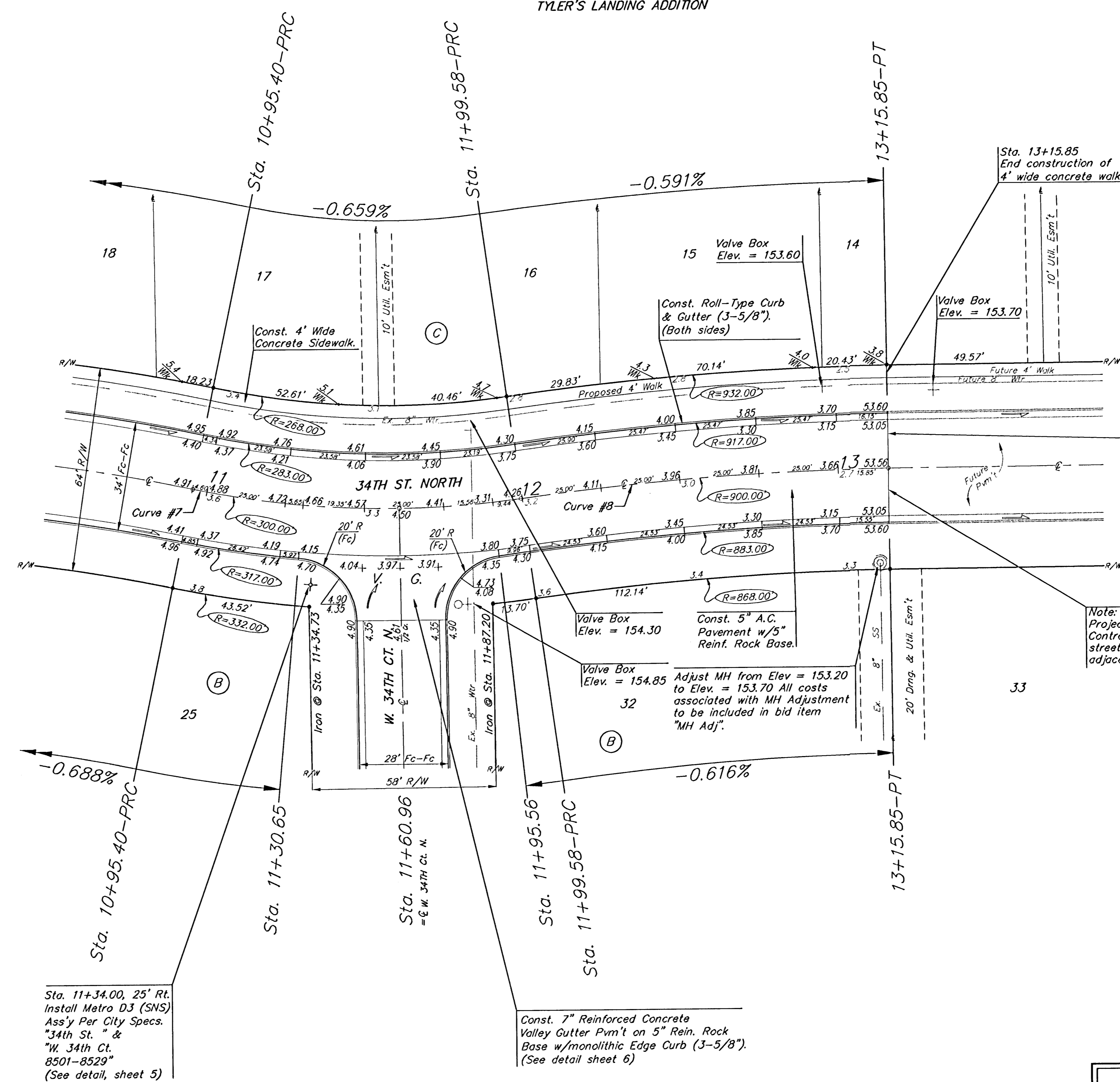
Scale: 1" = 20' Horizontal
1" = 5' Vertical
• = Iron

Curve #7
Curve Data Based on Centerline
Rad. = 300' Delta = 19° 53' 48" Tangent = 52.62'
Arc = 104.18' L.C. = 103.66' Def/Ft. = 5.72951 Min.

Station	Arc	8' Lt.	8' Rt.	Defl.	T. Defl.
10+95.40	-	-	-	0°00'00"	0°00'00"
11+00.00	4.60'	4.22'	4.98'	0°26'21"	0°26'21"
11+25.00	25.00'	22.91'	27.08'	2°23'15"	2°49'36"
11+30.65	5.65'	5.18'	6.12'	0°32'25"	3°21'58"
11+50.00	19.35'	17.73'	20.96'	1°50'52"	5°12'50"
11+60.96	10.96'	10.05'	11.87'	1°02'48"	6°15'38"
11+75.00	14.04'	12.87'	15.21'	1°50'26"	7°36'04"
11+95.56	20.56'	18.84'	22.27'	1°57'48"	9°33'52"
11+99.58	4.02'	3.69'	4.36'	0°23'02"	9°56'54"

Curve #8
Curve Data Based on Centerline
Rad. = 900' Delta = 7° 24' 07" Tangent = 58.22'
Arc = 116.27' L.C. = 116.19' Def/Ft. = 1.90985 Min.

Station	Arc	8' Lt.	8' Rt.	Defl.	T. Defl.
11+99.58	-	-	-	0°00'00"	0°00'00"
12+00.00	0.42'	0.43'	0.41'	0°00'48"	0°00'48"
12+25.00	25.00'	25.69'	24.30'	0°47'45"	0°48'33"
12+50.00	25.00'	25.69'	24.30'	0°47'45"	1°36'18"
12+75.00	25.00'	25.69'	24.30'	0°47'44"	2°24'02"
13+00.00	25.00'	25.69'	24.30'	0°47'45"	3°11'47"
13+15.85	15.85'	16.30'	15.42'	0°30'12"	3°42'04"



Sta. 13+15.85
End construction of
4' wide concrete walk.

Sta. 13+15.85
End construction of
5" A.C. Pvm't w/5"
Reinforced Rock Base.

Note: Match line with
Project #472-83692.
Contractor shall coordinate
street construction with
adjacent project.

Sta. 11+34.00, 25' Rt.
Install Metro DJ (SNS)
Ass'y Per City Specs.
"34th St." &
"W. 34th Ct."
8501-8529"
(See detail, sheet 5)

Const. 7" Reinforced Concrete
Valley Gutter Pvm't on 5" Rein. Rock
Base w/monolithic Edge Curb (3-5/8").
(See detail sheet 6)

Roll-type curb & gutter to
be constructed on the pavement
on this sheet.
Top of curb elevations are given
for full-height curb.

TYLER'S LANDING ADDITION
34TH ST. NORTH
STA. 10+95.40 TO STA. 13+15.85

BAUGHMAN COMPANY P.A.
ENGINEERING, SURVEYING, & PLANNING
315-262-7271 • 315 ELLIS • WICHITA, KANSAS 67211

PROJECT NUMBER
472-83691

DESIGN NBW DRAWN GNX APPROVED DATE 6/4/03 SCALE NOTED SHEET **10** OF **33**

Tyler's Landing S174 02-11-E469