

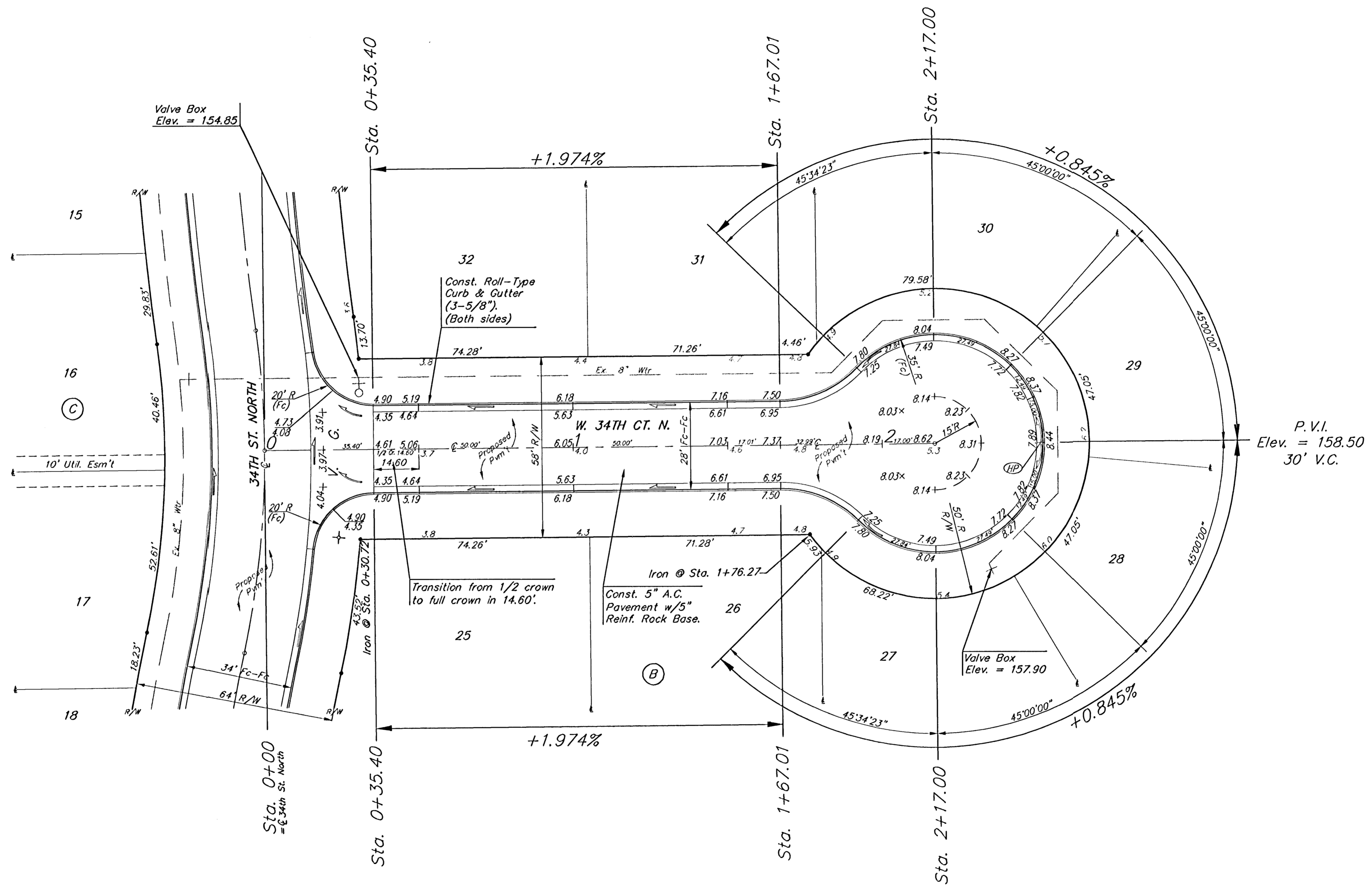
BENCHMARKS:

BM #1: 80d Spike in West face of North High Line Pole in East R/W Tyler Road 1/2 mile of South of 37th Street North. Elev. = 176.05 City Datum (1363.45 NGVD)

BM #2: "□" Cut Top of Curb on West side of Pepper Ridge 15'± South of Northeast Corner Lot 23, Block 5, Forest Lakes West Addition. Elev. = 157.12 City Datum (1344.52 NGVD)

Scale: 1" = 20' Horizontal
1" = 5' Vertical
● = Iron

TYLER'S LANDING ADDITION



Roll-type curb & gutter to be constructed on the pavement on this sheet.
Top of curb elevations are given for full-height curb.

TYLER'S LANDING ADDITION
W. 34TH CT. N.
LOT 25-32, BLOCK B

BAUGHMAN COMPANY P.A.
ENGINEERING, SURVEYING, & PLANNING
315-262-7271 • 315 ELLIS • WICHITA, KANSAS 67211

PROJECT NUMBER
472-83691

DESIGN: NBW DRAWN: GHX APPROVED: _____ DATE: 6/4/03 SCALE: NOTED

SHEET **14** OF **33**

07-11-E-469