

BENCHMARKS:

BM #1: 80d Spike in West face of North High Line Pole in East R/W Tyler Road 1/2 mile of South of 37th Street North. Elev. = 176.05 City Datum (1363.45 NGVD)

BM #2: "□" Cut Top of Curb on West side of Pepper Ridge 15'± South of Northeast Corner Lot 23, Block 5, Forest Lakes West Addition. Elev. = 157.12 City Datum (1344.52 NGVD)

TYLER'S LANDING ADDITION

P.V.I.
Elev. = 154.81
No V.C.

Const. 7" Reinforced Concrete Valley Gutter Pvm't on 5" Rein. Rock Base w/monolithic Edge Curb (3-5/8"). (See detail sheet 5)

Scale: 1" = 20' Horizontal
• = Iron

Curve #1
Curve Data Based on Face of Curb
Rad. = 384.40' Delta = 21° 15' 46" Tangent = 72.16'
Arc = 142.66' L.C. = 141.84' Del./Ft. = 4.47135 Min.

Station	Arc	FACE CHORD LENGTHS	8" Lt.	Defl.	T. Defl.
A	20.38'	19.95'	19.95'	0'00"00"	0'00"00"
B	20.38'	19.95'	19.95'	1'31"07"	1'31"07"
C	20.38'	19.95'	19.95'	1'31"08"	3'02"15"
D	20.38'	19.95'	19.95'	1'31"07"	4'33"23"
E	20.38'	19.95'	19.95'	1'31"07"	6'04"30"
F	20.38'	19.95'	19.95'	1'31"08"	7'35"38"
G	20.38'	19.95'	19.95'	1'31"07"	9'06"45"
H	20.38'	19.95'	19.95'	1'31"08"	10'37"53"

Curve #2
Curve Data Based on Face of Curb
Rad. = 417' Delta = 19° 27' 52" Tangent = 71.52'
Arc = 141.66' L.C. = 140.98' Del./Ft. = 4.12208 Min.

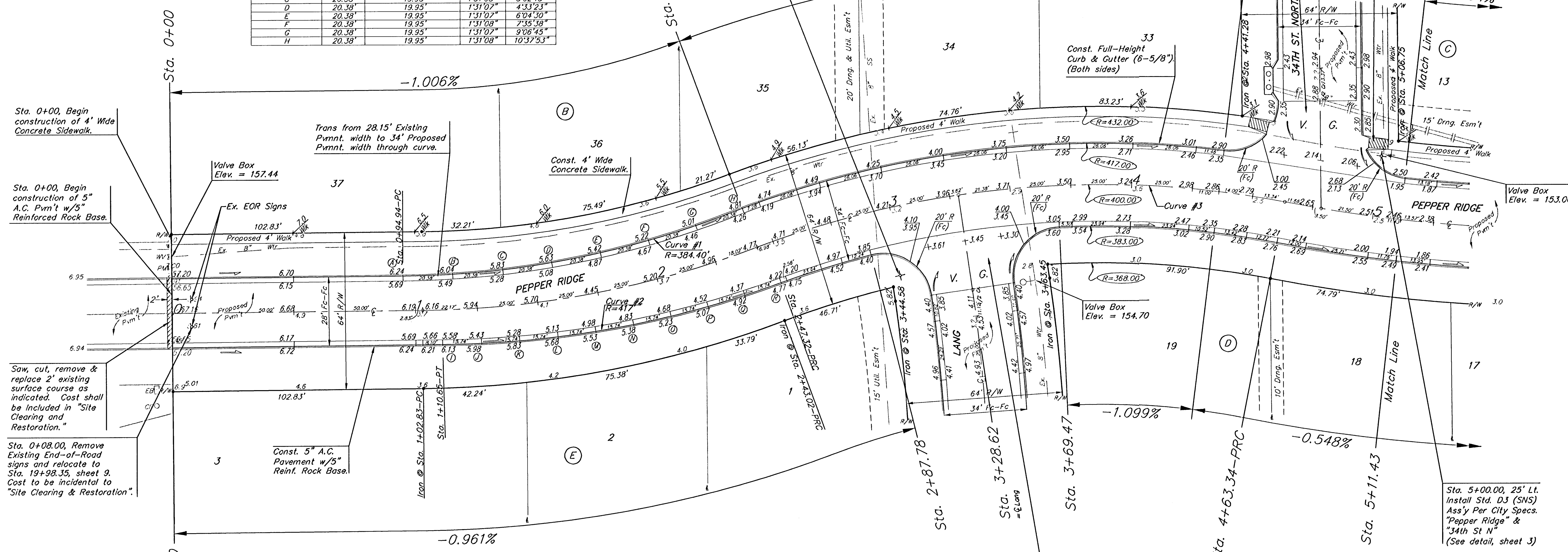
Station	Arc	FACE CHORD LENGTHS	8" Lt.	Defl.	T. Defl.
I	16.04'	16.04'	16.04'	0'00"00"	0'00"00"
J	15.74'	16.04'	16.04'	1'04"53"	1'04"53"
K	15.74'	16.04'	16.04'	1'04"53"	2'09"46"
L	15.74'	16.04'	16.04'	1'04"53"	3'14"39"
M	15.74'	16.04'	16.04'	1'04"53"	4'19"32"
N	15.74'	16.04'	16.04'	1'04"52"	5'24"24"
O	15.74'	16.04'	16.04'	1'04"53"	6'29"17"
P	15.74'	16.04'	16.04'	1'04"53"	7'34"10"
Q	15.74'	16.04'	16.04'	1'04"53"	8'39"03"
R	15.74'	16.04'	16.04'	1'04"53"	9'43"56"

Curve #3
Curve Data Based on Centerline
Rad. = 400' Delta = 31° 33' 32" Tangent = 113.03'
Arc = 220.32' L.C. = 217.55' Del./Ft. = 4.29723 Min.

Station	Arc	8" Lt.	8" Rt.	Defl.	T. Defl.
2+43.02	-	-	-	0'00"00"	0'00"00"
2+50.00	6.97'	7.41'	6.53'	0'29"57"	0'29"57"
2+75.00	25.00'	26.56'	23.43'	1'47"26"	2'17"23"
3+00.00	25.00'	26.56'	23.43'	1'47"26"	4'04"49"
3+25.00	25.00'	26.56'	23.43'	1'47"26"	5'52"15"
3+28.62	3.62'	3.84'	3.39'	0'15"33"	6'07"48"
3+50.00	21.38'	26.56'	23.43'	1'31"52"	7'39"40"
3+75.00	25.00'	26.56'	23.43'	1'47"26"	9'27"06"
4+00.00	25.00'	26.56'	23.43'	1'47"26"	11'14"32"
4+25.00	25.00'	26.56'	23.43'	1'47"26"	13'01"58"
4+50.00	25.00'	26.56'	23.43'	1'47"26"	14'49"23"
4+63.34	13.34'	14.19'	12.52'	0'57"23"	15'46"46"

Sta. 2+98.00, 28' Rt. Install Std. D3 (SNS) Ass'y Per City Specs. "Pepper Ridge" & "Lang." (See detail, sheet 3)

Const. Std. Wheelchair Ramps. (Both sides). (See detail, sheet 5).



Sta. 0+00, Begin construction of 4' Wide Concrete Sidewalk.

Sta. 0+00, Begin construction of 5" A.C. Pvm't w/5" Reinforced Rock Base.

Saw, cut, remove & replace 2' existing surface course as indicated. Cost shall be included in "Site Clearing and Restoration."

Sta. 0+08.00, Remove Existing End-of-Road signs and relocate to Sta. 19+98.35, sheet 9. Cost to be incidental to "Site Clearing & Restoration."

Roll-type curb & gutter to be constructed on the pavement on this sheet. Top of curb elevations are given for full-height curb.

TYLER'S LANDING ADDITION
PEPPER RIDGE
STA. 0+00 TO STA. 5+11.43

BAUGHMAN COMPANY P.A.
ENGINEERING, SURVEYING, & PLANNING
316-282-7271 • 315 ELLIS • WICHITA, KANSAS 67211

PROJECT NUMBER
472-83892

DESIGN NBW DRAWN GNX APPROVED DATE 6/4/03 SCALE NOTED

SHEET **6** OF **24**