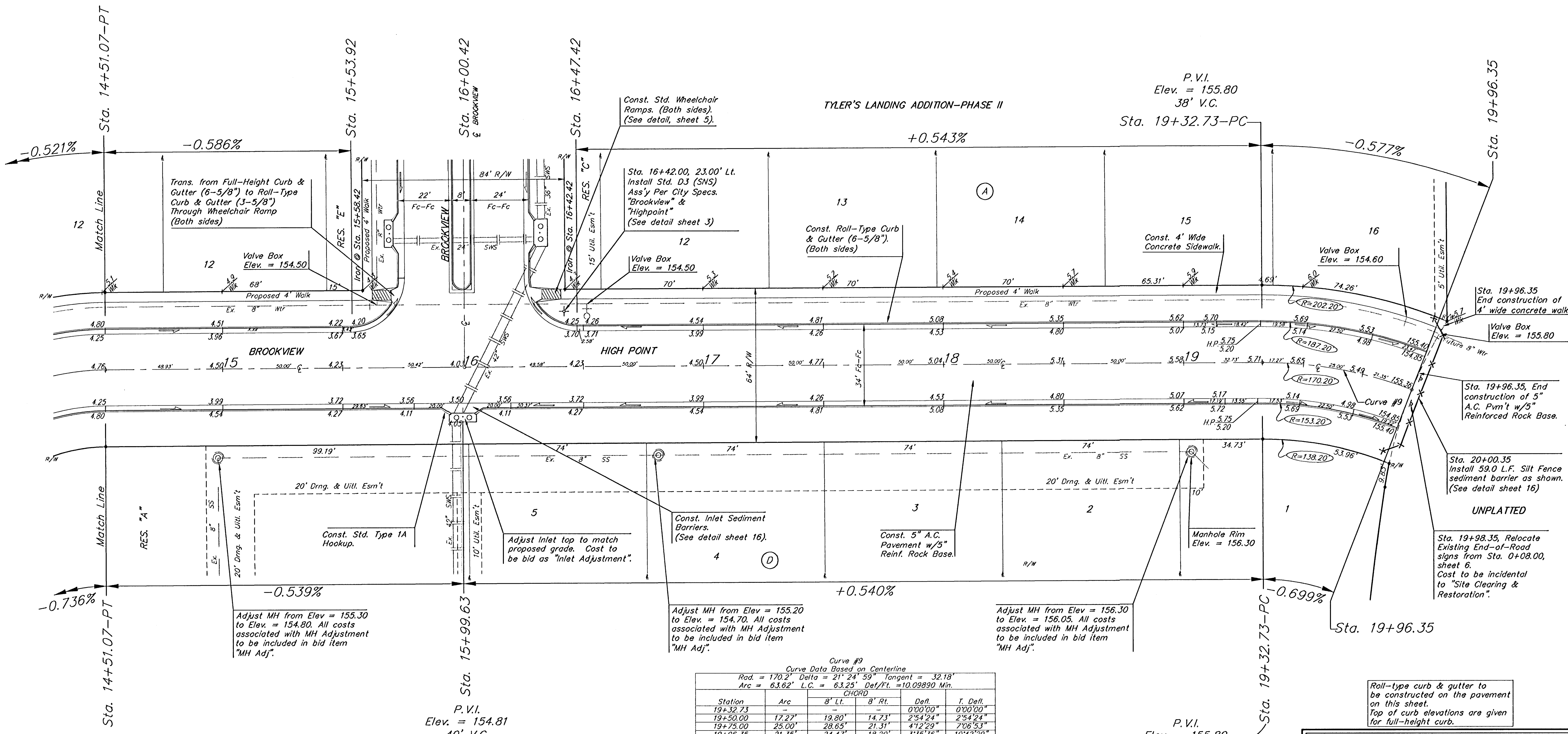


BENCHMARKS:

BM #1: 80d Spike in West face of North High Line Pole in East R/W Tyler Road 1/2 mile of South of 37th Street North. Elev. = 176.05 City Datum (1363.45 NGVD)

BM #2: "□" Cut Top of Curb on West side of Pepper Ridge 15± South of Northeast Corner Lot 23, Block 5, Forest Lakes West Addition. Elev. = 157.12 City Datum (1344.52 NGVD)

Scale: 1" = 20' Horizontal
• = Iron



Curve #9
Curve Data Based on Centerline
Rad. = 170.2' Delta = 21° 24' 59" Tangent = 32.18'
Arc = 63.62' L.C. = 63.25' Def./Ft. = 10.09890 Min.

Station	Arc	8' Lt.	8' Rt.	Defl.	T. Defl.
19+32.73	-	-	-	0°00'00"	0°00'00"
19+50.00	17.27'	19.80'	14.73'	2°54'24"	2°54'24"
19+75.00	25.00'	28.65'	21.31'	4°12'29"	7°06'53"
19+96.35	21.35'	24.47'	18.20'	3°35'36"	10°42'29"

TYLER' LANDING ADDITION-PHASE II
BROOKVIEW & HIGH POINT
STA. 14+51.07 TO STA. 19+98.35

BAUGHMAN COMPANY P.A.
ENGINEERING, SURVEYING, & PLANNING
318-262-7271 • 315 ELLIS • WICHITA, KANSAS 67211

PROJECT NUMBER
472-83692

DESIGN NBW DRAWN GAX APPROVED DATE 6/4/03 SCALE NOTED SHEET **9** OF **24**

Roll-type curb & gutter to be constructed on the pavement on this sheet. Top of curb elevations are given for full-height curb.

Adjust MH from Elev = 155.30 to Elev. = 154.80. All costs associated with MH Adjustment to be included in bid item "MH Adj".

Adjust MH from Elev = 155.20 to Elev. = 154.70. All costs associated with MH Adjustment to be included in bid item "MH Adj".

Adjust MH from Elev = 156.30 to Elev. = 156.05. All costs associated with MH Adjustment to be included in bid item "MH Adj".

Sta. 19+98.35, Relocate Existing End-of-Road signs from Sta. 0+08.00, sheet 6. Cost to be incidental to "Site Clearing & Restoration".

Sta. 20+00.35 Install 59.0 L.F. Silt Fence sediment barrier as shown. (See detail sheet 16)

Sta. 19+96.35, End construction of 5" A.C. Pvm't w/5" Reinforced Rock Base.

Sta. 19+96.35 End construction of 4' wide concrete walk. Valve Box Elev. = 155.80

P.V.I. Elev. = 155.80
38' V.C.
Sta. 19+32.73-PC

P.V.I. Elev. = 154.81
40' V.C.
Sta. 15+99.63