

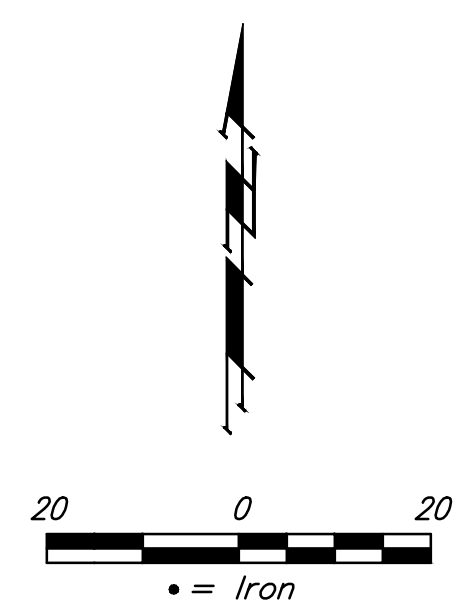
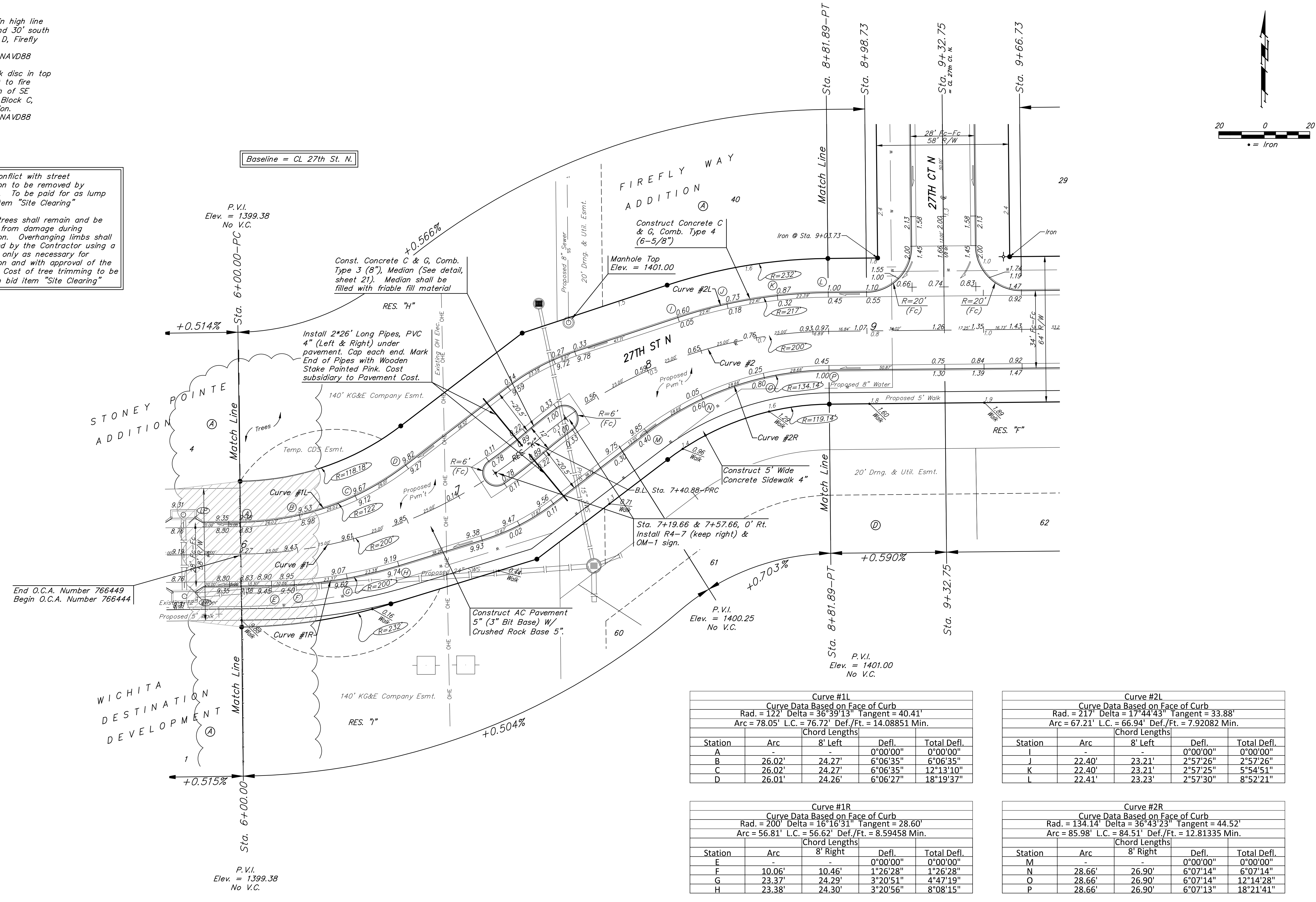
**BENCHMARKS:**  
**BM#1:** RR spike in high line pole, 40' west and 30' south of Lot 60, Block D, Firefly Way Addition.  
 Elev. = 1399.54 NAVD88

**BM#2:** Benchmark disc in top of curb, adjacent to fire hydrant 15' south of SE corner of Lot 2, Block C, Firefly Way Addition.  
 Elev. = 1396.95 NAVD88

Trees in conflict with street construction to be removed by contractor. To be paid for as lump sum bid item "Site Clearing"

All other trees shall remain and be protected from damage during construction. Overhanging limbs shall be trimmed by the Contractor using a chain saw only as necessary for construction and with approval of the Engineer. Cost of tree trimming to be included in bid item "Site Clearing"

Baseline = CL 27th St. N.



End O.C.A. Number 766449  
 Begin O.C.A. Number 766444

P.V.I.  
 Elev. = 1399.38  
 No V.C.

Const. Concrete C & G, Comb. Type 3 (8"), Median (See detail, sheet 21). Median shall be filled with friable fill material

Install 2\*26' Long Pipes, PVC 4" (Left & Right) under pavement. Cap each end. Mark End of Pipes with Wooden Stake Painted Pink. Cost subsidiary to Pavement Cost.

Manhole Top Elev. = 1401.00

P.V.I.  
 Elev. = 1400.25  
 No V.C.

P.V.I.  
 Elev. = 1401.00  
 No V.C.

P.V.I.  
 Elev. = 1399.38  
 No V.C.

Curve #1L  
 Curve Data Based on Face of Curb  
 Rad. = 122' Delta = 36°39'13" Tangent = 40.41'  
 Arc = 78.05' L.C. = 76.72' Def./Ft. = 14.08851 Min.

Station	Arc	Chord Lengths		
		8' Left	Defl.	Total Defl.
A	-	-	0°00'00"	0°00'00"
B	26.02'	24.27'	6°06'35"	6°06'35"
C	26.02'	24.27'	6°06'35"	12°13'10"
D	26.01'	24.26'	6°06'27"	18°19'37"

Curve #2L  
 Curve Data Based on Face of Curb  
 Rad. = 217' Delta = 17°44'43" Tangent = 33.88'  
 Arc = 67.21' L.C. = 66.94' Def./Ft. = 7.92082 Min.

Station	Arc	Chord Lengths		
		8' Left	Defl.	Total Defl.
I	-	-	0°00'00"	0°00'00"
J	22.40'	23.21'	2°57'26"	2°57'26"
K	22.40'	23.21'	2°57'25"	5°54'51"
L	22.41'	23.23'	2°57'30"	8°52'21"

Curve #1R  
 Curve Data Based on Face of Curb  
 Rad. = 200' Delta = 16°16'31" Tangent = 28.60'  
 Arc = 56.81' L.C. = 56.62' Def./Ft. = 8.59458 Min.

Station	Arc	Chord Lengths		
		8' Right	Defl.	Total Defl.
E	-	-	0°00'00"	0°00'00"
F	10.06'	10.46'	1°26'28"	1°26'28"
G	23.37'	24.29'	3°20'51"	4°47'19"
H	23.38'	24.30'	3°20'56"	8°08'15"

Curve #2R  
 Curve Data Based on Face of Curb  
 Rad. = 134.14' Delta = 36°43'23" Tangent = 44.52'  
 Arc = 85.98' L.C. = 84.51' Def./Ft. = 12.81335 Min.

Station	Arc	Chord Lengths		
		8' Right	Defl.	Total Defl.
M	-	-	0°00'00"	0°00'00"
N	28.66'	26.90'	6°07'14"	6°07'14"
O	28.66'	26.90'	6°07'14"	12°14'28"
P	28.66'	26.90'	6°07'13"	18°21'41"