

CHAPEL HILL ADDITION TO WICHITA, SEDGWICK COUNTY, KANSAS

B.M. - BENCH MARK DISC AT S.W. CORNER 13TH STREET NORTH AND GREENWICH ROAD.
ELEV.=1385.51 M.S.L.
ELEV.=198.11 CITY DATUM

B.M. - RAILROAD SPIKE IN EAST FACE OF POWER POLE AT N.E. CORNER 13TH STREET NORTH AND GREENWICH ROAD.
ELEV.=1383.61 M.S.L.
ELEV.=196.21 CITY DATUM

MINIMUM PAD ELEVATIONS (LOWEST OPENING) AS FOLLOWS:
BLOCK 1
LOTS 1 THROUGH 13
ELEV = 175.60 CITY DATUM
ELEV = 1363.0 M.S.L.

PROJECT NO.	SHEET NO.	TOTAL SHEETS
472-76-245-83077-000-001	2	60

N.W. Corner, S.W. 1/4 Sec. 10, T27S, R2E of the 6th P.M. Found R.R. Spike in Pavt.

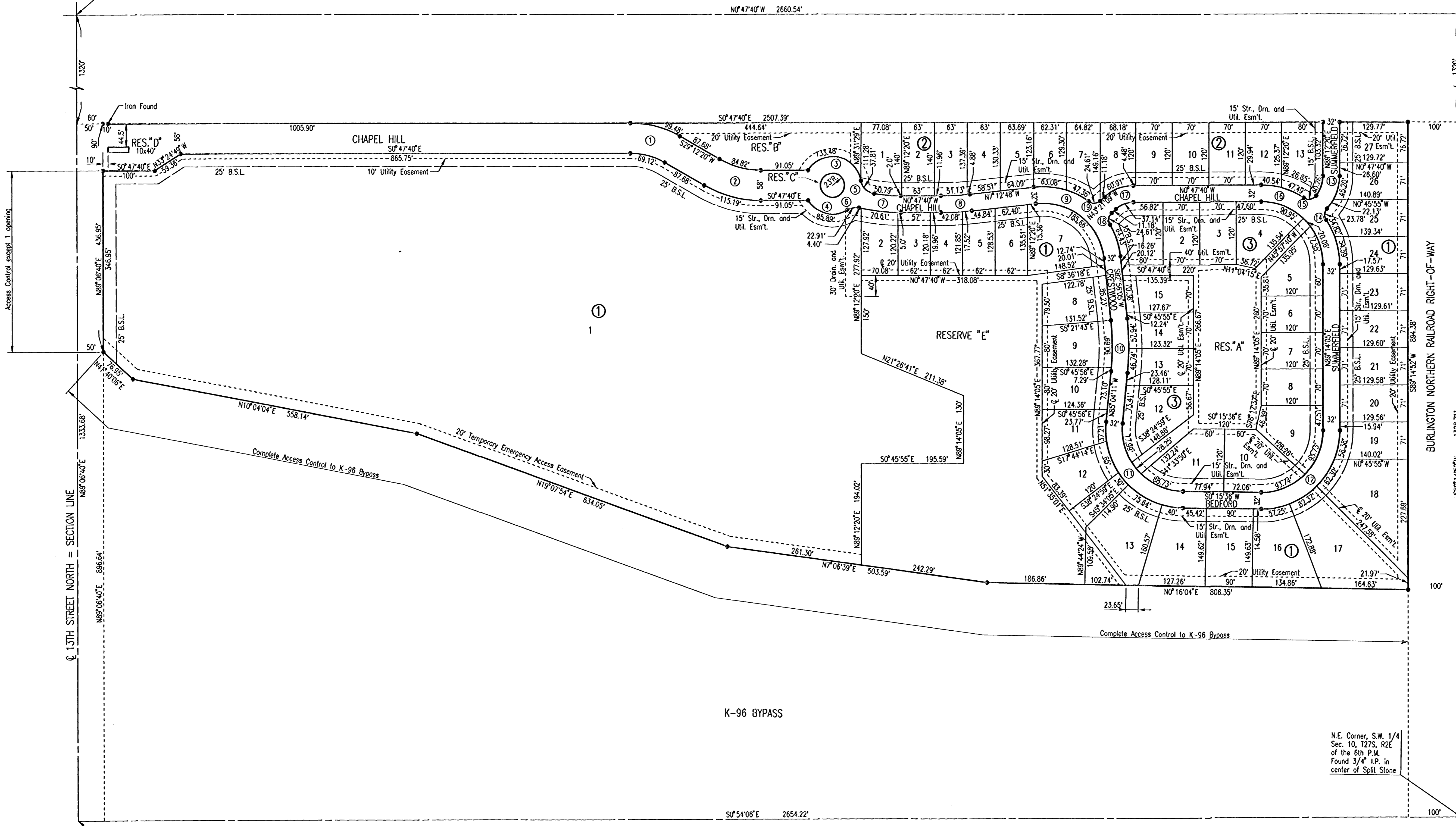
SCALE: 1"=100'
● = IRON SET UNLESS OTHERWISE NOTED
B.S.L. = BUILDING SETBACK LINE
C.A.C. = COMPLETE ACCESS CONTROL

S.W. Corner, S.W. 1/4 Sec. 10, T27S, R2E of the 6th P.M. Found 3/4" I.P.

S.E. Corner, S.W. 1/4 Sec. 10, T27S, R2E of the 6th P.M. Found Lead Plug

CURVE TABLE

- ① = CURVE NUMBER
- CURVE NO. 1
150'R.
Δ=30°00'00"
132'R.
- CURVE NO. 2
162'R.
Δ=30°00'00"
220'R.
- CURVE NO. 3
55'R.
Δ=139°02'55"
- CURVE NO. 4
55'R.
Δ=89°28'19"
- CURVE NO. 5
30'R.
Δ=72°12'50"
- CURVE NO. 6
30'R.
Δ=43°44'43"
- CURVE NO. 7
336.14'R.
Δ=8°39'23"
568.44'R.
Δ=12°27'08"
- CURVE NO. 8
500'R.
Δ=6°25'08"
532'R.
- CURVE NO. 9
150'R.
Δ=90°08'53"
118'R.
- CURVE NO. 10
500'R.
Δ=11°59'44"
468'R.
- CURVE NO. 11
118'R.
Δ=94°40'13"
150'R.
- CURVE NO. 12
118'R.
Δ=91°01'32"
150'R.
- CURVE NO. 13
61.16'R.
Δ=37°43'23"
93.16'R.
Δ=42°01'47"
- CURVE NO. 14
18'R.
Δ=79°42'19"
- CURVE NO. 15
18'R.
Δ=85°27'33"
- CURVE NO. 16
120'R.
Δ=90°01'45"
152'R.
- CURVE NO. 17
50'R.
Δ=42°33'29"
82'R.
- CURVE NO. 18
18'R.
Δ=78°19'26"
- CURVE NO. 19
18'R.
Δ=78°19'26"



BURLINGTON NORTHERN RAILROAD RIGHT-OF-WAY

CHAPEL HILL ADDITION
PLAT

Professional Engineering Consultants, P.A.
303 S. TOPEKA • WICHITA, KANSAS 67202
316-262-2691 • FAX 316-262-3003

Designed by	BER, GDD	Checked by	
Drawn by	DEP	Date	JANUARY, 2001
		Job No.	99127

DSWR GDD OPER DEF SCALE: 1"=100.00
 Q:\1999\99127\000\PLAT 06-12-2002 07:42:55 am