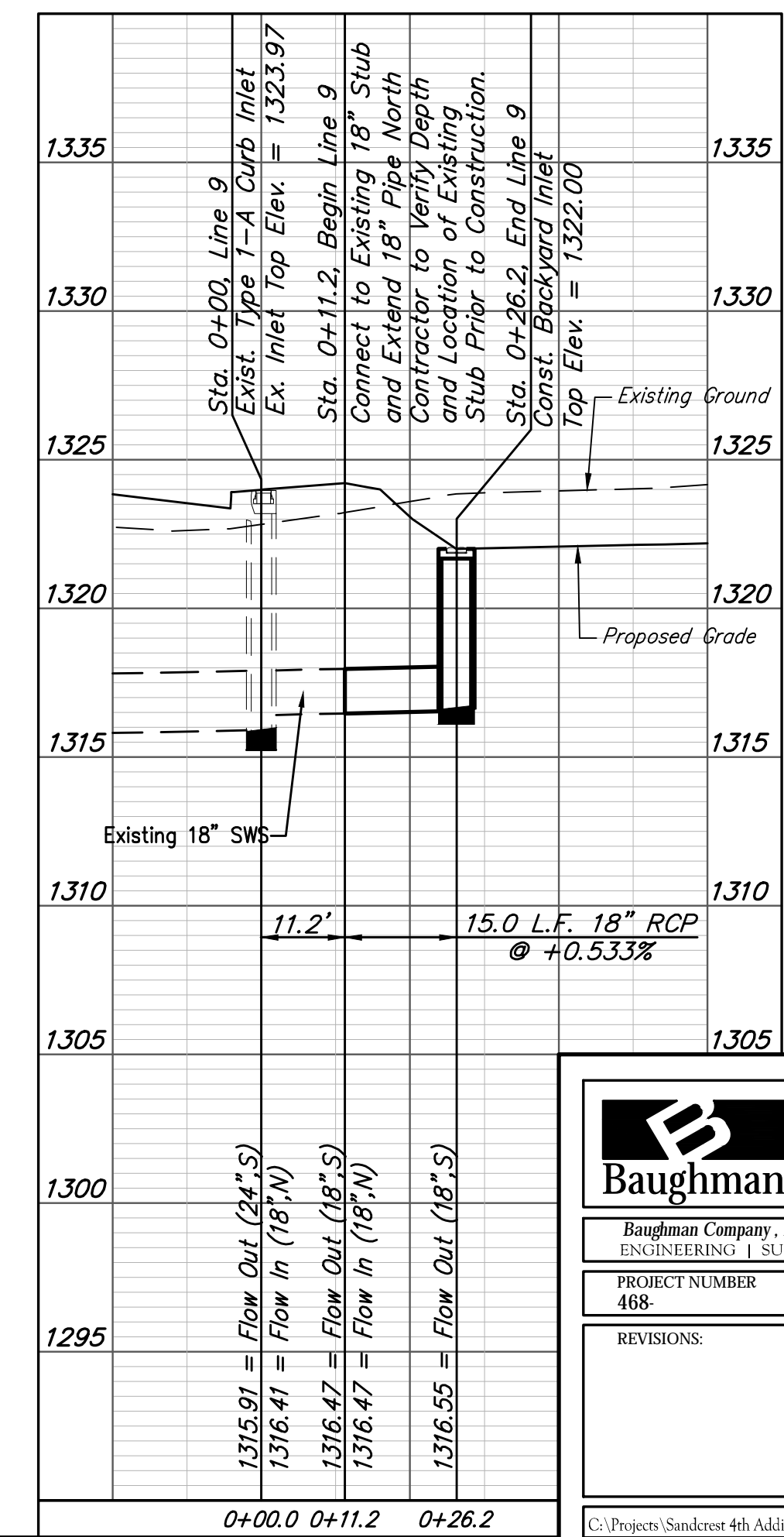
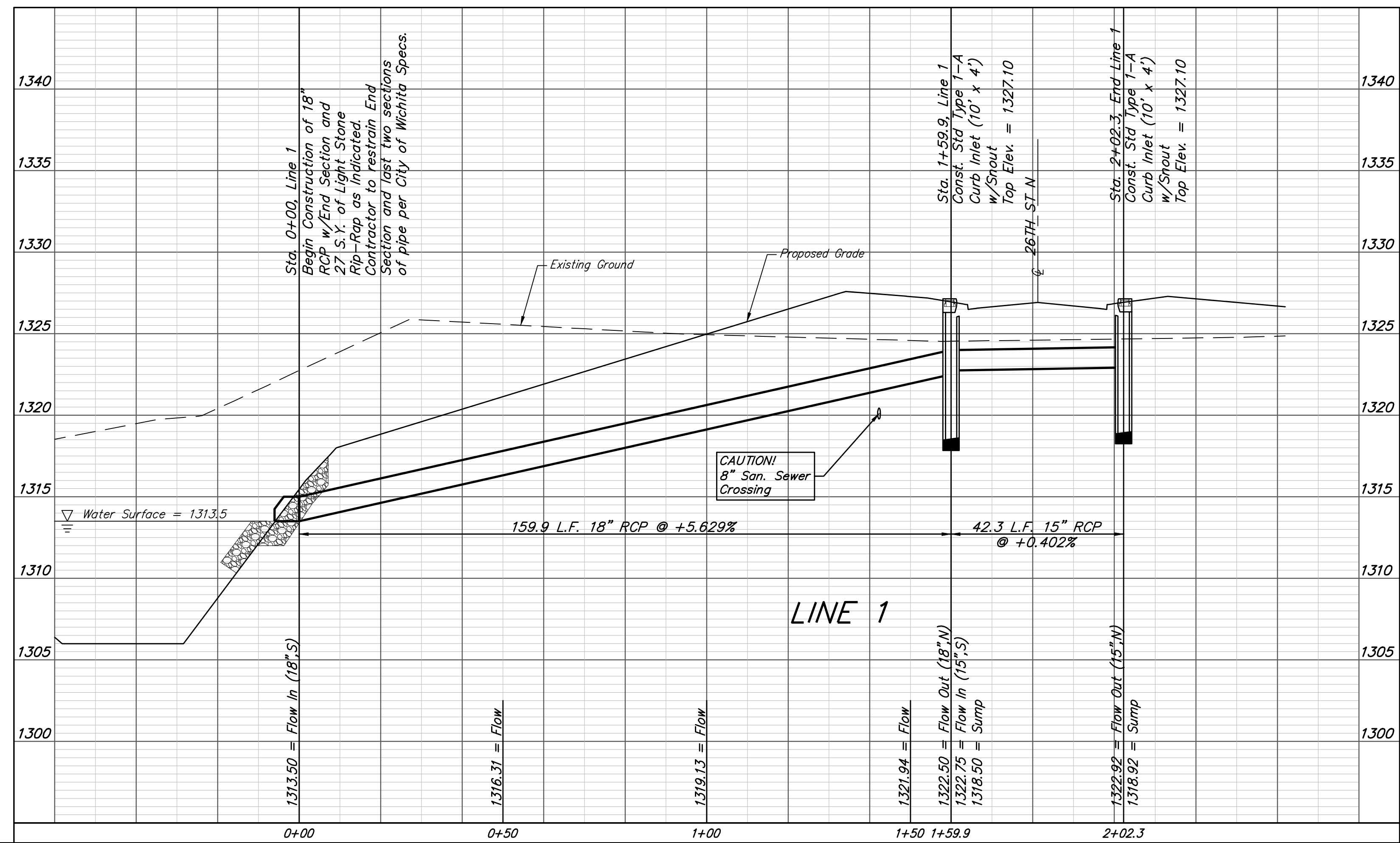
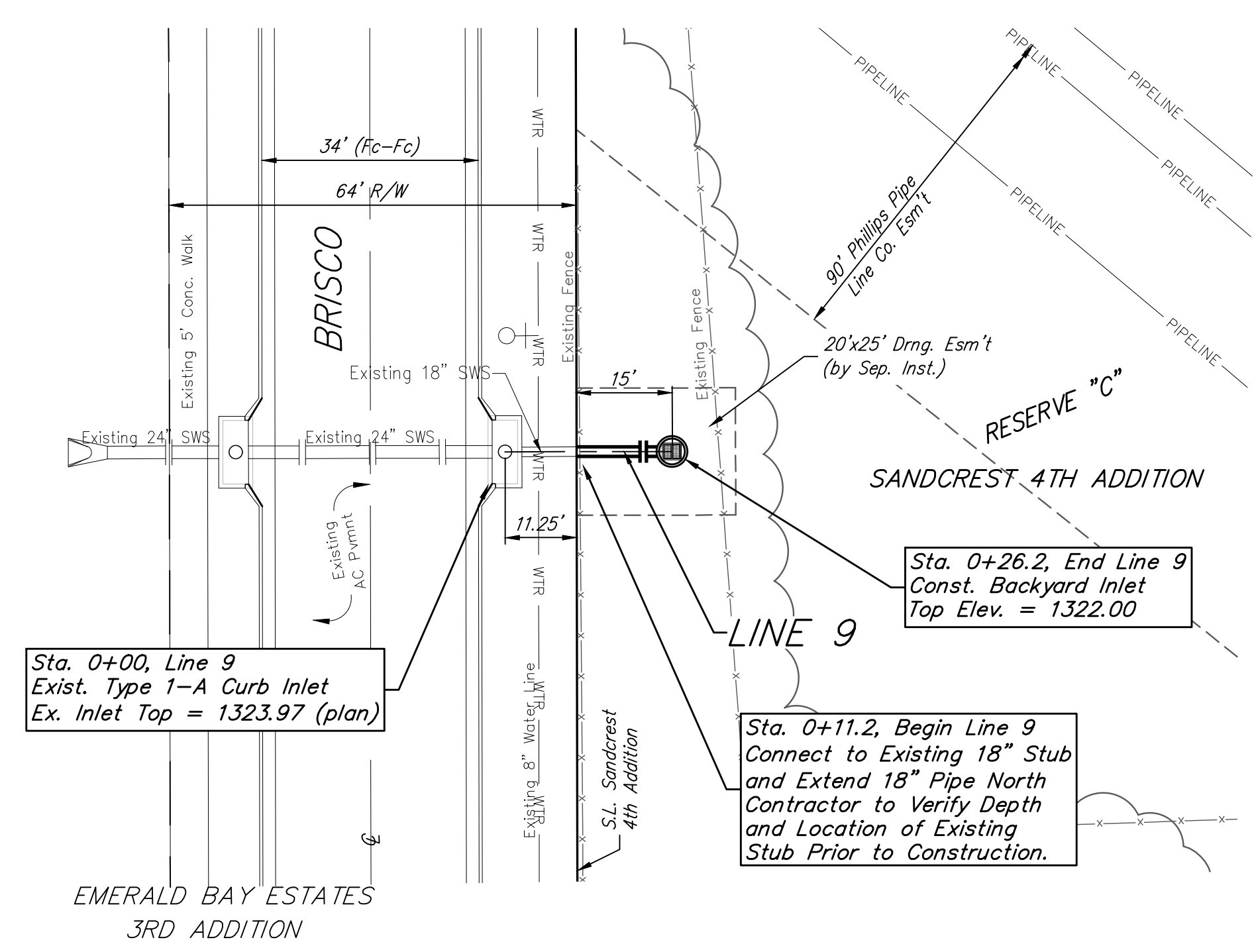
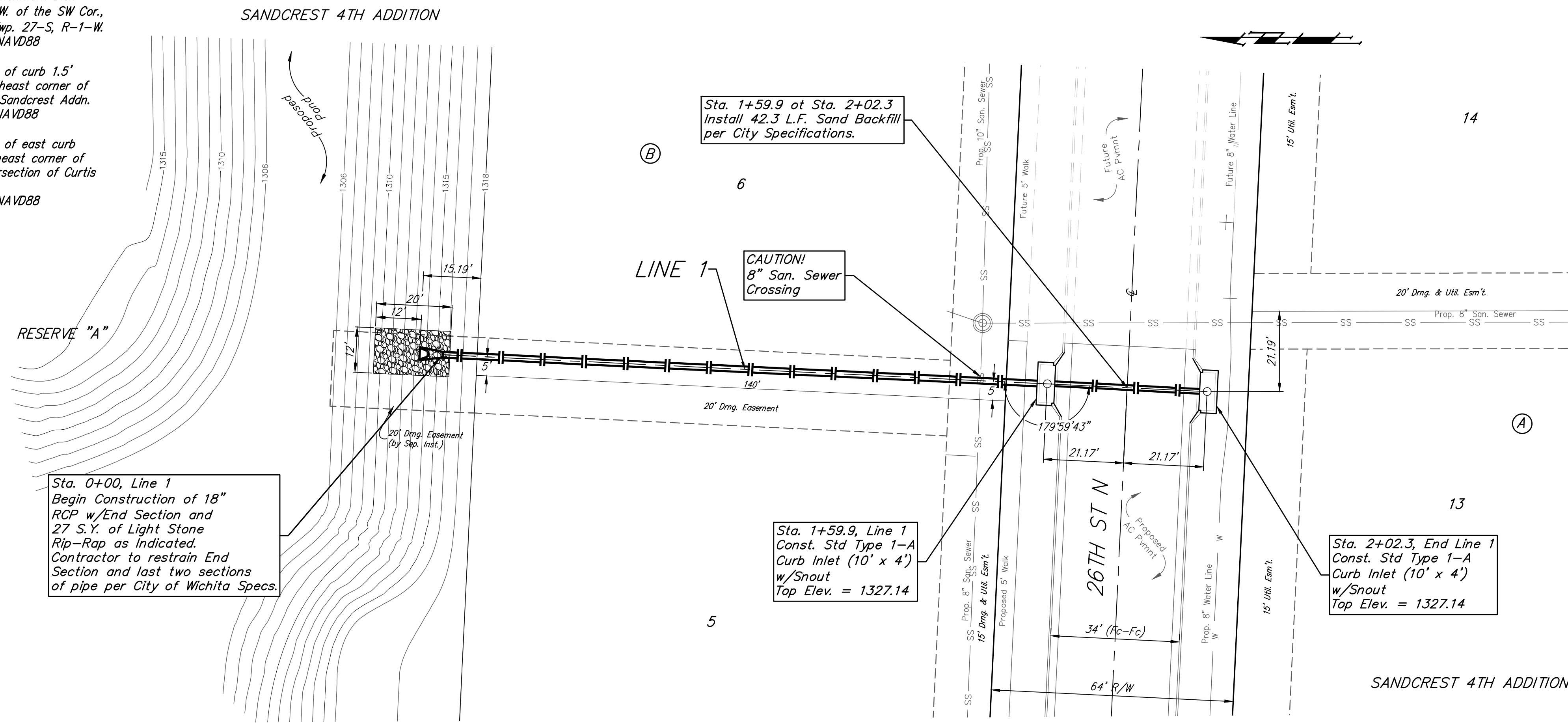


BENCHMARKS:
 City of Wichita Benchmark Disk
 34.9' S. & 31.2' W. of the SW Cor.,
 NW1/4, Sec. 2, Twp. 27-S, R-1-W.
 Elev. = 1327.57 NAVD88

"□" cut in top of curb 1.5'
 north of the northeast corner of
 Lot 20, Block B, Sandcrest Addn.
 Elev. = 1327.21 NAVD88

"□" cut in top of east curb
 inlet at the southeast corner of
 the southern intersection of Curtis
 & Sandcrest.
 Elev. = 1322.05 NAVD88



Baughman Sandcrest 3rd & 4th Addition
LINE 1 & LINE 9
 Storm Water Drain #438

Baughman Company, P.A. 315 Ellis St. Wichita, KS 67211 P 316-262-7271 F 316-262-0149
 ENGINEERING | SURVEYING | PLANNING | LANDSCAPE ARCHITECTURE

PROJECT NUMBER: 468
 DESIGN: AEG
 DRAWN: JAK
 APPROVED: [Signature]
 DATE: 2/19/19

SCALE: Noted
 SHEET: 2 OF 21

C:\Projects\Sandcrest 4th Addition_1801-P351\Engineering\SWD_1804-E965\SWS Plans.dwg