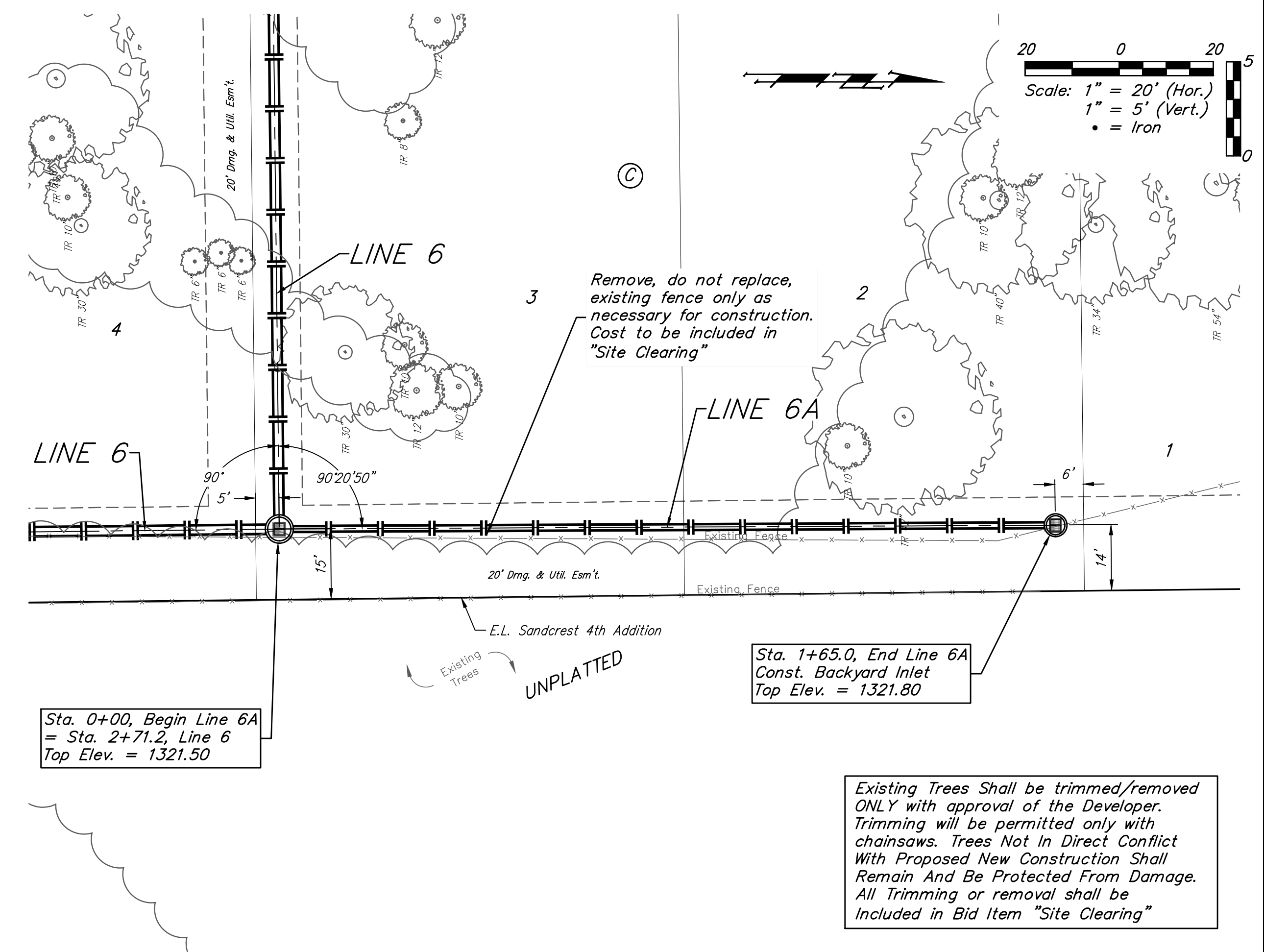
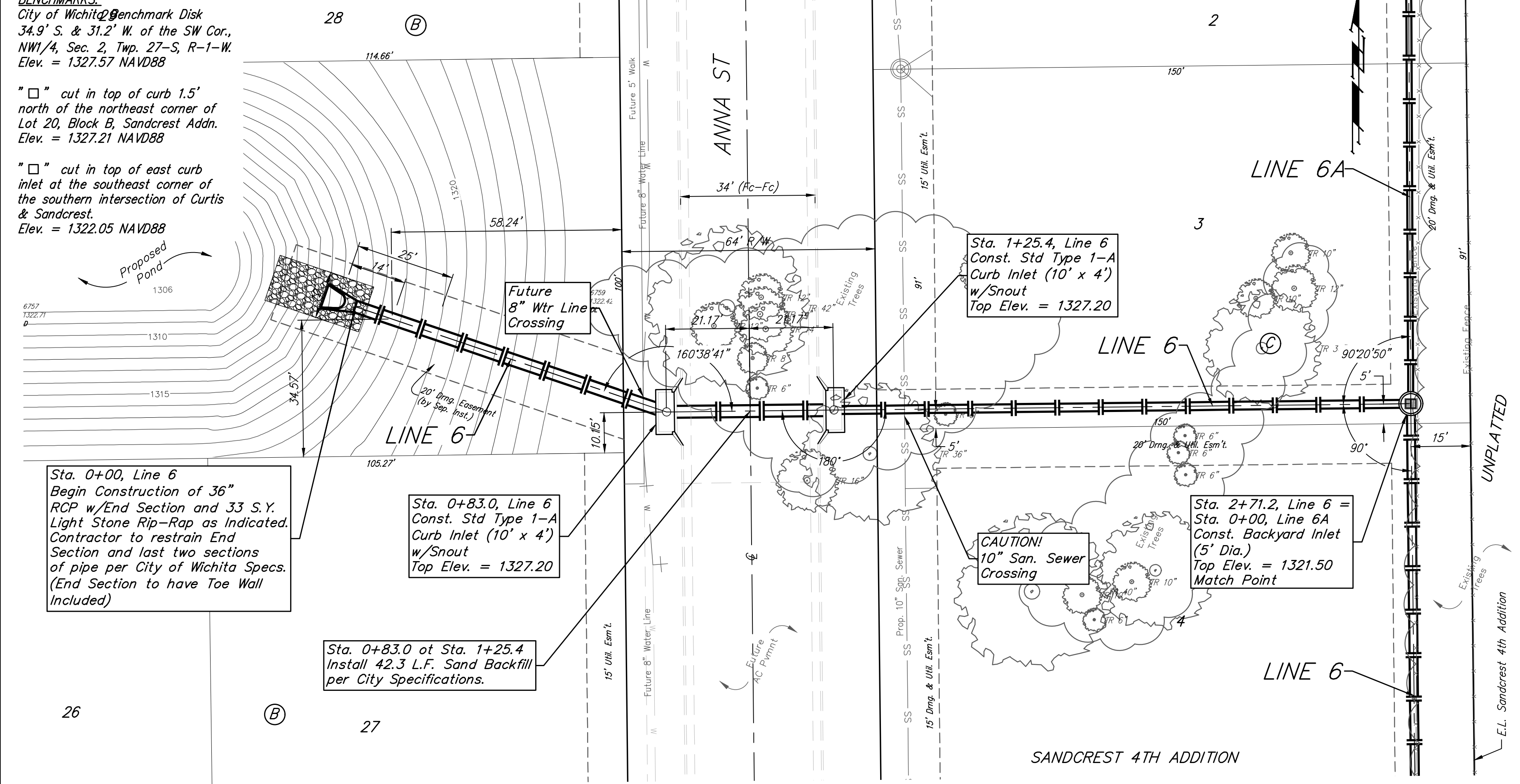


SANDCREST 4TH ADDITION

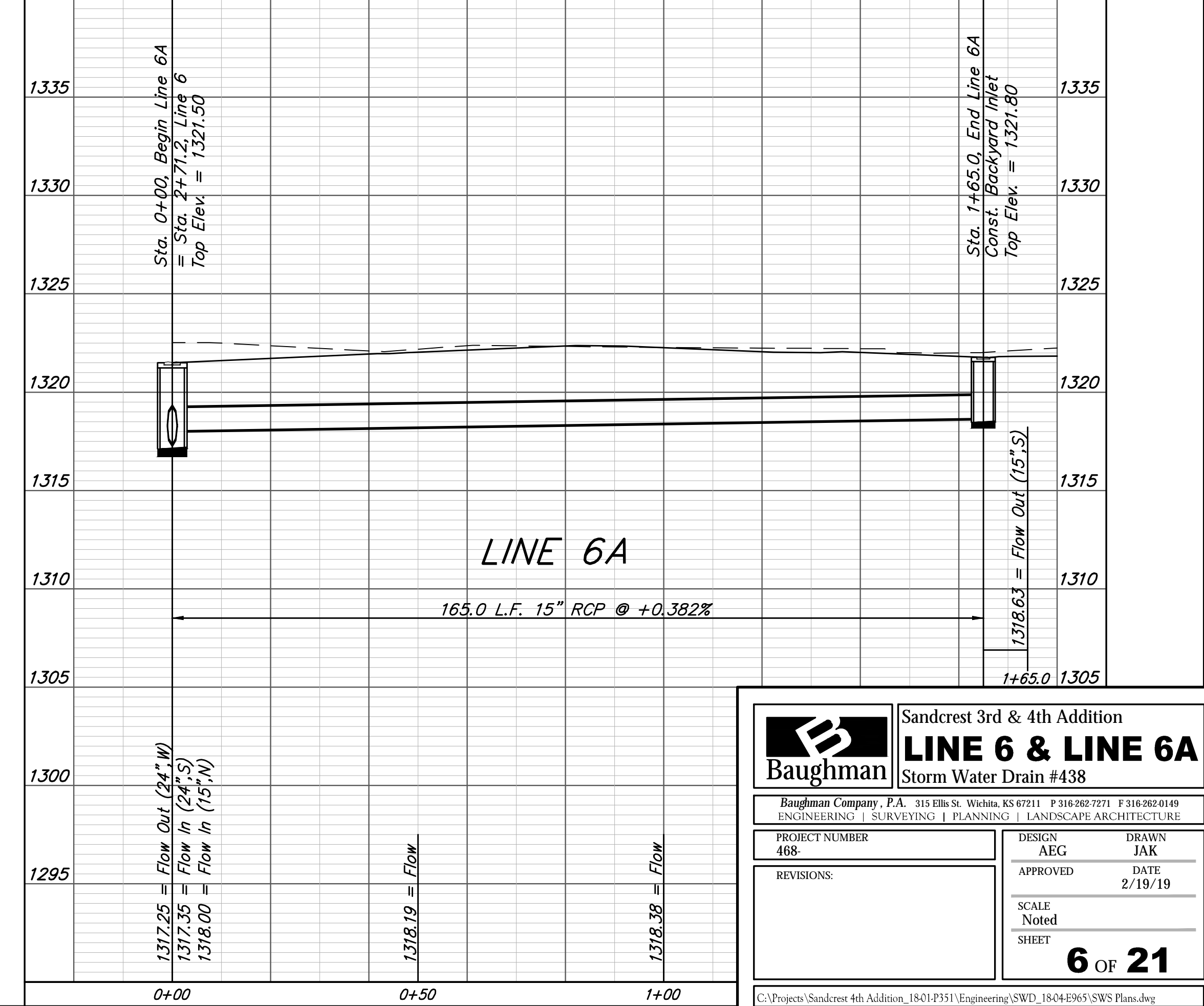
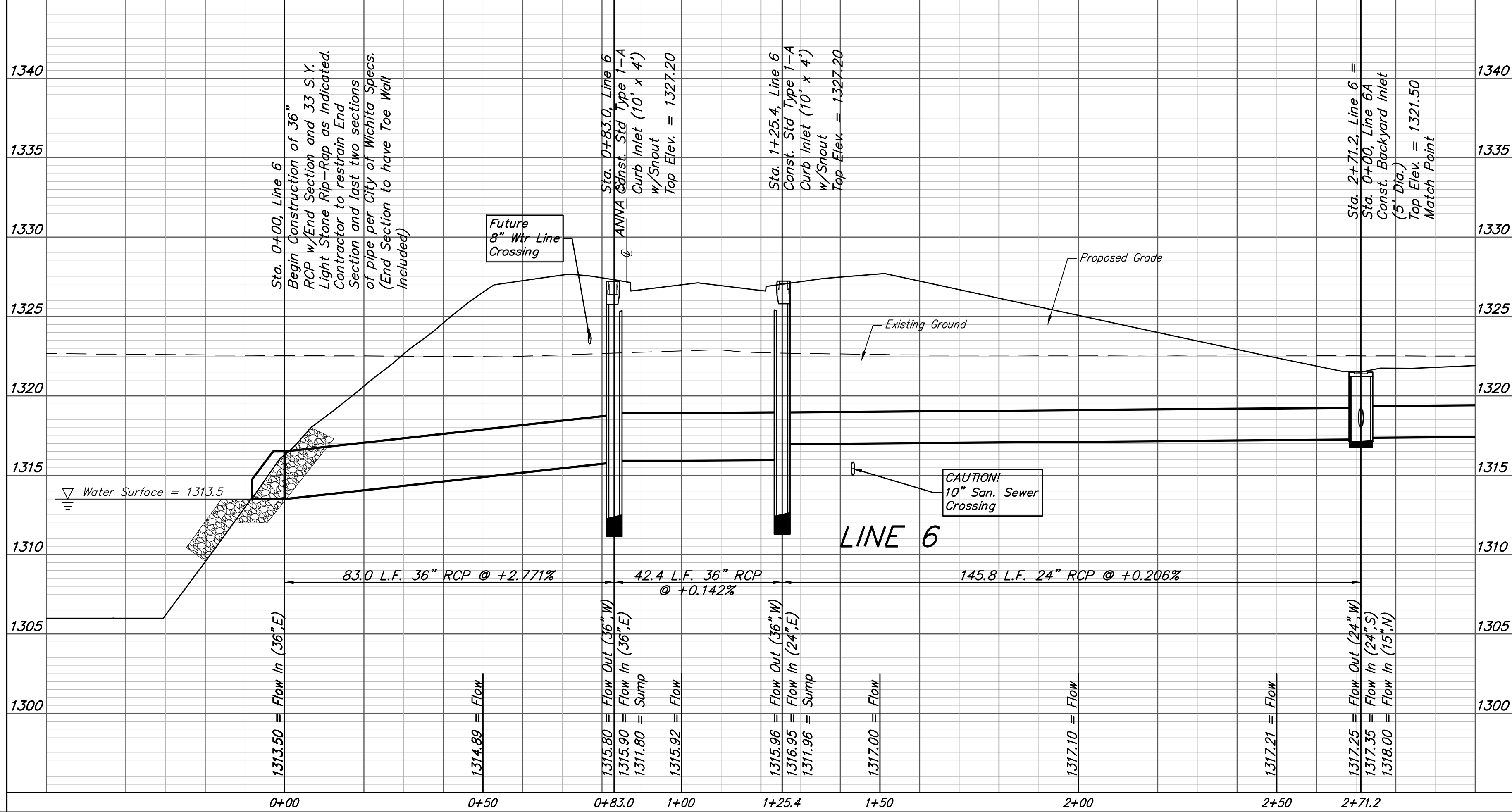
**BENCHMARKS:**  
 City of Wichita Benchmark Disk  
 34.9' S. & 31.2' W. of the SW Cor.,  
 NW1/4, Sec. 2, Twp. 27-S, R-1-W.  
 Elev. = 1327.57 NAVD88

"□" cut in top of curb 1.5'  
 north of the northeast corner of  
 Lot 20, Block B, Sandcrest Addn.  
 Elev. = 1327.21 NAVD88

"□" cut in top of east curb  
 inlet at the southeast corner of  
 the southern intersection of Curtis  
 & Sandcrest.  
 Elev. = 1322.05 NAVD88



Existing Trees Shall be trimmed/removed ONLY with approval of the Developer. Trimming will be permitted only with chainsaws. Trees Not In Direct Conflict With Proposed New Construction Shall Remain And Be Protected From Damage. All Trimming or removal shall be Included in Bid Item "Site Clearing"



		Sandcrest 3rd & 4th Addition <b>LINE 6 &amp; LINE 6A</b> Storm Water Drain #438	
Baughman Company, P.A. 315 Ellis St. Wichita, KS 67211 P 316-262-7271 F 316-262-0149 ENGINEERING   SURVEYING   PLANNING   LANDSCAPE ARCHITECTURE			
PROJECT NUMBER 468	DESIGN AEG	DRAWN JAK	DATE 2/19/19
REVISIONS:	APPROVED	SCALE Noted	SHEET <b>6 OF 21</b>