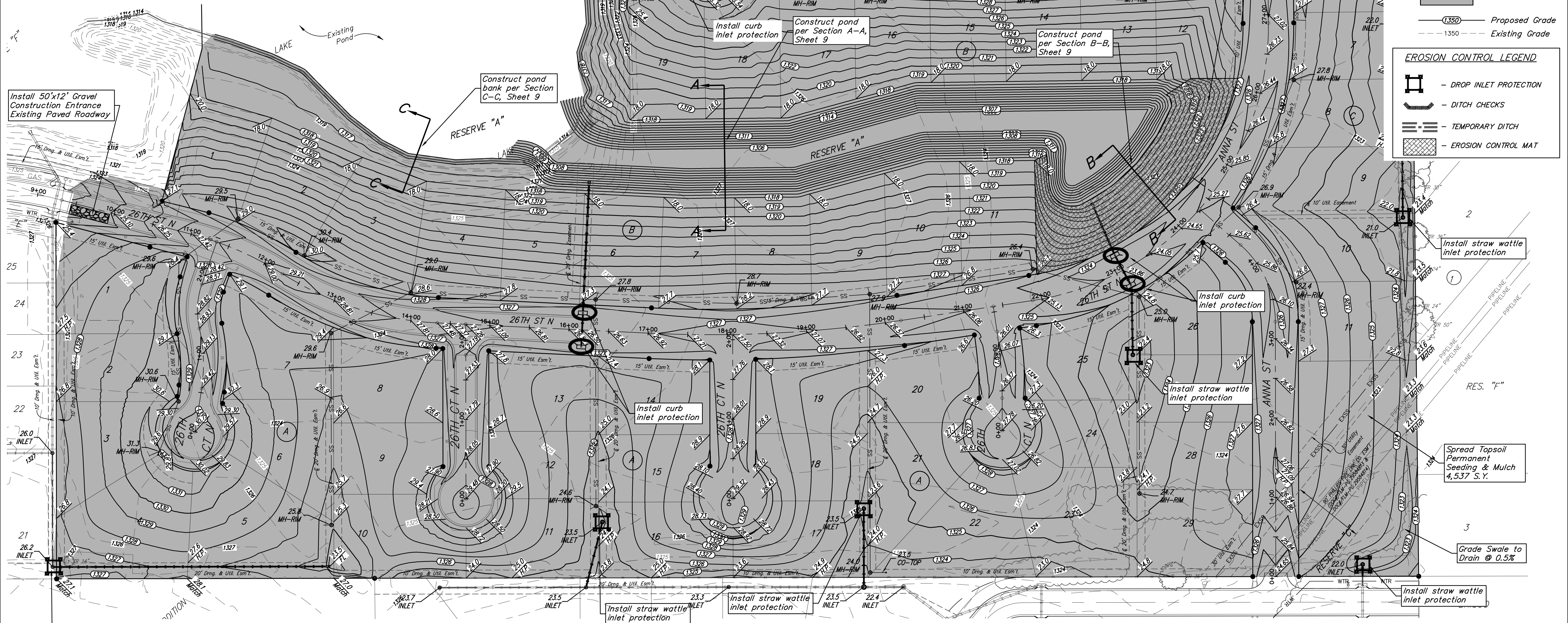
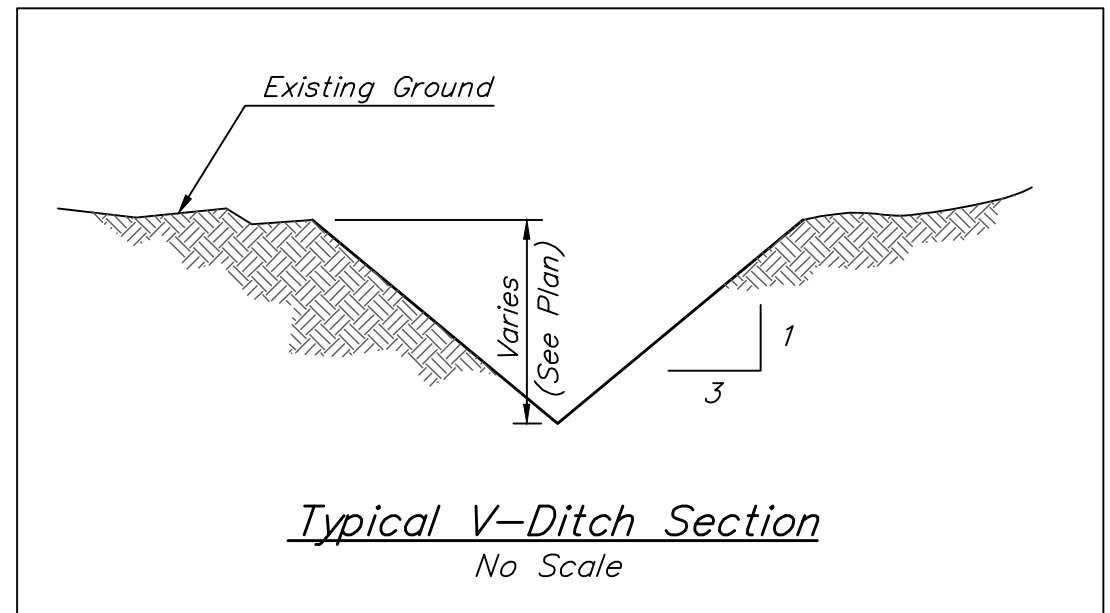


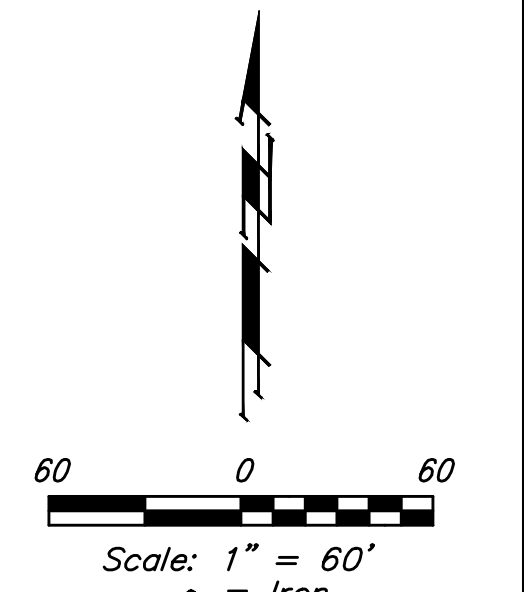
**BENCHMARKS:**  
 City of Wichita Benchmark Disk  
 34.9' S. & 31.2' W. of the SW Cor.,  
 NW1/4, Sec. 2, Twp. 27-S, R-1-W.  
 Elev. = 1327.57 NAVD88

"X" cut in top of curb inlet face  
 north side of 26th ST N.  
 129' west & 21' north of the  
 southwest corner of Lot 1, Block B,  
 Sandcrest 4th Addn.  
 Elev. = 1324.00 NAVD88

"□" cut in top of curb adjacent to  
 the southwest corner of Lot 4,  
 Block C, Sandcrest 3rd Addn.  
 Elev. = 1328.86 NAVD88



Spread Topsoil  
 Permanent  
 Seeding & Erosion  
 Control Mat.  
 2,600 S.Y.



Area to be graded  
 (1350) Proposed Grade  
 - - - 1350 Existing Grade

**EROSION CONTROL LEGEND**

- DROP INLET PROTECTION
- DITCH CHECKS
- TEMPORARY DITCH
- EROSION CONTROL MAT

From the time the original topography for this project was obtained, the following changes to the site have occurred. These notes and locations are for the purpose of helping Contractors identify additional work that is required and may not include all dirt and/or debris piles in the work area.

- The slopes of the sand pit have been excavated to an approximate 3:1 slope above the water surface in the rear yards of Lots 1-5, Blk B; side yards of Lots 19-20, Blk B; and rear yards of Lots 35-46, Blk B.
- Sand has been excavated from the two proposed lake fingers in Res "A" in the south sides of the Anna Ct. lots. The sand was used to backfill the sanitary sewer project. Trench material from the sewer trench remains on the project over the sanitary sewer pipe locations.
- Approximately 100 loads of dirt was imported and placed in piles in the rear yards of Lots 5-10, Blk C.
- Approximately 75 loads of dirt was imported and placed in piles in Lots 3-5 and 8-9, Blk B.
- Various piles of dirt have been placed on Lots and in street R/W on the northerly Anna Ct.
- Excess excavation from a previous phase of development was placed and spread on Lots 1-7, Blk A.

Construction work in the pipeline easement in Reserve "C", Anna St., and Lot 29, Blk A shall require pipeline coordination. Please see notes below.

- The Contractor shall contact Gordon Stands with Phillips 66 Pipeline, LLC at 316-821-2254 and Robert Clover with KPC Pipeline, LLC at 913-522-7501 a minimum of two weeks prior to construction.
- No excavation will be allowed over the existing pipelines.
- The only vehicle/equipment crossing of the pipeline easement shall be at locations approved by the pipeline representatives.
- Contractor shall install 5' of cover for temporary dirt crossings.
- Lightweight construction equipment may be required for grading within the pipeline easement.
- Contact pipeline representatives any time construction will occur within the pipeline easement.
- No vibratory equipment shall be used within pipeline easement.
- The plastic pipes laying on the ground in the south part of Reserve "C" shall be removed from the site. Cost to be included in the "Site Clearing" bid item.

**Baughman** Sandcrest 4th Addition  
**MASS GRADING & EROSION CONTROL**  
 Storm Water Drain #438

Baughman Company, P.A. 315 Ellis St. Wichita, KS 67211 P 316-262-7271 F 316-262-0149  
 ENGINEERING | SURVEYING | PLANNING | LANDSCAPE ARCHITECTURE

PROJECT NUMBER: 468-85327  
 DESIGN: AEG  
 DRAWN: JAK  
 APPROVED: [Signature]  
 DATE: 2/19/19  
 SCALE: Noted  
 SHEET: 9 OF 21

REVISIONS: