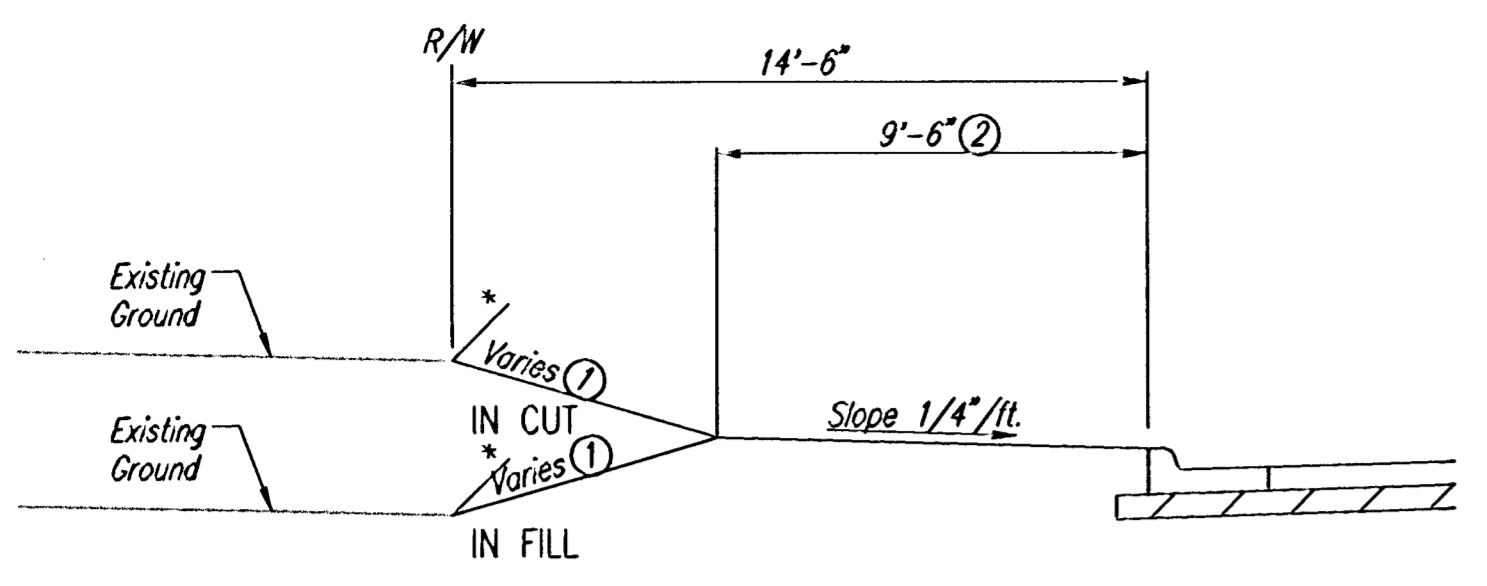


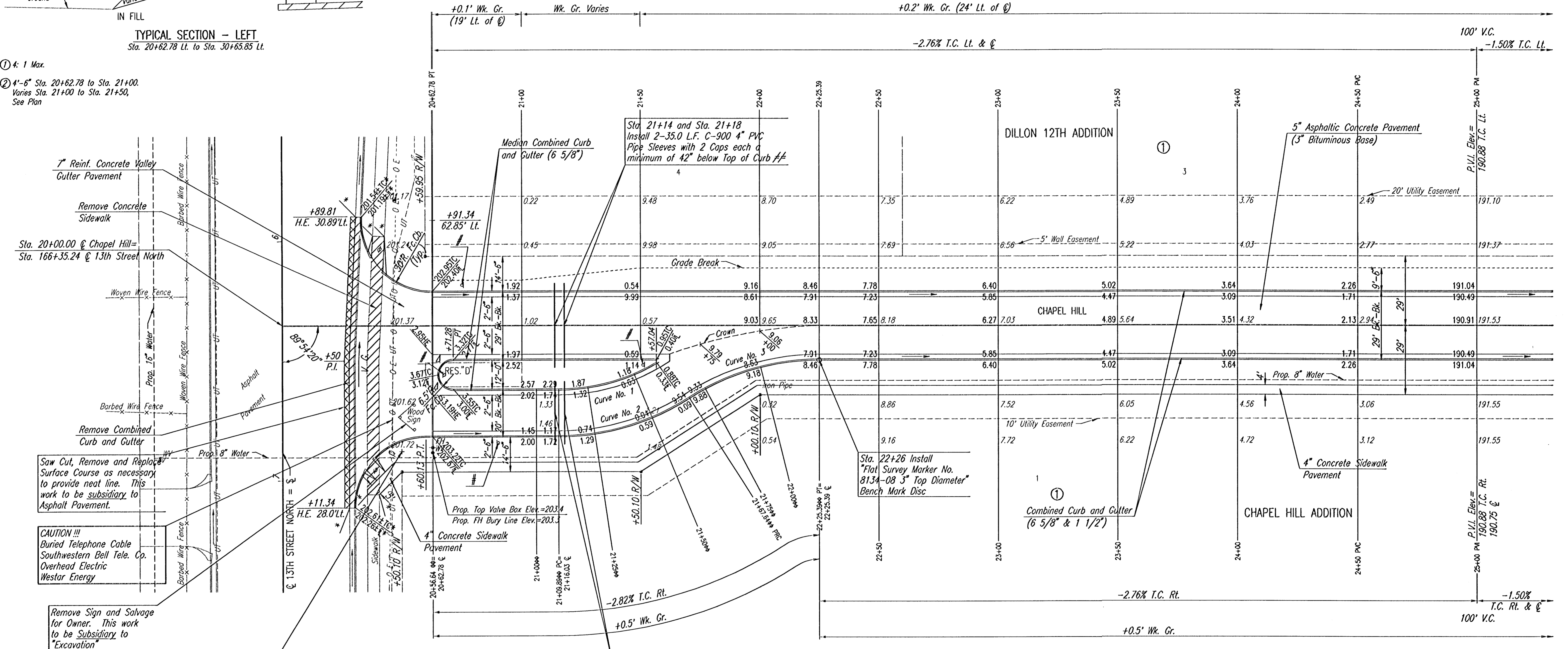
WATER VALVE BOX ELEVATIONS			
STREET	STATION	OFFSET	PROPOSED ELEVATION
CHAPEL HILL	20+62.78	53.0' RL	203.4

SCALE: 1"=20'



TYPICAL SECTION - LEFT
Sta. 20+62.78 Lt. to Sta. 30+65.85 Lt.

- ① 4' Max.
- ② 4'-6" Sta. 20+62.78 to Sta. 21+00. Varies Sta. 21+00 to Sta. 21+50, See Plan



7" Reinf. Concrete Valley Gutter Pavement
Remove Concrete Sidewalk
Sta. 20+00.00 @ Chapel Hill =
Sta. 166+35.24 @ 13th Street North
Woven Wire Fence
Prop. 10" Water
Barbed Wire Fence
Remove Combined Curb and Gutter
Saw Cut, Remove and Replace Surface Course as necessary to provide neat line. This work to be subsidiary to Asphalt Pavement.
CAUTION!!! Buried Telephone Cable Southwestern Bell Tele. Co. Overhead Electric Westar Energy
Remove Sign and Salvage for Owner. This work to be Subsidiary to "Excavation"

Sta. 20+50, 52.5' Rt. Install Street Name Sign (13th St N 11800 E/Chapel Hill 1400 N) See Sh. No. 36

Sta. 21+14 and Sta. 21+18, 36.5' Rt. Install 2-26.0 L.F. C-900 4" PVC Pipe Sleeves with 2 Caps each a minimum of 42" below Top of Curb #/

Sta. 22+26 Install "Flat Survey Marker No. 813A-08 3" Top Diameter" Bench Mark Disc

CURVE NO. 2 STAKING DATA						
CURVE DATA BASED ON RADIUS TO 8' BEHIND FACE OF CURB						
FACE CURB STATION	ARC LENGTH ALONG FACE CURB	ARC LENGTH ALONG 8' OFFSET	CHD LENGTH 8' OFF FC. OF CB.	DEFLECTION ANGLE	TOTAL DEFLECTION	REMARKS
21+09.89	15.11'	16.31'	18.29'	0°00'00"	0°00'00"	P.C.
21+25	25.00'	26.97'	28.90'	4°16'02"	4°16'02"	
21+50	17.64'	19.03'	19.01'	4°58'55"	16°18'34.5"	P.T.

CURVE NO. 3 STAKING DATA						
CURVE DATA BASED ON RADIUS TO 8' BEHIND FACE OF CURB						
FACE CURB STATION	ARC LENGTH ALONG FACE CURB	ARC LENGTH ALONG 8' OFFSET	CHD LENGTH 8' OFF FC. OF CB.	DEFLECTION ANGLE	TOTAL DEFLECTION	REMARKS
21+67.64	7.36'	8.78'	6.78'	2°04'43"	2°04'43"	P.R.C.
21+75	25.00'	23.03'	22.97'	7°03'38"	9°08'20"	
22+00	19.01'	23.39'	23.33'	7°10'14"	16°18'34.5"	P.T.

Curve Data Curve No. 1 (Face of Curb)
Δ=29°49'49"
D=89°30'00"
R=82.44'
L=42.92'
T=21.96'
E=2.87'

Curve Data Curve Nos. 2 & 3 (Face of Curb)
Δ=32°37'09"
D=56°28'57"
R=101.44'
L=57.75'
T=29.68'
E=4.25'

Δ WIDENED GUTTER SECTION WILL NOT BE PAID FOR DIRECTLY, AND THIS COST SHALL BE CONSIDERED SUBSIDIARY TO "MEDIAN COMBINED CURB AND GUTTER(6 5/8)".

- * MATCH EXISTING
- ♦ CONST. STD. WHEELCHAIR RAMP
- ♦♦ RIGHT FACE OF CURB STATION
- # SEE SH. NO. 36 FOR SIGNING NOTES AND DETAILS
- ## EACH END OF 4" PVC PIPE SLEEVE SHALL BE MARKED WITH STEEL "I" POSTS OR 2" STEEL PIPE A MAXIMUM OF 12" ABOVE GRADE. PIPE, CAPS, PIPE INSTALLATION AND MARKERS SHALL BE SUBSIDIARY TO "COMBINED CURB AND GUTTER (6 5/8' & 1 1/2)".

CHAPEL HILL ADDITION

CHAPEL HILL
STA. 20+00.00 TO STA. 25+00.00

Professional Engineering Consultants, P.A.
303 S. TOPEKA • WICHITA, KANSAS 67202
316-262-2691 • FAX 316-262-3003

Designed by BER, GDD
Checked by
Drawn by DEP, SAD
Date JANUARY, 2001
Job No. 99127

DSNR: GOD OPER: DEP SCALE: 1"=20.00
Q:\1999\99127\000\STR20-25 06-12-2002 08:42:13 am