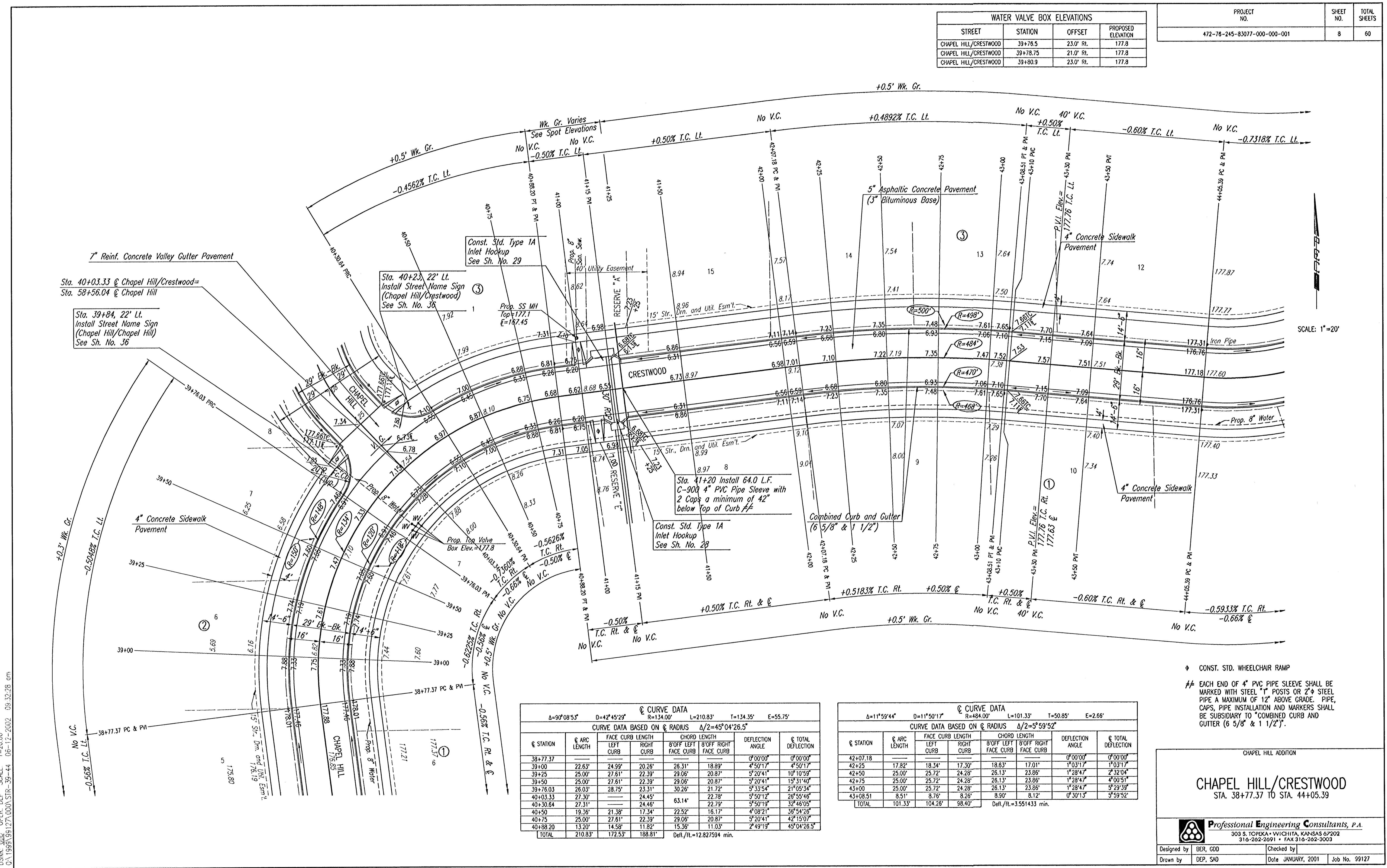


WATER VALVE BOX ELEVATIONS			
STREET	STATION	OFFSET	PROPOSED ELEVATION
CHAPEL HILL/CRESTWOOD	39+76.5	23.0' RL	177.8
CHAPEL HILL/CRESTWOOD	39+78.75	21.0' RL	177.8
CHAPEL HILL/CRESTWOOD	39+80.9	23.0' RL	177.8

PROJECT NO.	SHEET NO.	TOTAL SHEETS
472-76-245-83077-000-001	8	60



DSNR: GDD OPER: DEP SCALE: 1"=20.00  
 01/19/99 09:12:00 STR: 39-44 06-12-2002 09:32:28 am

CURVE DATA						
Δ=90°08'53" D=42°45'29" R=134.00' L=210.83' T=134.35' E=55.75'						
CURVE DATA BASED ON C RADIUS Δ/2=45°04'26.5"						
STATION	ARC LENGTH	FACE CURB LENGTH	CHORD LENGTH	DEFLECTION ANGLE	TOTAL DEFLECTION	
		LEFT CURB	RIGHT CURB	8' OFF LEFT FACE CURB	8' OFF RIGHT FACE CURB	
38+77.37				0°00'00"	0°00'00"	
39+00	22.63'	24.99'	20.26'	18.89'	4°50'17"	4°50'17"
39+25	25.00'	27.61'	22.39'	29.06'	5°20'41"	10°10'59"
39+50	25.00'	27.61'	22.39'	29.06'	5°20'41"	15°31'40"
39+76.03	26.03'	28.75'	23.31'	30.26'	21.72'	5°33'54"
40+03.33	27.30'		24.45'	63.14'	22.79'	5°50'19"
40+30.64	27.31'		24.45'		22.79'	32°46'05"
40+50	19.36'	21.38'	17.34'	22.52'	18.17'	4°08'21"
40+75	25.00'	27.61'	22.39'	29.06'	20.87'	5°20'41"
40+88.20	13.20'	14.58'	11.82'	15.36'	11.03'	2°49'19"
TOTAL	210.83'	172.53'	188.81'			Def./ft.=12.827594 min.

CURVE DATA						
Δ=11°59'44" D=11°50'17" R=484.00' L=101.33' T=50.85' E=2.66'						
CURVE DATA BASED ON C RADIUS Δ/2=5°59'52"						
STATION	ARC LENGTH	FACE CURB LENGTH	CHORD LENGTH	DEFLECTION ANGLE	TOTAL DEFLECTION	
		LEFT CURB	RIGHT CURB	8' OFF LEFT FACE CURB	8' OFF RIGHT FACE CURB	
42+07.18				0°00'00"	0°00'00"	
42+25	17.82'	18.34'	17.30'	18.63'	17.01'	1°03'17"
42+50	25.00'	25.72'	24.28'	26.13'	23.86'	1°28'47"
42+75	25.00'	25.72'	24.28'	26.13'	23.86'	1°28'47"
43+00	25.00'	25.72'	24.28'	26.13'	23.86'	1°28'47"
43+08.51	8.51'	8.76'	8.28'	8.90'	8.12'	0°30'13"
TOTAL	101.33'	104.26'	98.40'			Def./ft.=3.551433 min.

- ◆ CONST. STD. WHEELCHAIR RAMP
- ## EACH END OF 4" PVC PIPE SLEEVE SHALL BE MARKED WITH STEEL "I" POSTS OR 2" STEEL PIPE A MAXIMUM OF 12" ABOVE GRADE. PIPE, CAPS, PIPE INSTALLATION AND MARKERS SHALL BE SUBSIDIARY TO "COMBINED CURB AND GUTTER (6 5/8" & 1 1/2)".

CHAPEL HILL ADDITION

## CHAPEL HILL/CRESTWOOD

STA. 38+77.37 TO STA. 44+05.39

Professional Engineering Consultants, P.A.

303 S. TOPKA • WICHITA, KANSAS 67202  
316-262-2691 • FAX 316-262-3003

Designed by	BER, GDD	Checked by	
Drawn by	DEP, SAD	Date	JANUARY, 2001
		Job No.	99127