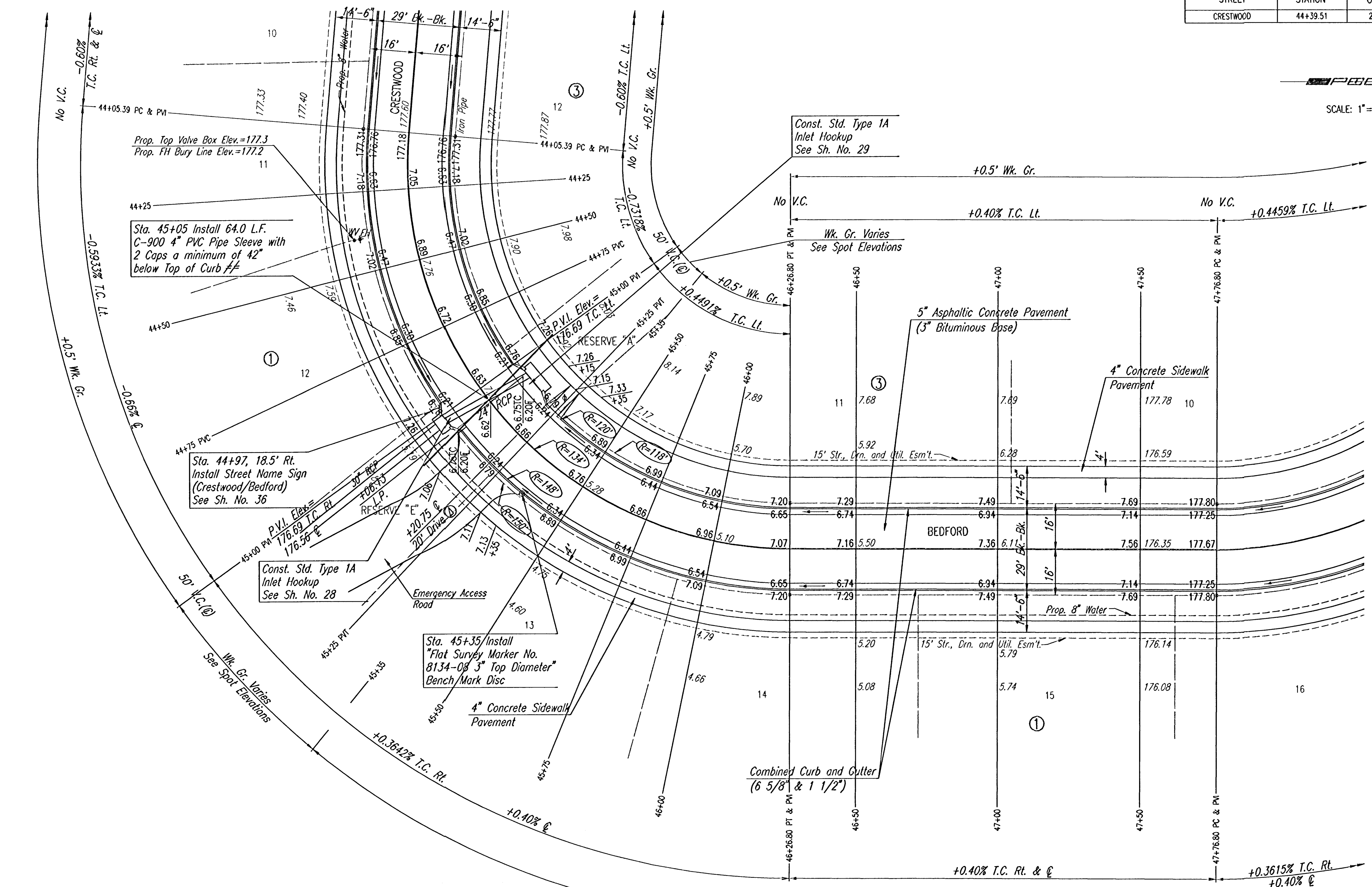


WATER VALVE BOX ELEVATIONS			
STREET	STATION	OFFSET	PROPOSED ELEVATION
CRESTWOOD	44+39.51	21.0' RL	177.3

SCALE: 1"=20'



Q CURVE DATA
 $\Delta=94^{\circ}40'13''$ $D=42^{\circ}45'29''$ $R=134.00'$ $221.41'$ $T=145.39'$ $E=63.73'$

CURVE DATA BASED ON Q RADIUS $\Delta/2=47^{\circ}20'06.5''$

STATION	ARC LENGTH	FACE CURB LENGTH		CHORD LENGTH		DEFLECTION ANGLE	TOTAL DEFLECTION
		LEFT CURB	RIGHT CURB	8' OFF LEFT FACE CURB	8' OFF RIGHT FACE CURB		
44+05.39						0°00'00"	0°00'00"
44+25	19.61'	17.55'	21.67'	16.38'	22.81'	4°11'33"	4°11'33"
44+50	25.00'	22.39'	27.61'	20.87'	29.06'	5°20'41"	9°32'14"
44+75	25.00'	22.39'	27.61'	20.87'	29.06'	5°20'41"	14°52'55"
45+00	25.00'	22.39'	27.61'	20.87'	29.06'	5°20'41"	20°13'36"
45+25	25.00'	22.39'	27.61'	20.87'	29.06'	5°20'41"	25°34'17"
45+50	25.00'	22.39'	27.61'	20.87'	29.06'	5°20'41"	30°54'58"
45+75	25.00'	22.39'	27.61'	20.87'	29.06'	5°20'41"	36°15'39"
46+00	25.00'	22.39'	27.61'	20.87'	29.06'	5°20'41"	41°36'20"
46+25	25.00'	22.39'	27.61'	20.87'	29.06'	5°20'41"	46°57'01"
46+26.80	1.80'	1.61'	1.99'	1.50'	2.09'	0°23'05"	47°20'06.5"
TOTAL	221.41'	198.28'	244.54'				

Dell./ft.=12.827372 min.

- Ⓐ CONST. RADIUS RAMP DRIVE, SEE SH. NO. 31
- ⚡ CONST. STD. WHEELCHAIR RAMP
- ≠≠ EACH END OF 4" PVC PIPE SLEEVE SHALL BE MARKED WITH STEEL "T" POSTS OR 2" STEEL PIPE A MAXIMUM OF 12" ABOVE GRADE. PIPE, CAPS, PIPE INSTALLATION AND MARKERS SHALL BE SUBSIDIARY TO "COMBINED CURB AND GUTTER (6 5/8" & 1 1/2)".

CHAPEL HILL ADDITION

CRESTWOOD/BEDFORD
 STA. 44+05.39 TO STA. 47+76.80

Professional Engineering Consultants, P.A.
 303 S. TOPEKA • WICHITA, KANSAS 67202
 316-262-2691 • FAX 316-262-3003

Designed by	BER, GDD	Checked by	
Drawn by	DEP	Date	JANUARY, 2001
		Job No.	99127

DSNR_GDD OFER: DEP SCALE: 1"=20.00
 0:\1999\99127\000\STR44-48_06-12-2002_09:33:44.dwg