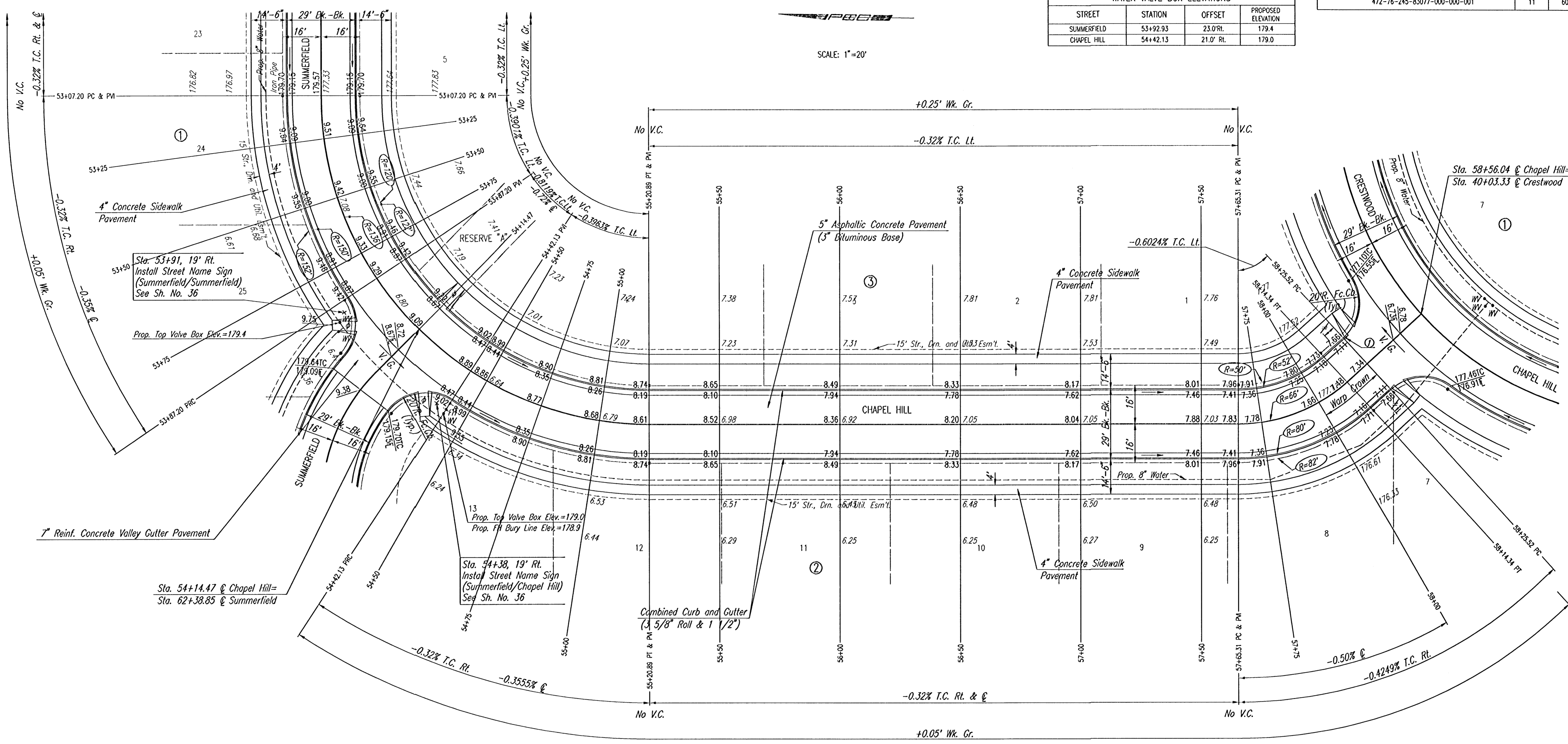


WATER VALVE BOX ELEVATIONS			
STREET	STATION	OFFSET	PROPOSED ELEVATION
SUMMERFIELD	53+92.93	23.0' RT.	179.4
CHAPEL HILL	54+42.13	21.0' RT.	179.0

SCALE: 1"=20'



⊙ CURVE DATA
 $\Delta=90^{\circ}01'45''$ $D=42^{\circ}07'45''$ $R=136.00'$ $L=213.69'$ $T=136.07'$ $E=56.38'$

CURVE DATA BASED ON ⊙ RADIUS $\Delta/2=45^{\circ}00'52.5''$

⊙ STATION	⊙ ARC LENGTH	FACE CURB LENGTH		CHORD LENGTH		DEFLECTION ANGLE	⊙ TOTAL DEFLECTION
		LEFT CURB	RIGHT CURB	8' OFF LEFT FACE CURB	8' OFF RIGHT FACE CURB		
53+07.20						0°00'00"	0°00'00"
53+25	17.80'	15.97'	19.63'	14.91'	20.67'	3°44'59"	3°44'59"
53+50	25.00'	22.43'	27.57'	20.93'	29.00'	5°15'59"	9°00'58"
53+75	25.00'	22.43'	27.57'	20.93'	29.00'	5°15'59"	14°16'56"
53+87.20	12.20'	10.94'	13.46'	10.22'	14.17'	2°34'12"	16°51'08"
54+14.47	27.27'	24.46'		22.82'		5°44'40"	22°35'49"
54+42.13	27.66'	24.81'		23.15'	63.38'	5°49'36"	28°25'25"
54+50	7.87'	7.06'	8.68'	6.60'	9.14'	1°39'28"	30°04'53"
54+75	25.00'	22.43'	27.57'	20.93'	29.00'	5°15'59"	35°20'52"
55+00	25.00'	22.43'	27.57'	20.93'	29.00'	5°15'59"	40°36'51"
55+20.89	20.89'	18.74'	23.04'	17.49'	24.25'	4°24'02"	45°00'52.5"
TOTAL	213.69'	191.70'	175.09'				

Defl./ft.=12.639220 min.

NOTE: THIS STREET TO BE CONSTRUCTED WITH ROLL-TYPE CURB. TOP OF CURB ELEVATIONS GIVEN ARE FOR FULL HEIGHT CURB.

⊙ CURVE DATA
 $\Delta=42^{\circ}33'29''$ $D=85^{\circ}48'42''$ $R=66.00'$ $L=49.03'$ $T=25.70'$ $E=4.83'$

CURVE DATA BASED ON ⊙ RADIUS $\Delta/2=21^{\circ}16'44.5''$

⊙ STATION	⊙ ARC LENGTH	FACE CURB LENGTH		CHORD LENGTH		DEFLECTION ANGLE	⊙ TOTAL DEFLECTION
		LEFT CURB	RIGHT CURB	8' OFF LEFT FACE CURB	8' OFF RIGHT FACE CURB		
57+65.31						0°00'00"	0°00'00"
57+75	9.69'	7.63'	11.74'	6.45'	12.91'	4°12'20"	4°12'20"
58+00	25.00'	19.70'	30.30'	16.56'	33.13'	10°51'00"	15°03'20"
58+14.34	14.34'	11.29'	17.38'	9.54'	19.08'	6°13'25"	21°16'44.5"
TOTAL	49.03'	38.62'	59.42'				

Defl./ft.=26.040010 min.

- ⊙ CONST. STD. WHEELCHAIR RAMP
- ≠ 5' TRANSITION FROM COMBINED CURB AND GUTTER (3 5/8" ROLL & 1 1/2") TO MONOLITHIC EDGE CURB (6 5/8"). TO BE BID AND PAID FOR AS "COMBINED CURB AND GUTTER (3 5/8" ROLL & 1 1/2").
- Ⓛ STA. 58+25 INSTALL "FLAT SURVEY MARKER NO. 8134-08 3" TOP DIAMETER" BENCH MARK DISC

CHAPEL HILL ADDITION

SUMMERFIELD/CHAPEL HILL
 STA. 53+07.20 TO STA. 58+56.04

Professional Engineering Consultants, P.A.
 303 S. TOPEKA • WICHITA, KANSAS 67202
 316-262-2691 • FAX 316-262-3003

Designed by	BER, GDD	Checked by	
Drawn by	DEP, SAD	Date	JANUARY, 2001
		Job No.	99127

DSNR_GDD OPER: DEP SCALE: 1"=20.00
 C:\1999\99127\000\STR63-58_06-12-2002_09:34:41 am