

SCALE: 1"=100'

B.M. - BENCH MARK DISC AT S.W. CORNER 13TH STREET NORTH AND GREENWICH ROAD.  
 ELEV.=1385.51 M.S.L.  
 ELEV.=198.11 CITY DATUM

MINIMUM PAD ELEVATIONS (LOWEST OPENING) AS FOLLOWS:

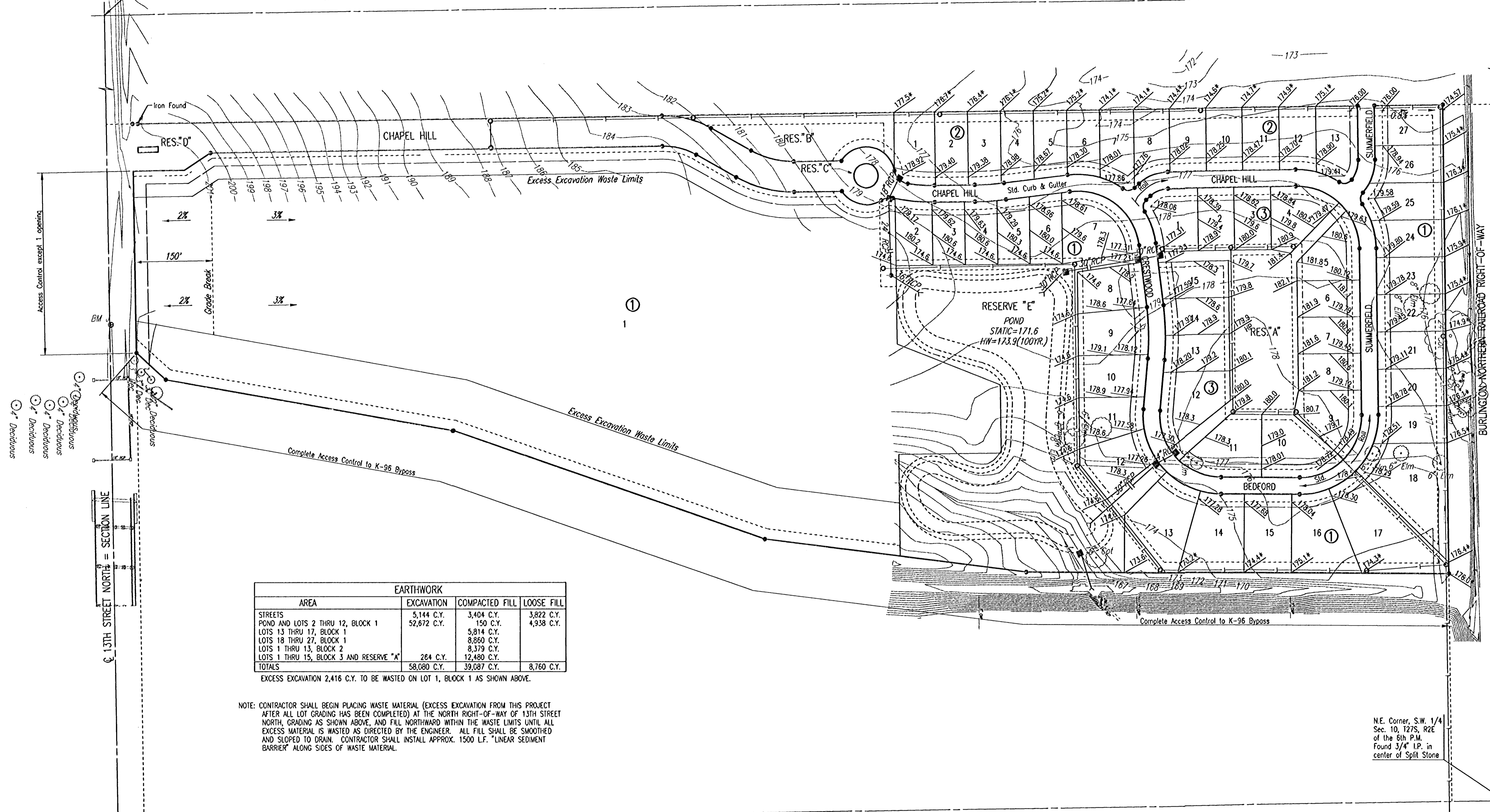
BLOCK 1  
 LOTS 1 THROUGH 13  
 ELEV = 175.60 CITY DATUM  
 ELEV = 1363.0 M.S.L.

B.M. - RAILROAD SPIKE IN EAST FACE OF POWER POLE AT N.E. CORNER 13TH STREET NORTH AND GREENWICH ROAD.  
 ELEV.=1383.61 M.S.L.  
 ELEV.=196.21 CITY DATUM

N.W. Corner, S.W. 1/4 Sec. 10, T27S, R2E of the 6th P.M. Found R.R. Spike in Pavt.

S.W. Corner, S.W. 1/4 Sec. 10, T27S, R2E of the 6th P.M. Found 3/4" I.P.

MINIMUM OPENINGS:  
 BLOCK 3  
 LOTS 1 THROUGH 15 ELEV = 178.50 CITY DATUM  
 ELEV = 1365.9 M.S.L.



EARTHWORK			
AREA	EXCAVATION	COMPACTED FILL	LOOSE FILL
STREETS	5,144 C.Y.	3,404 C.Y.	3,822 C.Y.
POND AND LOTS 2 THRU 12, BLOCK 1	52,672 C.Y.	150 C.Y.	4,938 C.Y.
LOTS 13 THRU 17, BLOCK 1		5,814 C.Y.	
LOTS 18 THRU 27, BLOCK 1		8,860 C.Y.	
LOTS 1 THRU 13, BLOCK 2		8,379 C.Y.	
LOTS 1 THRU 15, BLOCK 3 AND RESERVE "A"	264 C.Y.	12,480 C.Y.	
TOTALS	58,080 C.Y.	39,087 C.Y.	8,760 C.Y.

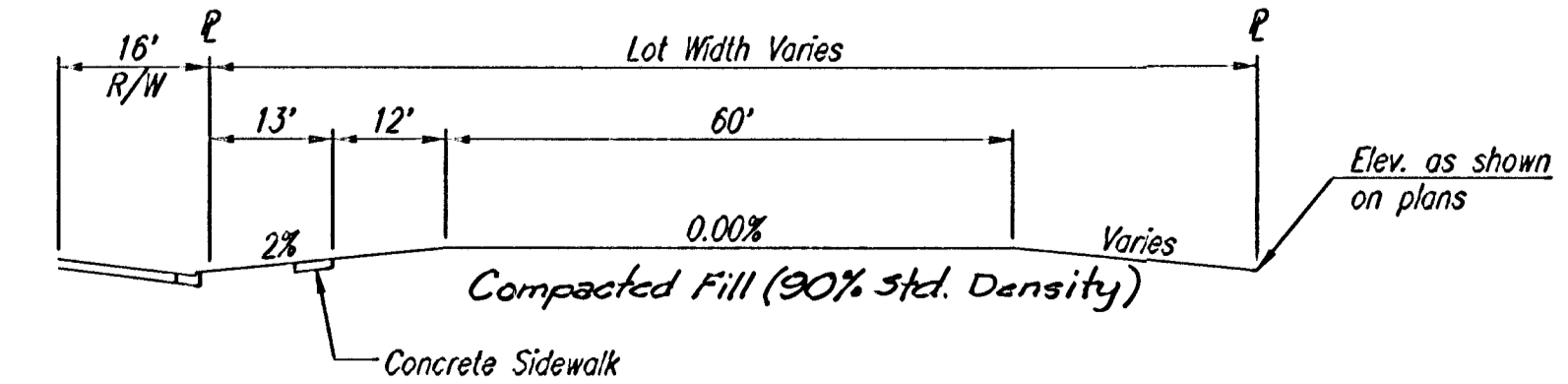
EXCESS EXCAVATION 2,416 C.Y. TO BE WASTED ON LOT 1, BLOCK 1 AS SHOWN ABOVE.

NOTE: CONTRACTOR SHALL BEGIN PLACING WASTE MATERIAL (EXCESS EXCAVATION FROM THIS PROJECT AFTER ALL LOT GRADING HAS BEEN COMPLETED) AT THE NORTH RIGHT-OF-WAY OF 13TH STREET NORTH, GRADING AS SHOWN ABOVE, AND FILL NORTHWARD WITHIN THE WASTE LIMITS UNTIL ALL EXCESS MATERIAL IS WASTED AS DIRECTED BY THE ENGINEER. ALL FILL SHALL BE SMOOTHED AND SLOPED TO DRAIN. CONTRACTOR SHALL INSTALL APPROX. 1500 L.F. "LINEAR SEDIMENT BARRIER" ALONG SIDES OF WASTE MATERIAL.

S.E. Corner, S.W. 1/4 Sec. 10, T27S, R2E of the 6th P.M. Found Lead Plug

N.E. Corner, S.W. 1/4 Sec. 10, T27S, R2E of the 6th P.M. Found 3/4" I.P. in center of Split Stone

SEE SHEET NOS. 18 AND 22 FOR ADDITIONAL LOT GRADING DETAILS.



TYPICAL LOT GRADING SECTION  
 (LOTS 1 THRU 13, BLOCK 2 AND LOTS 13 THRU 27, BLOCK 1)

NOTE: CONTRACTOR SHALL DEVIATE FROM THE ABOVE TYPICAL SECTION WHERE NECESSARY TO MATCH SIDE YARD DRAINAGE SYSTEMS AS SHOWN ON OTHER SHEETS IN THESE PLANS AND AS DIRECTED BY THE ENGINEER.

CHAPEL HILL ADDITION  
**FOUR CORNER GRADING PLAN**

Professional Engineering Consultants, P.A.  
 303 S. TOPEKA - WICHITA, KANSAS 67202  
 316-262-2691 • FAX 316-262-3003

Designed by GDD  
 Drawn by DEP  
 Checked by  
 Date JANUARY, 2001  
 Job No. 99127

DSNR: GDD OPER: DEP SCALE: 1"=100.00  
 Q:\1999\99127\000\corner 06-12-2002 08:30:20 am