

| | | |
|------------------------------|-----------|--------------|
| PROJECT NO. | SHEET NO. | TOTAL SHEETS |
| 472-76-245-83077-000-000-001 | 21 | 60 |

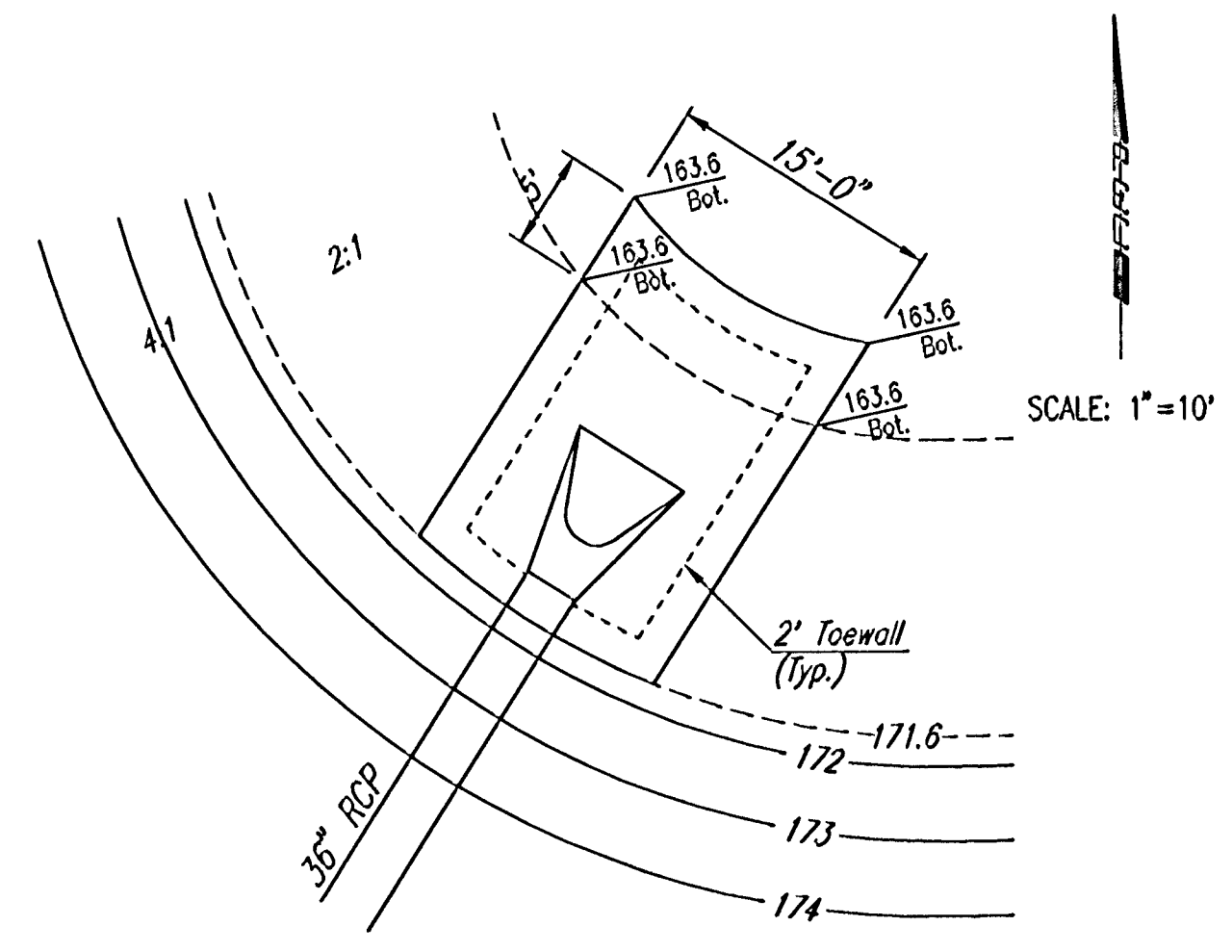
POND SEALING NOTES:

THE POND AREAS SHALL BE OVEREXCAVATED TO A DEPTH OF ONE FOOT BELOW THE FINAL POND FLOOR. THE OVEREXCAVATED MATERIAL SHALL BE STOCKPILED FOR RE-USE, UTILIZED IN PROJECT EMBANKMENTS, OR WASTED ON SITE. OVEREXCAVATED AREAS TO RECEIVE FOUNDATION TREATMENT IN ACCORDANCE WITH SECTION 210.02 (B) OF THE SPECIFICATIONS. BACKFILL OVEREXCAVATED AREA WITH PROJECT AREA CLAY MATERIAL AND COMPACT TO TYPE B (MR-0) IN MAXIMUM 6-INCH LIFTS. NO SHALE PERMITTED IN THIS ZONE. SEE DETAIL FOR CLAY LINER (SEAL) AT RIGHT.

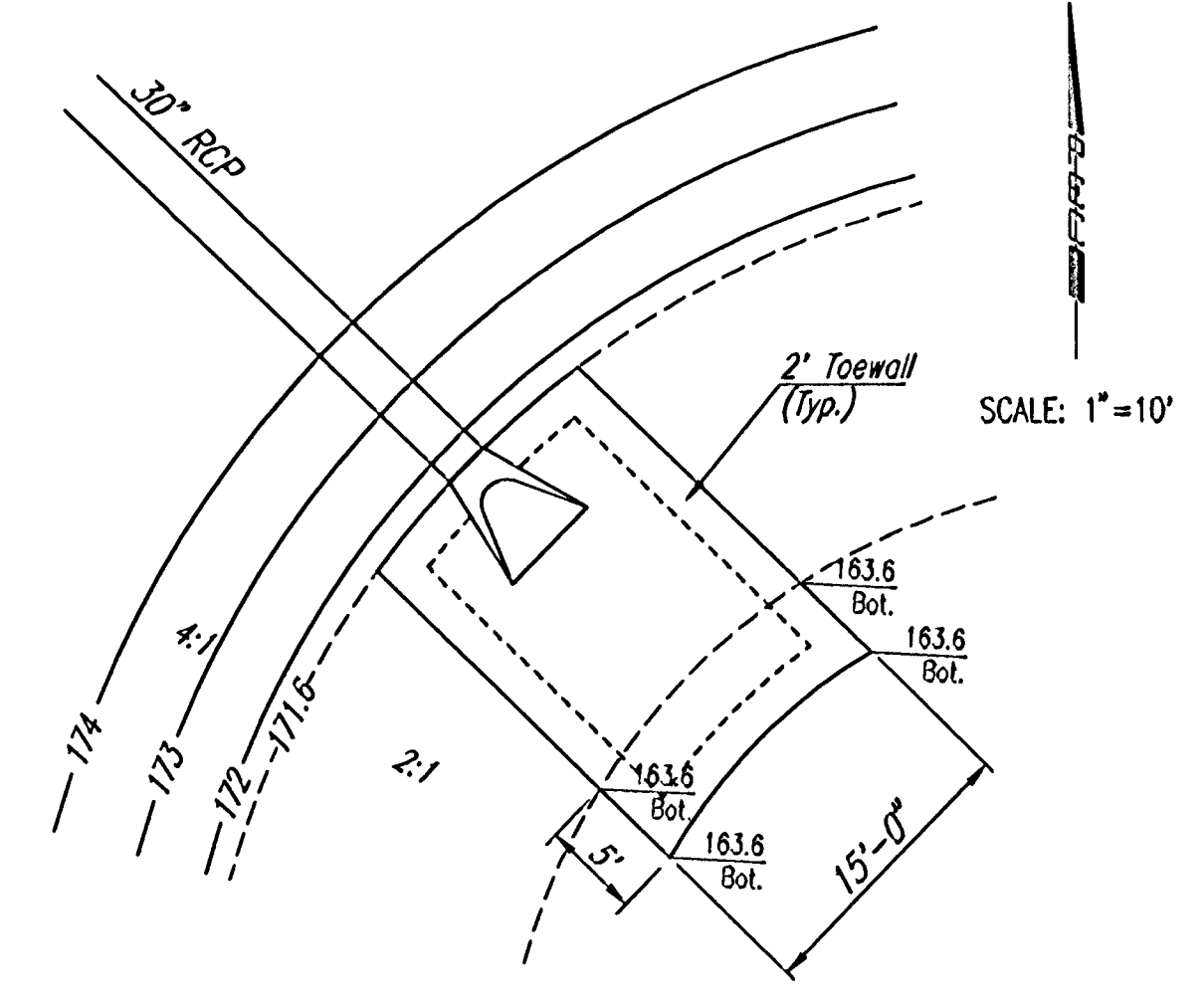
AS SOON AS POSSIBLE AFTER COMPLETION OF FOUNDATION TREATMENT, POND CONTRACTOR SHALL FILL PONDS WITH WATER TO STATIC POOL ELEVATION SHOWN ON THE PLANS TO PREVENT RUNOFF EROSION OF SIDE SLOPES. WATER TO BE FURNISHED BY THE CONTRACTOR.

POND SEALING, AS DESCRIBED HEREIN, SHALL BE MEASURED AND PAID FOR BY THE LUMP SUM. THE LUMP SUM BID FOR "POND SEALING" SHALL BE CONSIDERED FULL COMPENSATION FOR ALL OVEREXCAVATION, STOCKPILING, DOUBLE HANDLING OF EARTHWORK (IF NECESSARY), COMPACTING, WATER, FINAL FILLING OF POND, CORRECTION OF LEAKAGE AS DIRECTED BY THE ENGINEER, AND FOR ALL TOOLS, LABOR, EQUIPMENT AND INCIDENTALS NECESSARY TO COMPLETE THE WORK IN BOTH PONDS.

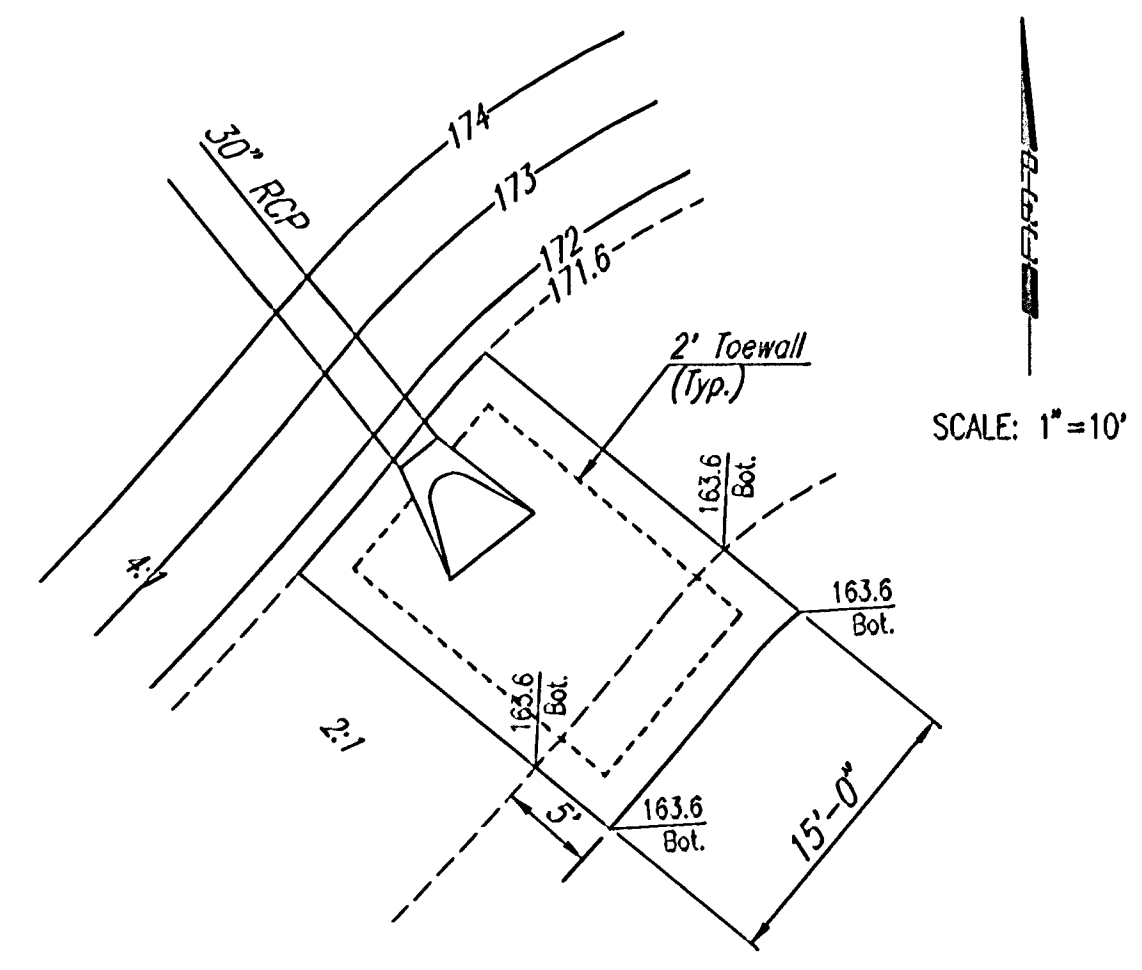
CONTRACTOR SHALL REMOVE MONITORING WELL 12" BELOW POND BOTTOM PRIOR TO PLUGGING, THEN PROCEED WITH POND SEALING AS DETAILED. SEE NOTE ON TITLE SHEET FOR MONITORING WELL PLUGGING REQUIREMENTS.



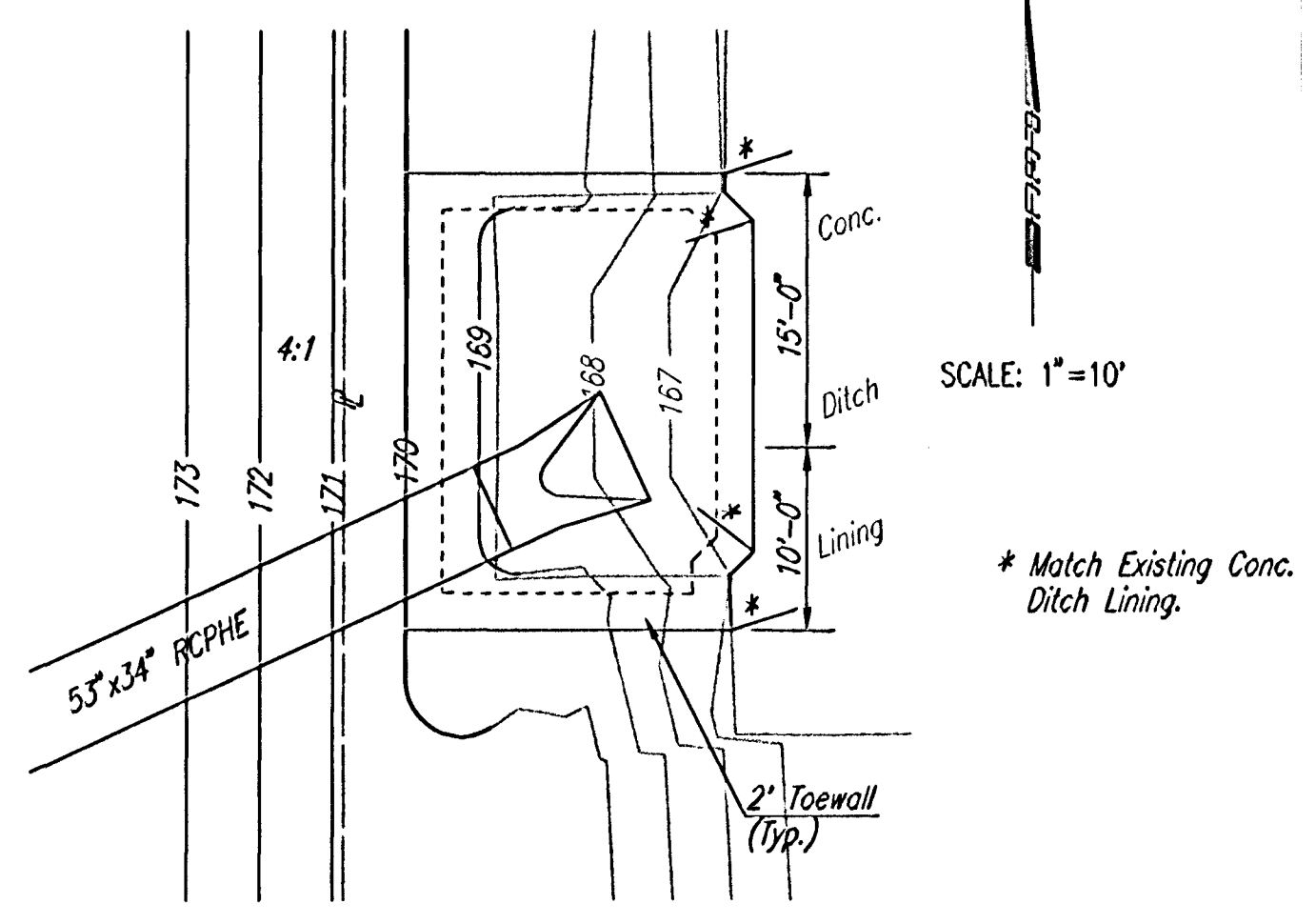
RIPRAP DETAIL
SWS LINE NO. 1



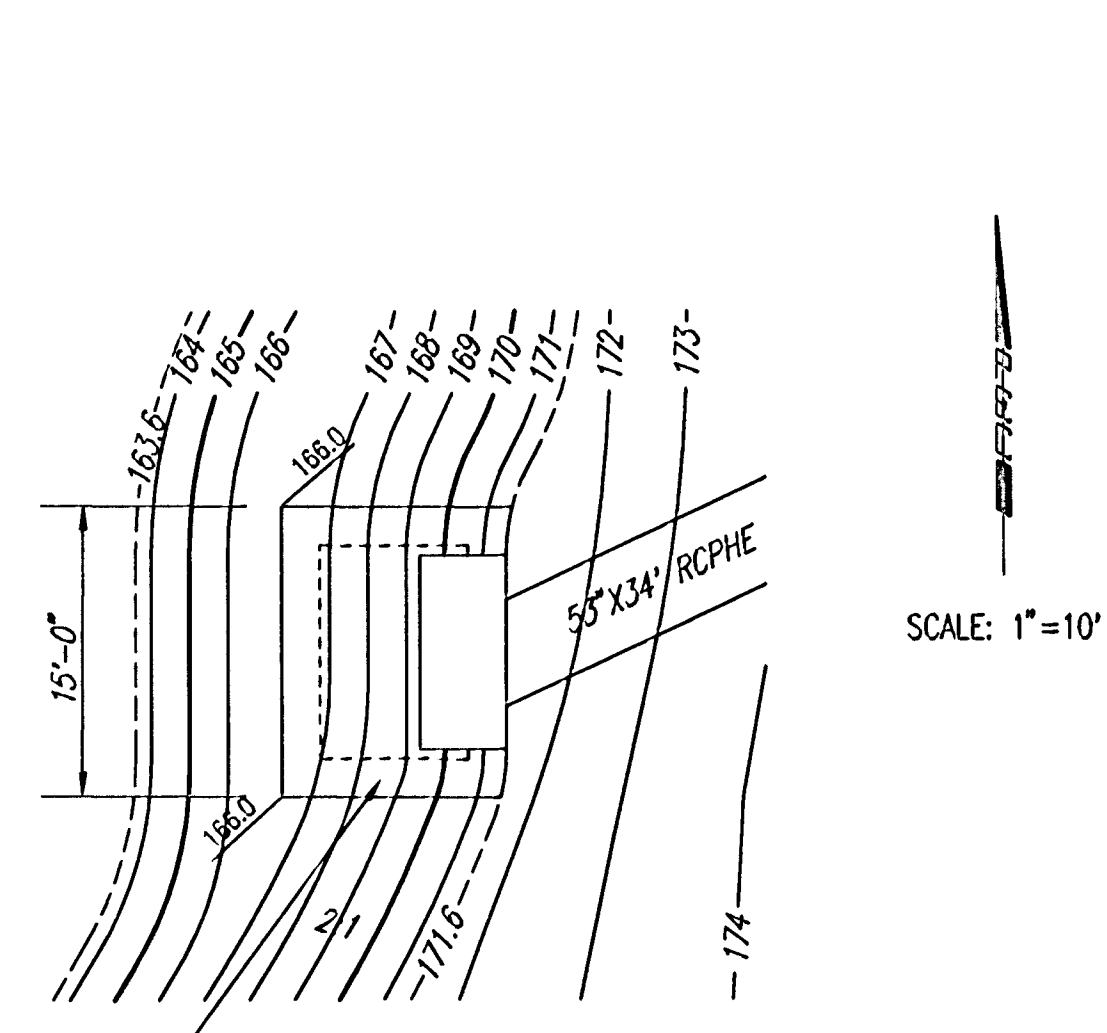
RIPRAP DETAIL
SWS LINE NO. 2



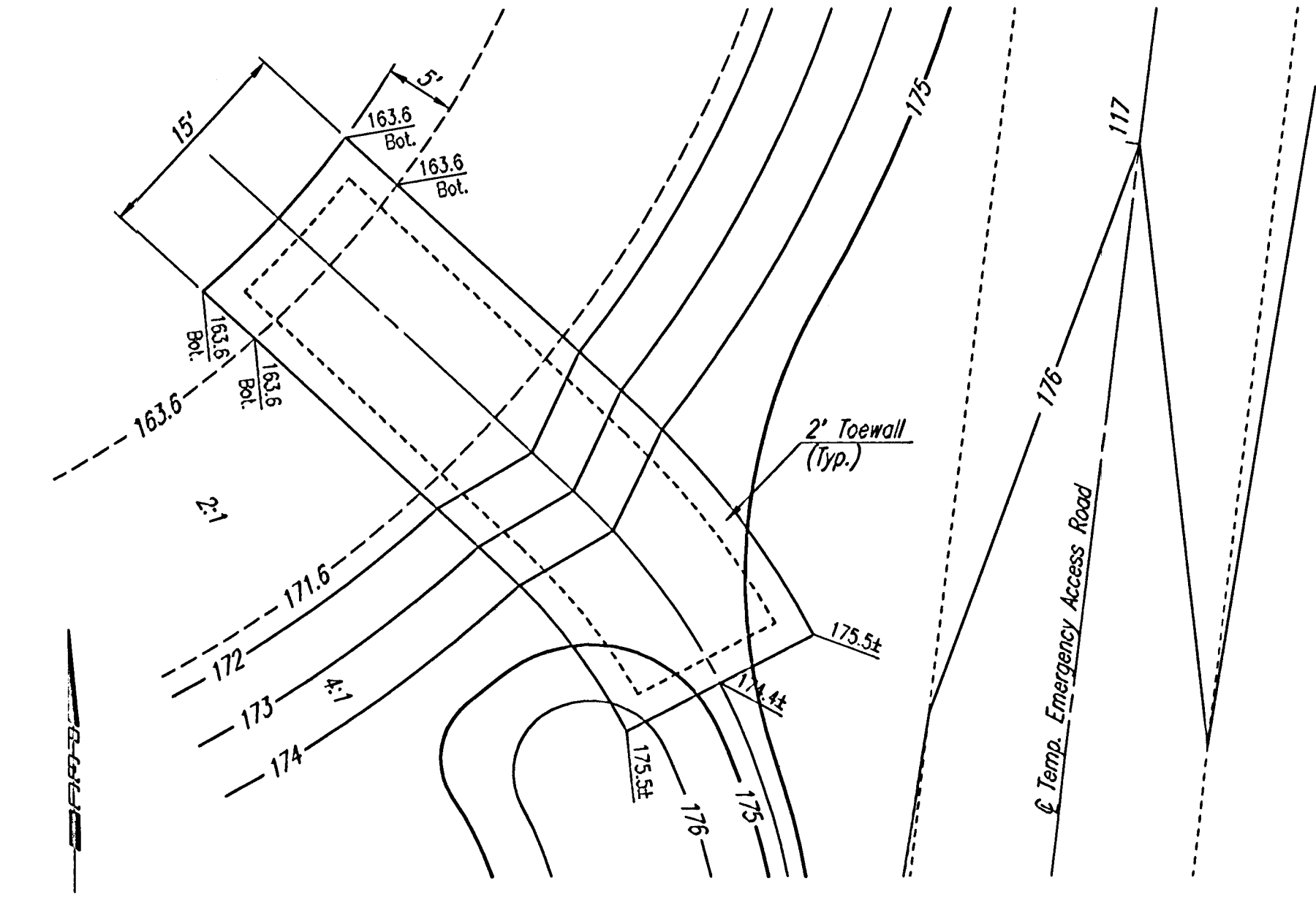
RIPRAP DETAIL
SWS LINE NO. 3



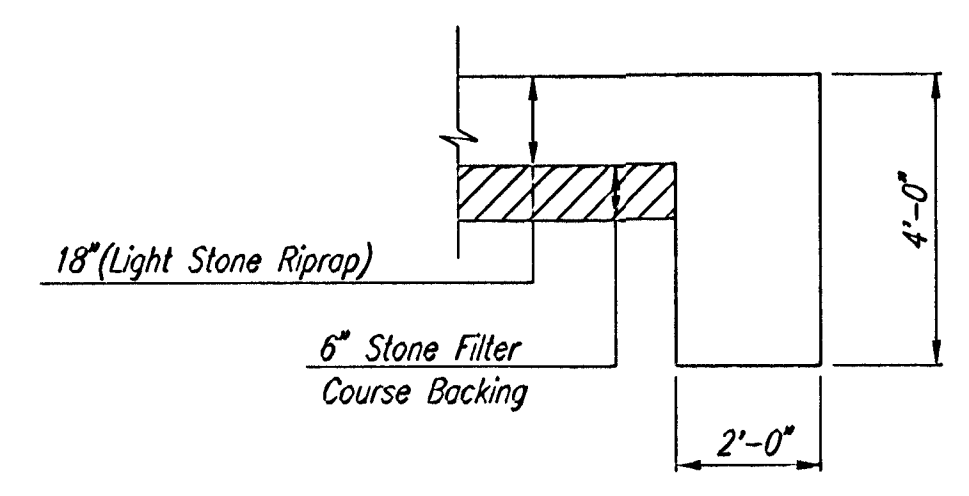
RIPRAP DETAIL
SWS LINE NO. 4
STA. 40+83.0



RIPRAP DETAIL
SWS LINE NO. 4
STA. 41+58.0



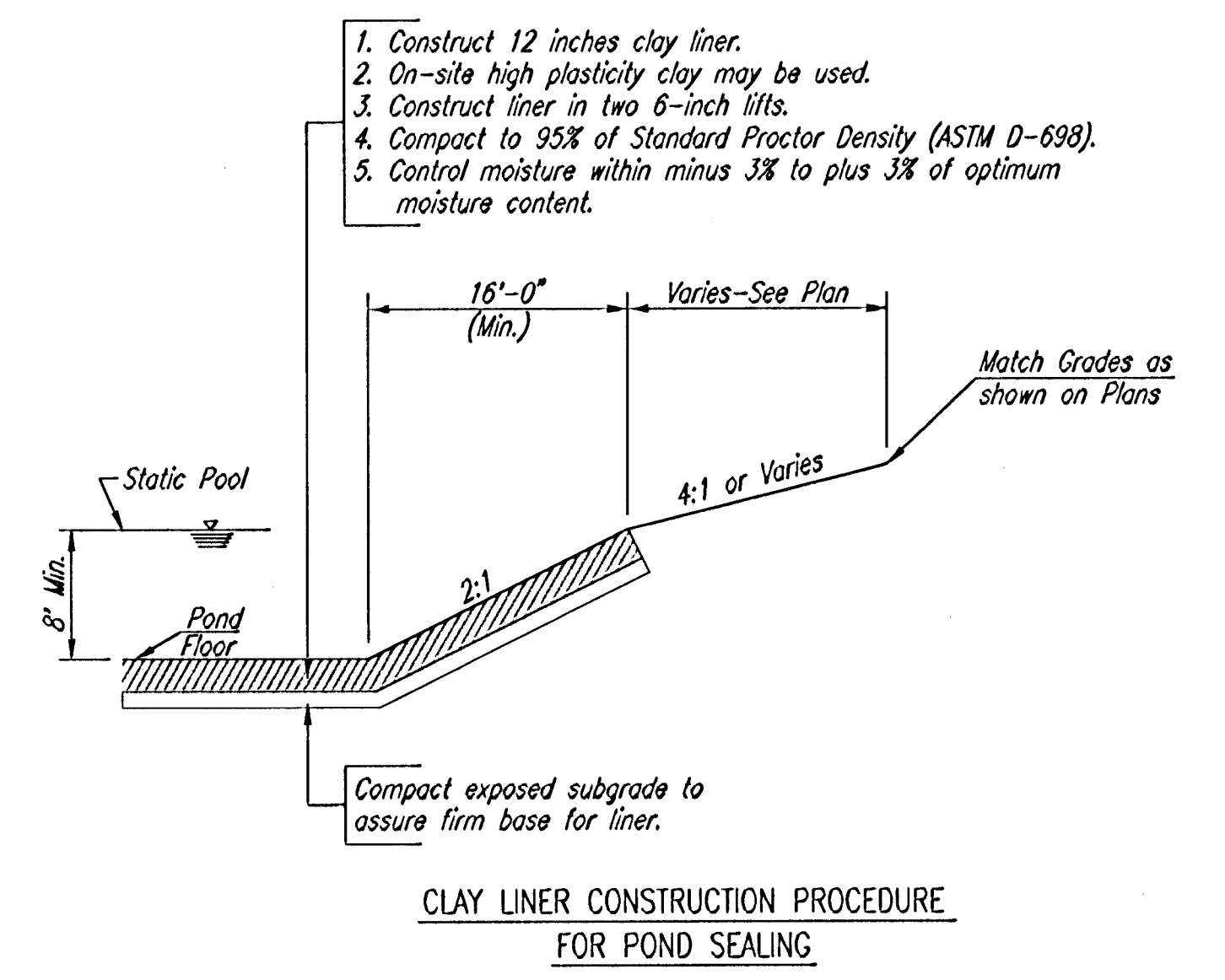
RIPRAP DETAIL
EMERGENCY ACCESS ROAD
OUTFALL DITCH



TYPICAL SECTION THRU TOEWALL
NO SCALE

NOTES

- ALL RIPRAP FOR THIS PROJECT SHALL BE NATURAL STONE. NEITHER BROKEN CONCRETE, FABRIC ENVELOPE, NOR PREMIXED DRY PACKAGED CONCRETE BAG ALTERNATES WILL BE ALLOWED.
- TOEWALLS SHALL BE INSTALLED ALONG ALL EDGES OF STONE RIPRAP.
- GROUTING OF THE SURFACE OF THE RIPRAP SHALL NOT BE PERFORMED. GROUTING OF THE TOEWALLS SHALL BE PERFORMED PER CITY SPECIFICATIONS.
- CONTRACTOR SHALL USE CAUTION TO MAINTAIN POND SEAL WHEN INSTALLING LIGHT STONE RIPRAP AND TOEWALLS.



CLAY LINER CONSTRUCTION PROCEDURE FOR POND SEALING

- Construct 12 inches clay liner.
- On-site high plasticity clay may be used.
- Construct liner in two 6-inch lifts.
- Compact to 95% of Standard Proctor Density (ASTM D-698).
- Control moisture within minus 3% to plus 3% of optimum moisture content.

CHAPEL HILL ADDITION

MISCELLANEOUS DRAINAGE DETAILS

Professional Engineering Consultants, P.A.
303 S. TOPEKA • WICHITA, KANSAS 67202
316-262-2691 • FAX 316-262-3003

| | | | |
|-------------|----------|------------|---------------|
| Designed by | BER, GDD | Checked by | |
| Drawn by | DEP, SAD | Date | JANUARY, 2001 |
| | | Job No. | 99127 |

DSNR: GDD OFER: DEP SCALE: 1"=10.00
 CA 1999V99:127:000:MSCDITL 06-12-2002 08:11:19 am