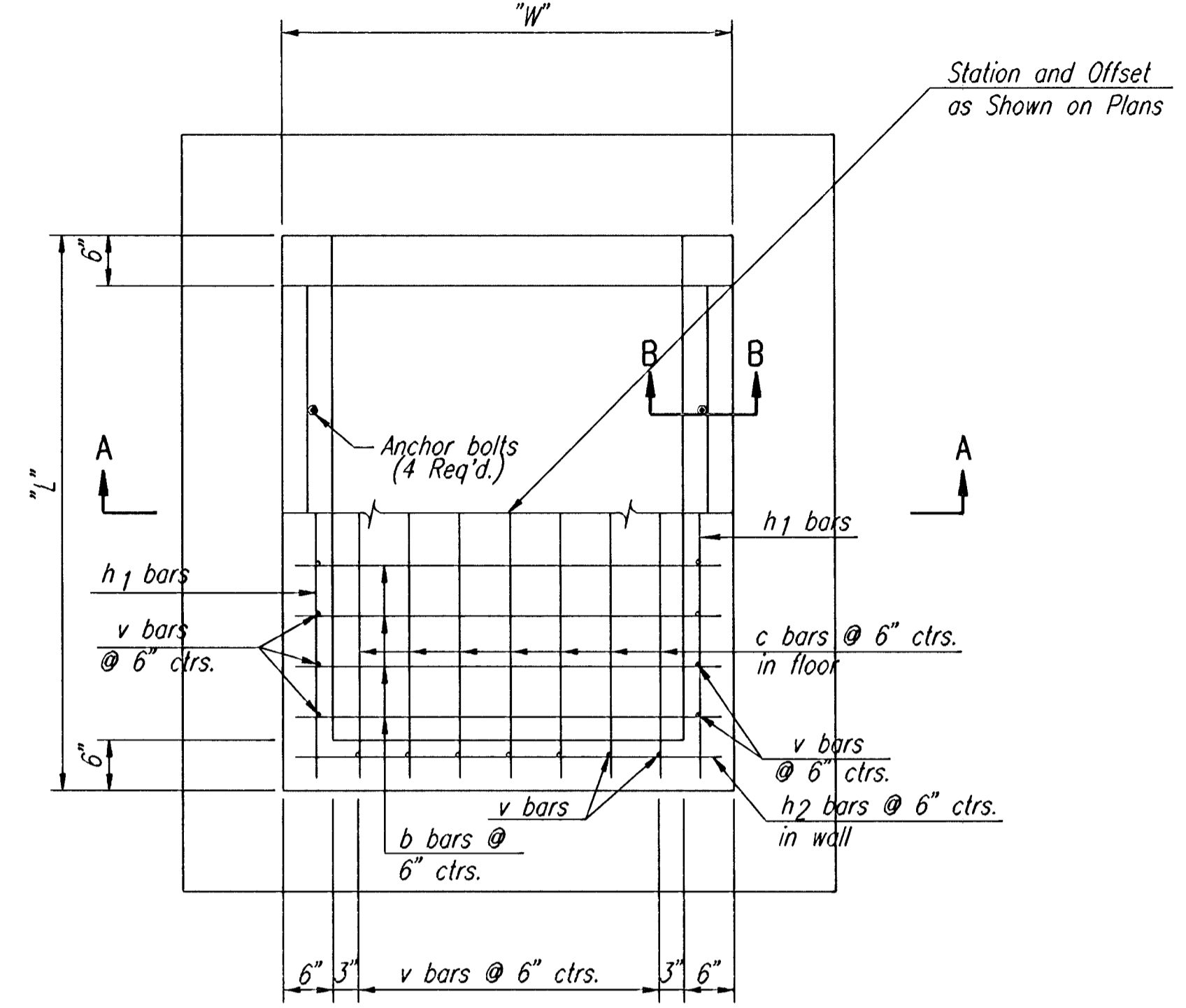
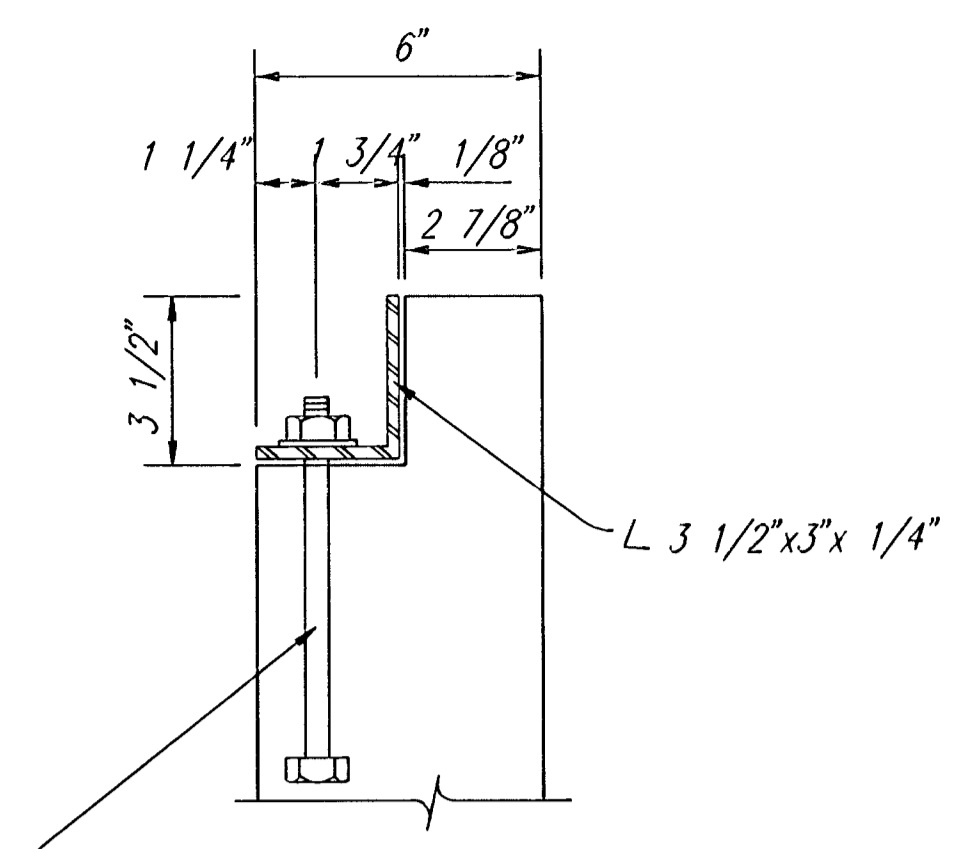


SECTION A-A



PLAN/SECTION

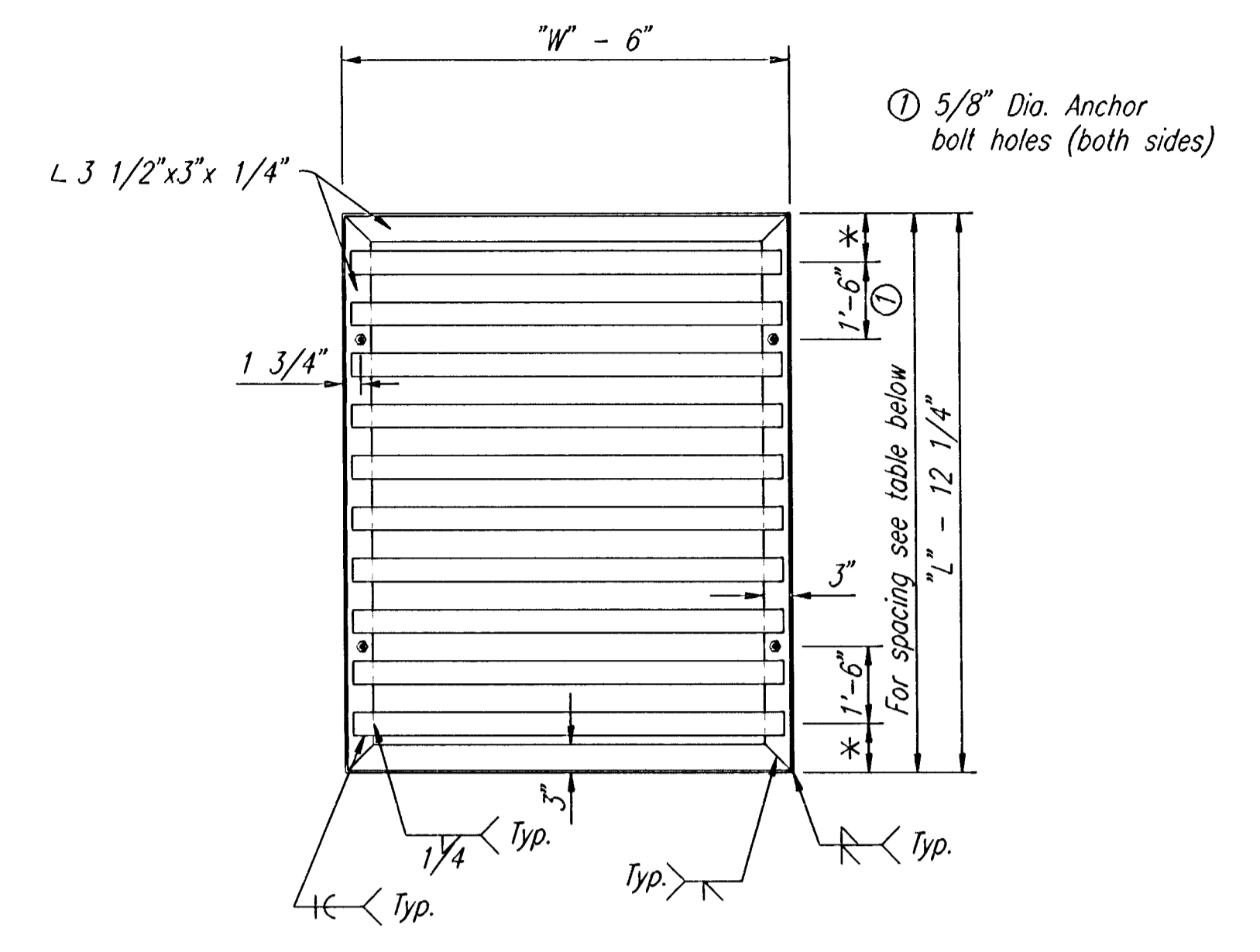


SECTION B-B

Note: Anchor bolts are subsidiary to the bid item "Type C Inlet".

BILL OF MATERIALS			
"L"	"W"	"H"	(170)
7'-6"	4'-6"	6'-6"	
Bar	No.	Size	Length
v	40	#4	5'-10"
c	26	#4	9'-3"
b	38	#4	6'-3"
h1	22	#4	7'-3"
h2	22	#4	4'-3"
Class "A" Conc.		4.03	Cu.Yd.
Reinf. steel		644	Lbs.
Struct. steel		450	Lbs.

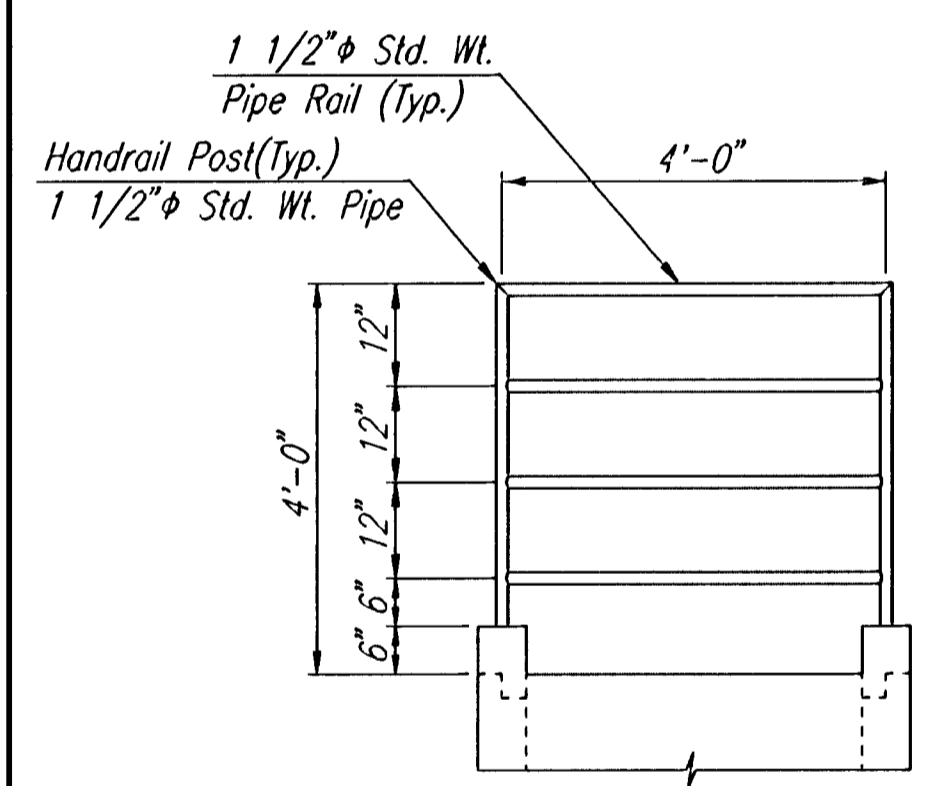
Quantities are for information only.



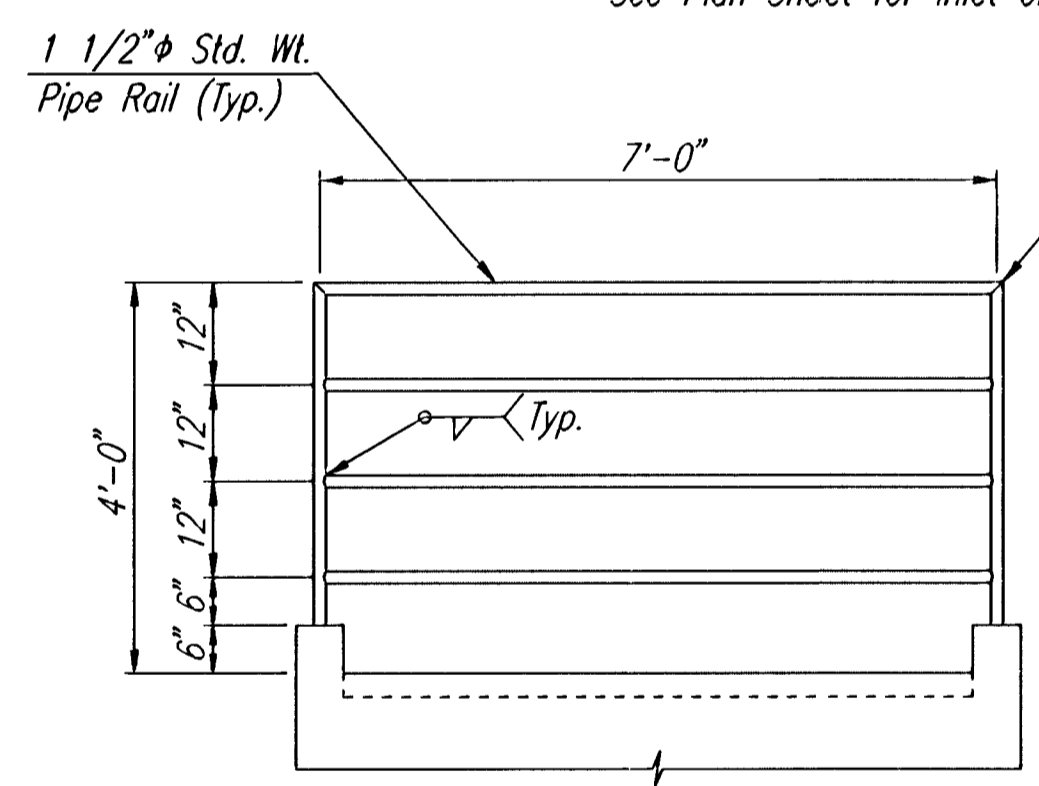
GRATE UNIT DETAILS

PIPE DIMENSIONS AND SPACING				
Location	L x W	No. of Pipes	Dia. x Length x Spacing	*
(170)	7'-6" x 4'-6"	6	2 1/2" dia x 3'-10 1/4" pipes @ 12" ctrs.	8 7/8"

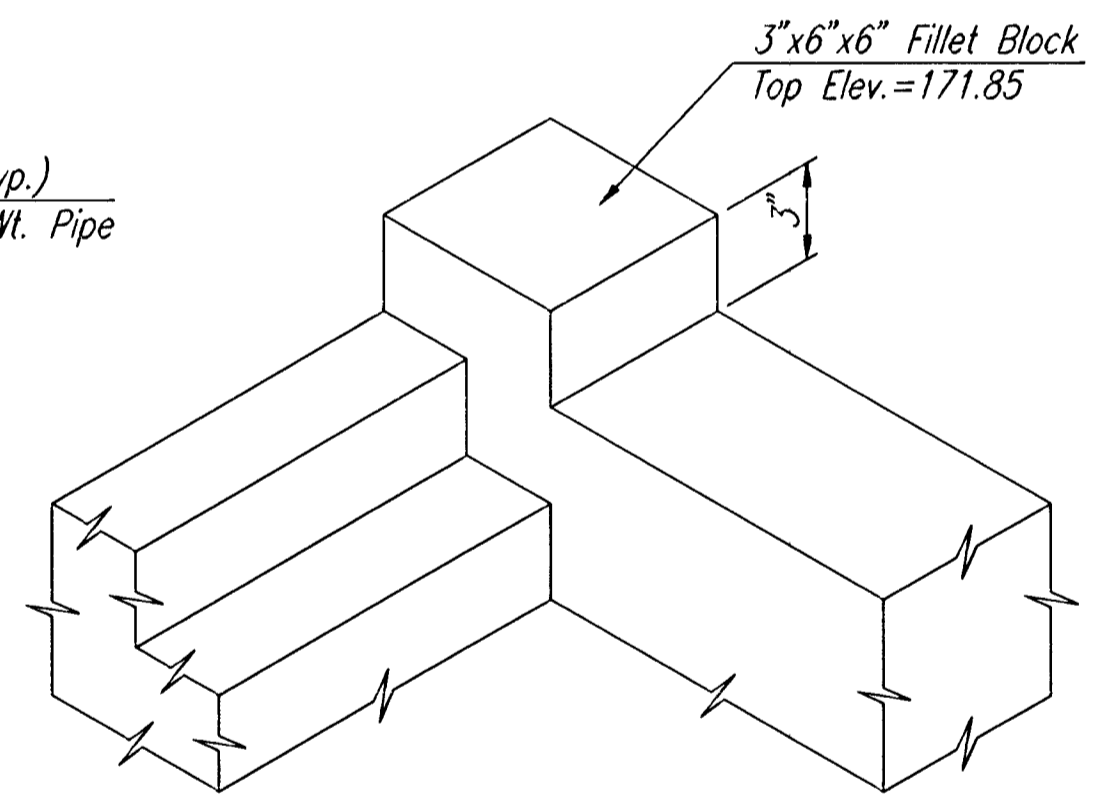
AREA INLET  
See Plan Sheet for Inlet orientation.



SIDE ELEVATION



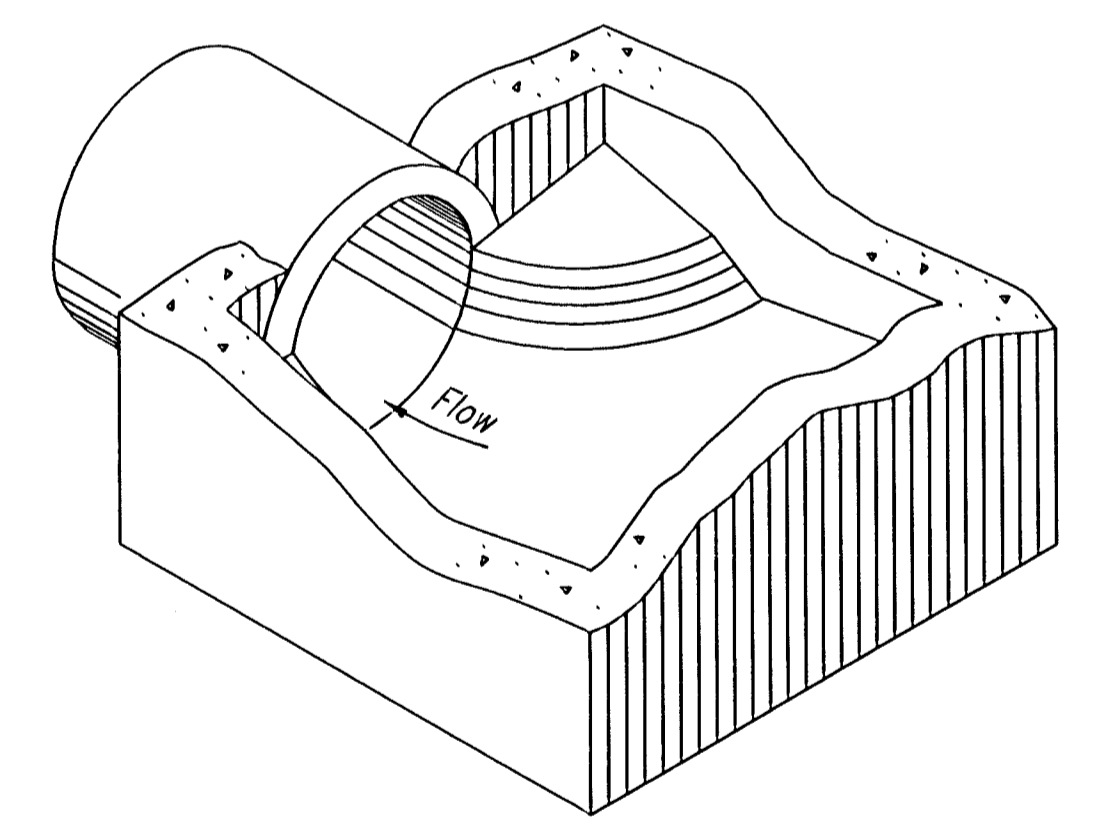
END ELEVATION



TYPICAL CORNER FILLET DETAIL

GENERAL NOTES

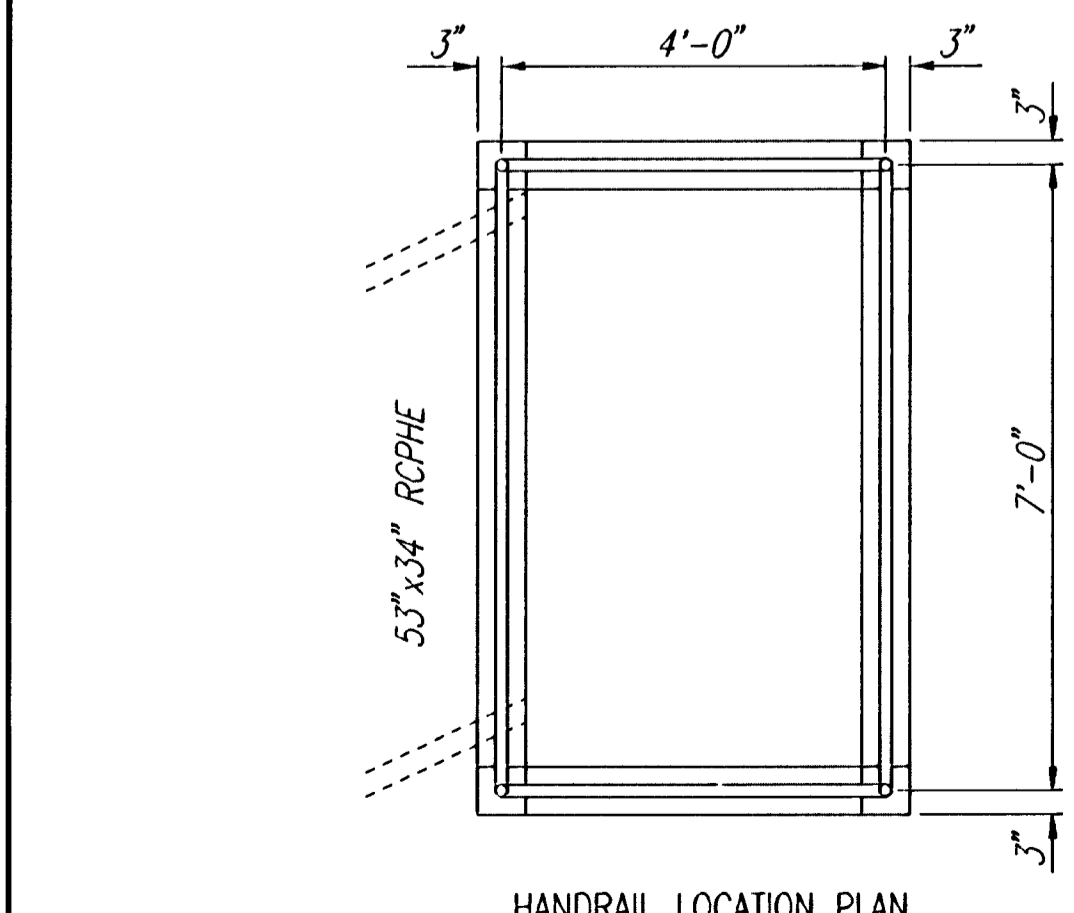
Concrete shall be as per City of Wichita Standard Specifications for Concrete Paving Mix. Except that it shall have a minimum 28 day compressive strength of 4,000 p.s.i. All Pipes shall be flush cut prior to being cast into the Inlet.  
 All dimensions relative to Reinforcing Steel are to centerline of bar unless otherwise noted. All Reinforcing Steel shall conform to A.S.T.M. Designation A615 Grade 60 and shall be Epoxy Coated.  
 All exposed edges shall be finished with an edging tool.  
 All external pipe to inlet joints shall be coated with an asphaltic tar to waterproof the joint interface.  
 Where possible bend bars around pipes.  
 Floor of inlet shall be shaped as shown. Concrete used for shaping shall be unreinforced concrete pavement mix. No addition in concrete quantities shall be made for shaping floor of inlet.  
 No deductions in concrete quantities shall be made for pipe openings.  
 All bars are #4 @ 6" spacing and shall have a minimum clearance of 1 1/2" unless otherwise noted on the plans.  
 The top of the inlet shall be set level.  
 Material and construction shall conform to the structural welding code A.W.S. D1.1-88.



Floor of inlet or manhole shall be shaped as shown to increase hydraulic efficiency.

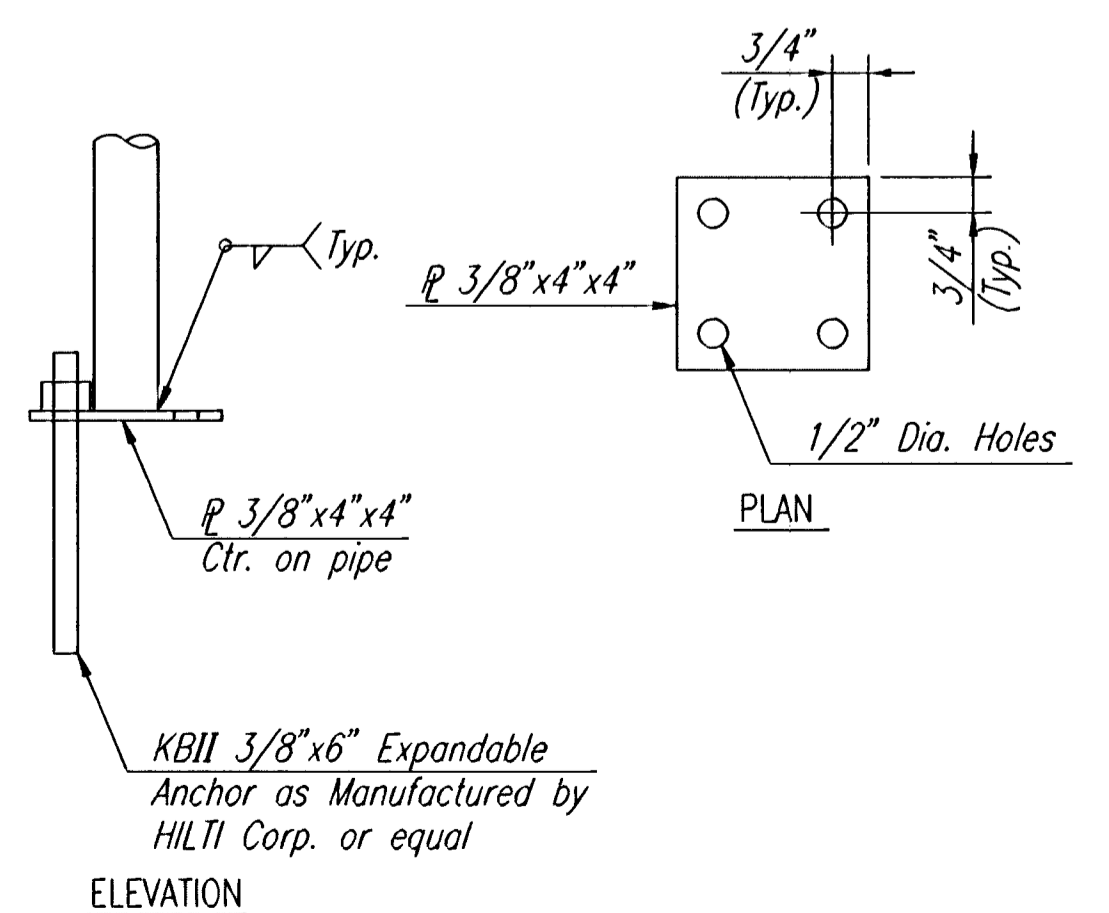
ISOMETRIC VIEW

Note: Inlet modified from KDOT Std. No. 648



HANDRAIL LOCATION PLAN

HANDRAIL DETAILS



ELEVATION

BASE PLATE DETAILS

GRATE UNIT

All structural steel and pipe shall comply to A.S.T.M. designation A36 or A53 grade B respectively. The unit shall be hot dipped, galvanized after fabrication, in accordance with ASTM A123 except the weight of coating shall average not less than 2.0 ounces per square foot of actual surface and no individual test shall show less than 1.8 ounces of coating per square foot of actual surface area.

HANDRAIL UNIT

All structural steel and pipe shall comply to A.S.T.M. designation A36 or A53 Grade B respectively.  
 The paint system shall be provided by Carboline: 350 Hanley Industrial Ct.: St. Louis, MO. The application will be in accordance with the manufacturers recommendations. The paint procedure is as follows:  
 1. Abrasive blast to commercial finish SSPC-SP6 to obtain a surface profile of 1 1/2 mils.  
 2. Apply 2 coats of Carboline GP 818 Primer (2 to 4 mils per coat).  
 3. Apply one topcoat of Subsil 30 HS (2 to 3 mils)(Color Carboline -0336). An approved substitution of the total paint system will be allowed with the approval of the engineer.  
 Shop details must be submitted and approved by the engineer.

CHAPEL HILL ADDITION

### TYPE C INLET DETAILS

Professional Engineering Consultants, P.A.  
 303 S. TOPEKA • WICHITA, KANSAS 67202  
 316-262-2691 • FAX 316-262-3003

Designed by BER, ODD  
 Checked by  
 Drawn by DEP  
 Date JULY 1999  
 Job No. 99127