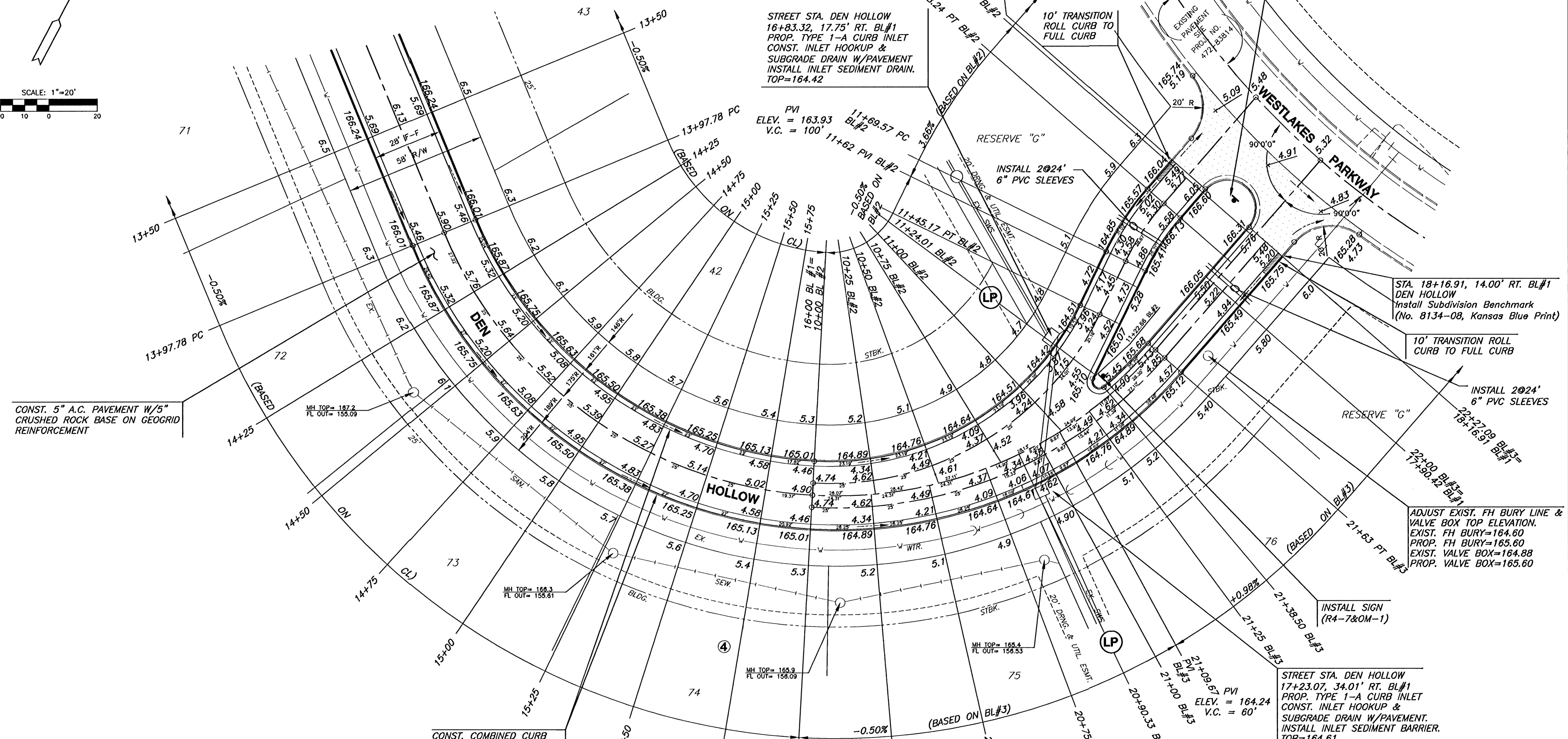


SCALE: 1"=20'

FOX RIDGE ADDITION



STREET STA. DEN HOLLOW
 16+83.32, 17.75' RT. BL#1
 PROP. TYPE 1-A CURB INLET
 CONST. INLET HOOKUP &
 SUBGRADE DRAIN W/PAVEMENT
 INSTALL INLET SEDIMENT DRAIN.
 TOP=164.42

PVI
 ELEV. = 163.93
 V.C. = 100'

INSTALL SIGN
 (R4-7&OM-1)

CONST. 5" A.C. PAVEMENT W/5"
 CRUSHED ROCK BASE ON GEOGRID
 REINFORCEMENT

STA. 18+16.91, 14.00' RT. BL#1
 DEN HOLLOW
 Install Subdivision Benchmark
 (No. 8134-08, Kansas Blue Print)

10' TRANSITION ROLL
 CURB TO FULL CURB

INSTALL 20' 24"
 6" PVC SLEEVES

ADJUST EXIST. FH BURY LINE &
 VALVE BOX TOP ELEVATION.
 EXIST. FH BURY=164.60
 PROP. FH BURY=165.60
 EXIST. VALVE BOX=164.88
 PROP. VALVE BOX=165.60

INSTALL SIGN
 (R4-7&OM-1)

STREET STA. DEN HOLLOW
 17+23.07, 34.01' RT. BL#1
 PROP. TYPE 1-A CURB INLET
 CONST. INLET HOOKUP &
 SUBGRADE DRAIN W/PAVEMENT.
 INSTALL INLET SEDIMENT BARRIER.
 TOP=164.61

CONST. COMBINED CURB
 AND GUTTER, ROLL 3 5/8"

FOX RIDGE ADDITION

LEGEND

+ STREET SIGN & SIGN LOCATION
 (SEE SIGN ASSEMBLY TABLE
 FOR TYPE & STATION OF SIGN)



FOX RIDGE ADDITION
 PROJECT NAME

DEN HOLLOW - PHASE 3
 SHEET TITLE

DK DESIGN BY. DM DRAWN BY. DK CHECKED BY.

SEPTEMBER 2003 99118E2 7 / 24
 DATE JOB NO. SHEET/OF