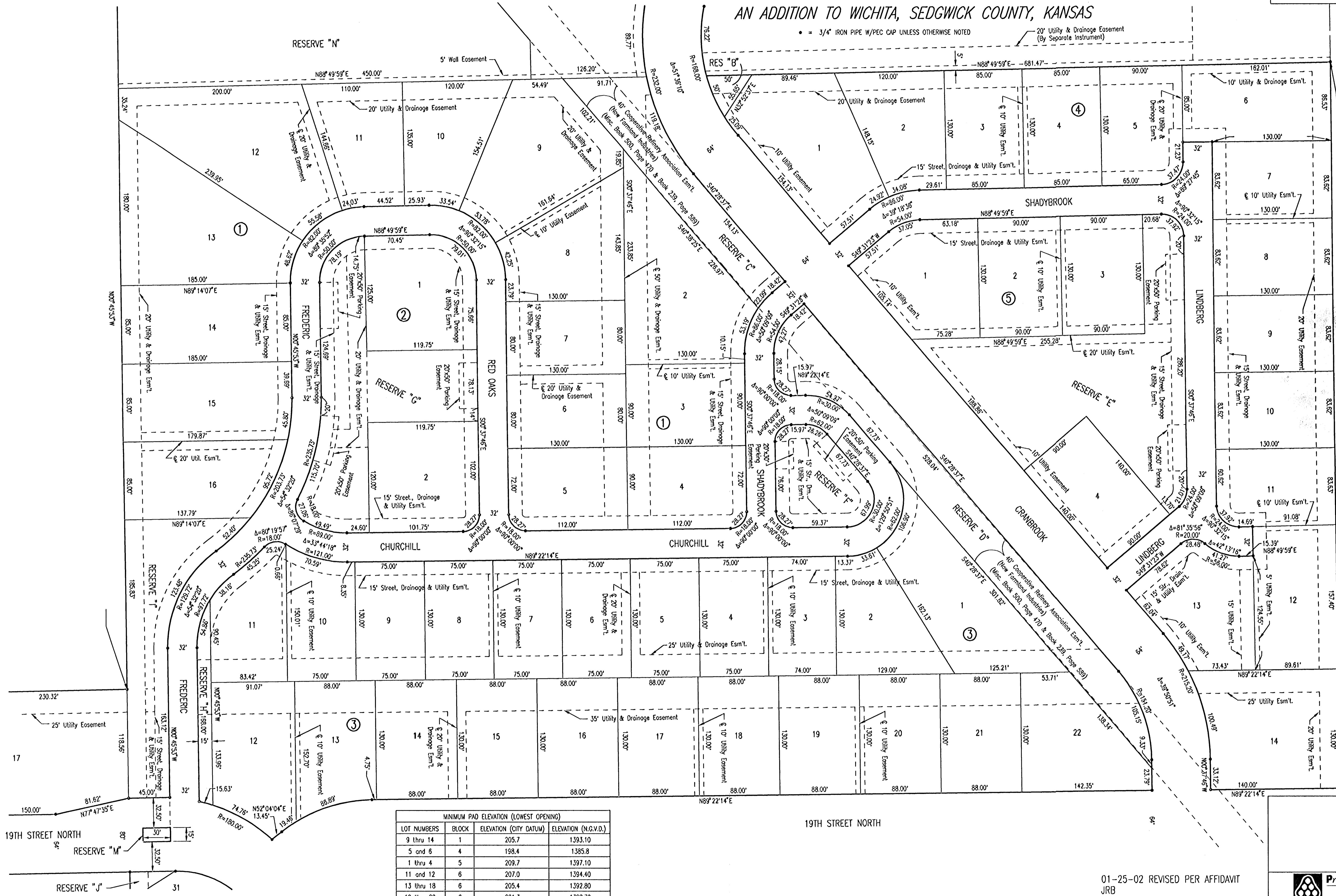


REMINGTON PLACE

AN ADDITION TO WICHITA, SEDGWICK COUNTY, KANSAS

• = 3/4" IRON PIPE W/PEC CAP UNLESS OTHERWISE NOTED
 20' Utility & Drainage Easement (By Separate Instrument)



| MINIMUM PAD ELEVATION (LOWEST OPENING) | | | |
|--|-------|------------------------|----------------------|
| LOT NUMBERS | BLOCK | ELEVATION (CITY DATUM) | ELEVATION (N.G.V.D.) |
| 9 thru 14 | 1 | 205.7 | 1393.10 |
| 5 and 6 | 4 | 198.4 | 1385.8 |
| 1 thru 4 | 5 | 209.7 | 1397.10 |
| 11 and 12 | 6 | 207.0 | 1394.40 |
| 13 thru 18 | 6 | 205.4 | 1392.80 |
| 19 thru 22 | 6 | 201.3 | 1388.70 |
| 12 thru 30 | 7 | 203.5 | 1390.90 |

DSNR, DEP, OPER, DEP SCALE: 1"=50.00
 01-2002\02398\000\PLANS\ 12-03-2002 03:21:12 pm

REMINGTON PLACE - PHASE 2

PLAT

01-25-02 REVISED PER AFFIDAVIT
 JRB

Professional Engineering Consultants, P.A.
 303 S. TOPEKA • WICHITA, KANSAS 67202
 316-262-2691 • FAX 316-262-3003

| | | | |
|-------------|-----|------------|-----------|
| Designed by | BER | Checked by | |
| Drawn by | DEP | Date | DEC, 2002 |
| | | Job No. | 02398 |