

PROJECT NO.	SHEET NO.	TOTAL SHEETS
472-83376	4	50

# REMINGTON PLACE 2ND

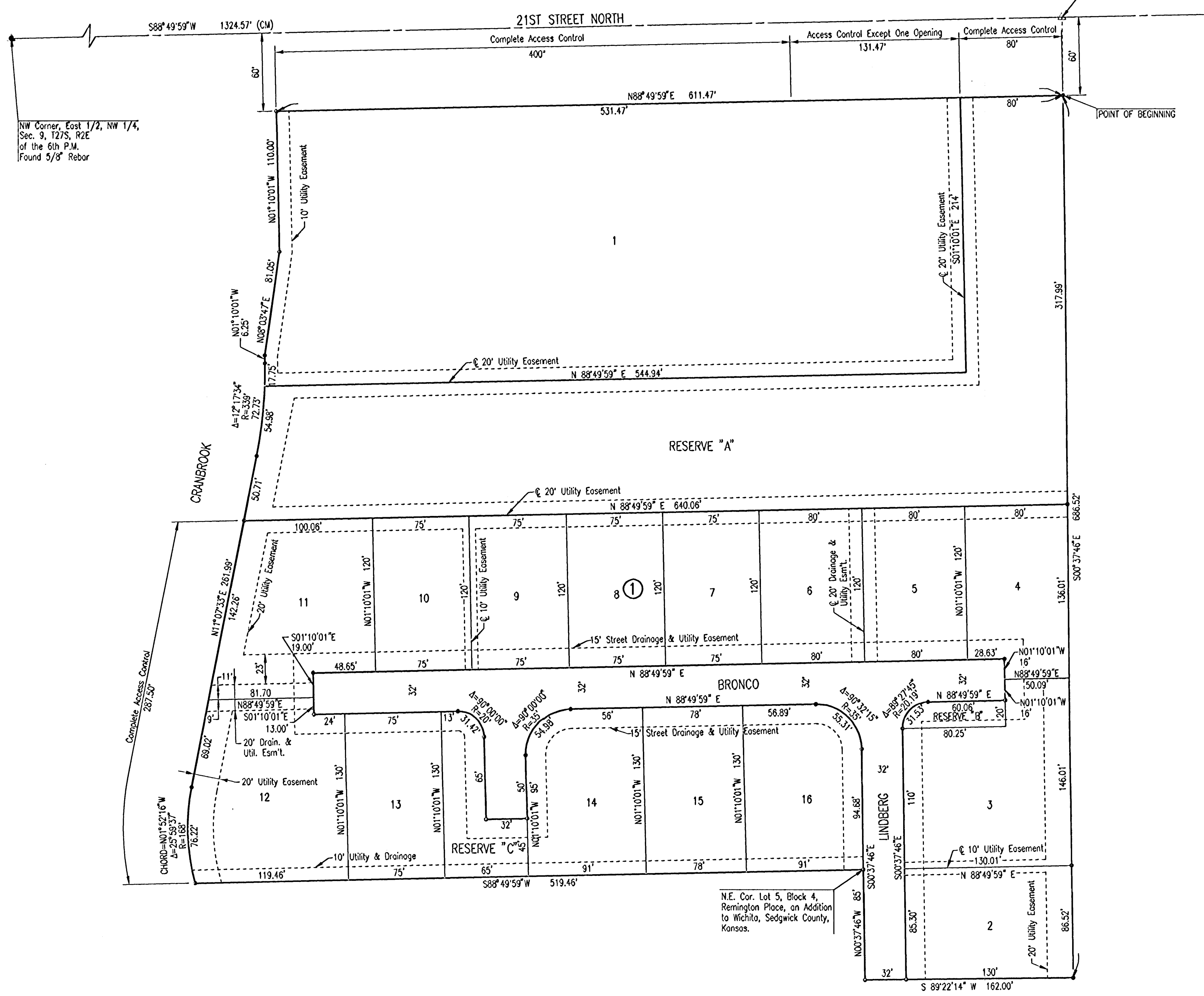
## AN ADDITION TO WICHITA, SEDGWICK COUNTY, KANSAS

SCALE: 1" = 50'

• = 1/2" REBAR W/PEC CAP UNLESS OTHERWISE NOTED

B.M.#1 - CHISELED SQUARE ON CENTER OF CURB INLET ON THE SOUTH CURB OF 21ST ST. N., 30' SOUTH AND 40' WEST OF NORTH 1/4 CORNER SECTION 9, T27S, R2E. ELEV. = 195.385 (City Datum) ELEV. = 1382.785 N.G.V.D.

North 1/4 Corner, Sec. 9, T27S, R2E of the 6th P.M. Found 1/2" Rebar



NW Corner, East 1/2, NW 1/4, Sec. 9, T27S, R2E of the 6th P.M. Found 5/8" Rebar

N.E. Cor. Lot 5, Block 4, Remington Place, an Addition to Wichita, Sedgwick County, Kansas.

DSNR: DEP OPER: DEP SCALE: 1"=50.00  
 Q:\2002\02398\000\PLATS\ 12-03-2002 03:20:37 pm

REMINGTON PLACE - PHASE 2

## PLAT

**Professional Engineering Consultants, P.A.**  
 303 S. TOPEKA • WICHITA, KANSAS 67202  
 316-262-2691 • FAX 316-262-3003

Designed by	Checked by
Drawn by DEP	Date DEC, 2002 Job No. 02398