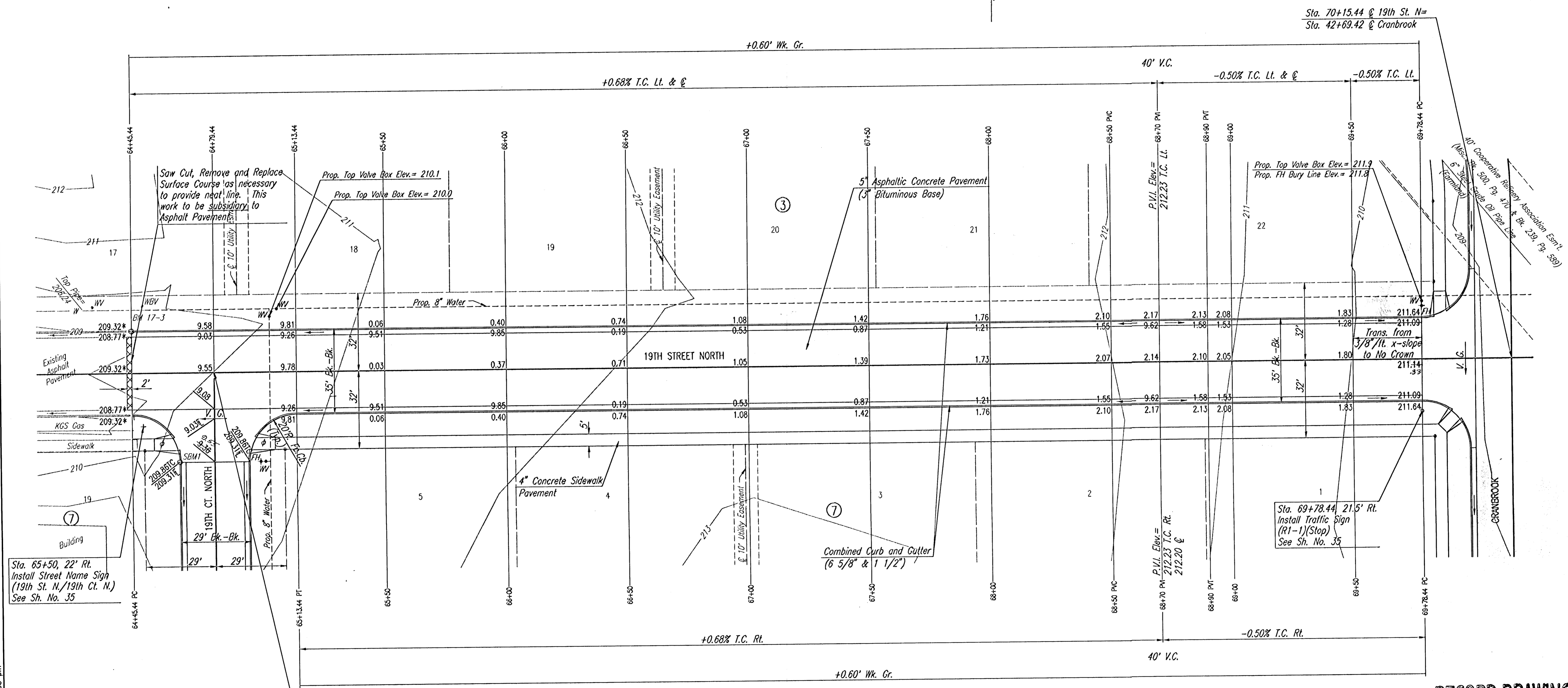


WATER VALVE BOX ELEVATIONS			
STREET	STATION	OFFSET	PROPOSED ELEVATION
19TH STREET NORTH	65+02.44	23.0'LL	210.1
19TH STREET NORTH	65+05.44	26.0'LL	210.0
19TH STREET NORTH	69+78.44	24.0'LL	211.9

SCALE: 1"=20'



Sta. 65+50, 22' Rt.
Install Street Name Sign
(19th St. N./19th Ct. N.)
See Sh. No. 35

Saw Cut, Remove and Replace
Surface Course as necessary
to provide neat line. This
work to be subsidiary to
Asphalt Pavement

Prop. Top Valve Box Elev. = 211.9
Prop. FH Bury Line Elev. = 211.8

Sta. 69+78.44, 21.5' Rt.
Install Traffic Sign
(R1-1)(Stop)
See Sh. No. 35

Sta. 64+79.44 @ 19th St. N.=
Sta. 50+00.00 @ 19th Ct. N.

RECORD DRAWING

REMINGTON PLACE - PHASE 2

19TH STREET NORTH
STA. 64+45.44 TO STA. 69+78.44

Professional Engineering Consultants, P.A.
303 S. TOPEKA • WICHITA, KANSAS 67202
316-262-2691 • FAX 316-262-3003

Designed by	BER	Checked by	
Drawn by	DEP	Date	DEC, 2002
		Job No.	02398

DSNR: DEP OPER: DEP SCALE: 1"=20.00
 CA: 2002/02/29 00:19 THSI: 12-03-2002 03:16:08 pm