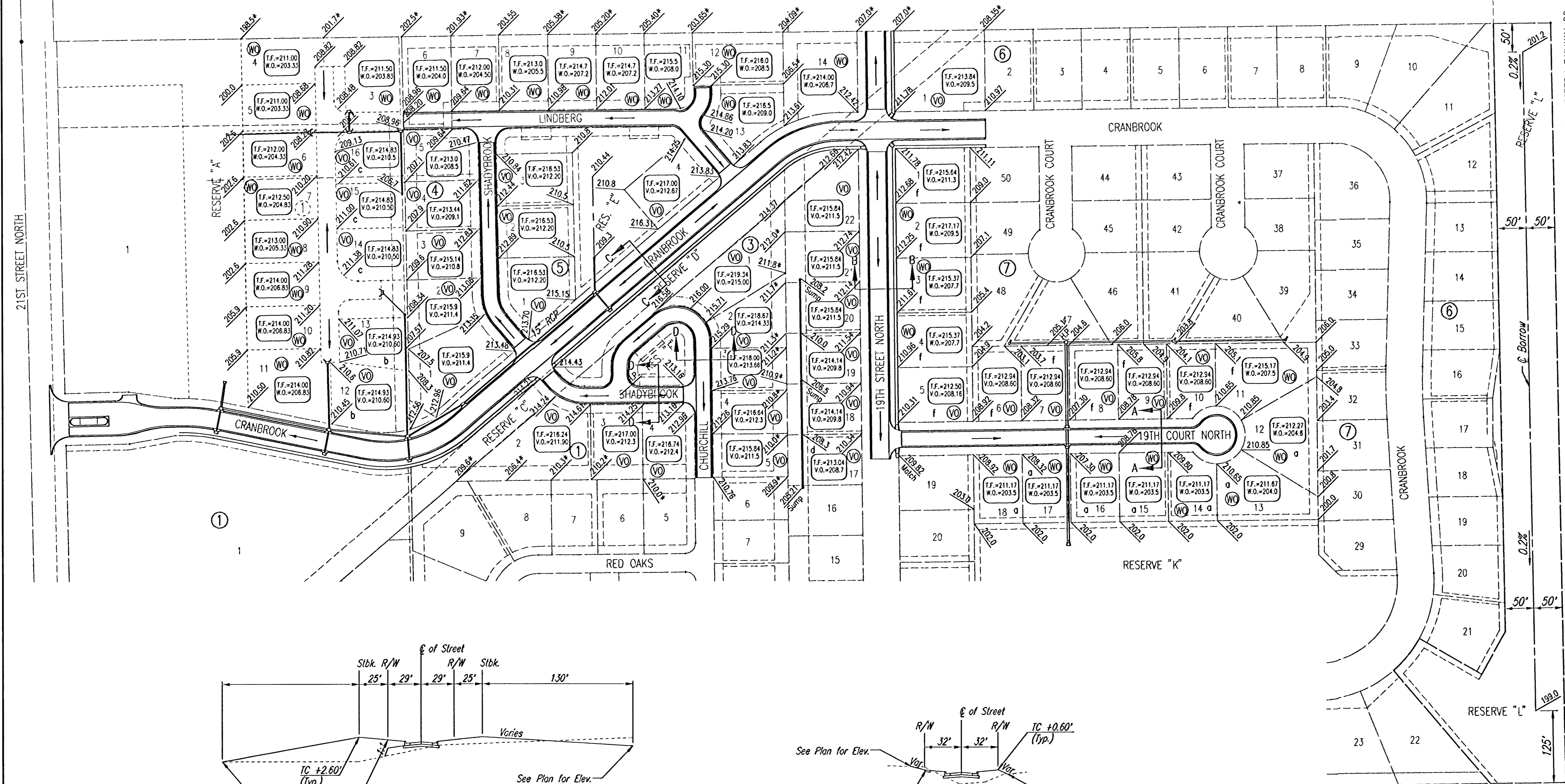


REMINGTON PLACE

AN ADDITION TO WICHITA, SEDGWICK COUNTY, KANSAS

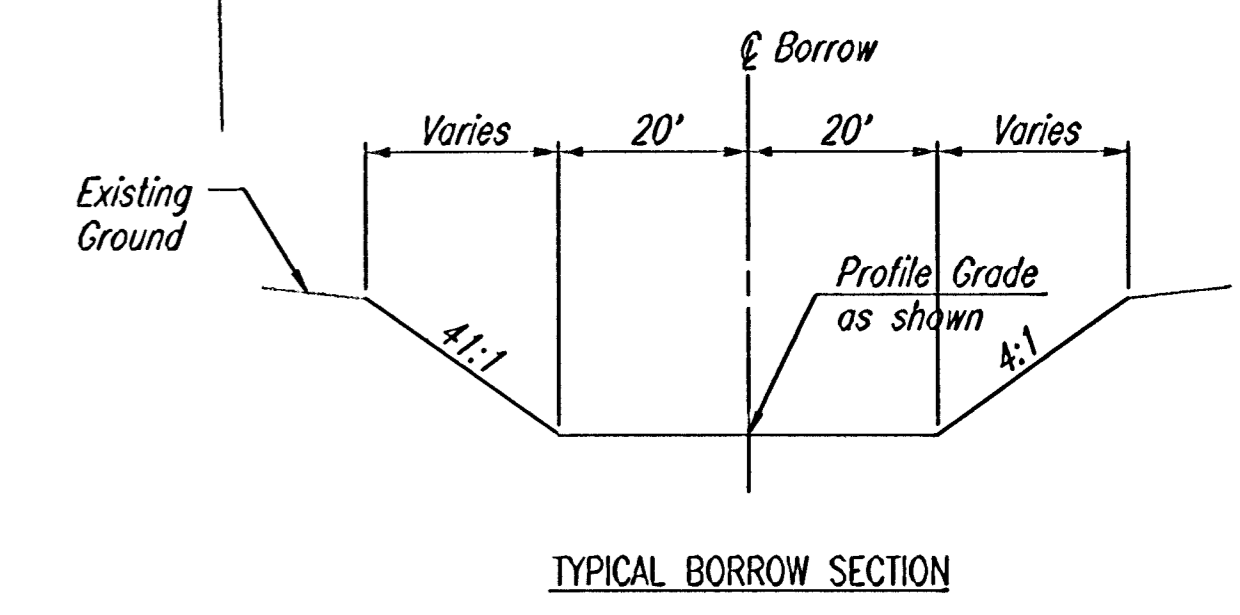
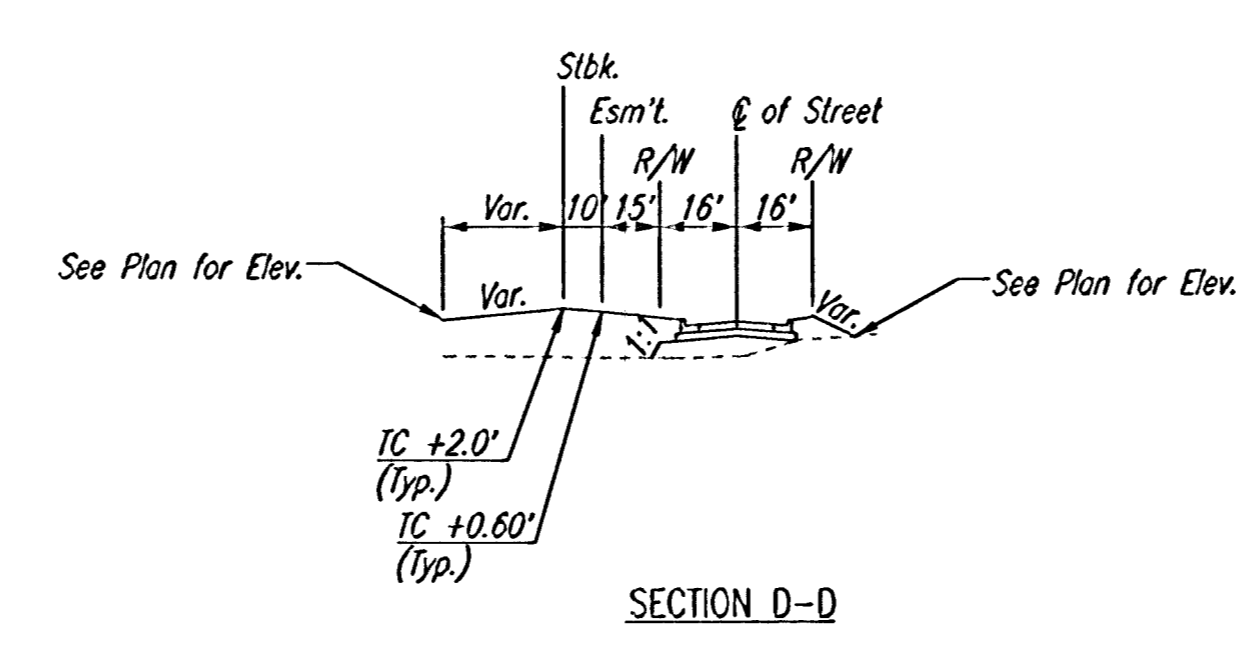
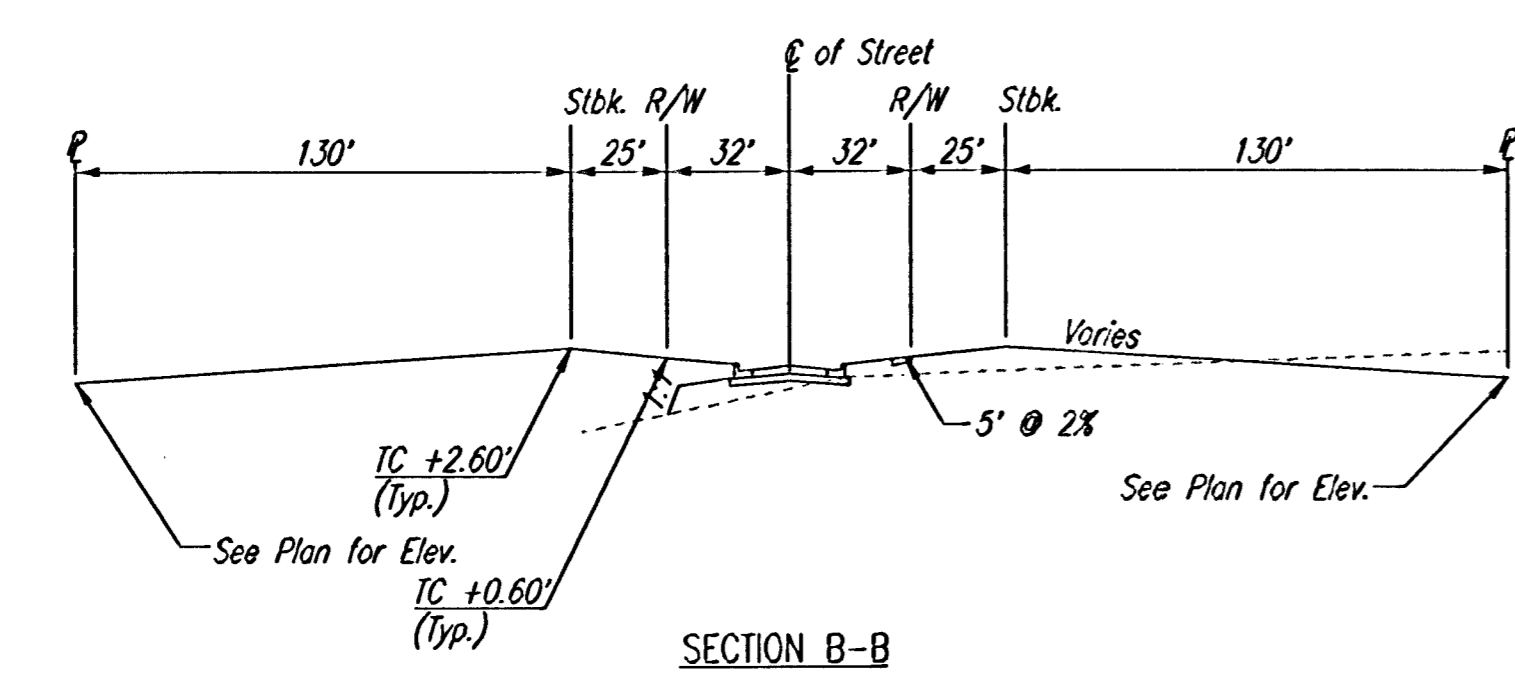
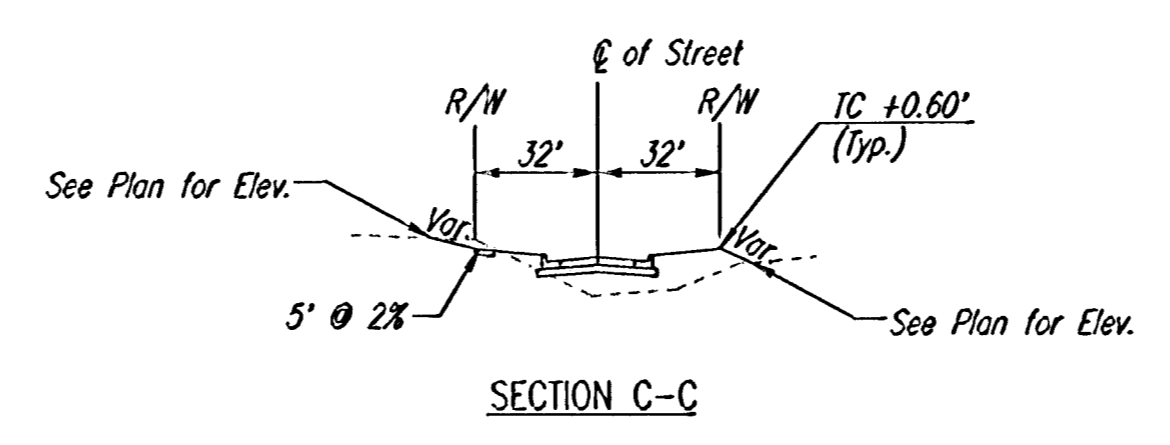
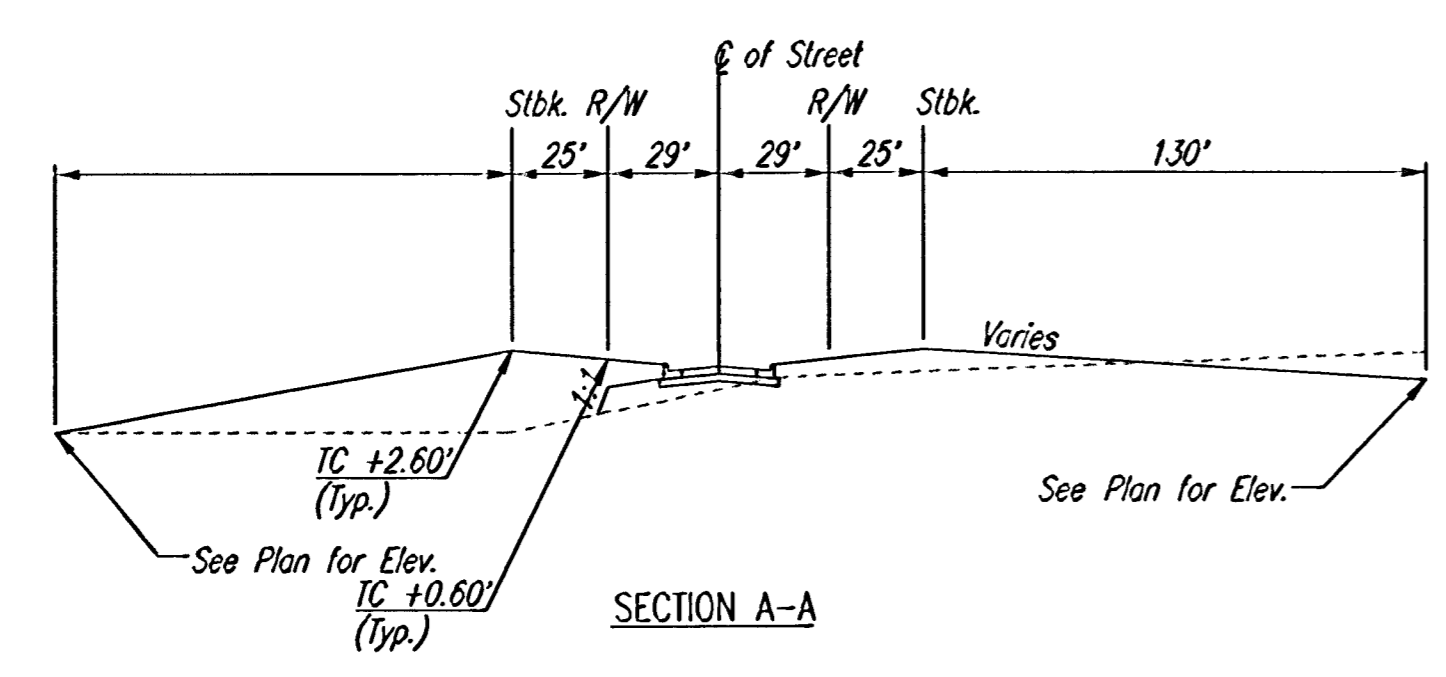
SCALE: 1" = 100'

PROJECT NO. 472-83376	SHEET NO. 30	TOTAL SHEETS 50
--------------------------	-----------------	--------------------



- a MINIMUM OPENING= 203.5
- b MINIMUM OPENING= 210.6
- c MINIMUM OPENING= 210.5
- d MINIMUM OPENING= 208.7
- f MINIMUM OPENING= 207.5

- (X) STD. BASEMENT
- (VO) VIEW-OUT BASEMENT
- (WC) WALK-OUT BASEMENT
- * MATCH EXISTING



DSNR: SAW OPER. ILS SCALE: 1"=100.00
 Q:\2002\02398\000\CHANGE ORDER\05-13-03\CORNER 11-21-2003 08:21:38 am

RECORD DRAWING
Professional Engineering Consultants, P.A.
 24 NOV 03
 REVISED 05/13/03

FOUR CORNER LOT GRADING

Professional Engineering Consultants, P.A.	
303 S. TOPEKA • WICHITA, KANSAS 67202	
316-262-2691 • FAX 316-262-3003	
Designed by BER	Checked by
Drawn by SAW	Date DEC., 2002
Job No. 02398	