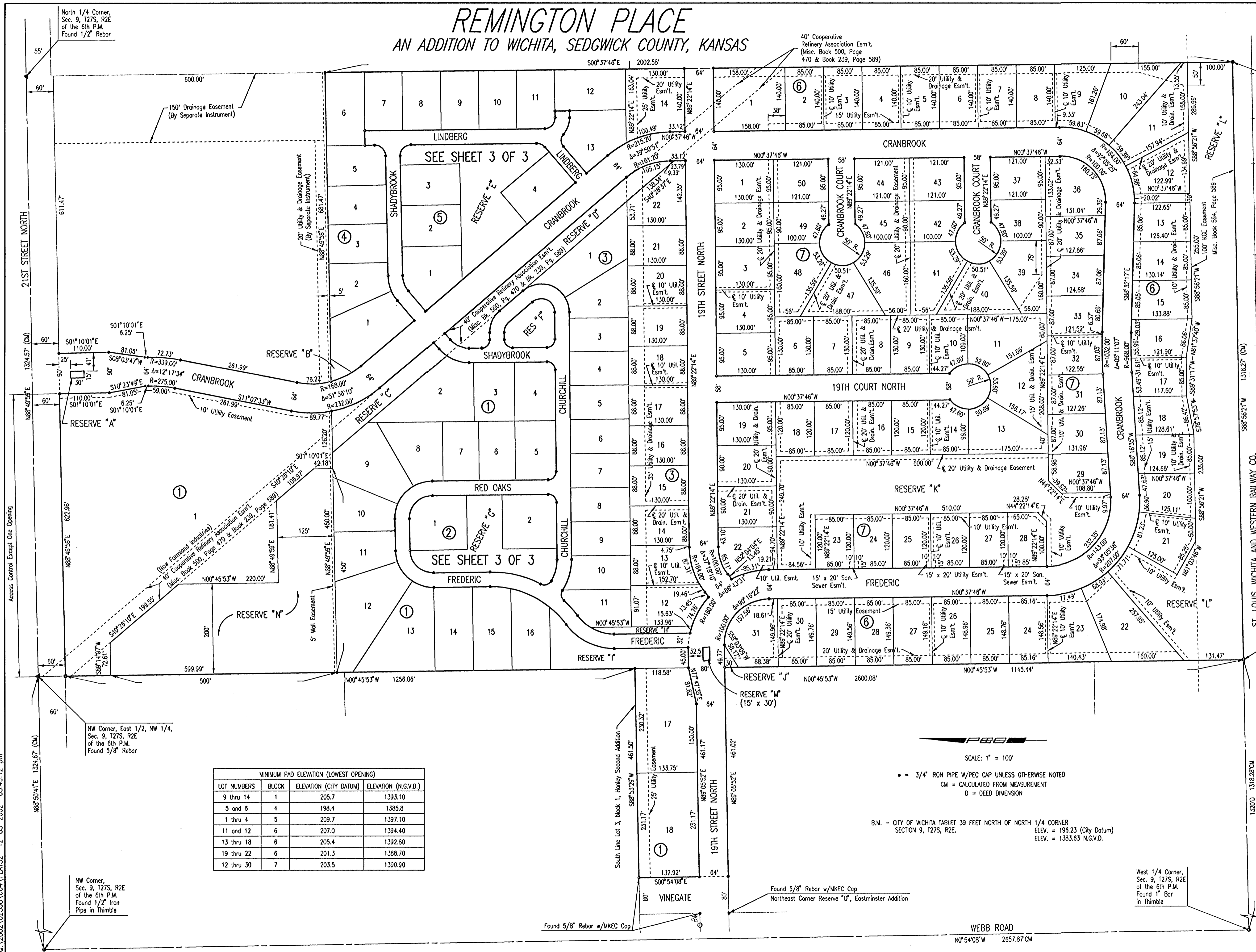


REMINGTON PLACE

AN ADDITION TO WICHITA, SEDGWICK COUNTY, KANSAS

PROJECT NO. 472-83377	SHEET NO. 2	TOTAL SHEETS 23
--------------------------	----------------	--------------------



Center Sec. 9, T27S, R2E of the 6th P.M. Found 1/2" Iron Pipe

SW Corner, East 1/2, NW 1/4, Sec. 9, T27S, R2E of the 6th P.M. Set 3/4" Iron Pipe

MINIMUM PAD ELEVATION (LOWEST OPENING)			
LOT NUMBERS	BLOCK	ELEVATION (CITY DATUM)	ELEVATION (N.G.V.D.)
9 thru 14	1	205.7	1393.10
5 and 6	4	198.4	1385.8
1 thru 4	5	209.7	1397.10
11 and 12	6	207.0	1394.40
13 thru 18	6	205.4	1392.80
19 thru 22	6	201.3	1388.70
12 thru 30	7	203.5	1390.90

SCALE: 1" = 100'
 • = 3/4" IRON PIPE W/PEC CAP UNLESS OTHERWISE NOTED
 CM = CALCULATED FROM MEASUREMENT
 D = DEED DIMENSION

B.M. - CITY OF WICHITA TABLE 39 FEET NORTH OF NORTH 1/4 CORNER SECTION 9, T27S, R2E.
 ELEV. = 198.23 (City Datum)
 ELEV. = 1383.63 N.G.V.D.

REMINGTON PLACE - PHASE 3

PLAT

Professional Engineering Consultants, P.A.
 303 S. TOPEKA • WICHITA, KANSAS 67202
 316-262-2691 • FAX 316-262-3003

Designed by	Checked by
Drawn by DEP	Datg DEC., 2002
Job No. 02398-004	

DSNR: S40 OPER: DEP SCALE: 1"=100.00
 01-2002 02:398 004 PLATS2 12-03-2002 03:49:12 pm