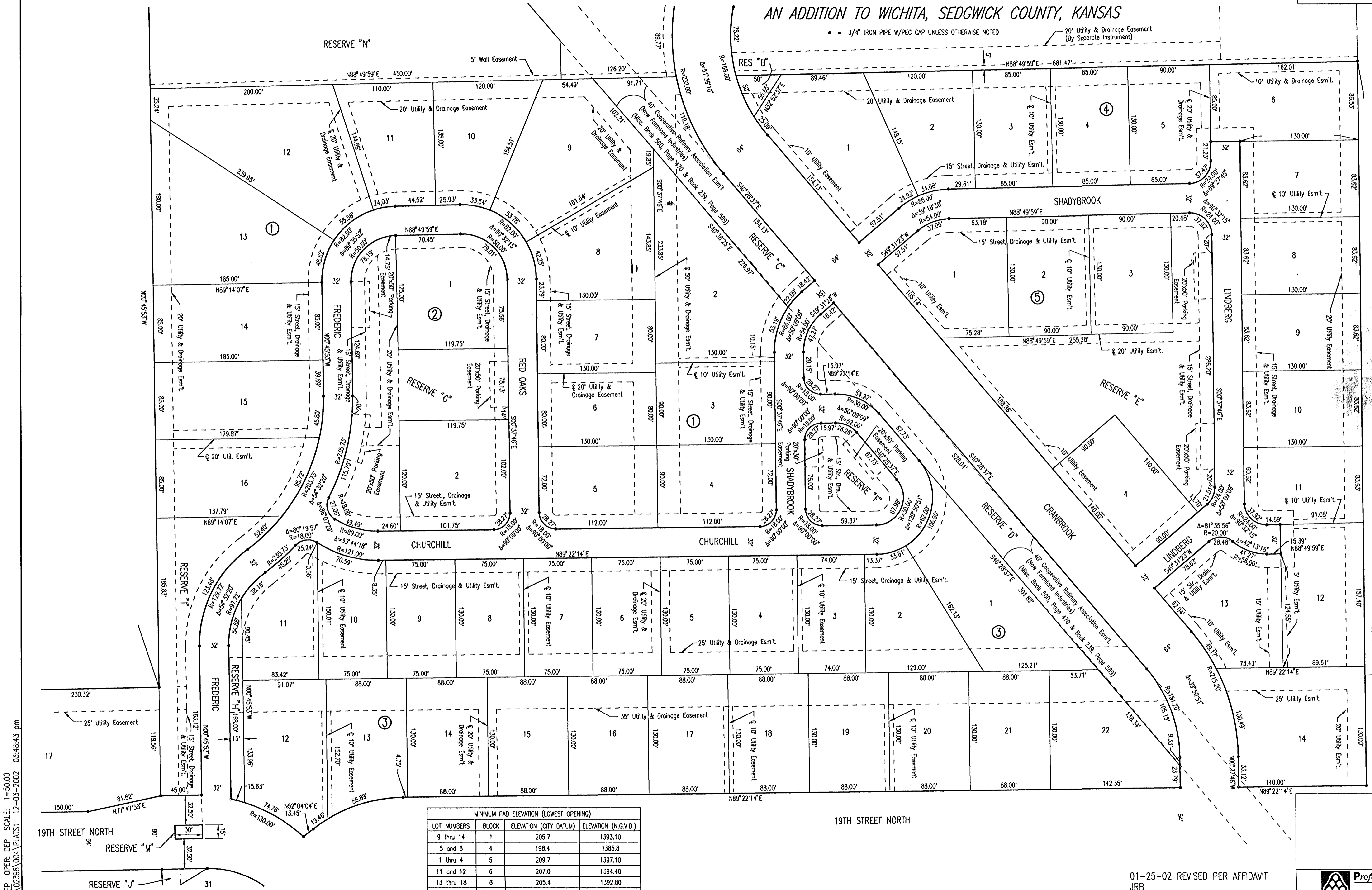


REMINGTON PLACE

AN ADDITION TO WICHITA, SEDGWICK COUNTY, KANSAS

• = 3/4" IRON PIPE W/PEC CAP UNLESS OTHERWISE NOTED
 --- 20' Utility & Drainage Easement (By Separate Instrument)



SCALE: 1" = 50'

MINIMUM PAD ELEVATION (LOWEST OPENING)			
LOT NUMBERS	BLOCK	ELEVATION (CITY DATUM)	ELEVATION (N.G.V.D.)
9 thru 14	1	205.7	1393.10
5 and 6	4	198.4	1385.8
1 thru 4	5	209.7	1397.10
11 and 12	6	207.0	1394.40
13 thru 18	6	205.4	1392.80
19 thru 22	6	201.3	1388.70
12 thru 30	7	203.5	1390.90

REMINGTON PLACE - PHASE 3

PLAT

01-25-02 REVISED PER AFFIDAVIT
JRB

Professional Engineering Consultants, P.A.
 303 S. TOPEKA • WICHITA, KANSAS 67202
 316-262-2691 • FAX 316-262-3003

Designed by	Checked by
Drawn by DEP	Date DEC, 2002
Job No. 02398-004	

DSNR: DEP OPER: DEP SCALE: 1"=50.00
 C:\2002\02398\004\PLATS\ 12-03-2002 03:48:43 pm