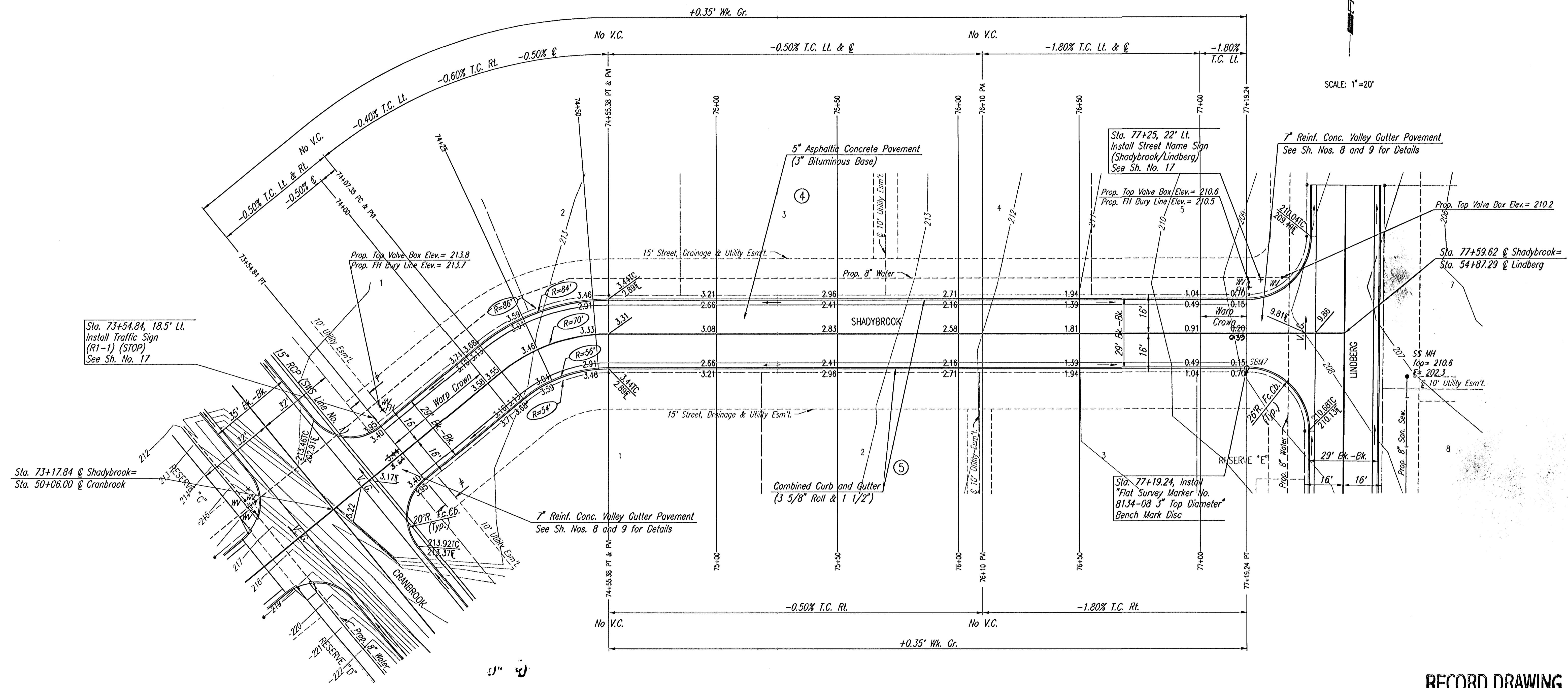


WATER VALVE BOX ELEVATIONS			
STREET	STATION	OFFSET	PROPOSED ELEVATION
SHADYBROOK	73+59.59	21.0' Lt.	213.8
SHADYBROOK	77+20.33	21.0' Lt.	210.6
SHADYBROOK	77+33.83	23.0' Lt.	210.2

SCALE: 1"=20'



Sta. 73+54.84, 18.5' Lt.  
Install Traffic Sign  
(R1-1) (STOP)  
See Sh. No. 17

Sta. 73+17.84 @ Shadybrook=  
Sta. 50+06.00 @ Cranbrook

Sta. 77+19.24, Install  
"Flat Survey Marker No.  
8134-08 3" Top Diameter"  
Bench Mark Disc

CURVE DATA							
Δ=39°18'36"		D=81°51'04"		R=70.00'	L=48.03'	T=25.00'	E=4.33'
CURVE DATA BASED ON C RADIUS Δ/2=19°39'18"							
Q STATION	Q ARC LENGTH	FACE CURB LENGTH		CHORD LENGTH		DEFLECTION ANGLE	Q TOTAL DEFLECTION
		LEFT CURB	RIGHT CURB	8'OFF LEFT FACE CURB	8'OFF RIGHT FACE CURB		
74+07.35						0°00'00"	0°00'00"
74+25	17.65'	21.18'	14.12'	23.14'	12.07'	7°13'24"	7°13'24"
74+50	25.00'	30.00'	20.00'	32.68'	17.05'	10°13'53"	17°27'17"
74+55.38	5.38'	6.45'	4.30'	7.06'	3.69'	2°12'01"	19°39'18"
TOTAL	48.03'	57.63'	38.42'	Def./ft.=24.553404 min.			

NOTE: THIS STREET TO BE CONSTRUCTED WITH ROLL-TYPE CURB. TOP OF CURB ELEVATIONS GIVEN ARE FOR FULL HEIGHT CURB.

≠ 5' TRANSITION FROM COMBINED CURB AND GUTTER 6 5/8" & 1 1/2" TO COMBINED CURB AND GUTTER (3 5/8" ROLL & 1 1/2"). TO BE BID AND PAID FOR AS "COMBINED CURB AND GUTTER (3 5/8" ROLL & 1 1/2)".

**RECORD DRAWING**

24 Nov 03

REMINGTON PLACE - PHASE 3

**SHADYBROOK**  
STA. 73+54.84 TO STA. 77+59.62

**Professional Engineering Consultants, P.A.**  
303 S. TOPKA • WICHITA, KANSAS 67202  
316-262-2691 • FAX 316-262-3003

Designed by	BER	Checked by	
Drawn by	DEP	Date	DEC., 2002
		Job No.	02398-004

DSNR: BRY OPER: DEP SCALE: 1"=20.00  
 C:\2002\02398\004\SHADYBROOKS2 12-03-2002 03:47:21 pm