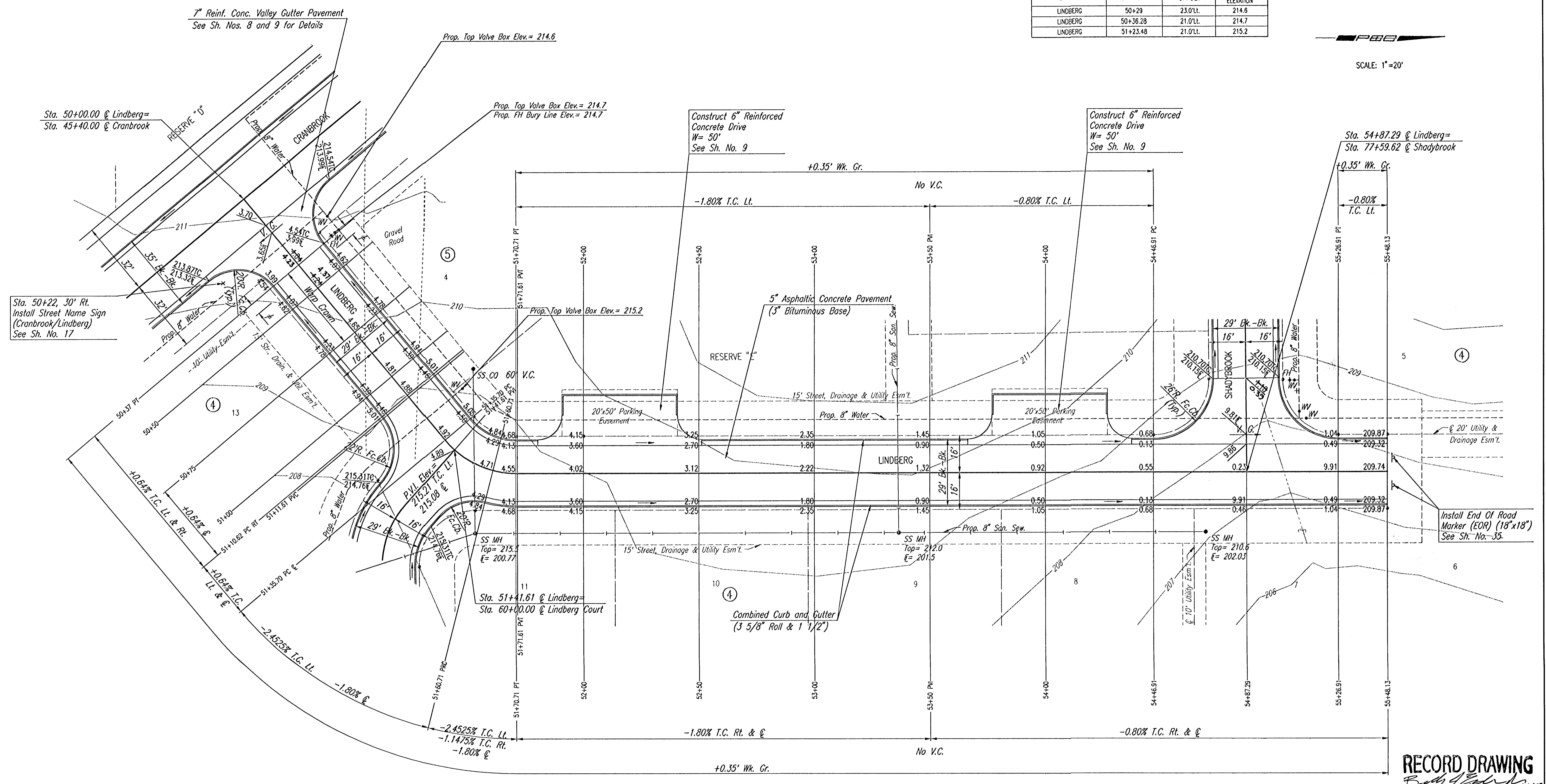


WATER VALVE BOX ELEVATIONS			
STREET	STATION	OFFSET	PROPOSED ELEVATION
LINDBERG	50+29	23.0'LL	214.6
LINDBERG	50+36.28	21.0'LL	214.7
LINDBERG	51+23.48	21.0'LL	215.2

SCALE: 1"=20'



CURVE DATA						
$\Delta=50^{\circ}09'09''$		$D=143^{\circ}14'22''$		$R=40.00'$	$L=35.01'$	$T=18.72'$
$E=4.16'$						
CURVE DATA BASED ON CIRCULAR RADIUS $\Delta/2=25^{\circ}04'34.5''$						
STATION	ARC LENGTH	FACE CURB LEFT	FACE CURB RIGHT	CHORD LENGTH	DEFLECTION ANGLE	TOTAL DEFLECTION
51+35.70					$0^{\circ}00'00''$	$0^{\circ}00'00''$
51+50	14.30'	9.30'	19.31'	6.40'	$10^{\circ}14'30''$	$10^{\circ}14'30''$
51+70.71	20.71'	13.46'	27.96'	9.22'	$14^{\circ}50'04.5''$	$25^{\circ}04'34.5''$
TOTAL	35.01'	22.76'	47.27'			

Defl./Lt.=42.975578 min.

NOTE: THIS STREET TO BE CONSTRUCTED WITH ROLL-TYPE CURB. TOP OF CURB ELEVATIONS GIVEN ARE FOR FULL HEIGHT CURB.

# 5' TRANSITION FROM COMBINED CURB AND GUTTER (3 5/8" ROLL & 1 1/2") TO COMBINED CURB AND GUTTER (6 5/8" & 1 1/2"). TO BE BID AND PAID FOR AS "COMBINED CURB AND GUTTER (3 5/8" ROLL & 1 1/2)".

RECORD DRAWING

LINDBERG  
STA. 50+00.00 TO STA. 55+48.13

Professional Engineering Consultants, P.A.  
303 S. TOPKA • WICHITA, KANSAS 67202  
316-262-2691 • FAX 316-262-3003

Designed by	BER	Checked by	
Drawn by	DEP	Date	DEC., 2002
		Job No.	02398-004

DSNR: SAD OPER: SAD SCALE: 1"=20.00  
 C:\2002\02398\004\LINDBERG\_01-06-2003\_01:32:28.plt