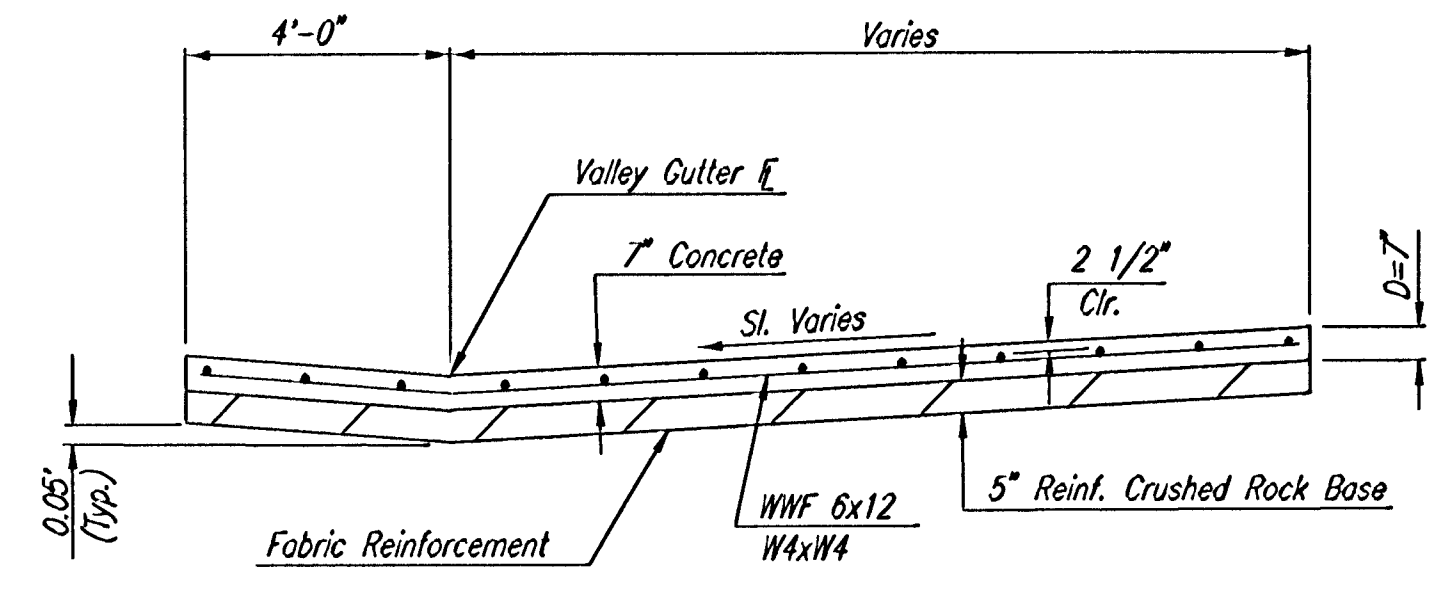


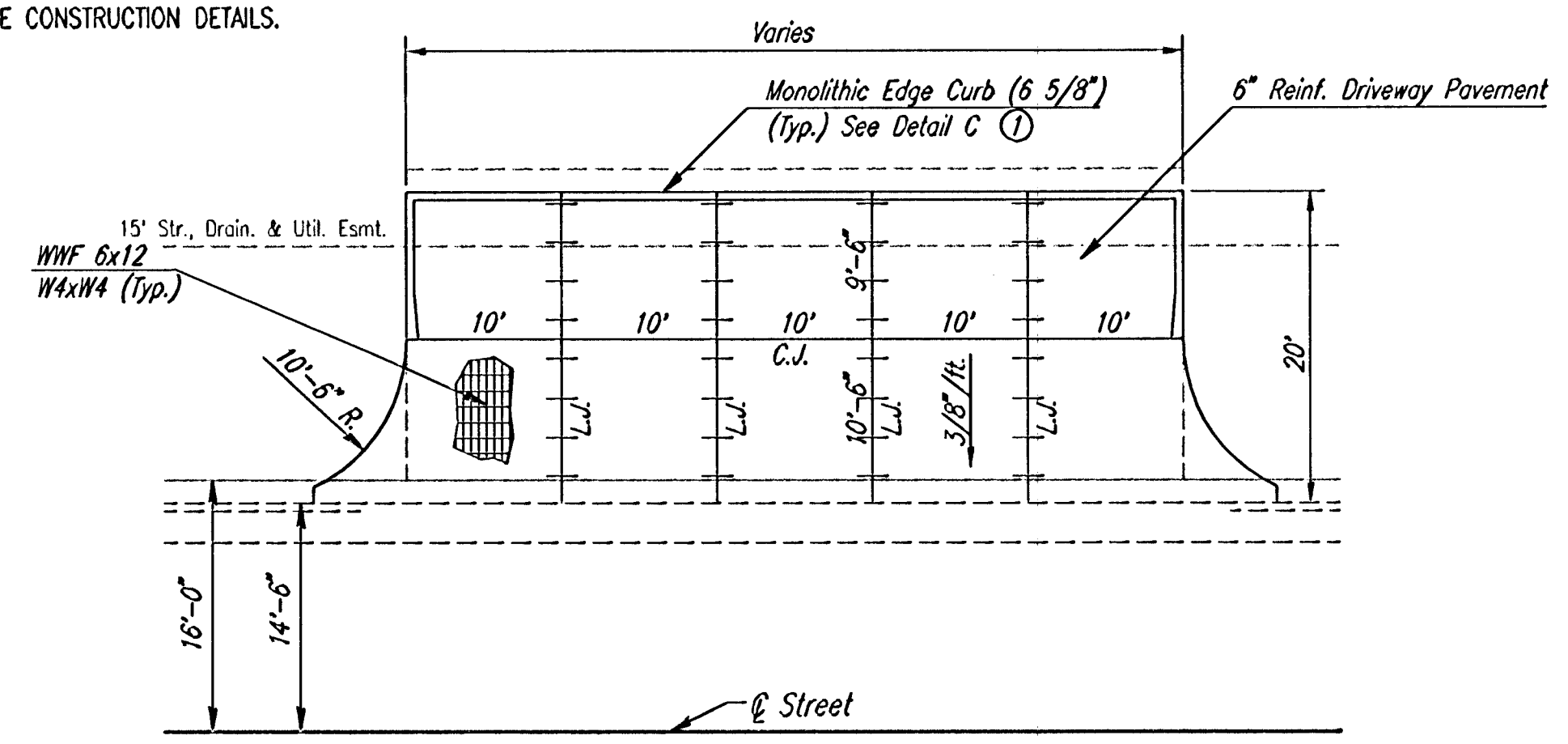
6"x12" W4xW4 WIRE FABRIC REINFORCING SHALL BE PLACED SUCH THAT THE WIRES WITH THE 6" SPACING WILL RUN PARALLEL WITH THE LONGITUDINAL JOINT.

SEE SHEET NO. 10 FOR ADDITIONAL DRIVE CONSTRUCTION DETAILS.



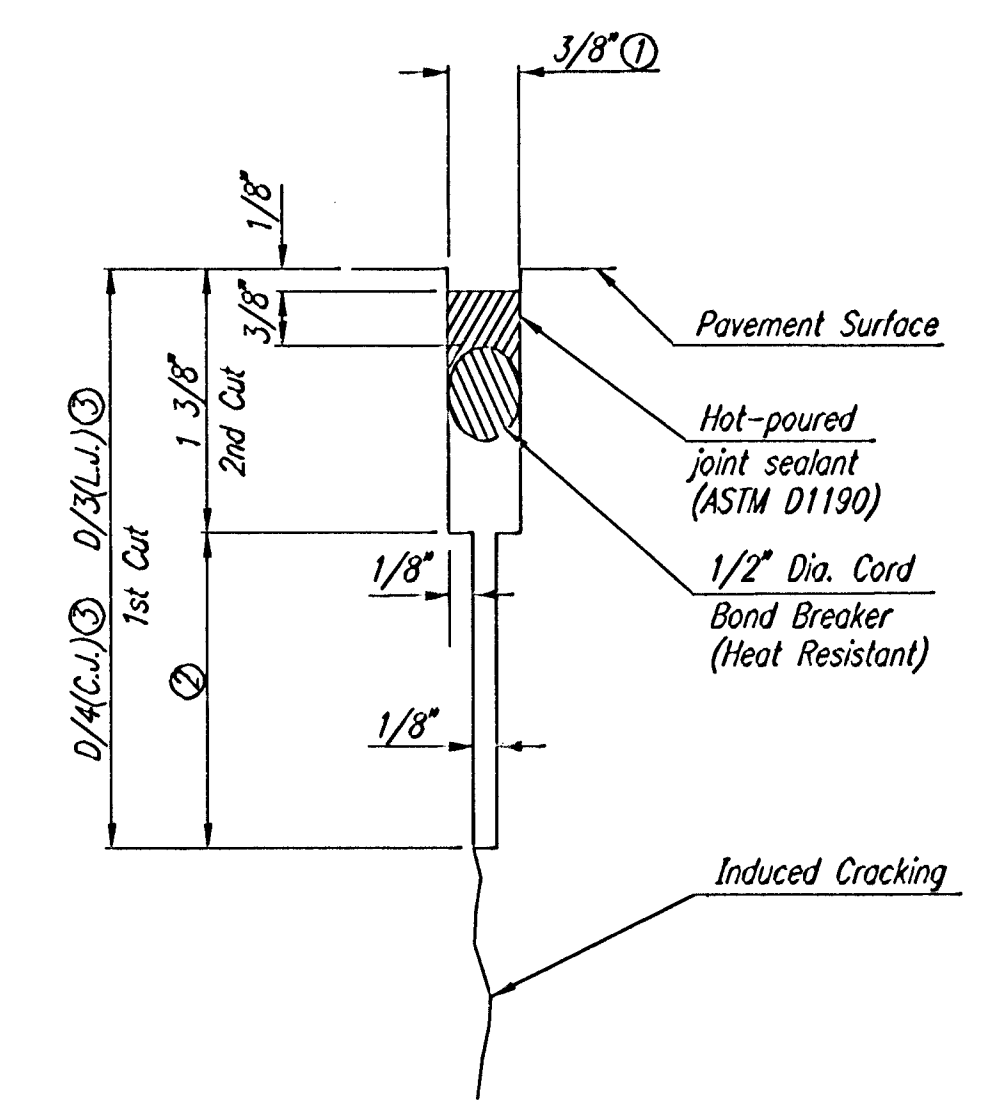
SECTION A-A

NOTE: OMIT REINFORCING MESH AT ALL JOINTS
NOTE: ALL CONCRETE VALLEY GUTTER REINFORCEMENT SHALL BE ADEQUATELY SUPPORTED BY BAR CHAIRS IN THE REQUIRED POSITION UNLESS APPROVED OTHERWISE BY THE ENGINEER.



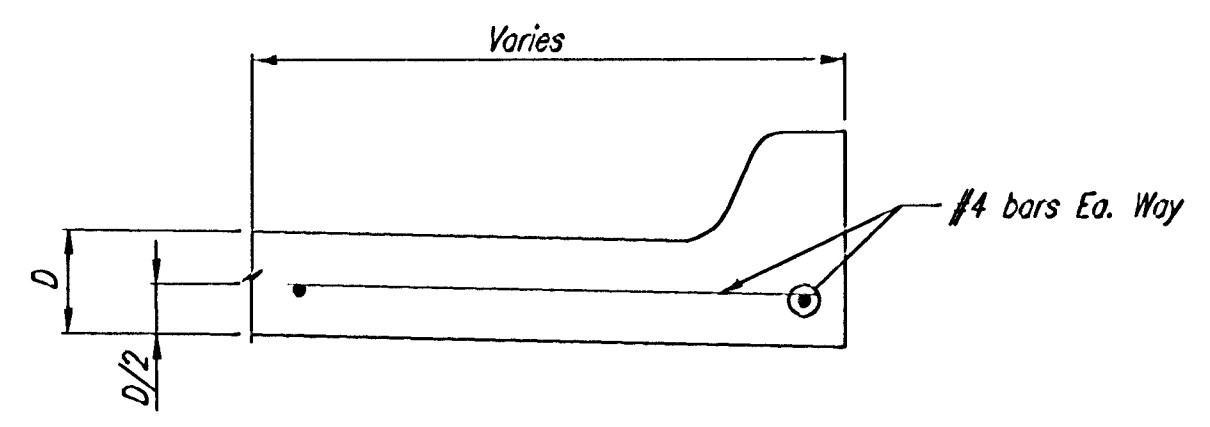
DRIVEWAY DETAILS

① MONOLITHIC EDGE CURB SHALL BE SUBSIDIARY TO 6" DRIVEWAY CONCRETE PAVEMENT.

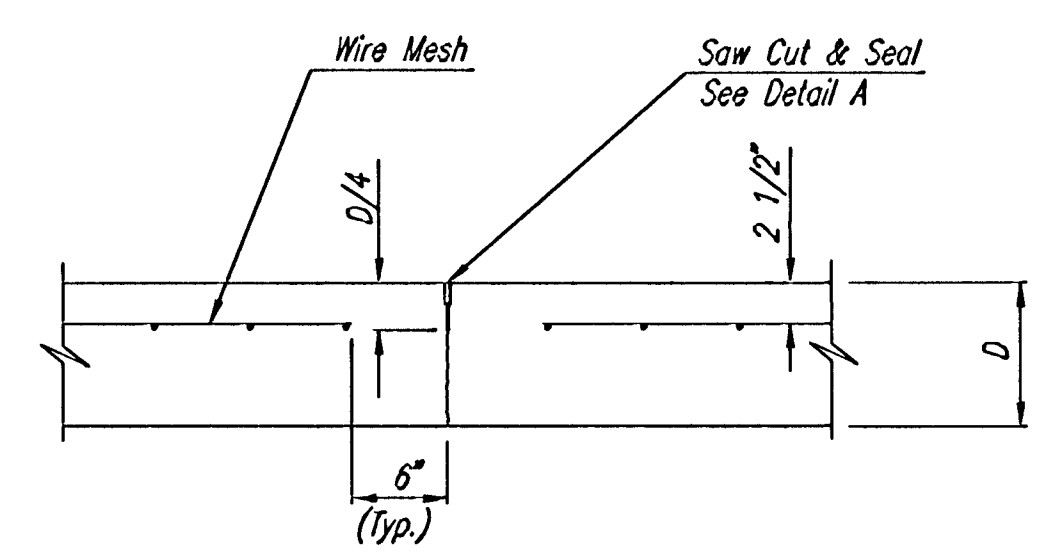


DETAIL A

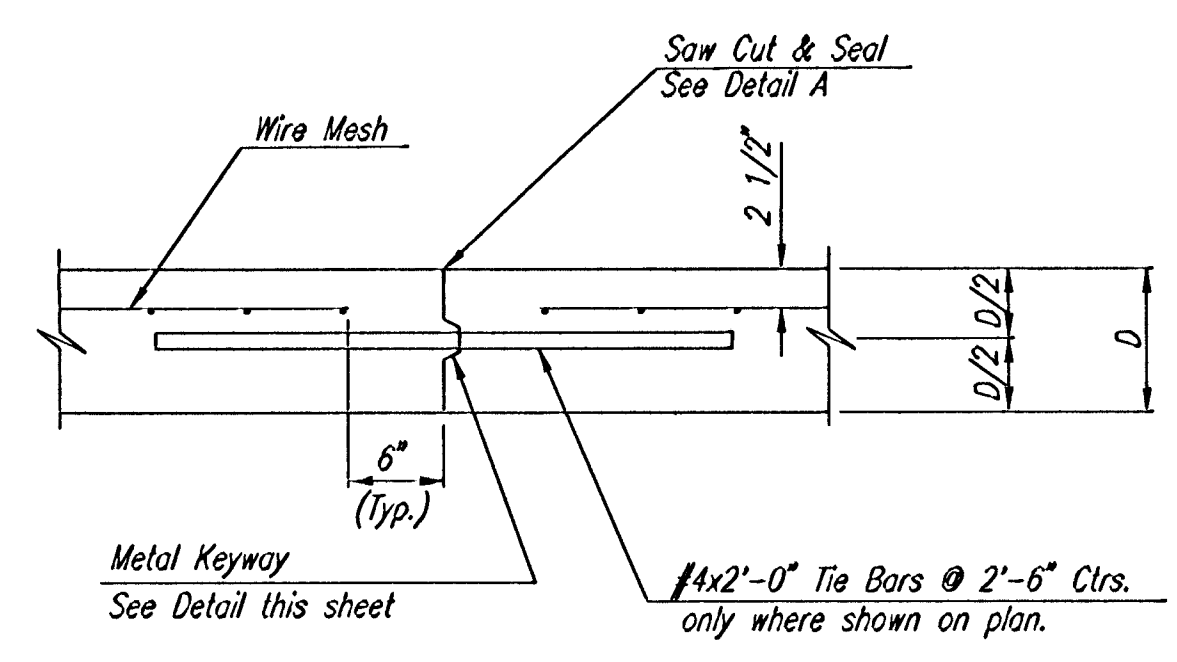
- ① To be accomplished in 2 cuts for Longitudinal Joints and Contraction Joints. Initial cut to be 1/8" wide.
- ② Eliminate bottom of cut when metal keyway is used as part of Longitudinal or Transverse Construction Joint and at Doweled Construction Joint Locations.
- ③ 1 1/2" Minimum



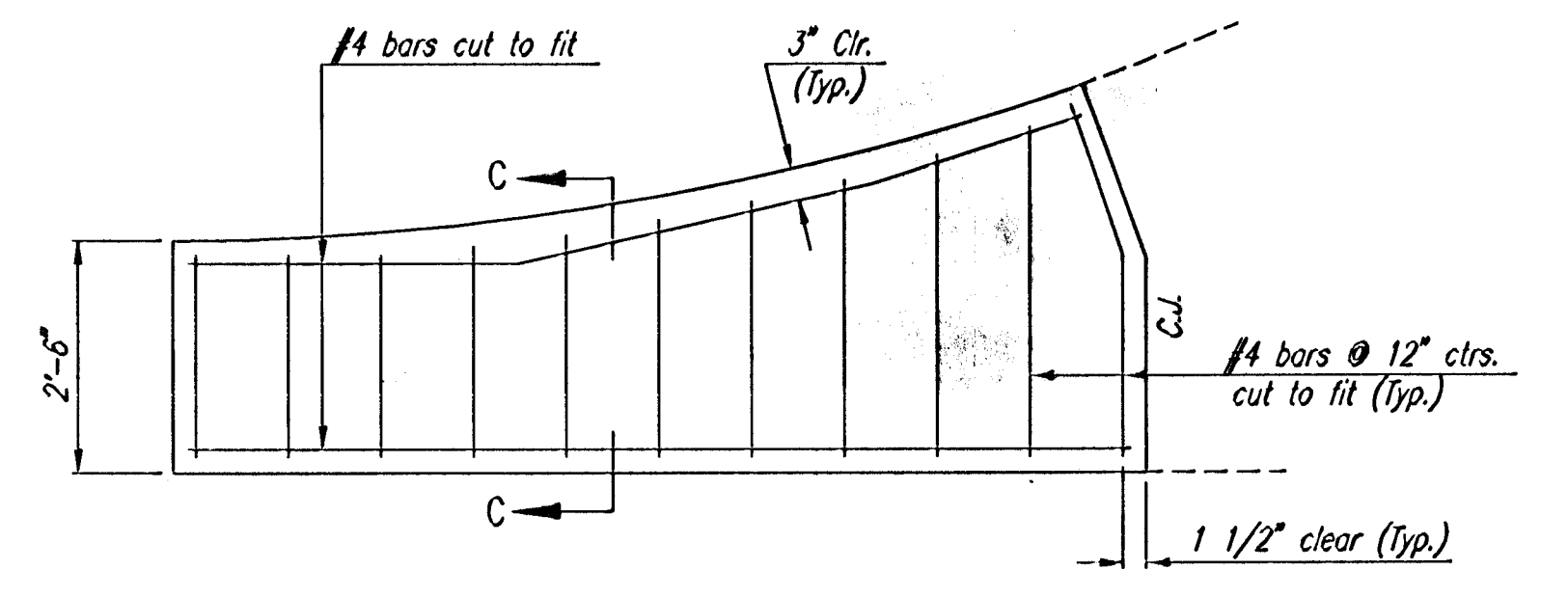
SECTION C-C (MONOLITHIC EDGE CURB)



CONTRACTION JOINT DETAIL REINFORCED PAVEMENT (C.J.)

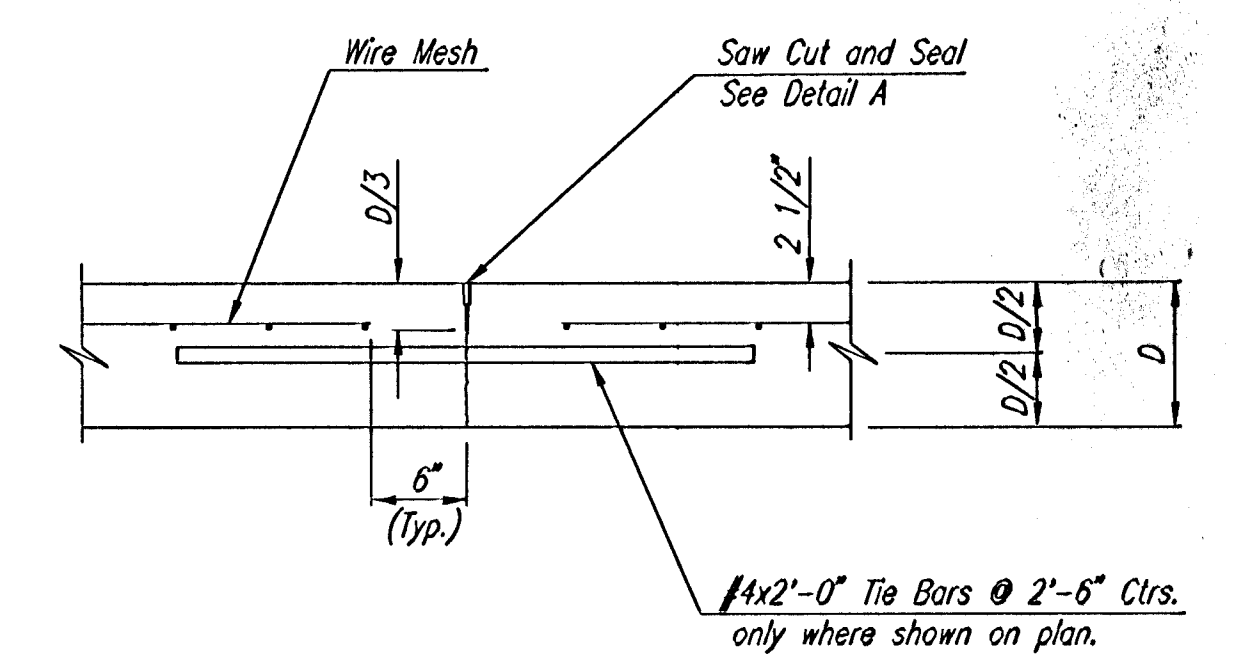


LONGITUDINAL CONSTRUCTION JOINT DETAIL REINFORCED PAVEMENT (TRANSVERSE SECTION) (ALTERNATE L.J.)

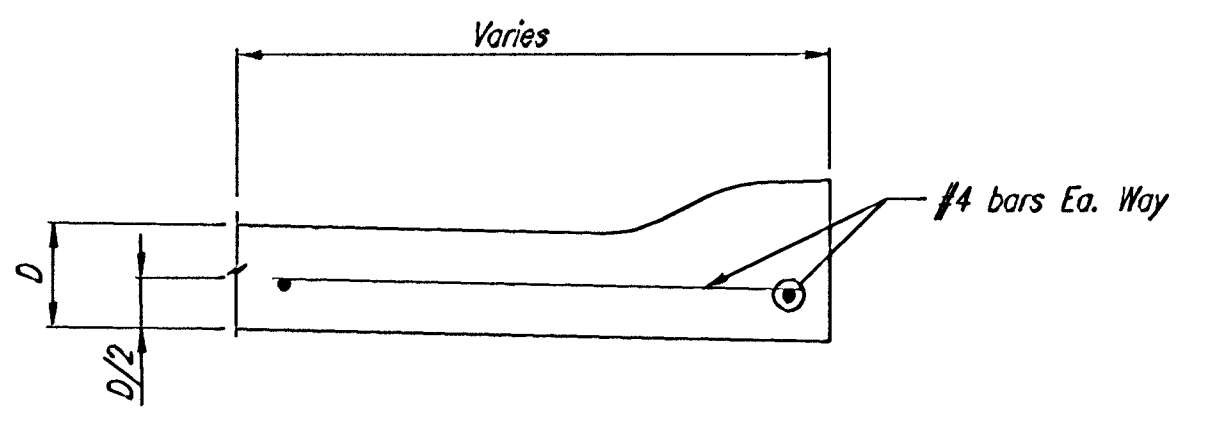


WING REINFORCING DETAIL

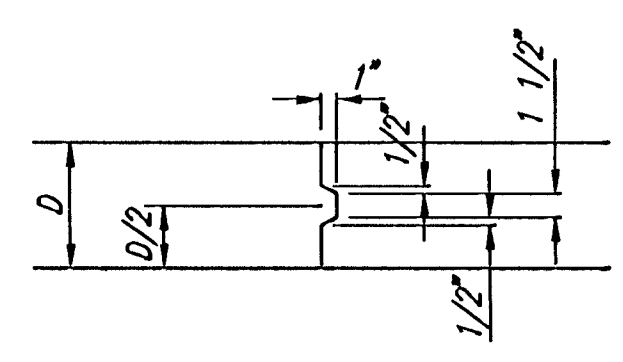
NOTE: OMIT WIRE FABRIC REINFORCING IN THIS SECTION.



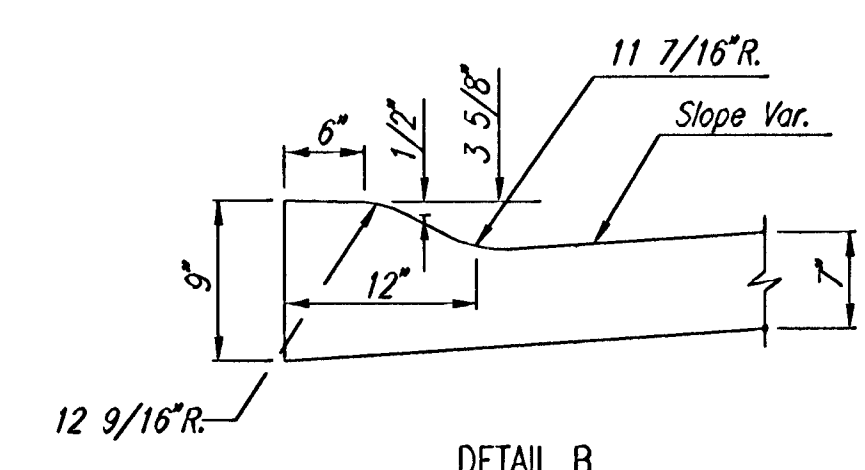
LONGITUDINAL JOINT DETAIL REINFORCED PAVEMENT (TRANSVERSE SECTION) (L.J.)



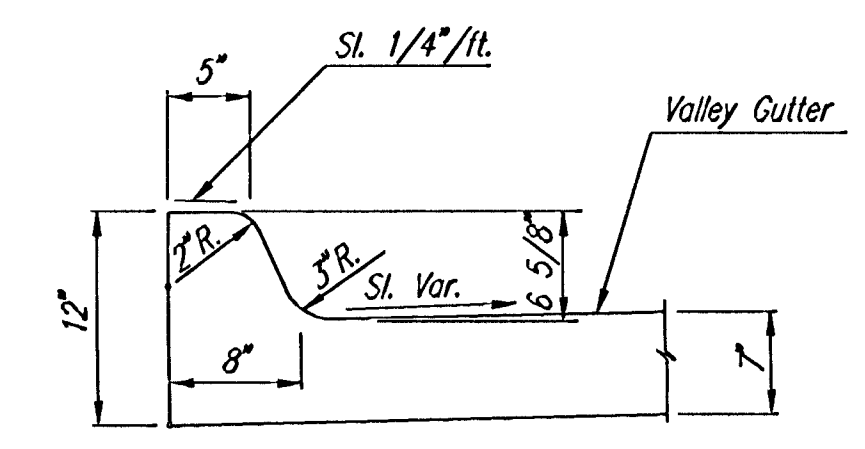
SECTION C-C (ROLL-TYPE CURB)



KEYWAY DETAIL



DETAIL B (ROLL-TYPE CURB)



DETAIL B

RECORD DRAWING
3/11/03

REMINGTON PLACE - PHASE 3
VALLEY GUTTER AND 6" REINF. CONCRETE DRIVE DETAILS

Professional Engineering Consultants, P.A.
303 S. TOPEKA • WICHITA, KANSAS 67202
316-262-2691 • FAX 316-262-3003
Designed by BER Checked by
Drawn by DEP Date DEC., 2002 Job No. 02398-004

DSNR: RRY OFER: DEP SCALE: 1=10.00
C:\2002\02398\004\VALGUTD.L3 12-03-2002 03:45:28 pm