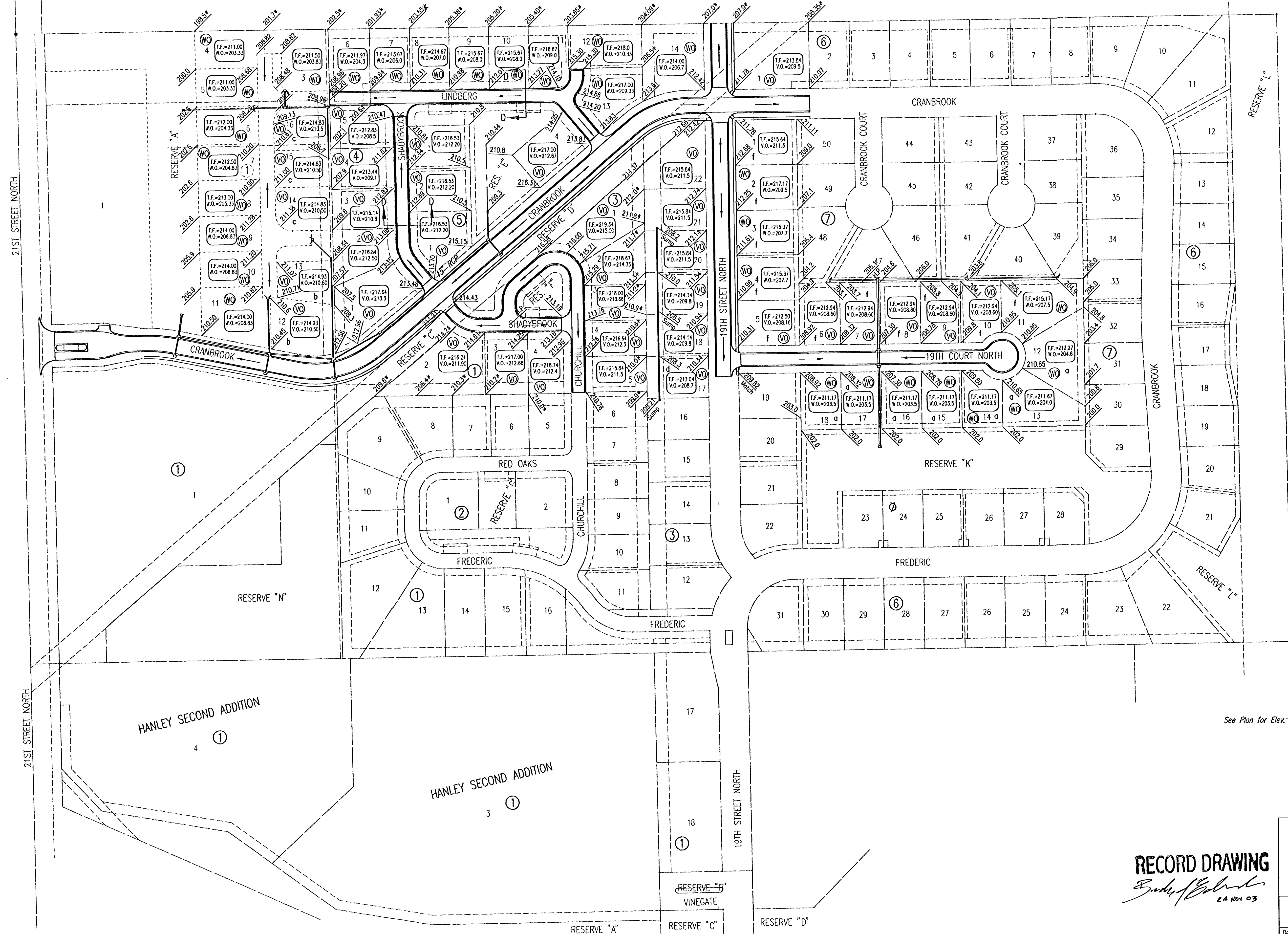


REMINGTON PLACE
AN ADDITION TO WICHITA, SEDGWICK COUNTY, KANSAS

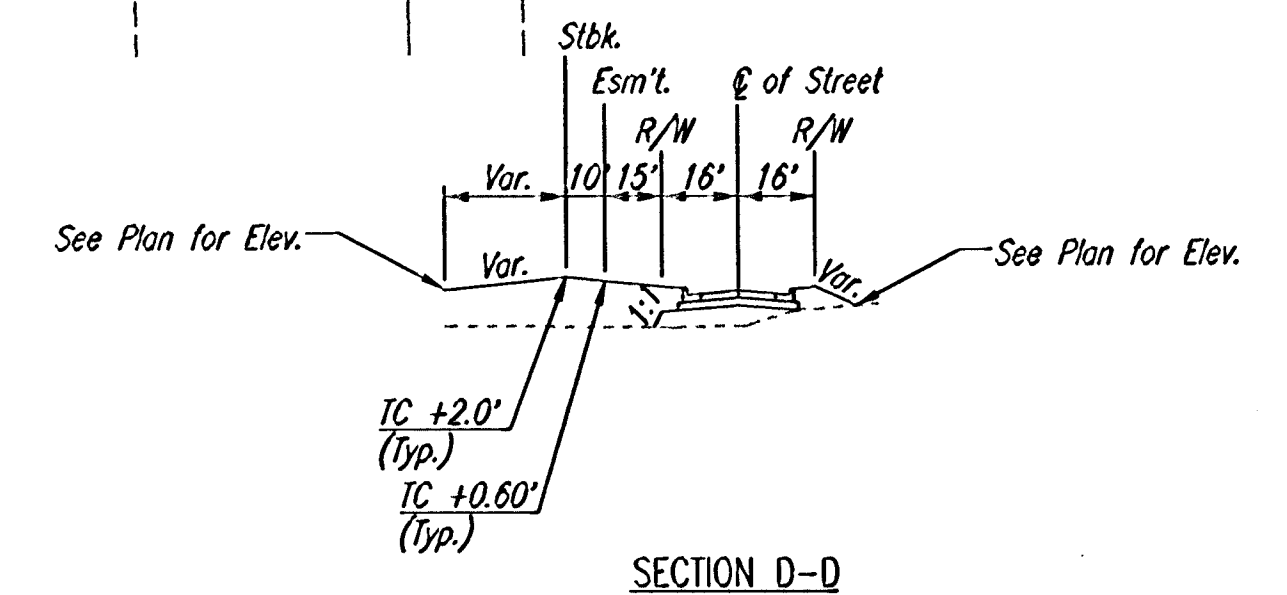
SCALE: 1" = 100'



- a MINIMUM OPENING= 203.5
- b MINIMUM OPENING= 210.6
- c MINIMUM OPENING= 210.5
- d MINIMUM OPENING= 208.7
- f MINIMUM OPENING= 207.5

- (X) STD. BASEMENT
- (VO) VIEW-OUT BASEMENT
- (WC) WALK-OUT BASEMENT
- * Match existing

ST. LOUIS, WICHITA AND WESTERN RAILWAY CO.
NOW BURLINGTON NORTHERN - SANTA FE



SECTION D-D
REMINGTON PLACE - PHASE 3

RECORD DRAWING
Budy of Eberhard
24 NOV 03

FOUR CORNER LOT GRADING

Professional Engineering Consultants, P.A.
303 S. TOPEKA • WICHITA, KANSAS 67202
316-262-2691 • FAX 316-262-3003

Designed by BER	Checked by
Drawn by SAW	Date DEC, 2002
Job No. 02398-004	

DSNR: SAD OPER: DEP SCALE: 1=100.00
CA: 200210239810044CORNER 12-03-2002 03:44:38 pm