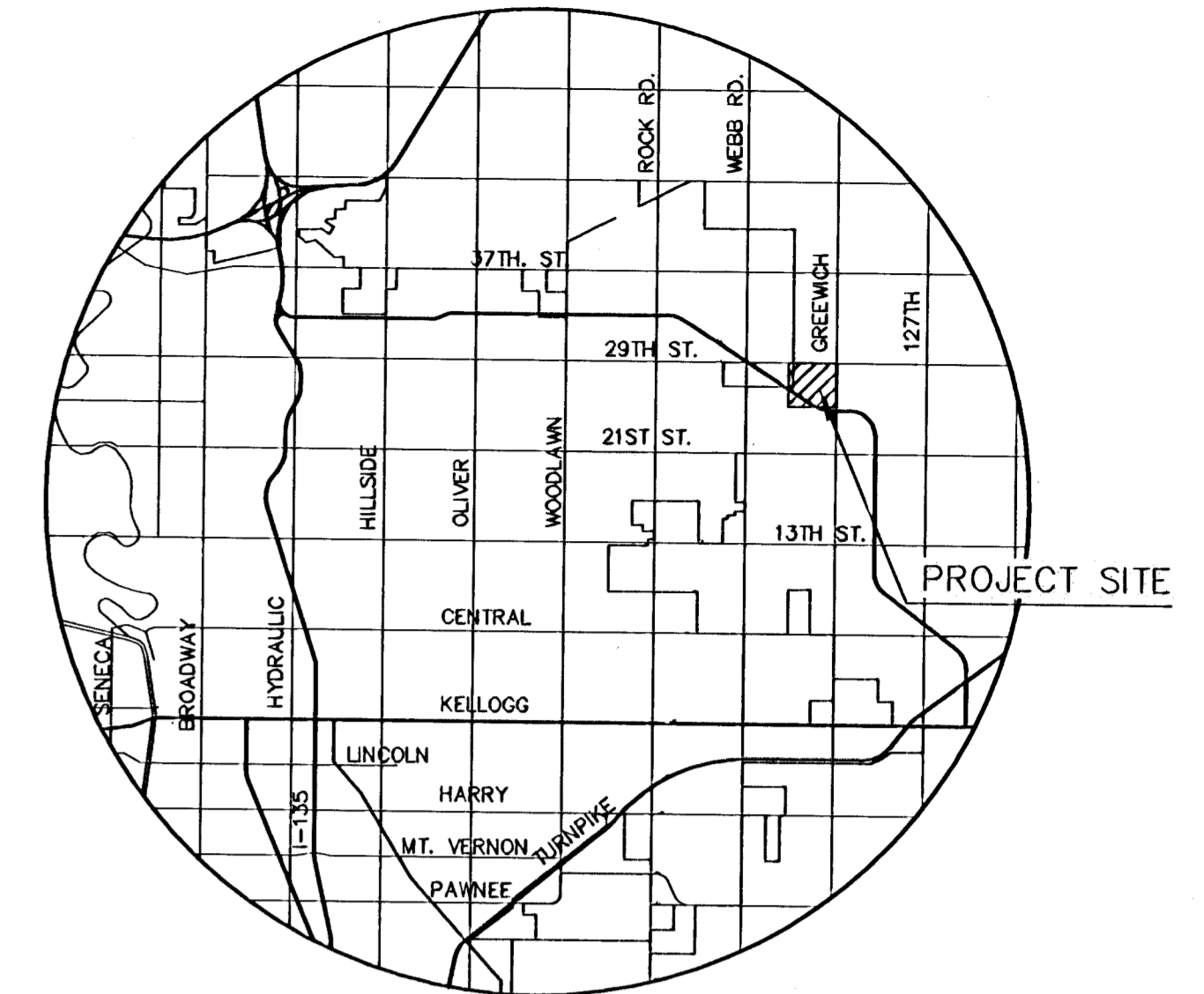


PAVING AND SANITARY SEWER IN
REGENCY PARK

AN ADDITION TO THE CITY OF WICHITA
 SEDGWICK COUNTY, KANSAS
 PROJECT NO. 472-83802

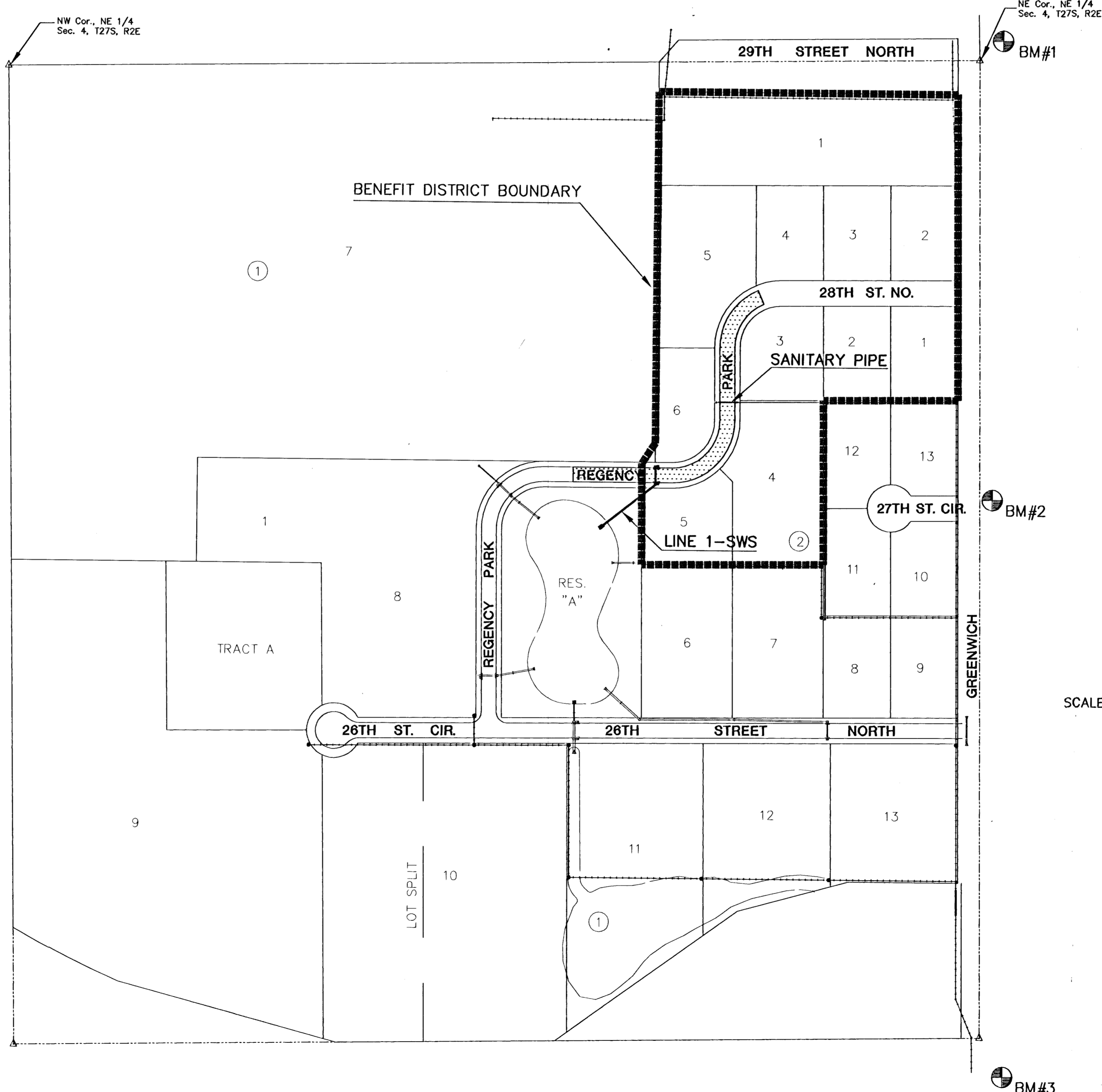
NEIL D. CABLE, P.E. - CITY ENGINEER
 OCA 765807

**REGENCY PARK: FROM 190' WEST OF THE W. LINE OF LOT 5,
 BLOCK 2 TO THE WEST LINE OF LOT 4, BLOCK 1**



GENERAL NOTES

- UNLESS SHOWN OR STATED OTHERWISE ON THESE DRAWINGS, MATERIALS AND CONSTRUCTION SHALL BE IN ACCORDANCE WITH CITY OF WICHITA CONCRETE PAVEMENT AND ASPHALTIC CONCRETE PAVEMENT SPECIFICATIONS.
- CONTRACTOR WILL BE REQUIRED TO PROVIDE A MINIMUM ADVANCE NOTICE OF FORTY-EIGHT (48) HOURS TO UTILITY COMPANIES PRIOR TO STARTING ANY EXCAVATION AS FOLLOWS:
 KANSAS ONE-CALL 1-800-344-7233
 OR 687-2470 (LOCAL WICHITA)
- THE CONTRACTOR MUST NOTIFY THE FOLLOWING IN CASE OF AN EMERGENCY:
 SBC (TELEPHONE) 800-870-8390
 COX COMMUNICATIONS (CABLE) 262-0661
 WESTAR (ELECTRIC) 383-8600
 KANSAS GAS SERVICE (GAS) 832-3101
 CITY OF WICHITA WATER & SEWER MAINT. 262-6000
 AQUILA (GAS) 946-0096
- THE CONTRACTOR SHALL BE RESPONSIBLE FOR PRESERVING PROPERTY IRONS. THE CONTRACTOR WILL BE REQUIRED TO RE-ESTABLISH ANY PROPERTY IRONS WHICH ARE DAMAGED OR DESTROYED BY HIS CONSTRUCTION OPERATIONS. SUCH IRONS SHALL BE RE-ESTABLISHED BY A LICENSED LAND SURVEYOR IN ACCORDANCE WITH STATE LAWS.
- EXISTING UTILITIES AND THEIR LOCATIONS, AS SHOWN ON THE PLANS REPRESENT THE BEST INFORMATION OBTAINABLE FOR DESIGN. LOCATION INFORMATION HAS BEEN OBTAINED FROM THE VARIOUS UTILITY COMPANIES AND IS EITHER FROM COMPANY RECORD DRAWINGS OR COMPANY PROVIDED FIELD LOCATIONS. THE PLAN LOCATIONS SHOWN ARE NOT GUARANTEED. ADDITIONAL EXISTING UTILITIES MAY ALSO BE ENCOUNTERED.
- RUBBLE FROM THE REMOVAL OF MISCELLANEOUS STRUCTURES AND EXCESS EXCAVATION WHICH IS TO BE WASTED SHALL BE DISPOSED OF ON SITES TO BE PROVIDED BY THE CONTRACTOR. THESE SITES SHALL BE APPROVED BY THE ENGINEER AS TO SUITABILITY, APPEARANCE AND SITE LOCATION. LOCATIONS THAT, IN THE OPINION OF THE ENGINEER, WILL LEAVE AN UNSIGHTLY APPEARANCE WILL NOT BE APPROVED. ALL DISPOSAL SITES MUST BE APPROVED BY THE KANSAS DEPARTMENT OF HEALTH AND ENVIRONMENT. MATERIAL EITHER STOCKPILED OR DISPOSED OF IN A FLOOD PLAIN WOULD REQUIRE A KANSAS STATE BOARD OF AGRICULTURE PERMIT. ANY MATERIAL DUMPED IN WATERS OF THE UNITED STATES OR WETLANDS IS SUBJECT TO U.S. CORPS OF ENGINEERS PERMITTING REGULATIONS. ANY MATERIAL BURIED OR STOCKPILED BEYOND APPROVED CONSTRUCTION LIMITS WOULD REQUIRE ADDITIONAL ARCHAEOLOGICAL INVESTIGATIONS UNLESS BURIED IN A PREVIOUSLY APPROVED BORROW LOCATION.
- TRANSITION CURB FROM FULL HEIGHT COMBINATION CURB AND GUTTER TO ROLL TYPE COMBINATION CURB AND GUTTER IS TO BE PAID AS BID FOR LINEAL FEET COMBINED CURB AND GUTTER (3 5/8" ROLL).
- A SAW CUT OF AT LEAST ONE-HALF THE DEPTH OF THE EXISTING SURFACE COURSES OR ONE-FOURTH THE DEPTH OF THE EXISTING TOTAL PAVEMENT THICKNESS SHALL BE PROVIDED AT LOCATIONS WHERE PROPOSED CONSTRUCTION ADJUTS AN EXISTING SURFACE OR PAVEMENT FOR WHICH PARTIAL REMOVAL OF THAT SURFACE OR PAVEMENT IS REQUIRED. SAW JOINT TO FACILITATE REMOVAL WITHIN THREE (3) FEET OF EXISTING JOINTS WILL NOT BE PERMITTED AND FOR SUCH INSTANCES THE LIMITS OF REMOVAL SHALL EXTEND TO THE EXISTING JOINT. SUCH SAW CUTS WILL NOT BE PAID FOR DIRECTLY AND THIS COST SHALL BE CONSIDERED AS SUBSIDIARY TO THE REMOVAL OF SURFACE OR PAVEMENT.
- CONTRACTOR SHALL SEED AND MULCH ALL DISTURBED AREAS WITH AN ANNUAL RYE GRASS AT A RATE OF 200 LBS/ACRE. COST SHALL BE SUBSIDIARY TO BID ITEM (BMP).



INDEX TO DRAWINGS

| SHEET NO. | DESCRIPTION |
|-----------|---------------------|
| 1 | TITLE SHEET |
| 2 | TYPICAL SECTION |
| 3 | SIGNING DETAILS |
| 4-5 | INLET DETAILS |
| 6-7 | REGENCY PARK PAVING |
| 8 | STORM SEWER PLAN |
| 9-12 | BMP DETAILS |
| 13-14 | CROSS SECTIONS |
| 15-16 | FINAL PLAT |

BENCHMARKS

- BM#1 BM Step Spike in West side PP, 1st. pole North of 29th. St. on East side Greenwich Rd. Elev.=201.51
- BM#2 BM Step Spike in West side PP, 6th. pole North of K-96 on East side Greenwich Rd. Elev.=192.04
- BM#3 BM Step Spike in West side PP, 1st. pole North of K-96 on East side Greenwich Rd. Elev.=184.45

SCALE: 1" = 200'



| REGENCY PARK | |
|-------------------|-----------------------|
| LENGTH OF PROJECT | 41' BK.-BK. 886.2 FT. |
| EARTHWORK SUMMARY | |
| EXCAVATION | 2884 C.Y. |
| LOOSE FILL | 142 C.Y. |

MKEC ENGINEERING CONSULTANTS
 411 N. WEBB ROAD
 WICHITA, KS. 67206
 316-684-9600

REGENCY PARK
 PROJECT NAME

PAVING PLANS - PHASE 2
 SHEET TITLE

| | | |
|------------------------|--------------------------|-------------------------|
| DESIGN BY: DFL | DRAWN BY: KKL | CHECKED BY: DFL |
| DATE: JULY 2003 | JOB NO.: 03211_ET | SHEET/OF: 1 / 16 |