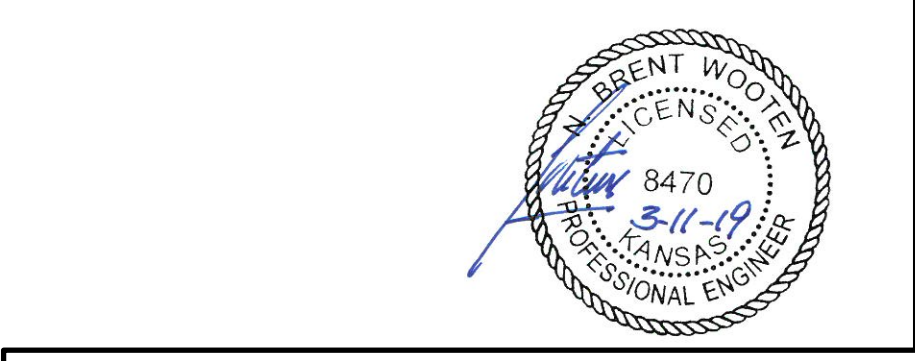
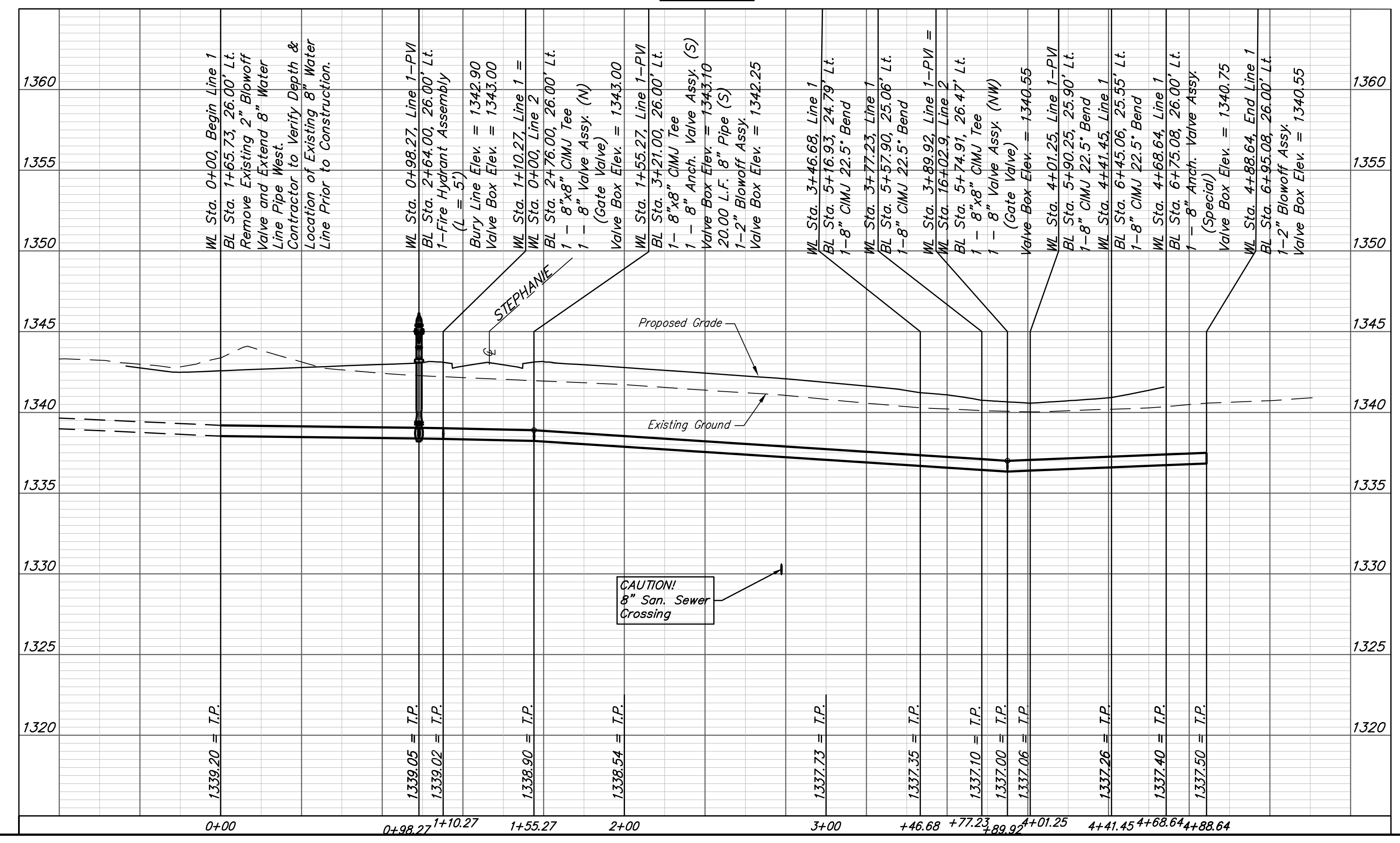
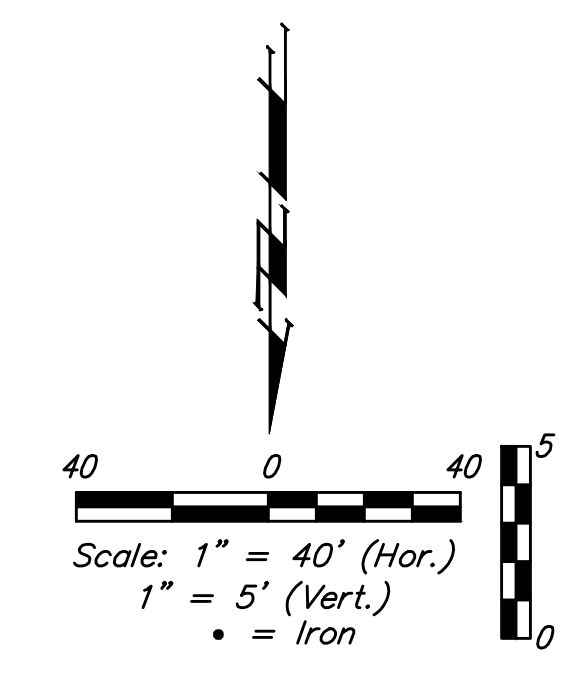
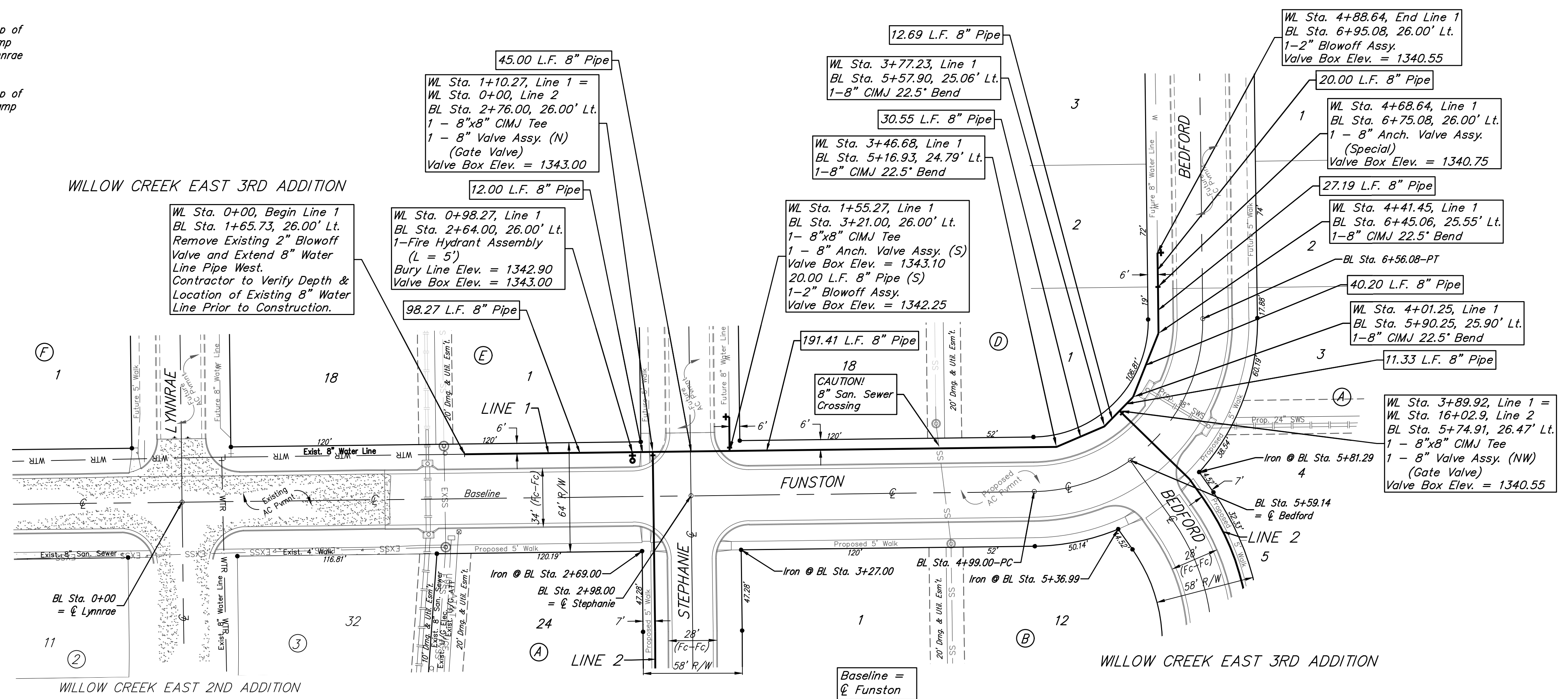


BENCHMARKS:
 Brass benchmark disc in top of curb, east of wheelchair ramp NE cor. of Funston and Lynnrae Elev. = 1343.69 NAVD88
 Brass benchmark disc in top of curb, north of wheelchair ramp NW cor. of Funston and Herrington Elev. = 1344.71 NAVD88



Baughman Willow Creek East 3rd Addition - Phase I
LINE 1
 Water Distribution System

Baughman Company, P.A. 315 Ellis St. Wichita, KS 67211 P 316-262-7271 F 316-262-0149
 ENGINEERING | SURVEYING | PLANNING | LANDSCAPE ARCHITECTURE

PROJECT NUMBER 448-90408	DESIGN NBW	DRAWN JAK
REVISIONS:	APPROVED	DATE 3/08/19
	SCALE Noted	SHEET 4 OF 15

E:\Projects\Willow Creek East 3rd Addition_17047283\Engineering\Phase I\WTR_18-11E120\WTR PLANS