

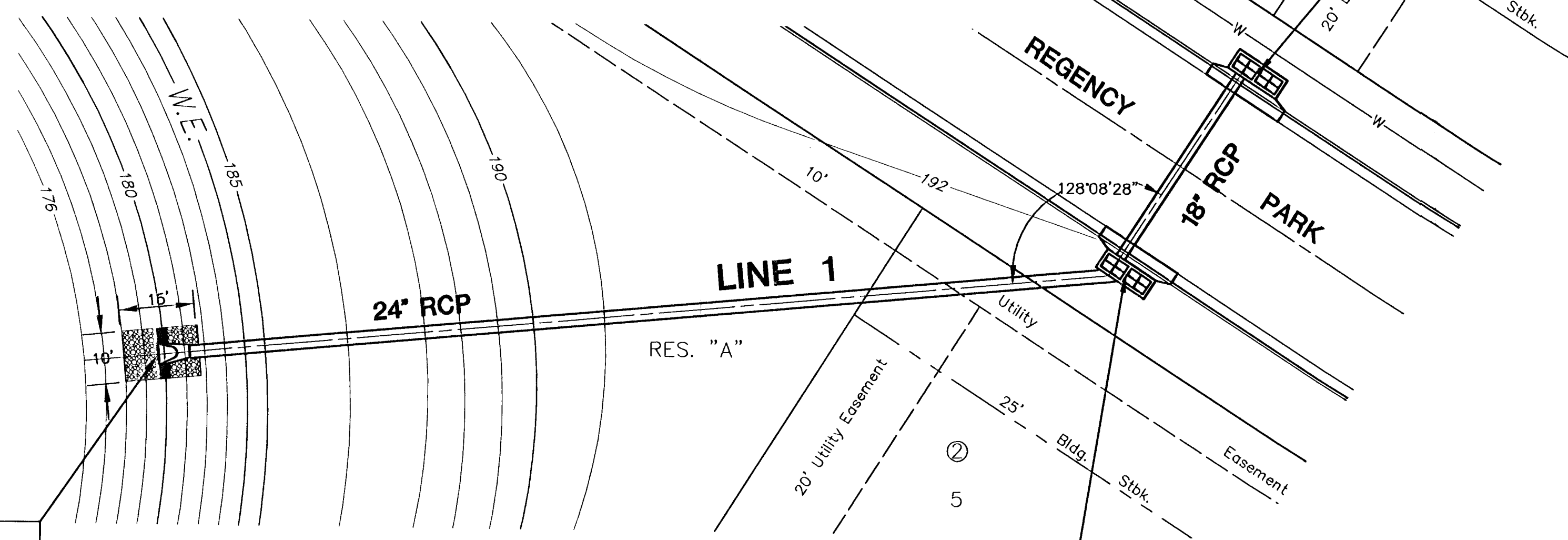
**OVERFLOW PATH FOR EXTREME FLOOD EVENTS**

No grading modifications are allowed between inlets and the detention pond. This area must also be kept clear of any structures, heavy brush or other materials that could impede overflow from heavy rainfall/runoff events.

STA. 10+19.2, LINE 1=  
ST. STA. 39+41.12, 127.8' RT.  
CONST. 24" END SECTION  
WITH 17 S.Y. LIGHT STONE  
RIP RAP AND GROUTED  
TOE WALL (L=10' W=2' D=4')

STA. 12+10.2, LINE 1=  
ST. STA. 41+00, 23.7' RT.  
CONST. STD. TYPE 1A  
CURB INLET (10'x3')  
WITH PAVEMENT UNDERDRAIN  
(PROVIDE SEDIMENT BARRIER)

STA. 12+57.6, LINE 1=  
ST. STA. 41+00, 23.7' LT.  
CONST. STD. TYPE 1A  
CURB INLET (10'x3')  
WITH PAVEMENT UNDERDRAIN  
(PROVIDE SEDIMENT BARRIER)  
INSTALL 18"x5' STUB, NORTH



**PLAN LINE 1**

**PROFILE LINE 1**

SCALE: HORIZ. 1"=20'  
SCALE: VERT. 1"=5'

