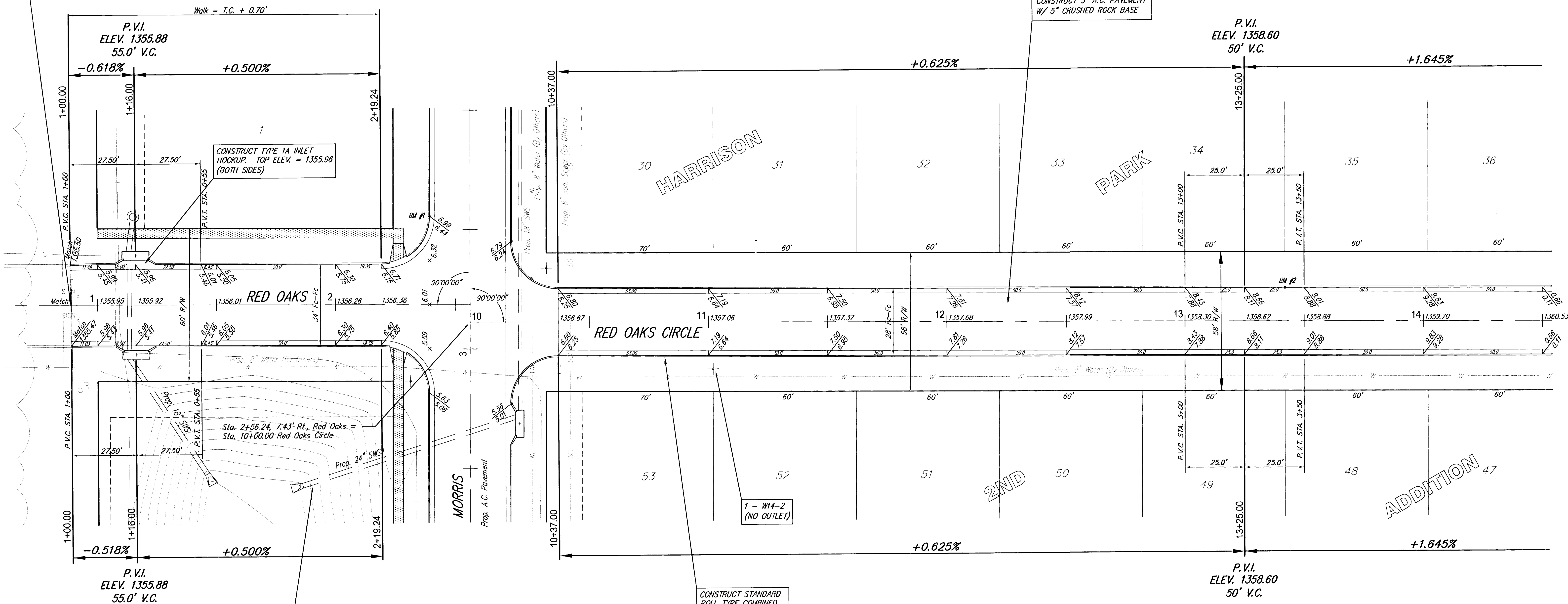


Subdivision Bench Marks

No.	Street and Station	From CL	Description	Elevation
1	Morris, Sta. 2+44	17.50' Rt	W End of SW Curb Return at the Intersection of Morris and Red Oaks.	
2	Red Oaks Circle, Sta. 13+42	14.50' Lt	N. Line of Lot 34, W. Side of Red Oaks Circle; approx. 342' N. of the $\phi$ of Morris.	

STA. 0+88.90 SAWCUT EXIST PAVEMENT TO NEAT LINE. BEGIN A.C. PAVEMENT. REMOVE EXISTING E.O.R. BARRICADE.

CONSTRUCT 5" A.C. PAVEMENT W/ 5" CRUSHED ROCK BASE



CONSTRUCT STANDARD ROLL TYPE COMBINED CURB AND GUTTER (3' 5/8") and (1' 1/2")

INCIDENTAL DRAINAGE SEE SHEET ---



SCALE 1" = 20'  
IRON = •

NOTE: ROLL-TYPE CURB TO BE CONSTRUCTED ON PAVEMENT DEPICTED ON THIS SHEET

**Harrison Park 2nd Addition, Phase 3 Street Improvements  
RED OAKS and RED OAKS CIRCLE  
WICHITA, KANSAS**

**SRB** 924 NORTH MAIN WICHITA, KANSAS 67203 www.srb1.com 316-264-8008 FAX 264-4621 E-mail: srb@srb1.com

**SAVOY, RUGGLES & BOHM, P. A.  
ENGINEERING & SURVEYING**

PROJECT NUMBER

DESIGN	DRAWN	UTILITY	REVIEW	DATE	REVISED
CMB	EJG/RA			Aug. 14, 2001	

SRB JOB 1948 SHEET 6 OF 21