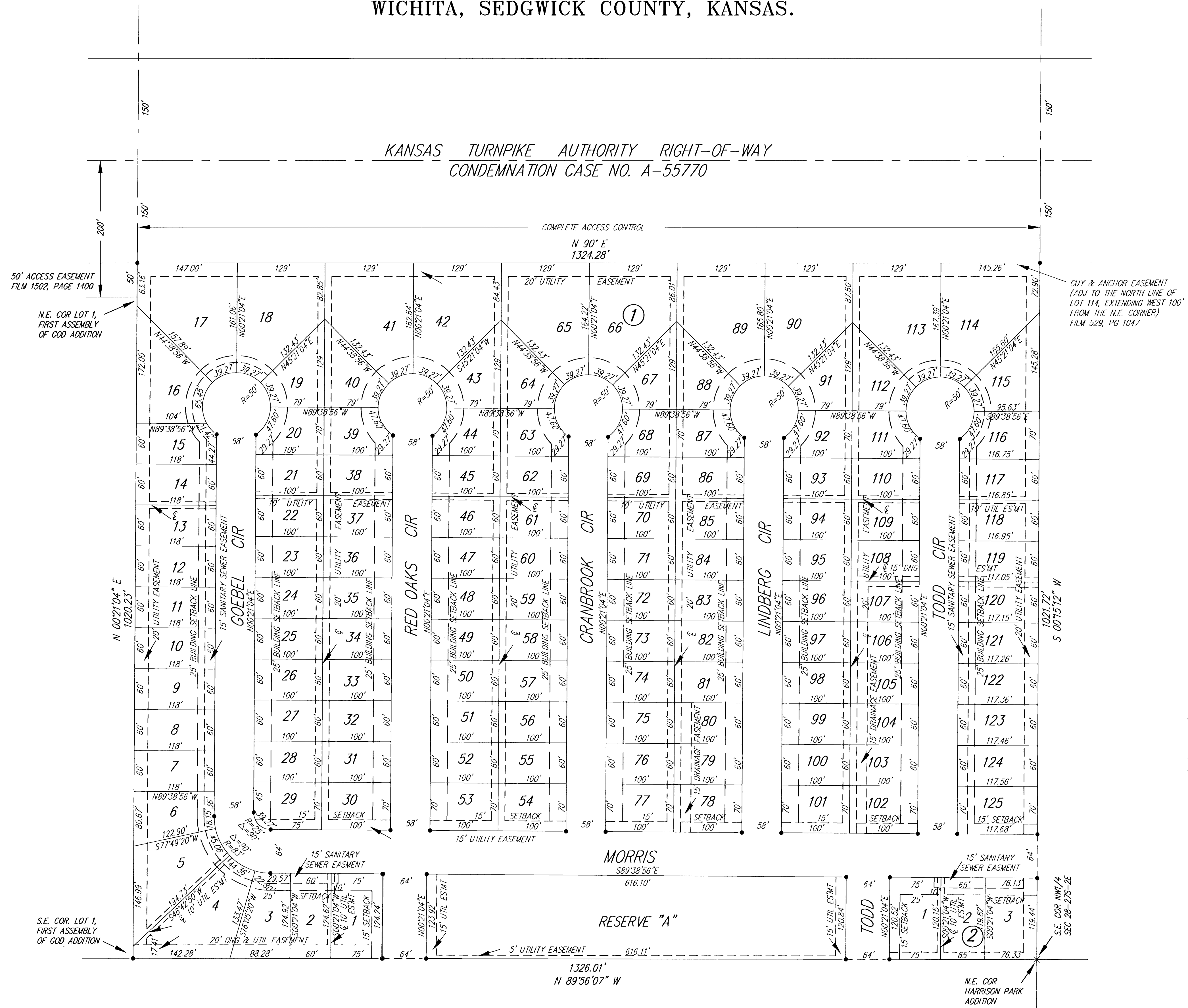


HARRISON PARK 2ND ADDITION

WICHITA, SEDGWICK COUNTY, KANSAS.



SRB

- 1" = 80'
- X = CROSS CUT ON CONC
- = 1/2" REBAR W/SRB CAP

FINAL PLAT				
HARRISON PARK 2ND ADDITION				
WICHITA, KANSAS				
SRB		924 NORTH MAIN WICHITA, KANSAS 67203 www.srb1.com		316-264-8008 FAX 264-4621 E-mail: srb@srb1.com
SAVOY, RUGGLES & BOHM, P. A.				
ENGINEERING & SURVEYING				
PROJECT NUMBER				
DESIGN	DRAWN	UTILITY	REVIEW	DATE
				REVISED