

STORM WATER SEWER PLANS FOR WOODLAND LAKES ESTATES THIRD - ZELTA PHASE

SWS#587

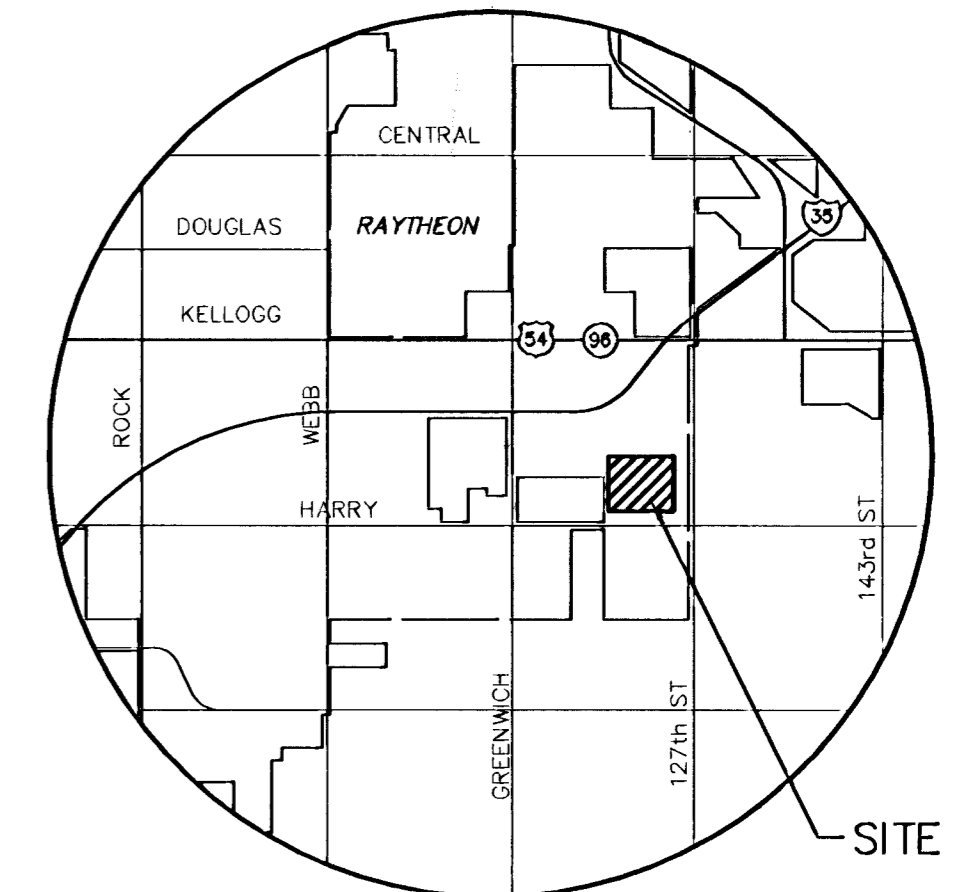
AN ADDITION TO THE CITY OF WICHITA
SEDGWICK COUNTY, KANSAS

PROJECT NO. 468-83593

NEIL D. CABLE, CITY ENGINEER

OCA 751336

WOODLAND LAKES ESTATES



SITE LOCATION

VICINITY MAP

GENERAL NOTES

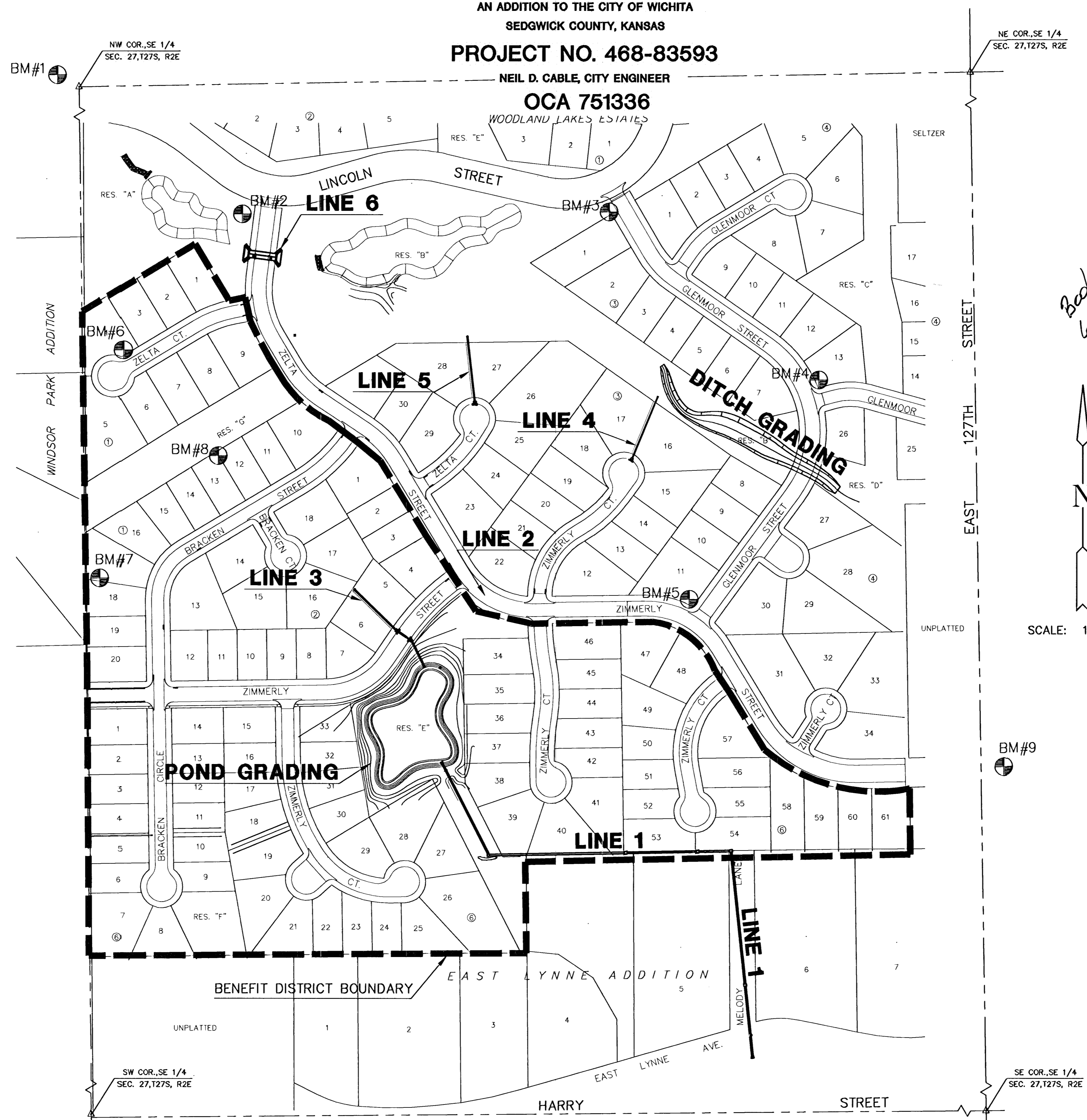
- UNLESS SHOWN OR OTHERWISE STATED ON THESE DRAWINGS, MATERIALS AND CONSTRUCTION SHALL BE IN ACCORDANCE WITH THE CITY OF WICHITA STANDARD SPECIFICATIONS.
- THE TOPS OF INLETS AND MANHOLES AS NOTED ON THE PLANS MAY VARY SO AS TO MEET PROPOSED TOP OF CURB ELEVATIONS OR PAVEMENT ELEVATIONS. THE FIELD ENGINEER SHALL LOCATE INLETS AND MANHOLES WITH REFERENCE TO PROPOSED PAVING PLANS OF THE PERTINENT STREETS.
- ALL CONCRETE SHALL BE STANDARD PAVING MIX UNLESS OTHERWISE NOTED.
- THE CONTRACTOR SHALL BE RESPONSIBLE FOR PRESERVING PROPERTY IRONS. THE CONTRACTOR SHALL BE REQUIRED TO RE-ESTABLISH ANY PROPERTY IRONS WHICH ARE DAMAGED OR DESTROYED BY HIS CONSTRUCTION OPERATIONS. SUCH IRONS SHALL BE RE-ESTABLISHED BY A LICENSED LAND SURVEYOR IN ACCORDANCE WITH STATE LAWS.
- TREES TO BE REMOVED ARE MARKED . ALL TREES WHICH IN THE OPINION OF THE FIELD ENGINEER CAN BE SAVED, SHALL BE SAVED.
- CONTRACTOR SHALL NOTIFY UTILITY COMPANIES OF CONSTRUCTION SCHEDULING.
- EXISTING UTILITIES AND THEIR LOCATIONS, AS SHOWN ON THE PLANS REPRESENT THE BEST INFORMATION OBTAINABLE FOR DESIGN. LOCATION INFORMATION HAS BEEN OBTAINED FROM THE VARIOUS COMPANIES AND IS EITHER FROM COMPANY UTILITY DRAWINGS OR COMPANY PROVIDED FIELD LOCATIONS. THE PLAN LOCATIONS SHOWN ARE NOT GUARANTEED. ADDITIONAL EXISTING UTILITIES MAY ALSO BE ENCOUNTERED.
- CONTRACTOR WILL BE REQUIRED TO PROVIDE A MINIMUM ADVANCE NOTICE OF SEVENTY-TWO (72) HOURS TO UTILITY COMPANIES TO STARTING ANY EXCAVATION AS FOLLOWS:

KANSAS ONE-CALL 800-344-7233
OR 687-2470 (LOCAL WICHITA)

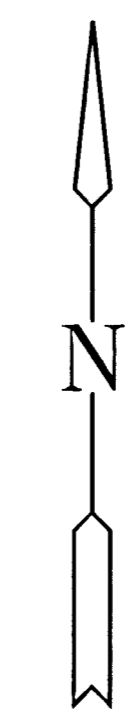
THE CONTRACTOR MUST NOTIFY THE FOLLOWING IN CASE OF EMERGENCY:

COX COMMUNICATIONS (CABLE) 262-0661
WESTAR (ELECTRIC) 261-6512
KANSAS GAS SERVICE (GAS) 832-3101
SBC (TELEPHONE) 800-870-8390
CITY OF WICHITA WATER & SEWER 262-6000
AQUILA (GAS) 946-0096

- RUBBLE FROM THE REMOVAL OF MISCELLANEOUS STRUCTURES AND EXCESS EXCAVATION WHICH IS TO BE WASTED SHALL BE DISPOSED OF ON SITES TO BE PROVIDED BY THE CONTRACTOR. THESE SITES SHALL BE APPROVED BY THE ENGINEER AS TO SUITABILITY, APPEARANCE AND SITE LOCATION. LOCATIONS THAT, IN THE OPINION OF THE ENGINEER, WILL LEAVE AN UNSIGHTLY APPEARANCE WILL NOT BE APPROVED. ALL DISPOSAL SITES MUST BE APPROVED BY THE KANSAS DEPARTMENT OF HEALTH AND ENVIRONMENT. MATERIAL EITHER STOCKPILED OR DISPOSED OF IN A FLOOD PLAIN WOULD REQUIRE A KANSAS STATE BOARD OF AGRICULTURE PERMIT. ANY MATERIAL DUMPED IN WATERS OF THE UNITED STATES OR WETLANDS IS SUBJECT TO U.S. CORPS OF ENGINEERS PERMITTING REGULATIONS. ANY MATERIAL BURIED OR STOCKPILED BEYOND APPROVED CONSTRUCTION LIMITS WOULD REQUIRE ADDITIONAL ARCHAEOLOGICAL INVESTIGATIONS UNLESS BURIED IN A PREVIOUSLY APPROVED BORROW LOCATION.
- CONTRACTOR SHALL RESEED AND MULCH ALL DISTURBED AREAS. COST SHALL BE CONSIDERED SUBSIDIARY TO SITE RESTORATION.



*Booked
6-12-04
MCS
C-260*



SCALE: 1" = 150'

INDEX TO DRAWINGS

| SHEET NO. | DESCRIPTION |
|-----------|-----------------|
| 1 | TITLE SHEET |
| 2-3 | INLET DETAILS |
| 4-5 | MANHOLE DETAILS |
| 6-8 | SWS LINE 1 |
| 9 | SWS LINES 2 & 3 |
| 10 | SWS LINES 4 & 5 |
| 11 | SWS LINE 6 |
| 12-16 | RCB DETAILS |
| 17 | DITCH GRADING |
| 18 | POND GRADING |
| 19 | GRADING DETAILS |
| 20 | EROSION CONTROL |
| 21-24 | BMP DETAILS |
| 25-30 | CROSS SECTIONS |
| 31-32 | FINAL PLAT |

BENCHMARKS

| BM# | ELEVATION | DESCRIPTION |
|-----|-----------|--|
| 1 | 1346.58 | Chiselled square on East end of North headwall of RCB, 31' East and 11' North of the Center of Section 27, Township 27 South, Range 2 East. |
| 2 | 1340.415 | T-post on Southwest corner of Zelta and Lincoln, 5' Southwest of the Northeast corner of Reserve A. |
| 3 | 1338.37 | T-post on Southwest corner of Glenmoor and Lincoln, 5' Southwest of the Northeast corner of Reserve B. |
| 4 | 1329.635 | T-post 5' North of the Southwest corner of Lot 13, Block 4. |
| 5 | 1340.255 | T-post 5' North of the Southeast corner of Lot 11, Block 3. |
| 6 | 1339.135 | T-post 5' West of the "East" corner of Lot 4, Block 2. |
| 7 | 1342.695 | T-post 5' East of the Northwest corner of Lot 18, Block 2. |
| 8 | 1338.12 | T-post 5' Northeast of the Southwest corner of Lot 12, Block 2. |
| 9 | 1329.72 | Railroad spike in West side of 24" tree on Northeast corner of 127th Street East and Zimmerly, 30' East of the centerline of 127th Street East and on the North line of Zimmerly extended. |

AS-BUILT FEBRUARY 2004
H:\QVIL\95058\02172\DWG\SWS\ZELTA\AS-BUILT02172_DT.DWG



**WOODLAND LAKES ESTATES
THIRD ADDITION - ZELTA PHASE**
PROJECT NAME

STORM WATER SEWER PLANS
SHEET TITLE

| | | |
|-----------------------|----------------------|--------------------|
| DFL/BSH DESIGN BY: | KKL/JAS DRAWN BY: | ASH CHECKED BY: |
| JULY 2003 DATE | 02172 JOB NO. | 1 / 32 SHEET/OF |

MKEC
ENGINEERING
CONSULTANTS
411 N. WEBB ROAD
WICHITA, KS. 67206
316-684-9600