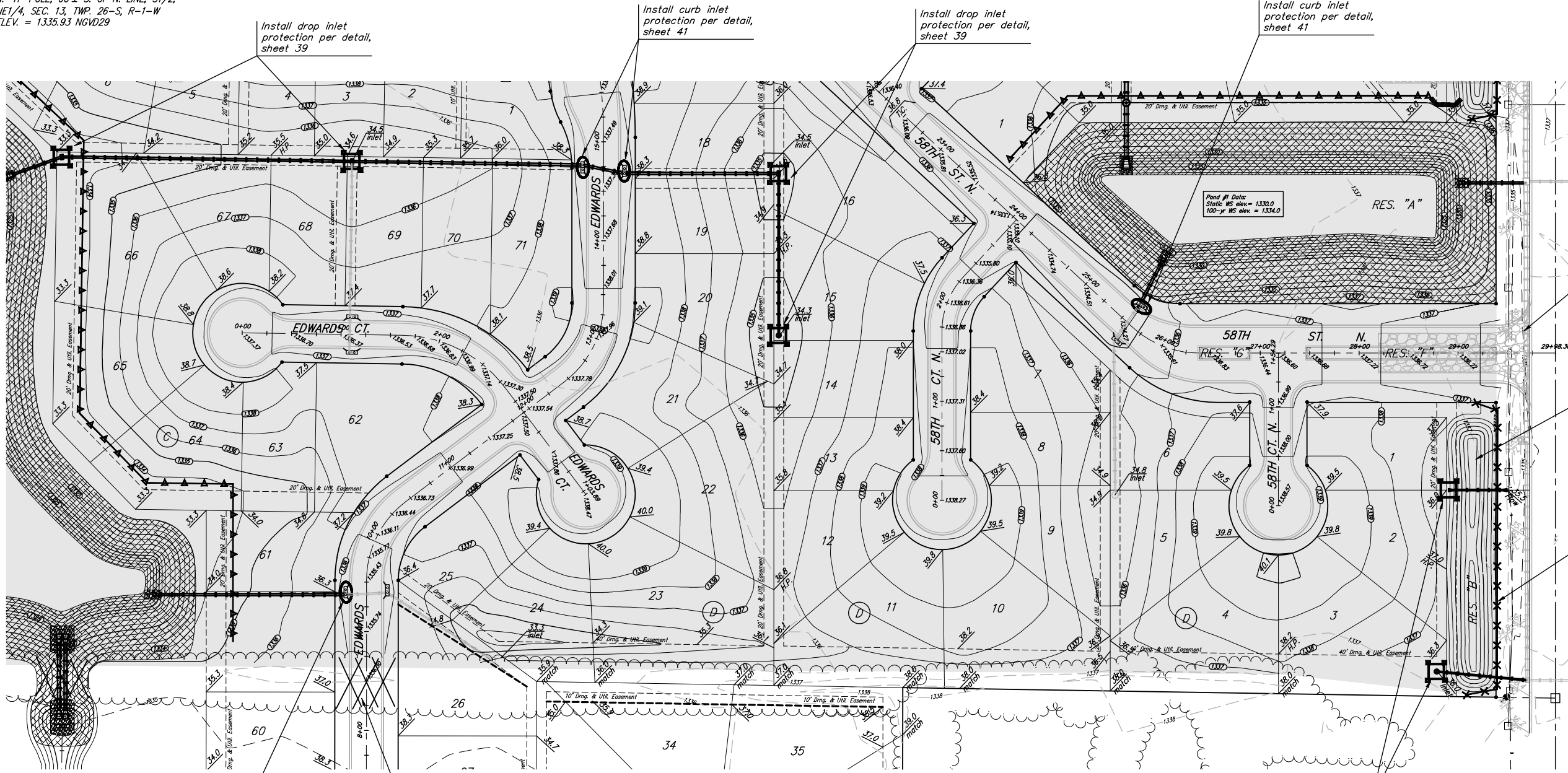


BENCHMARKS:
 BM #1: BENT 60d NAIL IN LIGHT POLE, 55' SSW. OF THE E1/4 COR., SEC. 13, TWP. 26-S, R-1-W. ELEV. = 1336.54 NGVD29
 BM #2: RAILROAD SPIKE IN E. FACE OF N. "H" POLE, 60± S. OF N. LINE, S1/2, NE1/4, SEC. 13, TWP. 26-S, R-1-W. ELEV. = 1335.93 NGVD29
 BM #3: "□" CUT ON TOP OF NE COR. OF WATER VAULT, 437± E. & 54± N. OF S1/4 COR., SEC. 13, TWP. 26-S, R-1-W. ELEV. = 1334.81 NGVD29

Scale: 1" = 60'



Install Const. Entrance Per Detail, Sheet 41

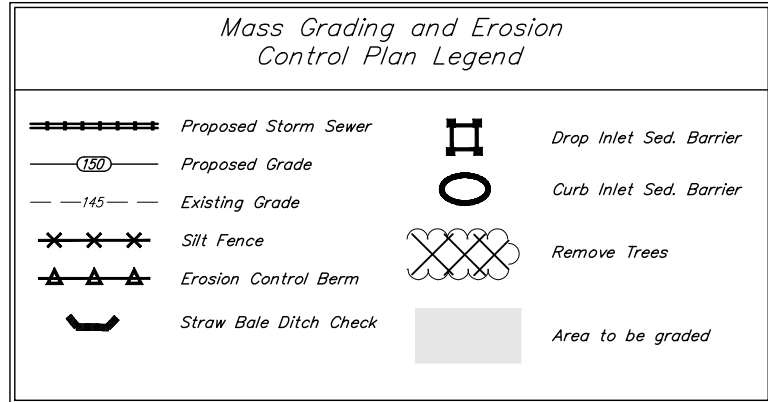
Construct Berms With 4:1 Side Slopes as shown.

Install 336 L.F. Silt Fence along property line per detail, sheet 40

Install curb inlet protection per detail, sheet 41

Remove Trees within Street R/W only as directed by the engineer. Cost shall be included in "Site Clearing & Restoration."

Install drop inlet protection per detail, sheet 39



EROSION CONTROL MEASURE	UNITS	QUANTITY
INSTALL DROP INLET BARRIER	EA.	6
INSTALL CURB INLET BARRIER	EA.	4
INSTALL SILT FENCE	L.F.	336
CONSTRUCTION ENTRANCE	EA.	1

QUANTITIES ARE FOR INFORMATION ONLY!
 CONTRACTOR SHALL VERIFY QUANTITIES PER FINAL BID QUANTITY SHEET.

Baughman NORTHGATE ADDITION
Mass Grading
 Storm Water Drain #308

ENGINEERING | SURVEYING | PLANNING | LANDSCAPE ARCHITECTURE

Baughman Company, P.A. 315 8th St. Wichita, KS 67211 P 316-262-7271 F 316-262-0149

PROJECT NUMBER 468-84254	DESIGN ABG	DRAWN RDM
REVISIONS:	APPROVED ABG	DATE 4-4-07
	SCALE NOTED	SHEET 3 OF 48

Northgate\Mass Grading\MASS_PONDS.dwg