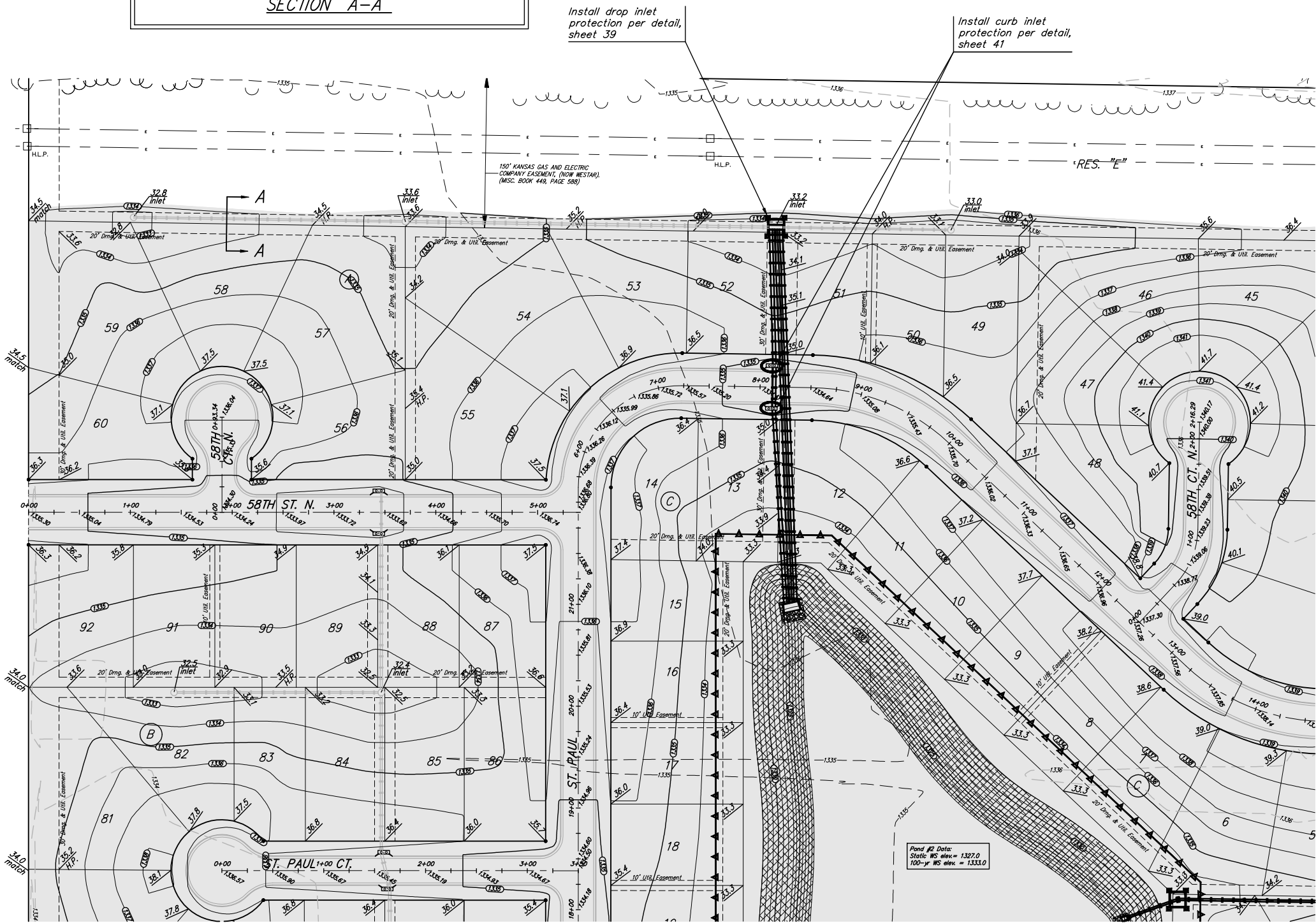
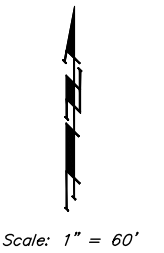
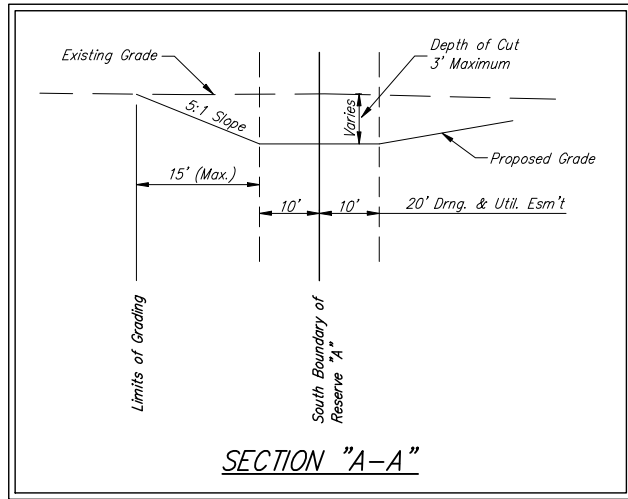


**BENCHMARKS:**  
 BM #1: BENT 60d NAIL IN LIGHT POLE,  
 55' SSW. OF THE E1/4 COR., SEC. 13,  
 TWP. 26-S, R-1-W.  
 ELEV. = 1336.54 NGVD29

BM #2: RAILROAD SPIKE IN E. FACE OF  
 N. 7/4" POLE, 60'± S. OF N. LINE, S1/2,  
 NE1/4, SEC. 13, TWP. 26-S, R-1-W  
 ELEV. = 1335.93 NGVD29

BM #3: "□" CUT ON TOP OF NE COR.  
 OF WATER VAULT, 437'± E. & 54'± N.  
 OF S1/4 COR., SEC. 13, TWP. 26-S,  
 R-1-W.  
 ELEV. = 1334.81 NGVD29



**Mass Grading and Erosion Control Plan Legend**

- Proposed Storm Sewer
- Proposed Grade
- Existing Grade
- Silt Fence
- Erosion Control Berm
- Straw Bale Barrier
- Drop Inlet Sed. Barrier
- Curb Inlet Sed. Barrier
- Remove Trees
- Area to be graded

EROSION CONTROL MEASURE	UNITS	QUANTITY
INSTALL DROP INLET BARRIER	EA.	1
INSTALL CURB INLET BARRIER	EA.	2

QUANTITIES ARE FOR INFORMATION ONLY!  
 CONTRACTOR SHALL VERIFY QUANTITIES PER  
 FINAL BID QUANTITY SHEET.

**Baughman** NORTHGATE ADDITION  
**Mass Grading**  
 Storm Water Drain #308

Baughman Company, P.A. 315 8th St. W. Minn. 55 0711 P 316262771 F 316262019  
 ENGINEERING | SURVEYING | PLANNING | LANDSCAPE ARCHITECTURE

PROJECT NUMBER 468-6424	DESIGN AEG	DRAWN RDM
REVISIONS:	APPROVED AEG	DATE 4-4-07
	SCALE NOTED	
	SHEET	<b>4 OF 48</b>

Northgate\Mass Grading\MASS\_FONDS.dwg