

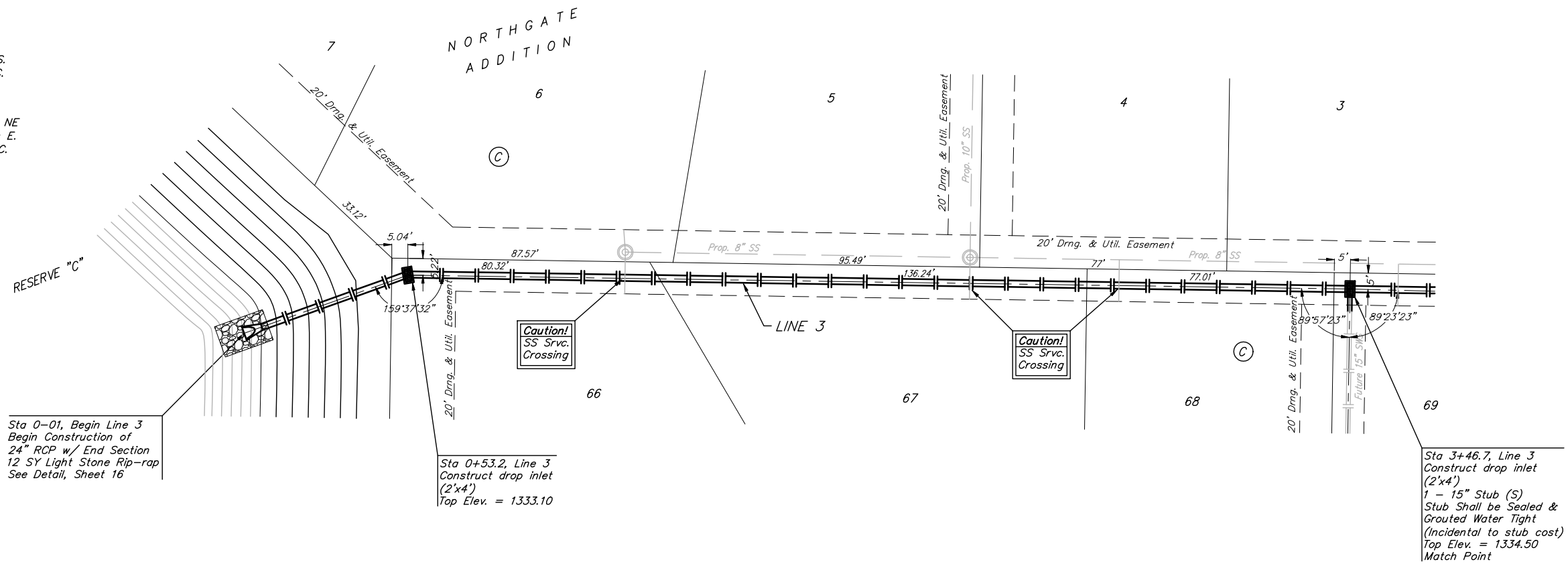
BENCHMARKS:
 BM #1: BENT 60d NAIL IN LIGHT POLE, 55' SSW. OF THE E1/4 COR., SEC. 13, TWP. 26-S, R-1-W. ELEV. = 1336.54 NGVD29

BM #2: RAILROAD SPIKE IN E. FACE OF N. "H" POLE, 60± S. OF N. LINE, S1/2, NE1/4, SEC. 13, TWP. 26-S, R-1-W. ELEV. = 1335.93 NGVD29

BM #3: "□" CUT ON TOP OF NE COR. OF WATER VAULT, 437± E. & 54± N. OF S1/4 COR., SEC. 13, TWP. 26-S, R-1-W. ELEV. = 1334.81 NGVD29



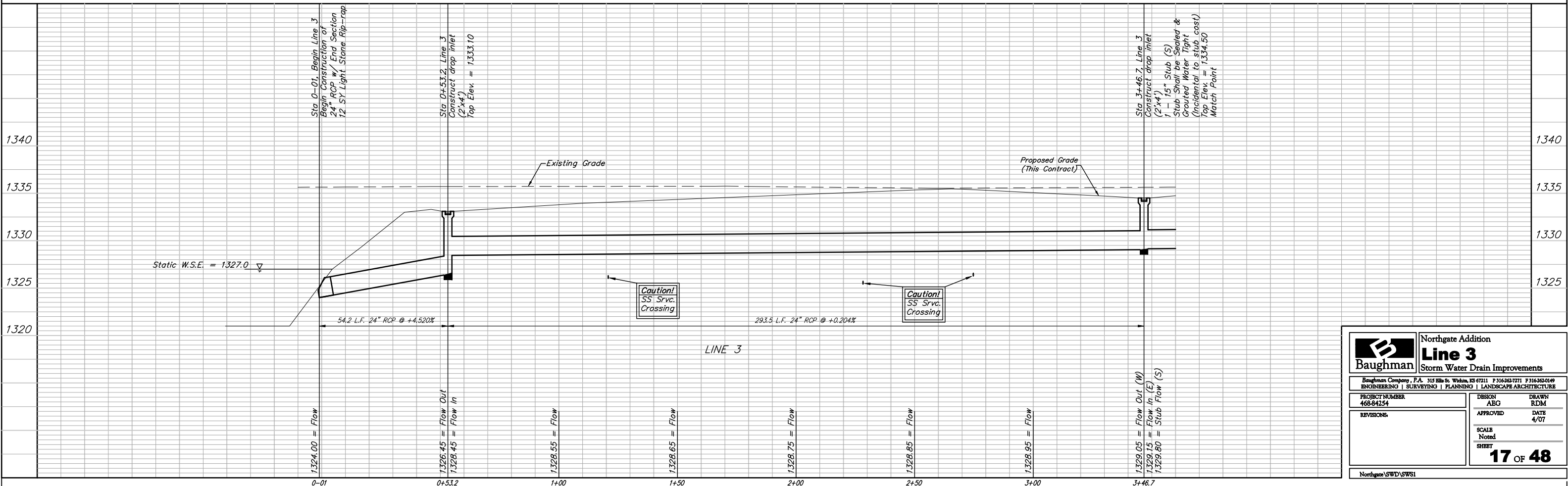
Scale: 1" = 20' Horizontal
 1" = 5' Vertical
 ● = Iron



Sta 0+01, Begin Line 3
 Begin Construction of
 24" RCP w/ End Section
 12 SY Light Stone Rip-rap
 See Detail, Sheet 16

Sta 0+53.2, Line 3
 Construct drop inlet
 (2'x4')
 Top Elev. = 1333.10

Sta 3+46.7, Line 3
 Construct drop inlet
 (2'x4')
 1 - 15" Stub (S)
 Stub Shall be Sealed &
 Grouted Water Tight
 (Incidental to stub cost)
 Top Elev. = 1334.50
 Match Point



		Northgate Addition	
		Line 3	
		Storm Water Drain Improvements	
<small>Baughman Company, P.A. 315 Ellis St. Wilkes, KS 67111 P 316-262-7771 F 316-262-0149 ENGINEERING SURVEYING PLANNING LANDSCAPE ARCHITECTURE</small>			
PROJECT NUMBER 468-84254	DESIGN ABG	DRAWN RDM	DATE 4/07
REVISIONS	APPROVED	SCALE Noted	SHEET
			17 OF 48
<small>Northgate SWD/SWS1</small>			