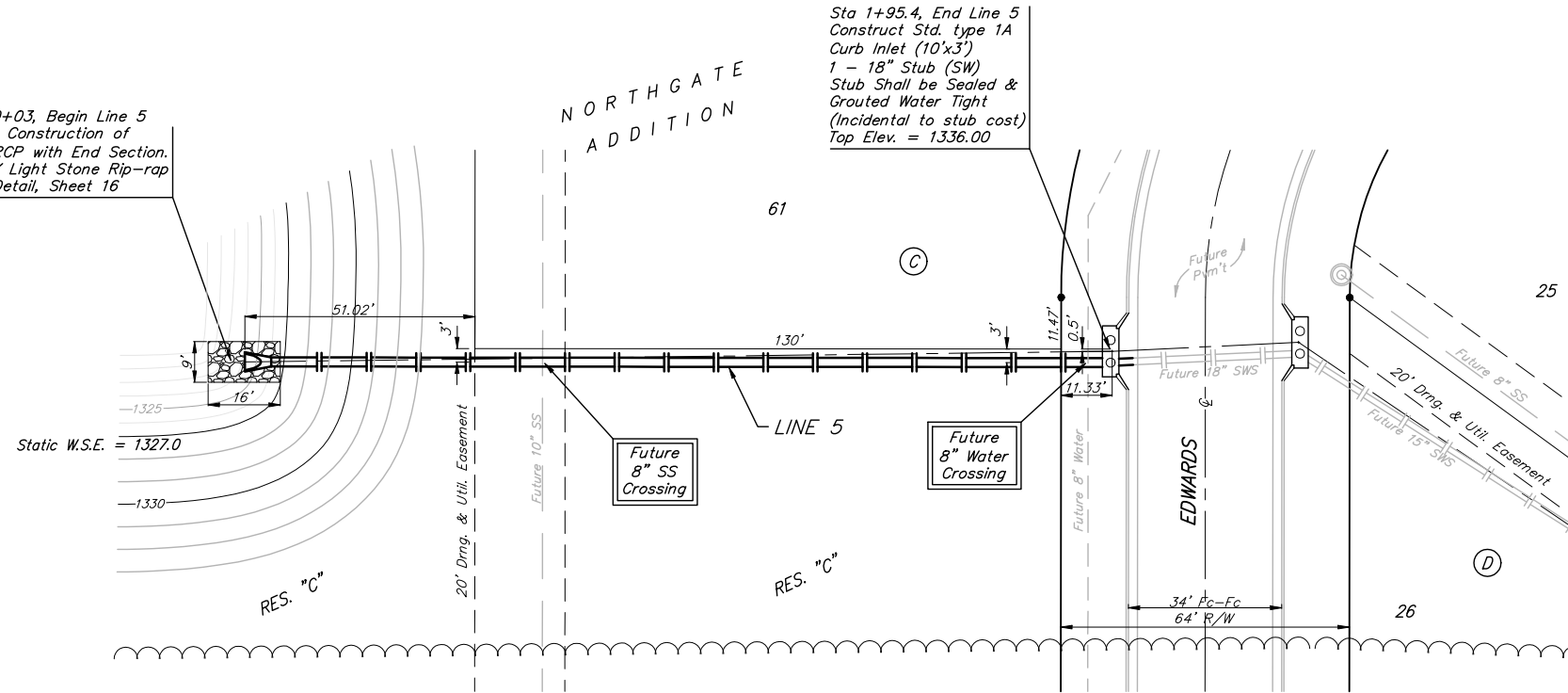


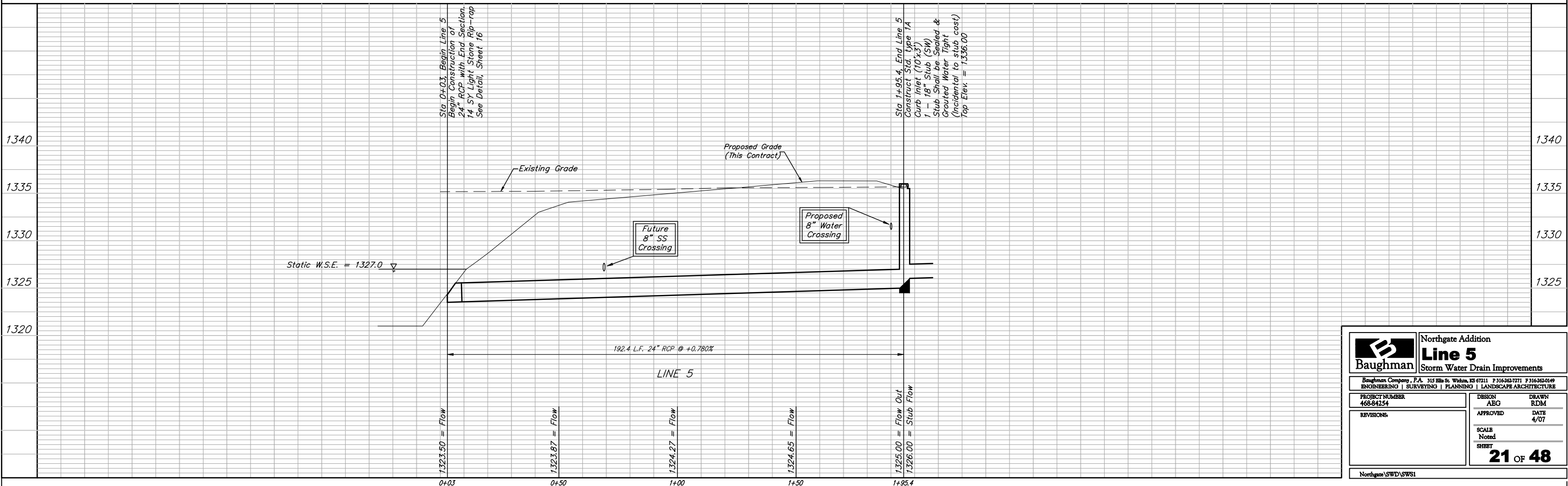
BENCHMARKS:
 BM #1: BENT 60d NAIL IN LIGHT POLE, 55' SSW. OF THE E1/4 COR., SEC. 13, TWP. 26-S, R-1-W. ELEV. = 1336.54 NGVD29
 BM #2: RAILROAD SPIKE IN E. FACE OF N. "H" POLE, 60± S. OF N. LINE, S1/2, NE1/4, SEC. 13, TWP. 26-S, R-1-W. ELEV. = 1335.93 NGVD29
 BM #3: "□" CUT ON TOP OF NE COR. OF WATER VAULT, 437± E. & 54± N. OF S1/4 COR., SEC. 13, TWP. 26-S, R-1-W. ELEV. = 1334.81 NGVD29

Sta 0+03, Begin Line 5
 Begin Construction of 24" RCP with End Section. 14 SY Light Stone Rip-rap See Detail, Sheet 16

Sta 1+95.4, End Line 5
 Construct Std. type 1A Curb Inlet (10'x3')
 1 - 18" Stub (SW)
 Stub Shall be Sealed & Grouted Water Tight (Incidental to stub cost)
 Top Elev. = 1336.00



Scale: 1" = 20' Horizontal
 1" = 5' Vertical
 ● = Iron



		Northgate Addition	
		Line 5	
Storm Water Drain Improvements		ENGINEERING SURVEYING PLANNING LANDSCAPE ARCHITECTURE	
Baughman Company, P.A. 315 Ellis St. Wilkes, KS 67111 P 316-262-7771 F 316-262-0149 468-84254		DESIGN AEG	DRAWN RDM
PROJECT NUMBER 468-84254	APPROVED DATE 4/07	SCALE Noted	SHEET 21 OF 48
Northgate SWD/SWS1			