

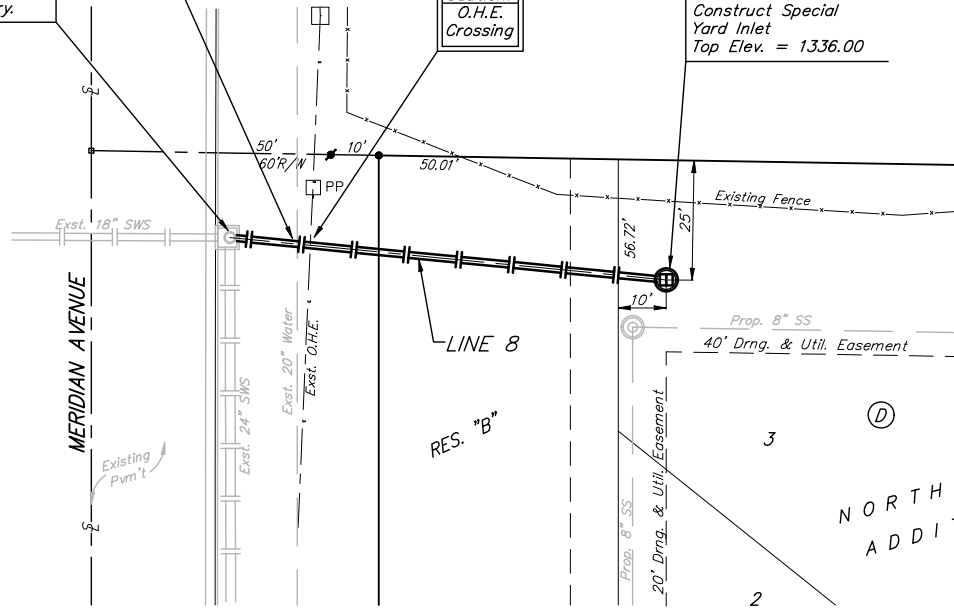
**BENCHMARKS:**  
 BM #1: BENT 60d NAIL IN LIGHT POLE, 55' SSW. OF THE E1/4 COR., SEC. 13, TWP. 26-S, R-1-W. ELEV. = 1336.54 NGVD29  
 BM #2: RAILROAD SPIKE IN E. FACE OF N. "H" POLE, 60± S. OF N. LINE, S1/2, NE1/4, SEC. 13, TWP. 26-S, R-1-W. ELEV. = 1335.93 NGVD29  
 BM #3: "□" CUT ON TOP OF NE COR. OF WATER VAULT, 437± E. & 54± N. OF S1/4 COR., SEC. 13, TWP. 26-S, R-1-W. ELEV. = 1334.81 NGVD29

Sta 0+00, Begin Line 8  
 Core into existing Junction Box, reshape invert as necessary.

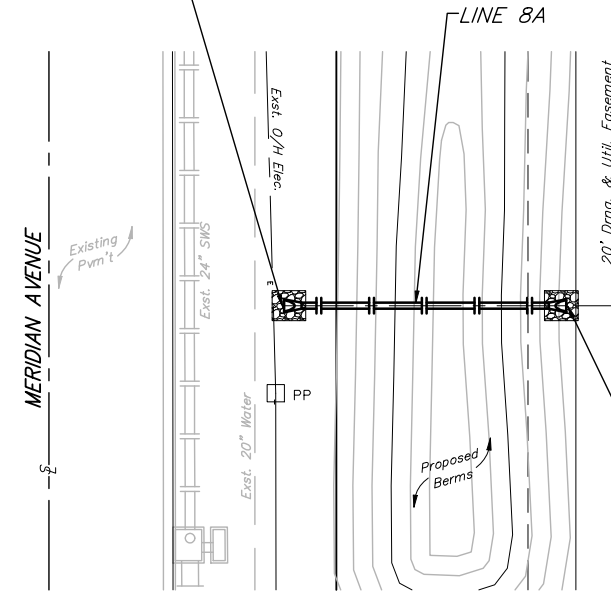
Caution!  
 20" Wtr. Crossing

Caution!  
 O.H.E. Crossing

Sta 0+91.5, End Line 8  
 Construct Special Yard Inlet  
 Top Elev. = 1336.00



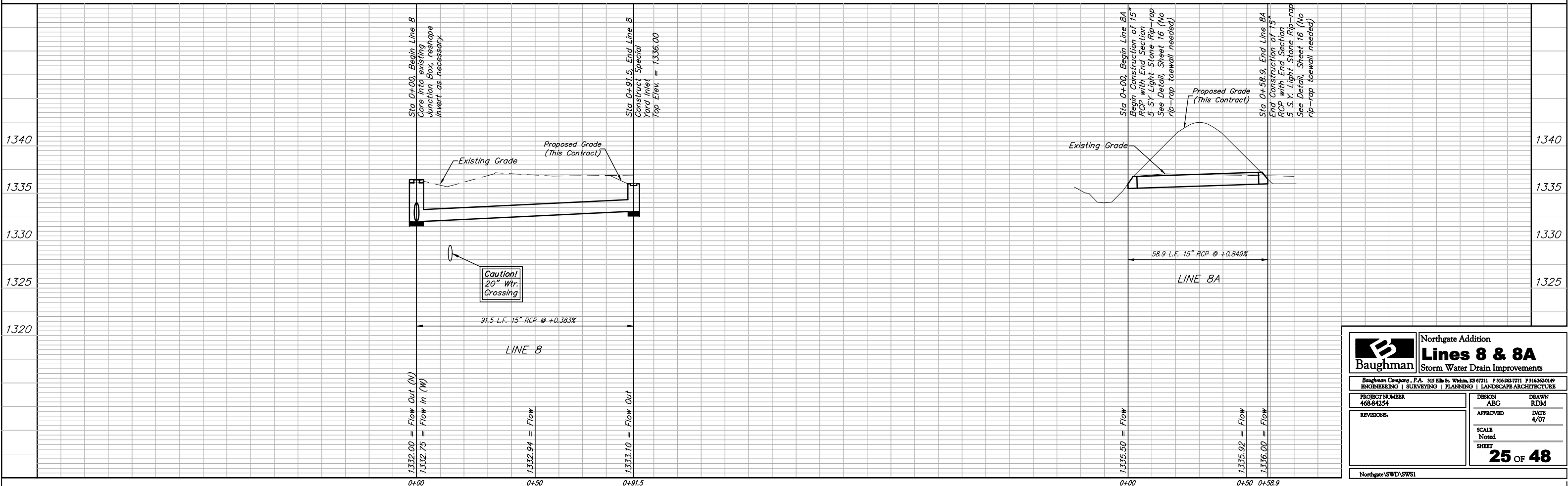
Sta 0+00, Begin Line 8A  
 Begin Construction of 15" RCP with End Section 5 SY Light Stone Rip-rap See Detail, Sheet 16 (No rip-rap toewall needed)



NORTHGATE ADDITION  
 2

Scale: 1" = 20' Horizontal  
 1" = 5' Vertical  
 ● = Iron

Sta 0+58.9, End Line 8A  
 End Construction of 15" RCP with End Section 5 S.Y. Light Stone Rip-rap See Detail, Sheet 16 (No rip-rap toewall needed)



		Northgate Addition	
		<b>Lines 8 &amp; 8A</b>	
		Storm Water Drain Improvements	
<small>Baughman Company, P.A. 315 Ellis St. Wichita, KS 67211 P 316-262-7771 F 316-262-0149        ENGINEERING   SURVEYING   PLANNING   LANDSCAPE ARCHITECTURE</small>			
PROJECT NUMBER 468-84254	DESIGN ABG	DRAWN RDM	
REVISIONS	APPROVED	DATE 4/07	
	SCALE Noted	SHEET	
			<b>25 OF 48</b>
Northgate SWD\SW51			