

**BENCHMARKS:**  
 BM #1: BENT 60d NAIL IN LIGHT POLE, 55' SSW. OF THE E1/4 COR., SEC. 13, TWP. 26-S, R-1-W.  
 ELEV. = 1336.54 NGVD29

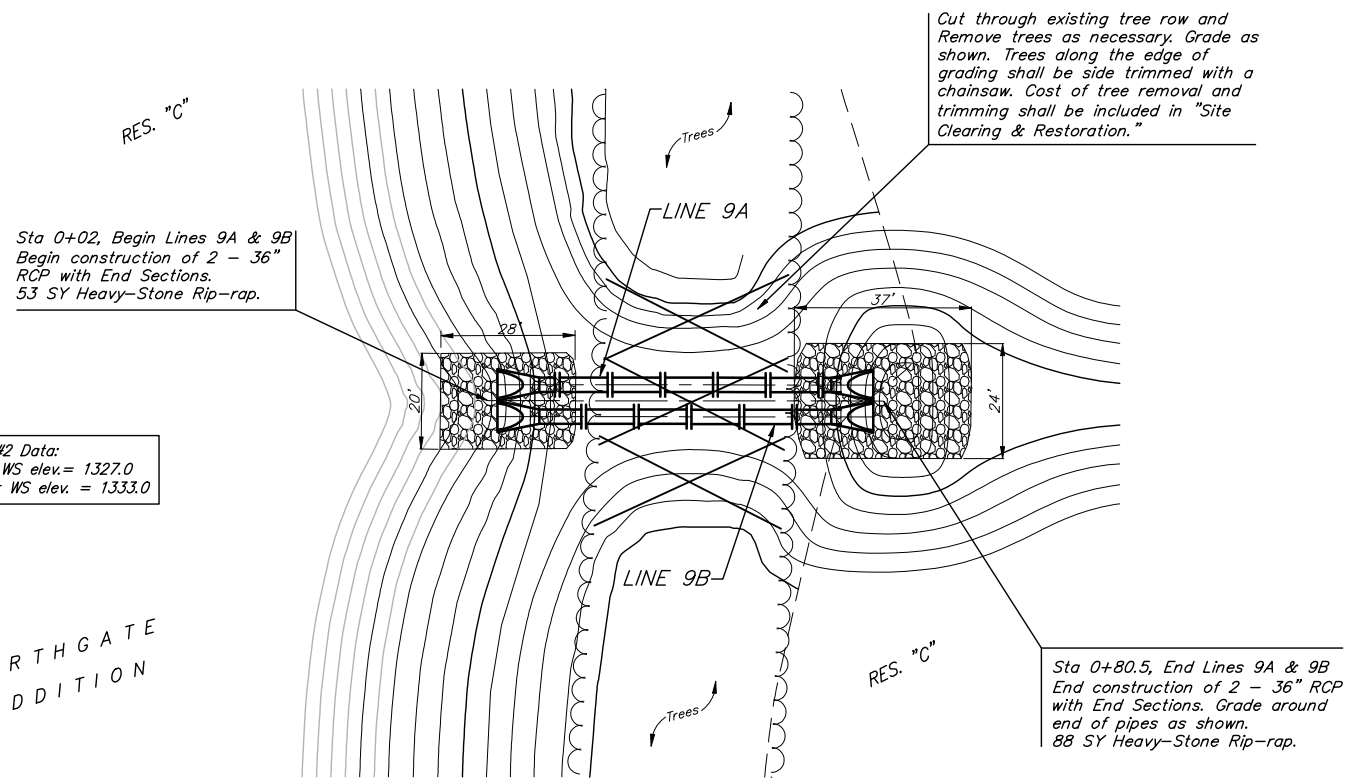
BM #2: RAILROAD SPIKE IN E. FACE OF N. "H" POLE, 60± S. OF N. LINE, S1/2, NE1/4, SEC. 13, TWP. 26-S, R-1-W.  
 ELEV. = 1335.93 NGVD29

BM #3: "□" CUT ON TOP OF NE COR. OF WATER VAULT, 437± E. & 54± N. OF S1/4 COR., SEC. 13, TWP. 26-S, R-1-W.  
 ELEV. = 1334.81 NGVD29

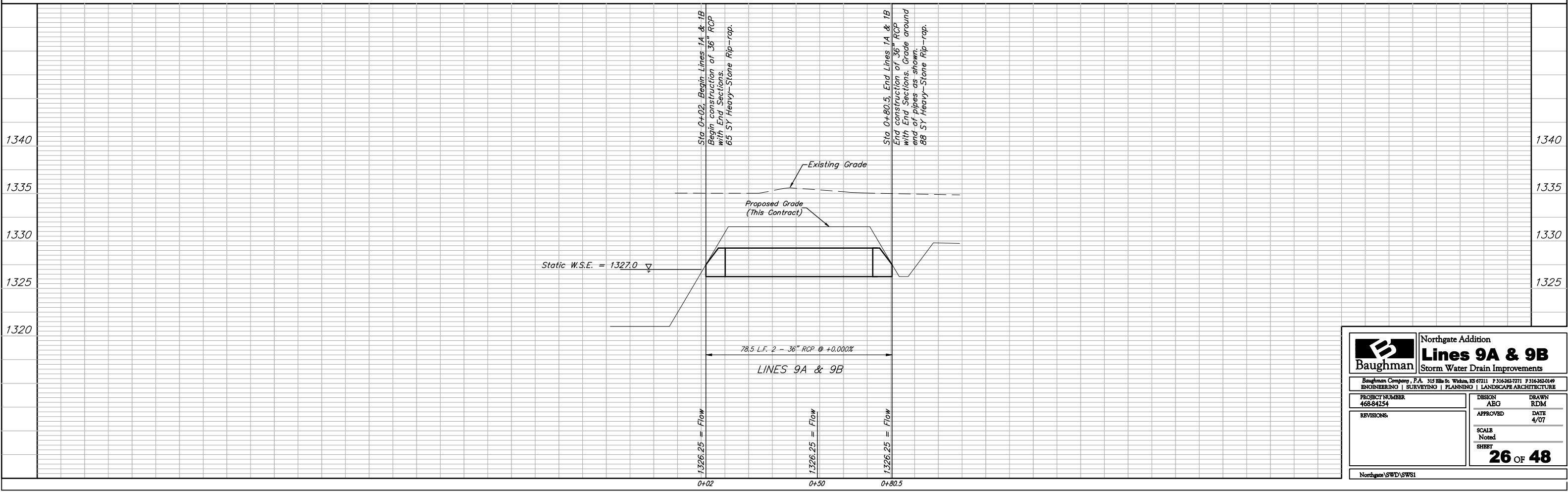
Pond #2 Data:  
 Static WS elev. = 1327.0  
 100-yr WS elev. = 1333.0

NORTHGATE  
 ADDITION

Scale: 1" = 20' Horizontal  
 1" = 5' Vertical  
 ● = Iron



See Section "A-A" and Section "B-B", Sheet 9 for Grading in this area and installation of Rip-rap.



<b>Baughman</b>		Northgate Addition <b>Lines 9A &amp; 9B</b> Storm Water Drain Improvements	
Baughman Company, P.A. 315 Ellis St. Wilkes, KS 67111 P 316-262-7771 F 316-262-0149 ENGINEERING   SURVEYING   PLANNING   LANDSCAPE ARCHITECTURE			
PROJECT NUMBER 468-84254	DESIGN ABG	DRAWN RDM	
REVISIONS	APPROVED	DATE 4/07	
	SCALE Noted	SHEET <b>26 OF 48</b>	
Northgate SWD\SWI			