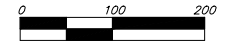
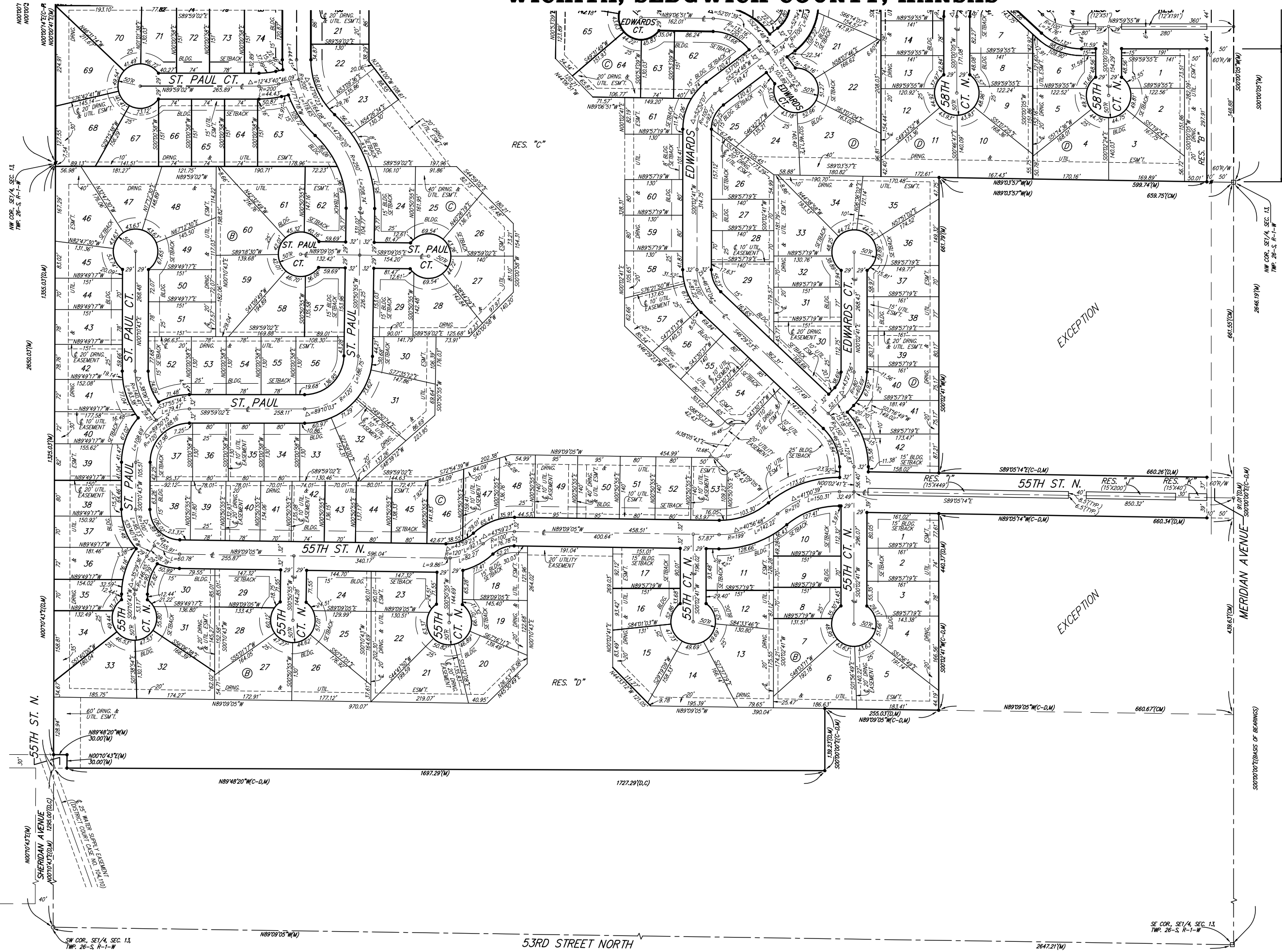


NORTHGATE ADDITION WICHITA, SEDGWICK COUNTY, KANSAS



- = #4 REBAR W/ "BAUGHMAN" SET (SET)
- = #4 REBAR W/ "BAUGHMAN" CAP (FOUND)
- = 1/2" IRON (FOUND)
- = CALCULATED
- = #5 REBAR (FOUND)
- △ = 1" SQUARE IRON BAR (FOUND)
- = #5 REBAR W/ ILLEGIBLE CAP (FOUND)

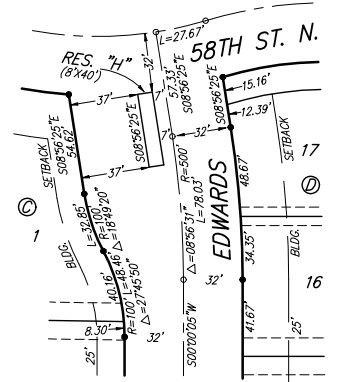
- (M) = MEASURED
- (D) = DESCRIBED
- (C) = CALCULATED
- (PF) = PLATTED INFO. PER FOX MEADOW ADD.
- (C-PF) = CALCULATED INFO. PER FOX MEADOW ADD.
- (CM) = CALCULATED INFO. MEASURED INFO.
- (C-D) = CALCULATED PER DESCRIBED INFO.

LOT	BLOCK	ELEVATION	
		NGVD29	
1-5	A	1,337.0	
6, 7, 13-22	B	1,335.0	
26, 27, 32, 33	B	1,335.0	
6-13, 15-28	C	1,335.0	
30-33, 43-52	C	1,335.0	
55-61, 64-66	C	1,335.0	
53, 54	C	1,336.0	

BENCHMARK:
BENT 600 NAIL IN LIGHT POLE,
55' SSW. OF THE E/4 COR.,
SEC. 13, TWP. 26-S, R-1-W.
ELEV. = 1,336.54 NGVD29

RAILROAD SPIKE IN E. FACE OF N. "H" POLE,
60'± S. OF N. LINE, S1/2, NE1/4, SEC. 13,
TWP. 26-S, R-1-W.
ELEV. = 1,335.93 NGVD29

"I" CUT ON TOP OF NE COR. OF
WATER VAULT, 437'± E. & 54'± N. OF
S1/4 COR., SEC. 13, TWP. 26-S, R-1-W.
ELEV. = 1,334.81 NGVD29



NOTE:
A master grading plan for drainage has been developed for this subdivision and is on file with the City of Wichita, Kansas. All drainage easements, right-of-ways, or reserves shall remain at established grades or as modified with the approval of the City Engineer of the City of Wichita, Kansas. No obstructions which impede the flow of this drainage system be allowed.