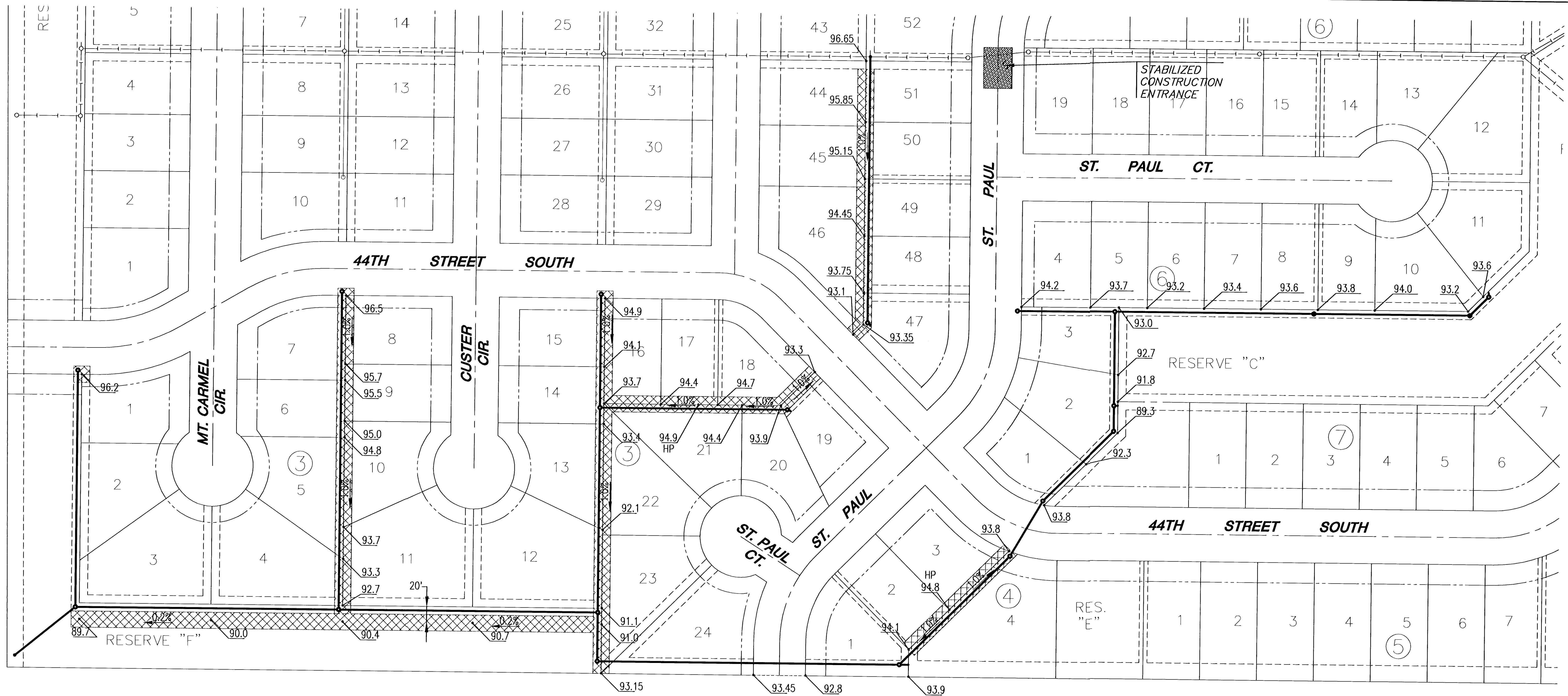
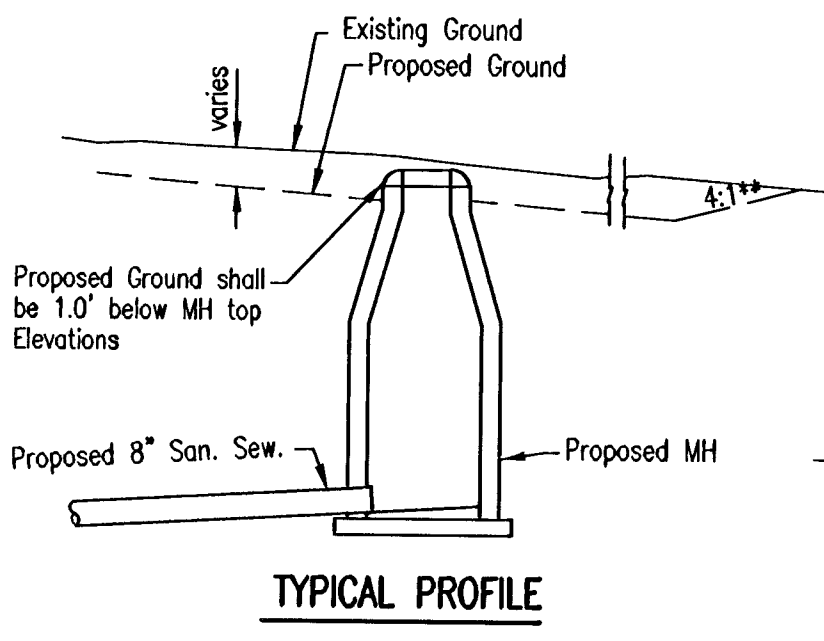


PLAN	CHECKED	CHECKED
BY		
DATE		

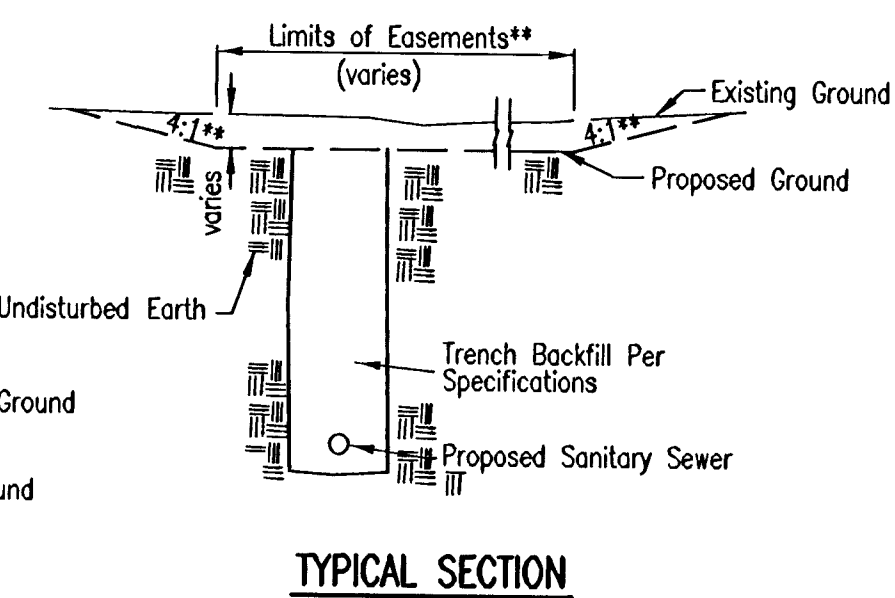


**EASEMENT GRADING DETAILS**

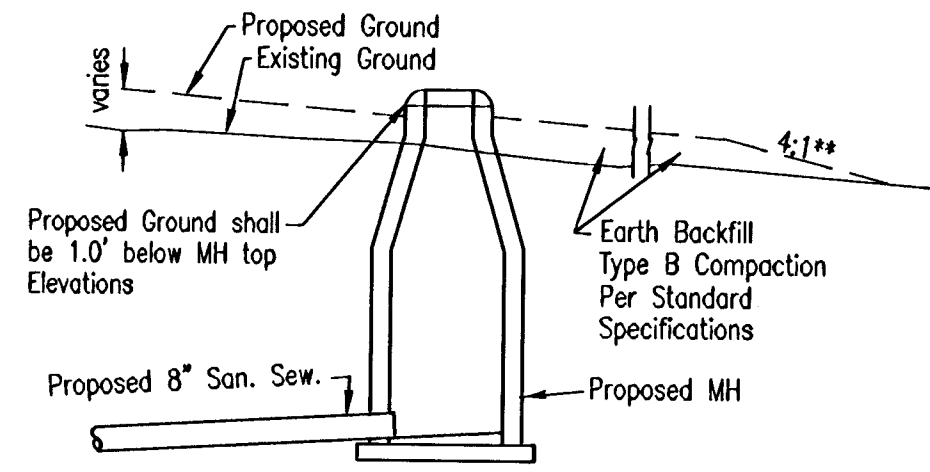


LINE 1, MH 1-1 THRU 1-3  
SPECIAL CUT SECTION

"CUT" SITUATIONS

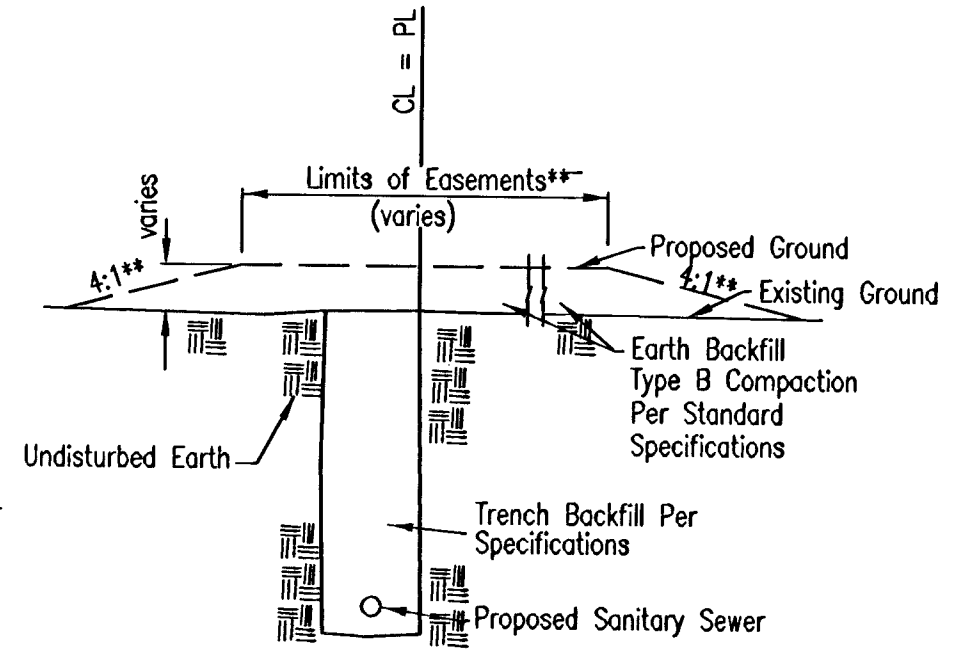


TYPICAL SECTION



TYPICAL PROFILE

"FILL" SITUATIONS



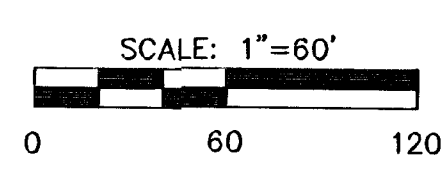
TYPICAL SECTION

- = AREAS TO BE GRADED
- H.P. = HIGH POINT
- M.E. = MATCH EXISTING

\*\*Graded widths and slopes may vary as approved by the Engineer to minimize conflict with existing trees.

Easement Grading will be bid on a lump sum basis for grading the easements to the profile and elevations shown on the Easement Grading Plan (this sheet). Approximate quantities of earthwork for easement grading are shown below. These approximate quantities are given for information only. The Contractor should verify the quantities when preparing the proposal.

Cut 2060 C.Y. (Approximate)  
Fill 1900 C.Y. (Approximate)



DSNR: MDK OPER: TRE SCALE: 1=1.00  
 H: \CIVIL\00062.DWG\SAN\00062RD3.DWG 07/25/00 06:37:59 AM CDT  
 G:\CIVIL\95138\San\Phase3\seasgrd.dwg

G:\CIVIL\95138\SAN\PHASE3\EASEGRD.DWG

**MKEC**  
ENGINEERING CONSULTANTS  
411 N. WEBB ROAD  
WICHITA, KS. 67206  
316-684-9600

<b>THE LEGACY</b> PROJECT NAME		
<b>EASEMENT GRADING DETAILS</b> SHEET TITLE		
MKEC DESIGN BY:	DAC DRAWN BY:	JTC CHECKED BY:
DECEMBER 2003 DATE	13264 JOB NO.	9 / 12 SHEET/OF