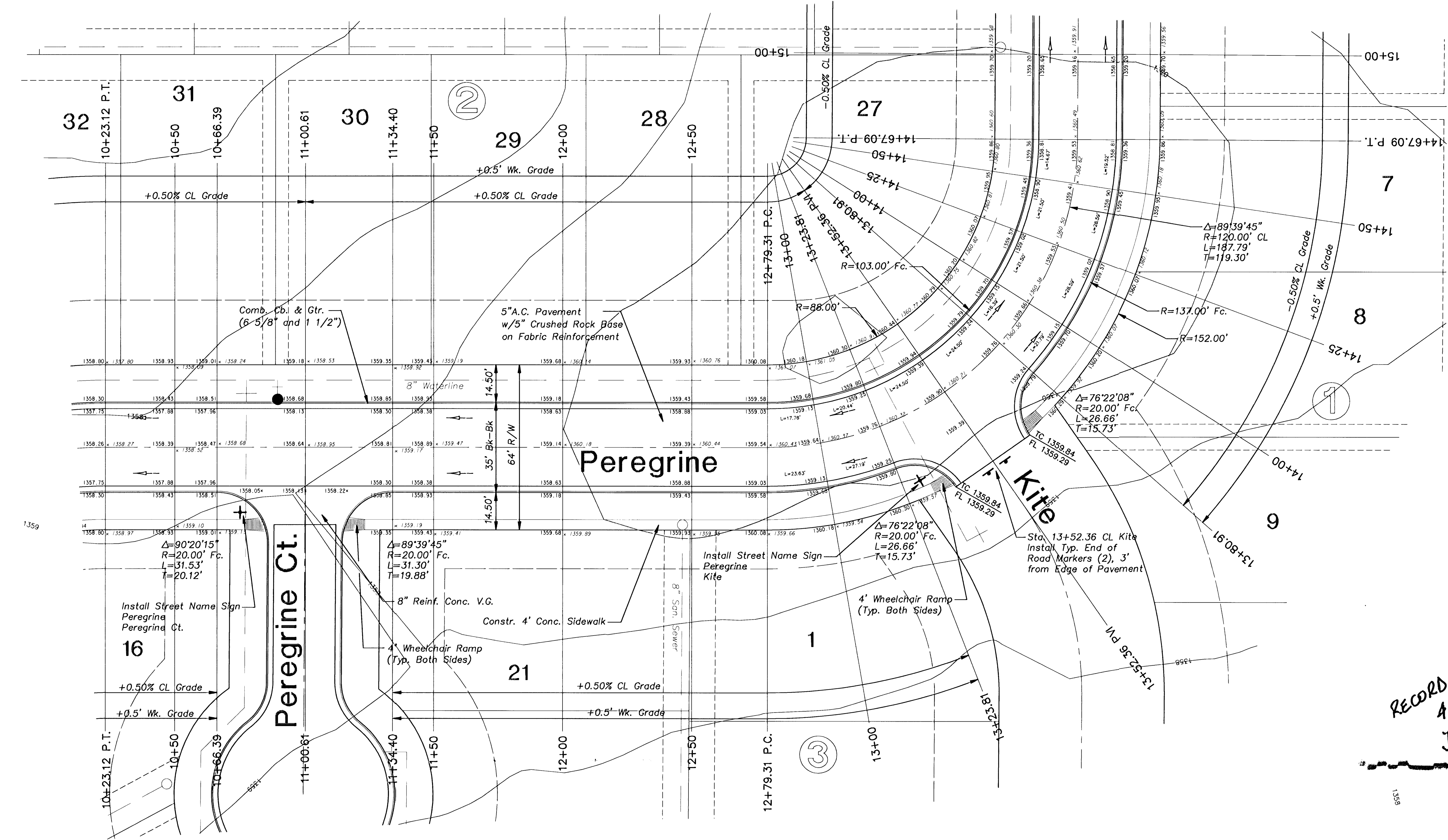
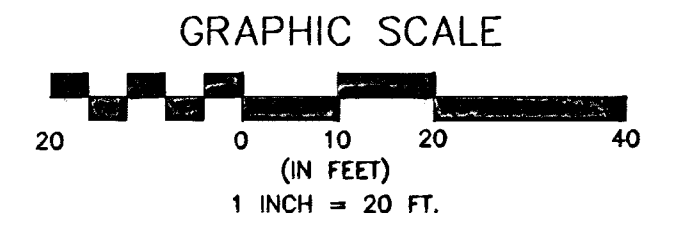


$\Delta = 89'39'45''$ $L = 187.79'$ $R = 120.00'$ $T = 119.30'$

STATION	CL ARC	CHORD LENGTH		DEFLECTION	TOTAL DEFLECTION
		8' LT.	8' RT.		
12+79.31 P.C.					
13+00.00	20.69'	16.27'	20.66'	25.06'	4°56'22"
13+23.81	23.81'	18.72'	23.77'	28.82'	5°41'3"
13+25.00	1.19'	0.94'	1.19'	1.44'	0°17'3"
13+50.00	25.00'	19.65'	24.95'	30.26'	5°58'6"
13+52.36	2.36'	1.86'	2.36'	2.86'	0°33'48"
13+75.00	22.64'	17.80'	22.61'	27.41'	5°24'18"
13+80.91	5.91'	4.65'	5.91'	7.17'	1°24'39"
14+00.00	19.09'	15.02'	19.07'	23.12'	4°33'27"
14+25.00	25.00'	19.65'	24.95'	30.26'	5°58'6"
14+50.00	25.00'	19.65'	24.95'	30.26'	5°58'6"
14+67.10 P.T.	17.10'	13.45'	17.08'	20.71'	4°4'55"
DEFLECTION/FOOT = 0.238732415 DEGREES				14.323944878 MINUTES	



RECORD DRAWINGS
4/4/04
J.V. / B.K.

No.	Street and Station	From CL	Description	Elevation
2	Peregrine, 10+89.77	17.50' W.	Top of Curb (W), in front of Fire Hydrant, at Southeast corner of Lot 30, Block 2	1358.69

POE & ASSOCIATES OF KANSAS, INC.
 CONSULTING ENGINEERS
 6840 E. Central, Suite 200 • Wichita, KS 67220-4242
 Phone: 316-685-4114 • FAX: 316-685-4444

CITY OF WICHITA, KANSAS
 NEIL D. CABLE, P.E. - CITY ENGINEER
 C.O.W. Project # 472-83687 O.C.A. # 765782

FINAL
 Designed By: J. Ubert / B. Kulla
 Drawn By: B. Kulla
 P.O. Job No.: 1748A
 Date: May 2003

G:\APPS\DC\A\1748\base.dwg Mon Apr 05 11:55:06 2004 Bernard Kulla, Poe & Associates Inc.